

**Integrating the Healthcare Enterprise**



5

**IHE Radiation Oncology (RO)  
Technical Framework**

10

**Volume 1  
IHE RO TF-1  
Profiles**

15

20

**Revision 4.0 - Final Text  
May 13, 2026**

25

**Please verify you have the most recent version of this document, which is published [here](#).**

## CONTENTS

1	Introduction.....	4
	1.1 Introduction to IHE.....	4
30	1.2 Introduction to IHE Radiation Oncology Domain (RO) .....	4
	1.3 Intended Audience .....	4
	1.4 Prerequisites and Reference Material .....	4
	1.4.1 Actors.....	5
	1.4.2 Transactions.....	8
35	1.4.3 IHE Integration Statements.....	14
	1.5 Overview of Technical Framework Volume 1 .....	14
	1.6 Comment Process.....	14
	1.7 Copyright Licenses .....	15
	1.8 Trademark.....	15
40	1.9 Disclaimer Regarding Patent Rights.....	15
	1.10 History of Document Changes.....	15
	2 Radiation Oncology Integration Profiles .....	17
	2.1 Dependencies among Integration Profiles .....	18
	2.2 Security Implications .....	18
45	2.3 Profiles Overview .....	19
	2.4 Product Implementations .....	19
	3 Basic Radiation Therapy Objects Integration Profile II (BRTO-II) .....	20
	3.1 Actors / Transactions .....	20
	3.1.1 Actor Descriptions and Actor Profile Requirements.....	22
50	3.2 Basic RT Objects Integration Profile Options .....	23
	3.3 BRTO II Required Actor Groupings.....	23
	3.4 BRTO II Overview .....	23
	3.4.1 Concepts .....	23
	3.4.2 Use Cases.....	24
55	3.5 BRTO II Security Considerations.....	27
	3.6 BRTO II Cross Profile Considerations .....	27
	4 Multimodality Image Registration for Radiation Oncology (MMRO-III) Profile .....	28
	4.1 Actors / Transactions .....	28
	4.1.1 Actor Descriptions and Actor Profile Requirements.....	30
60	4.2 MMRO-III Actor Options.....	31
	4.3 MMRO-III Actor Required Groupings.....	32
	4.4 MMRO-III Overview.....	32
	4.4.1 Concepts .....	32
	4.4.2 Use Cases.....	36
65	4.5 MMRO-III Security Considerations .....	40
	4.6 MMRO-III Cross Profile Considerations.....	40
	5 Treatment Planning – Plan Content Integration (TPPC) Profile.....	41
	5.1 Actors / Transactions .....	41
	5.1.1 Actor Descriptions and Actor Profile Requirements.....	45
70	5.2 TPPC Transaction Options.....	45

	5.2.1 Producer / Consumer Transaction Groupings.....	48
	5.3 TPPC Actor Required Groupings.....	48
	5.4 TPPC Overview .....	48
	5.4.1 Concepts.....	49
75	5.4.2 Use Cases .....	51
	5.5 TPPC Security Considerations.....	52
	5.6 TPPC Cross Profile Considerations.....	53
6	Reserved.....	54
7	Reserved.....	54
80	8 Reserved.....	54
9	Treatment Delivery Workflow - II (TDW - II) Profile .....	55
	9.1 TDW-II Actors, Transactions, and Content Modules .....	55
	9.1.1 Actor Descriptions and Actor Profile Requirements.....	57
	9.2 TDW-II Actor Options.....	58
85	9.2.1 Retain Original Treatment Records Option .....	58
	9.2.2 Time Zone Support Option .....	58
	9.3 TDW-II Required Actor Groupings.....	59
	9.4 TDW-II Overview .....	59
	9.4.1 Concepts.....	59
90	9.4.2 Use Cases .....	59
	9.5 TDW-II Security Considerations .....	63
	9.6 TDW-II Cross Profile Considerations.....	65
	Appendices to Volume 1.....	66
	Glossary .....	67
95	Radiation Oncology Glossary Terms.....	67

## 1 Introduction

100 This document, Volume 1 of the IHE Radiation Oncology (RO) Technical Framework, describes the clinical use cases, actors, content modules, and transaction requirements for the Radiation Oncology profiles.

### 1.1 Introduction to IHE

105 Integrating the Healthcare Enterprise (IHE) is an international initiative to promote the use of standards to achieve interoperability among health information technology (HIT) systems and effective use of electronic health records (EHRs). IHE provides a forum for care providers, HIT experts and other stakeholders in several clinical and operational domains to reach consensus on standards-based solutions to critical interoperability issues.

110 The primary output of IHE is system implementation guides, called IHE profiles. IHE publishes each profile through a well-defined process of public review and Trial Implementation and gathers profiles that have reached Final Text status into an IHE Technical Framework, of which this volume is a part.

For general information regarding IHE, refer to [www.ihe.net](http://www.ihe.net).

### 1.2 Introduction to IHE Radiation Oncology Domain (RO)

115 In support of IHE aims, The American Association of Physicists in Medicine (AAPM) and the American Society for Radiology Oncology (ASTRO) supports a multi-society Task Force and the IHE Radiation Oncology Planning and Technical Committees to undertake an initiative to promote seamless connectivity and integration of radiotherapy equipment and the patient health information systems.

120 The Task Force will include members from ASTRO, RSNA, AAPM, the American College of Radiology (ACR) and the Medical Imaging and Technology Alliance (MITA). In addition, members of the international community have also been invited to participate in IHE-RO Planning and Technical Committees. The IHE-RO Task Force, in close collaboration with radiotherapy product manufacturers, will oversee development of appropriate integration profiles for radiation therapy and set up a demonstration of seamless communication among the full array  
125 of radiotherapy products.

### 1.3 Intended Audience

The intended audience of IHE Technical Frameworks Volume 1 (Profiles) is:

- Those interested in integrating healthcare information systems and workflows
- IT departments of healthcare institutions
- 130 • Technical staff of vendors participating in the IHE initiative

### 1.4 Prerequisites and Reference Material

It is strongly recommended that, prior to reading this volume, readers familiarize themselves with the concepts defined in the [IHE Technical Frameworks General Introduction](#).

Additional reference material available includes:

135 **1.4.1 Actors**

Actors are information systems or components of information systems that produce, manage, or act on information associated with operational activities in the enterprise.

For information on actors for all domains and their brief descriptions, see IHE Technical Frameworks General Introduction, [Appendix A - Actors](#).

140 For ease of use, a list of Radiation Oncology actors for the profiles in this Volume 1, is provided below.

145 **Acquisition Modality** – A system that acquires and creates medical images while a patient is present, e.g., a Computed Tomography scanner or Nuclear Medicine camera. A modality may also create other evidence objects such as Grayscale Softcopy Presentation States for the consistent viewing of images or Evidence Documents containing measurements.

**Archive** – A system that provides long term storage of evidence objects such as images, presentation states, Key Image Notes and Evidence Documents.

150 **Contourer** – A system that consumes one or more CT image series and creates an RT Structure Set. If the Contourer consumes multiple CT image series or has an internal requirement for resampling, it also will generate a single CT image series to which the RT Structure Set maps. A Contourer shall be able to consume CT image series with non-uniform spacing.

**Dosimetric Planner** – A system that consumes a single CT image series, an RT Structure Set, and a Geometric Plan and creates a Dosimetric Plan and an RT Dose.

155 **Archive (including RT)** – A system that stores the RT SOP Classes in addition to the CT images and is capable of transmitting them.

**Dose Displayer** – A system that consumes a Dosimetric Plan, a single CT image series, an RT Structure Set, and an RT Dose and displays the dose.

**Registrar** – A system that consumes multi-modality images and generates 1 or more Spatial Registration objects.

160 **Registered Contourer** – A system that consumes multi-modality images, RT Structure Set objects, and Spatial Registration objects and allows the user to contour images in a *Registered Display*.

**Registered Display** – A system that consumes multi-modality images, RT Structure Set objects, and Spatial Registration objects and allows the user to display the registered information.

165 **Registered Dose Display** – A system that consumes multi-modality images, RT Structure Set objects, RT Dose objects and Spatial Registration objects and allows the user to display the registered information.

**Basic Static Beam Producer** – A Treatment Planning System (TPS) capable of producing a radiation therapy treatment plan with static, non-MLC, treatment beams.

170 **Basic Static Beam Consumer** – A Treatment Planning System (TPS) capable of consuming a radiation therapy treatment plan with static, non-MLC, treatment beams.

- Basic Static MLC Beam Producer** – A Treatment Planning System (TPS) capable of producing a radiation therapy treatment plan with static, MLC, treatment beams.
- 175 **Basic Static MLC Beam Consumer** – A Treatment Planning System (TPS) capable of consuming a radiation therapy treatment plan with static, MLC, treatment beams.
- Arc Beam Producer** – A Treatment Planning System (TPS) capable of producing a radiation therapy treatment plan with non-MLC Fixed Aperture Arc treatment beams.
- Arc Beam Consumer** – A Treatment Planning System (TPS) capable of consuming a radiation therapy treatment plan with non-MLC Fixed Aperture Arc treatment beams.
- 180 **MLC Fixed Aperture Arc Beam Producer** – A Treatment Planning System (TPS) capable of producing a radiation therapy treatment plan with MLC Fixed Aperture Arc treatment beams.
- MLC Fixed Aperture Arc Beam Consumer** – A Treatment Planning System (TPS) capable of consuming a radiation therapy treatment plan with MLC Fixed Aperture Arc treatment beams.
- 185 **MLC Variable Aperture Arc Beam Producer** – A Treatment Planning System (TPS) capable of producing a radiation therapy treatment plan with MLC Variable Aperture Arc treatment beams.
- MLC Variable Aperture Arc Beam Consumer** – A Treatment Planning System (TPS) capable of consuming a radiation therapy treatment plan with MLC Variable Aperture Arc treatment beams.
- 190 **Hard Wedge Beam Producer** – A Treatment Planning System (TPS) capable of producing a radiation therapy treatment plan with static treatment beams using physical wedges.
- Hard Wedge Beam Consumer** – A Treatment Planning System (TPS) capable of consuming a radiation therapy treatment plan with static treatment beams using physical wedges.
- 195 **Virtual Wedge Beam Producer** – A Treatment Planning System (TPS) capable of producing a radiation therapy treatment plan with static treatment beams using virtual wedges.
- Virtual Wedge Beam Consumer** – A Treatment Planning System (TPS) capable of consuming a radiation therapy treatment plan with static treatment beams using virtual wedges.
- Motorized Wedge Beam Producer** – A Treatment Planning System (TPS) capable of producing a radiation therapy treatment plan with static treatment beams using motorized wedges.
- 200 **Motorized Wedge Beam Consumer** – A Treatment Planning System (TPS) capable of consuming a radiation therapy treatment plan with static treatment beams using motorized wedges.
- Static Electron Beam Producer** – A Treatment Planning System (TPS) capable of producing a radiation therapy treatment plan with static electron treatment beams.
- 205 **Static Electron Beam Consumer** – A Treatment Planning System (TPS) capable of consuming a radiation therapy treatment plan with static electron treatment beams.
- Step & Shoot Beam Producer** – A Treatment Planning System (TPS) capable of producing a radiation therapy treatment plan with step & shoot IMRT treatment beams.

- 210 **Step & Shoot Beam Consumer** – A Treatment Planning System (TPS) capable of consuming a radiation therapy treatment plan with step & shoot IMRT treatment beams.
- Sliding Window Beam Producer** – A Treatment Planning System (TPS) capable of producing a radiation therapy treatment plan with sliding window IMRT treatment beams.
- Sliding Window Beam Consumer** – A Treatment Planning System (TPS) capable of consuming a radiation therapy treatment plan with sliding window IMRT treatment beams.
- 215 **IMAT/VMAT Beam Producer** – A Treatment Planning System (TPS) capable of producing a radiation therapy treatment plan with VMAT/IMAT IMRT treatment beams.
- IMAT/VMAT Beam Consumer** – A Treatment Planning System (TPS) capable of consuming a radiation therapy treatment plan with VMAT/IMAT IMRT treatment beams.
- 220 **Photon Applicator Beam Producer** – A Treatment Planning System (TPS) capable of producing a radiation therapy treatment plan with static, stereotactic treatment beams.
- Photon Applicator Beam Consumer** – A Treatment Planning System (TPS) capable of consuming a radiation therapy treatment plan with static, stereotactic treatment beams.
- Photon Applicator Arc Beam Producer** – A Treatment Planning System (TPS) capable of producing a radiation therapy treatment plan with stereotactic arc treatment beams.
- 225 **Photon Applicator Arc Beam Consumer** – A Treatment Planning System (TPS) capable of consuming a radiation therapy treatment plan with stereotactic arc treatment beams.
- Treatment Management System** – An information system that manages the radiation oncology treatment process.
- Treatment Delivery Device** – A system that delivers therapeutic radiation to a patient.
- 230 **Object Storage** – An information system that provides short-term storage and retrieval of DICOM RT objects and other DICOM modalities objects for the duration of a treatment course.
- The following table shows which actors are used in which Integration Profiles.

**Table A-1: Integration Profile Actors**

Integration Profile Actor	BRT0-II	MMRO-III	TPPC	TDW-II
Acquisition Modality	X			
Archive	X			
Contourer	X			
Dosimetric Planner	X			
Dose Displayer	X			
Registrar		X		
Registered Contourer		X		
Registered Display		X		
Registered Dose Display		X		
Basic Static Beam Producer			X	
Basic Static Beam Consumer			X	
Basic Static MLC Beam Producer			X	

Integration Profile Actor	BRTO-II	MMRO-III	TPPC	TDW-II
Basic Static MLC Beam Consumer			X	
Arc Beam Producer			X	
Arc Beam Consumer			X	
MLC Fixed Aperture Arc Beam Producer			X	
MLC Fixed Aperture Arc Beam Consumer			X	
MLC Variable Aperture Arc Beam Producer			X	
MLC Variable Aperture Arc Beam Consumer			X	
Hard Wedge Beam Producer			X	
Hard Wedge Beam Consumer			X	
Virtual Wedge Beam Producer			X	
Virtual Wedge Beam Consumer			X	
Motorized Wedge Beam Producer			X	
Motorized Wedge Beam Consumer			X	
Static Electron Beam Producer			X	
Static Electron Beam Consumer			X	
Step & Shoot Beam Producer			X	
Step & Shoot Beam Consumer			X	
Sliding Window Beam Producer			X	
Sliding Window Beam Consumer			X	
IMAT/VMAT Beam Producer			X	
IMAT/VMAT Beam Consumer			X	
Photon Applicator Beam Producer			X	
Photon Applicator Beam Consumer			X	
Photon Applicator Arc Beam Producer			X	
Photon Applicator Arc Beam Consumer			X	
Treatment Management System			X	X
Treatment Delivery Device				X
Object Storage				X

235 **1.4.2 Transactions**

Transactions are interactions between actors that transfer the required information through standards-based messages.

For information on transactions defined for all domains, their transactions numbers, and a brief description, see IHE Technical Frameworks General Introduction, [Appendix B - Transactions](#).

240 For ease of use, a list of Radiation Oncology transactions for the profiles in this Volume 1, is provided below.

**Single/Contoured Image Series Retrieval [RO-1]:** The *Archive* stores a series of CT images to the *Contourer*, *Geometric Planner*, *Dosimetric Planner*, or *Dose Displayer*.

- 245 **Structure Set Storage [RO-2]:** The *Contourer* stores an RT Structure Set to the *Archive*. The RT Structure Set shall reference only a single CT image series.
- Geometric Plan Storage [RO-3]:** The *Geometric Planner* stores a newly created Geometric Plan to the *Archive*.
- 250 **Dosimetric Plan Storage [RO-4]:** The *Dosimetric Planner* stores a Dosimetric Plan containing references to the RT Structure Set to the *Archive*. A Dosimetric Plan, as defined in the BRTO-II Profile, is not meant to be consumed by another *Dosimetric Planner* or a Treatment Management System.
- Dose Storage [RO-5]:** The *Dosimetric Planner* stores a newly created RT Dose to the *Archive*.
- Multi-Series Image Retrieval [RO-6]:** The *Archive* stores CT images from multiple series (but a single study) to a *Contourer* to make these images available for contouring.
- 255 **Structure Set Retrieval [RO-7]:** The *Archive* stores an RT Structure Set on a *Contourer*, *Geometric Planner*, *Dosimetric Planner*, or *Dose Displayer*.
- Dosimetric Plan Retrieval [RO-9]:** The *Archive* stores a Dosimetric Plan containing the references to the RT Structure Set to the *Dose Displayer*.
- Dose Retrieval [RO-10]:** The *Archive* stores an RT Dose to the *Dose Displayer*.
- 260 **Resampled/Combined CT Series Storage [RO-11]:** The *Contourer* stores CT images which have been combined or resampled into a single series to the *Archive*.
- Registered Structure Set Storage [RO-MMRO-1]:** In the Registered Structure Set Storage Transaction, the *Registered Contourer* stores a Structure Set on an *Archive* to make it available.
- 265 **Registered Structure Set Retrieval [RO-MMRO-2]:** In the Registered Structure Set Retrieval Transaction, the *Archive* stores a Structure Set to a *Registered Contourer*, *Registered Display* or *Registered Dose Display*.
- Registered Dose Retrieval [RO-MMRO-3]:** In the Registered Dose Retrieval Transaction, the *Archive* stores the requested RT Dose to the *Registered Dose Display* Actor.
- 270 **Spatial Registration Storage [RO-MMRO-4]:** In the Spatial Registration Storage transaction, the *Registrar* stores one or more Spatial Registration instances to the *Archive*. Spatial registration objects define how the pixel coordinates of one image data set are transformed to another coordinate system (for example to a coordinate system defined by another image data set thus allowing each dataset to be spatially aligned). A list of the images used in each Frame of Reference to determine the spatial registration shall be stored in the Spatial Registration instance.
- 275 **Spatial Registration Retrieval [RO-MMRO-5]:** A *Registered Display*, *Registered Dose Display* or *Registered Contourer* receives from an *Archive* one or more Spatial Registration objects carrying the transformation information to be applied to two image data sets intended for further processing or registered display. Each application receiving a Spatial Registration instance shall compare the image set to be used / displayed to the list of images for each Frame of Reference and warn the user if additional images are to be displayed for which the spatial
- 280 registration may not be defined.

**Basic Static Beam Storage [TPPC-01]:** In the Basic Static Beam Storage transaction, a *Static Beam Producer* stores a treatment plan to the *Archive*. The treatment plan shall contain only static, non-MLC treatment beams.

285 **Basic Static Beam Retrieval [TPPC-02]:** In the Basic Static Beam Retrieval transaction, a *Static Beam Consumer* or a *TMS* receives a treatment plan from the *Archive*. The treatment plan shall contain only static, non-MLC treatment beams.

**Basic Static MLC Beam Storage [TPPC-03]:** In the Basic Static MLC Beam Storage transaction, a *Static MLC Beam Producer* stores a treatment plan to the *Archive*. The treatment  
290 plan shall contain only static, MLC treatment beams.

**Basic Static MLC Beam Retrieval [TPPC-04]:** In the Basic Static MLC Beam Retrieval transaction, a *Static MLC Beam Consumer* or a *TMS* receives a treatment plan from the *Archive*. The treatment plan shall contain only static, MLC treatment beams.

**Arc Beam Storage [TPPC-05]:** In the Arc Beam Storage transaction, an *Arc Beam Producer*  
295 stores a treatment plan to the *Archive*. The treatment plan shall contain only non-MLC Fixed Aperture Arc treatment beams.

**Arc Beam Retrieval [TPPC-06]:** In the Arc Beam Retrieval transaction, an *Arc Beam Consumer* or a *TMS* receives a treatment plan from the *Archive*. The treatment plan shall contain only non-MLC Fixed Aperture Arc treatment beams.

300 **MLC Fixed Aperture Arc Beam Storage [TPPC-07]:** In the MLC Fixed Aperture Arc Beam Storage transaction, an *MLC Fixed Aperture Arc Beam Producer* stores a treatment plan to the *Archive*. The treatment plan shall contain only MLC Fixed Aperture Arc treatment beams.

**MLC Fixed Aperture Arc Beam Retrieval [TPPC-08]:** In the MLC Fixed Aperture Arc Beam Retrieval transaction, an *MLC Fixed Aperture Arc Beam Consumer* or a *TMS* receives a  
305 treatment plan from the *Archive*. The treatment plan shall contain only MLC Fixed Aperture Arc treatment beams.

**MLC Variable Aperture Arc Beam Storage [TPPC-09]:** In the MLC Variable Aperture Arc Beam Storage transaction, an *MLC Variable Aperture Arc Beam Producer* stores a treatment  
310 plan to the *Archive*. The treatment plan shall contain only MLC Variable Aperture Arc treatment beams.

**MLC Variable Aperture Arc Beam Retrieval [TPPC-10]:** In the MLC Variable Aperture Arc Beam Retrieval transaction, an *MLC Variable Aperture Arc Beam Consumer* or a *TMS* receives a treatment plan from the *Archive*. The treatment plan shall contain only MLC Variable Aperture Arc treatment beams.

315 **Hard Wedge Beam Storage [TPPC-11]:** In the Hard Wedge Beam Storage transaction, a *Hard Wedge Beam Producer* stores a treatment plan to the *Archive*. The treatment plan shall contain only static treatment beams using physical wedges.

**Hard Wedge Beam Retrieval [TPPC-12]:** In the Hard Wedge Beam Retrieval transaction, a  
320 *Hard Wedge Beam Consumer* or a *TMS* receives a treatment plan from the *Archive*. The treatment plan shall contain only static treatment beams using physical wedges.

**Virtual Wedge Beam Storage [TPPC-13]:** In the Virtual Wedge Beam Storage transaction, a *Virtual Wedge Beam Producer* stores a treatment plan to the *Archive*. The treatment plan shall contain only static treatment beams using virtual wedges.

325 **Virtual Wedge Beam Retrieval [TPPC-14]:** In the Virtual Wedge Beam Retrieval transaction, a *Virtual Wedge Beam Consumer* or a *TMS* receives a treatment plan from the *Archive*. The treatment plan shall contain only static treatment beams using virtual wedges.

**Motorized Wedge Beam Storage [TPPC-15]:** In the Motorized Wedge Beam Storage transaction, a *Motorized Wedge Beam Producer* stores a treatment plan to the *Archive*. The treatment plan shall contain only static treatment beams using motorized wedges.

330 **Motorized Wedge Beam Retrieval [TPPC-16]:** In the Motorized Wedge Beam Retrieval transaction, a *Motorized Wedge Beam Consumer* or a *TMS* receives a treatment plan from the *Archive*. The treatment plan shall contain only static treatment beams using motorized wedges.

335 **Static Electron Beam Storage [TPPC-17]:** In the Static Electron Beam Storage transaction, a *Static Electron Beam Producer* stores a treatment plan to the *Archive*. The treatment plan shall contain only static electron treatment beams.

**Static Electron Beam Retrieval [TPPC-18]:** In the Static Electron Beam Retrieval transaction, a *Static Electron Beam Consumer* or a *TMS* receives a treatment plan from the *Archive*. The treatment plan shall contain only static electron treatment beams.

340 **Step & Shoot Beam Storage: [TPPC-19]** In the Step & Shoot Beam Storage transaction, a *Step & Shoot Beam Producer* stores a treatment plan to the *Archive*. The treatment plan shall contain only step & shoot IMRT treatment beams.

**Step & Shoot Beam Retrieval [TPPC-20]:** In the Step & Shoot Beam Retrieval transaction, a *Step & Shoot Beam Consumer* or a *TMS* receives a treatment plan from the *Archive*. The treatment plan shall contain only step & shoot IMRT treatment beams.

345 **Sliding Window Beam Storage [TPPC-21]:** In the Sliding Window Beam Storage transaction, a *Sliding Window Beam Producer* stores a treatment plan to the *Archive*. The treatment plan shall contain only sliding window IMRT treatment beams.

350 **Sliding Window Beam Retrieval [TPPC-22]:** In the Sliding Window Beam Retrieval transaction, a *Sliding Window Beam Consumer* or a *TMS* receives a treatment plan from the *Archive*. The treatment plan shall contain only sliding window IMRT treatment beams.

**IMAT/VMAT Beam Storage [TPPC-23]:** In the IMAT/VMAT Beam Storage transaction, an *IMAT/VMAT Beam Producer* stores a treatment plan to the *Archive*. The treatment plan shall contain only IMAT/VMAT IMRT treatment beams.

355 **IMAT/VMAT Beam Retrieval [TPPC-24]:** In the IMAT/VMAT Beam Retrieval transaction, an *IMAT/VMAT Beam Consumer* or a *TMS* receives a treatment plan from the *Archive*. The treatment plan shall contain only IMAT/VMAT IMRT treatment beams.

**Photon Applicator Beam Storage [TPPC-25]:** In the Photon Applicator Beam Storage transaction, a *Photon Applicator Beam Producer* stores a treatment plan to the *Archive*. The treatment plan shall contain only static treatment beams using photon applicators.

- 360 **Photon Applicator Beam Retrieval [TPPC-26]:** In the Photon Applicator Beam Retrieval transaction, a *Photon Applicator Beam Consumer* or a *TMS* receives a treatment plan from the *Archive*. The treatment plan shall contain only static treatment beams using photon applicator.
- Photon Applicator Arc Beam Storage [TPPC-27]:** In the Stereotactic Arc Beam Storage transaction, a *Stereotactic Arc Beam Producer* stores a treatment plan to the *Archive*. The
- 365 treatment plan shall contain only stereotactic arc treatment beams.
- Photon Applicator Arc Beam Retrieval [TPPC-28]:** In the Stereotactic Arc Beam Retrieval transaction, a *Stereotactic Arc Beam Consumer* or a *TMS* receives a treatment plan from the *Archive*. The treatment plan shall contain only stereotactic **arc** treatment beams.
- Query Worklist for Treatment Sessions Workitems [RO-58]:** A TDD requests and receives
- 370 workitems from a treatment sessions worklist managed by a TMS.
- Retrieve Static Treatment Delivery Input Instances [RO-59]:** A TDD requests and receives from the OST any ‘static’ SOP Class Instances required to perform the treatment delivery task of the workitem.
- Claim Treatment Session Workitem [RO-60]:** A TDD signals to the TMS that responsibility
- 375 has been taken to perform the selected procedure step by changing its status to IN PROGRESS.
- Retrieve Dynamic Treatment Delivery Input Instances [RO-61]:** A TDD requests and receives SOP Class Instances from the TMS to support the execution of the selected procedure step. These requested instances are of a “transient” nature, specifically the RT Beams Delivery Instruction. Note that this transaction takes place either before or after RO-60, but not both.
- 380 **Update Treatment Delivery Progress [RO-62]:** A TDD signals to the TMS changes in the progress of the procedure step that is currently in progress. This transaction may occur more than once in this profile, as the delivery status changes.
- Store Treatment Delivery Results [RO-63]:** When a procedure step has been completed by a TDD, the results of the procedure step are stored to the OST. These results are referenced in the
- 385 Output Information Sequence of the corresponding Unified Procedure Step.
- Update Workitem to Final State [RO-64]:** A TDD signals to the TMS final changes in the properties of the procedure step that is currently in progress just prior to the UPS being signaled as completed or canceled.
- 390 **Complete/Cancel Treatment Delivery [RO-65]:** A TDD signals to the TMS that the selected procedure step has either been completed or canceled.

The following table shows which transactions are used in which Integration Profiles.

**Table 1.4.2-1: Integration Profile Transactions**

Integration Profile Transaction	BRTO-II	MMRO-III	TPPC	TDW-II
Single/Contoured Image Series Retrieval	X			
Structure Set Storage	X			
Dosimetric Plan Storage	X			
Dose Storage	X			
Multi-Series Image Retrieval	X			

Integration Profile Transaction	BRTO-II	MMRO-III	TPPC	TDW-II
Structure Set Retrieval	X			
Dosimetric Plan Retrieval	X			
Dose Retrieval	X			
Resampled/ Combined CT Series Storage	X			
Registered Structure Set Storage		X		
Registered Structure Set Retrieval		X		
Registered Dose Retrieval		X		
Spatial Registration Storage		X		
Spatial Registration Retrieval		X		
Basic Static Beam Storage			X	
Basic Static Beam Retrieval			X	
Basic Static MLC Beam Storage			X	
Basic Static MLC Beam Retrieval			X	
Arc Beam Storage			X	
Arc Beam Retrieval			X	
MLC Fixed Aperture Arc Beam Storage			X	
MLC Fixed Aperture Arc Beam Retrieval			X	
MLC Variable Aperture Arc Beam Storage			X	
MLC Variable Aperture Arc Beam Retrieval			X	
Hard Wedge Beam Storage			X	
Hard Wedge Beam Retrieval			X	
Virtual Wedge Beam Storage			X	
Virtual Wedge Beam Storage			X	
Motorized Wedge Beam Storage			X	
Motorized Wedge Beam Retrieval			X	
Static Electron Beam Storage			X	
Static Electron Beam Retrieval			X	
Step & Shoot Beam Storage			X	
Step & Shoot Beam Retrieval			X	
Sliding Window Beam Storage			X	
Sliding Window Beam Retrieval			X	
IMAT/VMAT Beam Storage			X	
IMAT/VMAT Beam Retrieval			X	
Photon Applicator Beam Storage			X	
Photon Applicator Beam Retrieval			X	
Photon Applicator Arc Beam Storage			X	
Photon Applicator Arc Beam Retrieval			X	
Query Worklist for Treatment Sessions Workitems [RO-58]				X
Retrieve Static Treatment Delivery Input Instances [RO-59]				X

Integration Profile Transaction	BRTO-II	MMRO-III	TPPC	TDW-II
Claim Treatment Session Workitem [RO-60]				X
Retrieve Dynamic Treatment Delivery Input Instances [RO-61]				X
Update Treatment Delivery Progress [RO-62]				X
Store Treatment Delivery Results [RO-63]				X
Update Workitem to Final State [RO-64]				X
Complete/Cancel Treatment Delivery [RO-65]				X

### 1.4.3 IHE Integration Statements

395 IHE Integration Statements provide a consistent way to document high level IHE implementation status in products between vendors and users.

The instructions and template for IHE Integration Statements can be found in the IHE Technical Frameworks General Introduction, [Appendix F - Integration Statements](#).

400 IHE also provides the IHE Product Registry ([http://www.ihe.net/IHE\\_Product\\_Registry](http://www.ihe.net/IHE_Product_Registry)) as a resource for vendors and purchasers of HIT systems to communicate about the IHE compliance of such systems. Vendors can use the Product Registry to generate and register Integration Statements.

## 1.5 Overview of Technical Framework Volume 1

Volume 1 is comprised of several distinct sections:

- 405
- Section 1 provides background and reference material.
  - Section 2 presents the conventions used in this volume to define the profiles.
  - Sections 3 and beyond define Radiation Oncology profiles, actors, and requirements in detail.

The appendices in Volume 1 provide clarification of uses cases or other details.

410 For a brief overview of additional Technical Framework Volumes (TF-2, TF-3, TF-4), please see the IHE Technical Frameworks General Introduction, [Section 5](#).

## 1.6 Comment Process

IHE and AAPM welcome comments on this document and the IHE RO initiative. Comments on the IHE RO initiative can be submitted by sending an email to:

415 Jill I. Moton, MBA  
 Program Manager  
 American Association of Physicists in Medicine (AAPM)  
 1631 Prince Street  
 Alexandria, VA 22314  
 420 [jill@aapm.org](mailto:jill@aapm.org)

Comments on this document can be submitted at  
[http://ihe.net/Radiation\\_Oncology\\_Public\\_Comments](http://ihe.net/Radiation_Oncology_Public_Comments).

## 1.7 Copyright Licenses

425 IHE technical documents refer to, and make use of, a number of standards developed and published by several standards development organizations. Please refer to the IHE Technical Frameworks General Introduction, [Section 9 - Copyright Licenses](#) for copyright license information for frequently referenced base standards. Information pertaining to the use of IHE International copyrighted materials is also available there.

## 1.8 Trademark

430 IHE<sup>®</sup> and the IHE logo are trademarks of the Healthcare Information Management Systems Society in the United States and trademarks of IHE Europe in the European Community. Please refer to the IHE Technical Frameworks General Introduction, [Section 10 - Trademark](#) for information on their use.

## 1.9 Disclaimer Regarding Patent Rights

435 Attention is called to the possibility that implementation of the specifications in this document may require use of subject matter covered by patent rights. By publication of this document, no position is taken with respect to the existence or validity of any patent rights in connection therewith. IHE International is not responsible for identifying Necessary Patent Claims for which a license may be required, for conducting inquiries into the legal validity or scope of Patents  
 440 Claims or determining whether any licensing terms or conditions provided in connection with submission of a Letter of Assurance, if any, or in any licensing agreements are reasonable or non-discriminatory. Users of the specifications in this document are expressly advised that determination of the validity of any patent rights, and the risk of infringement of such rights, is entirely their own responsibility. Further information about the IHE International patent  
 445 disclosure process including links to forms for making disclosures is available at [http://www.ihe.net/Patent\\_Disclosure\\_Process](http://www.ihe.net/Patent_Disclosure_Process). Please address questions about the patent disclosure process to the secretary of the IHE International Board: [secretary@ihe.net](mailto:secretary@ihe.net).

## 1.10 History of Document Changes

This section provides a brief summary of changes and additions to this document.

450

Date	Document Revision	Change Summary
2007		Initiated the IHE Radiation Oncology Technical Frameworks with the <i>Basic Radiation Therapy Objects</i> Integration Profile (BRTO).
2011		Updated the front matter sections of Volumes 1 and 2 of the IHE Radiation Oncology Technical Frameworks to be consistent with newly released domain-wide sections.
2014		Updated Volumes 1 and 2 of the IHE Radiation Oncology Technical Frameworks to include approved 2013 change proposals and technical frameworks formatting changes.

## IHE Radiation Oncology Technical Framework, Vol. 1 (RO TF-1): Profiles

---

<b>Date</b>	<b>Document Revision</b>	<b>Change Summary</b>
2020	2.0	Updated Volumes 1 and 2 of the IHE Radiation Oncology Technical Frameworks to include profiles voted to Final Text. Also initiated a Volume 3 to include DICOM Content Modules. Updated format of Section 1 to match current released Volume 1 template.
SEPT 2025	3.0	Updated per CPs and to align with current template and incorporated TDW-II.
MAY 2026	4.0	Updates per CP-RO-026

## 2 Radiation Oncology Integration Profiles

IHE Radiation Oncology Integration Profiles (Figure 2-1), offer a common language that healthcare professionals and vendors can use to discuss integration needs of healthcare enterprises and the integration capabilities of information systems in precise terms. Integration Profiles specify implementations of standards that are designed to meet identified clinical needs. They enable users and vendors to state which IHE capabilities they require or provide, by reference to the detailed specifications of the IHE Radiation Oncology Technical Framework.

Integration profiles are defined in terms of IHE actors and transactions. Actors (see RO TF-1: Appendix A) are information systems or components of information systems that produce, manage, or act on information associated with clinical and operational activities in the enterprise. Transactions (see RO TF-1: Appendix B) are interactions between actors that communicate the required information through standards-based messages.

Vendor products support an Integration Profile by implementing the appropriate actor(s) and transactions. A given product may implement more than one actor and more than one integration profile. Some profiles are content only and are vehicles for defining how attributes and values are grouped to give useful backing to the other, workflow-based profiles.

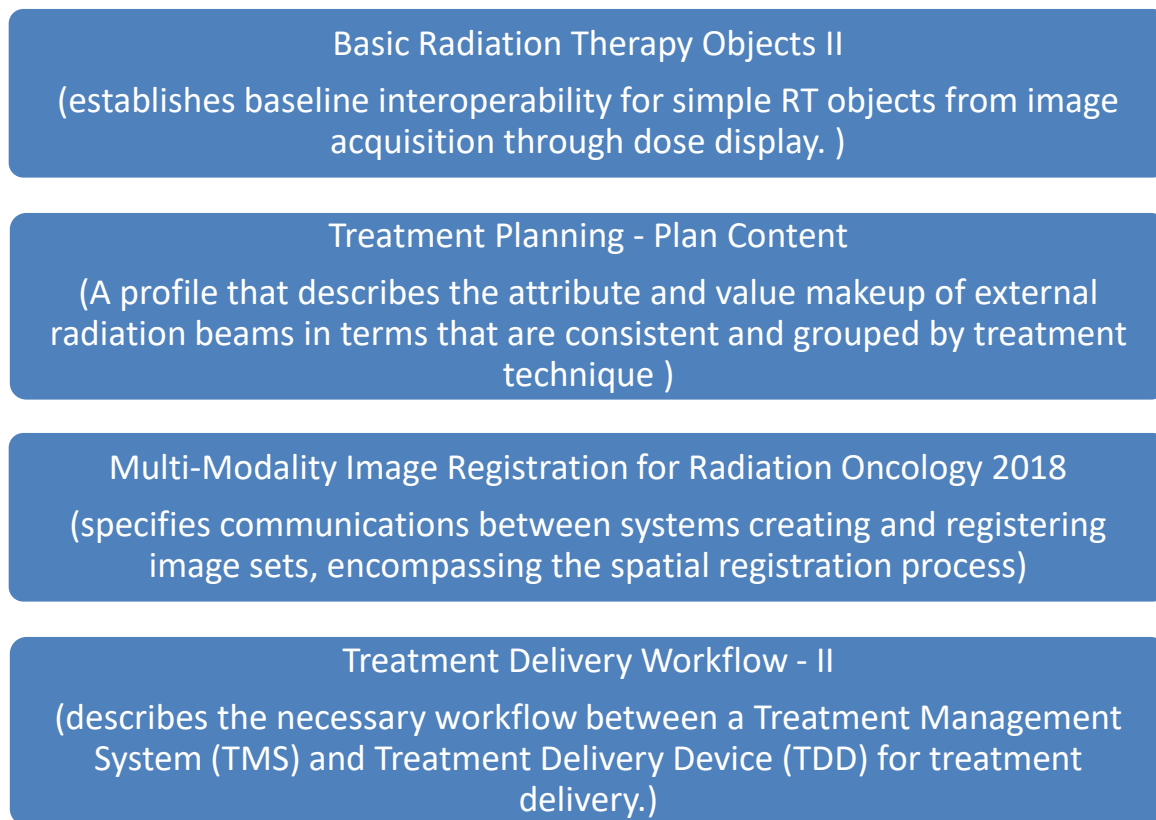


Figure 2-1: IHE Radiation Oncology Integration Profiles

## 2.1 Dependencies among Integration Profiles

Dependencies among IHE Integration Profiles exist when implementation of one integration profile is a prerequisite for achieving the functionality defined in another integration profile.

475 Figure 2-1 provides a graphical view of the dependencies among IHE Radiation Oncology Integration Profiles and between IHE RO Integration Profiles and Integration Profiles from other domains (such as Radiology). The arrows in the figure point from a given integration profile to the integration profile(s) upon which it depends. Table 2.1-1 defines these dependencies in tabular form.

480 Some dependencies require that an actor supporting one profile be grouped with one or more actors supporting other integration profiles. For example (see the ITI Technical Framework), Enterprise User *Authentication (EUA)* requires that different actors be grouped with the *Time Client Actor* that participates in the Consistent Time (CT) Integration Profile. The dependency exists because EUA Actors must refer to consistent time to function properly.

485 **Table 2.1-1: Integration Profiles Dependencies**

Integration Profile	Depends on	Dependency Type	Purpose
Basic Radiation Therapy Objects II	Scheduled Workflow	Acquisition Modality Image Storage (RAD-8)	CT Images will be stored in the archive in accordance with the referenced transaction
Multimodality Image Registration for Radiation Oncology 2018	Scheduled Workflow	Acquisition Modality Image Storage (RAD-8)	Modality Images (CT, MR, PT... ) will be stored in the archive in accordance with the referenced transaction
Multimodality Image Registration for Radiation Oncology 2018	Scheduled Workflow	Creator Images Stored (RAD-18)	Created Images (CT, MR, PT... ) will be stored in the archive in accordance with the referenced transaction
Multimodality Image Registration for Radiation Oncology 2018	Basic Radiation Therapy Objects II	Dose Storage [RO-5]	RT Dose will be stored in the archive in accordance with the referenced transaction
Treatment Delivery Workflow - II	None	None	None

To support a dependent profile, an actor must implement all required transactions in the prerequisite profiles in addition to those in the dependent profile. In some cases, the prerequisite is that the actor selects any one of a given set of profiles.

## 490 2.2 Security Implications

IHE transactions often contain information that must be protected in conformance with privacy laws, regulations and best practices. This protection is documented in the Security Considerations section of each profile, which communicates security/privacy concerns that the implementers need to be aware of, assumptions made about security/privacy pre-conditions and, where appropriate, key elements of a risk mitigation strategy to be applied.

495

## 2.3 Profiles Overview

A brief overview of each Radiation Oncology profile is provided on the IHE Wiki at <https://wiki.ihe.net/index.php/Profiles>.

## 2.4 Product Implementations

- 500 As described in detail in the [IHE Technical Frameworks General Introduction](#), an implementer chooses specific profiles, actors, and options to implement for their product. To comply with an actor in an IHE profile, a system must perform all the required transactions for that actor in that profile.
- 505 To communicate the conformance of a product offering with IHE profiles, implementers provide an IHE Integration Statement describing which IHE integration profiles, IHE actors and options are incorporated.
- 510 Further discussion about integration statements and a sample form can be found in the IHE Technical Frameworks General Introduction, [Appendix F](#). To make consumers aware of the product integration statement, enter it in the IHE Product Registry (<http://product-registry.ihe.net/>).

### 3 Basic Radiation Therapy Objects Integration Profile II (BRTO-II)

515 The *Basic Radiation Therapy Objects II* Integration Profile involves the flow of DICOM images and treatment planning data, from CT scan through dose display, for 3D conformal, external beam radiation therapy. Detailed plan content for different types of delivery are specified in separate profiles. The emphasis for this integration profile is on reducing ambiguity and facilitating basic interoperability in the exchange of DICOM RT objects.

The BRTO II Profile has the following implications:

- 520 • All related DICOM objects (CT images, RT Structure Sets, RT Plans, and RT Doses) are required to be in the same frame of reference and have the same Frame of Reference UID.
- The orientation of images, structures, plans, and doses must be consistent, with the exception that head-first/feet-first directions may be altered between scans and treatment delivery.

525 The profile also addresses some capabilities that have been shown to affect interoperability of applications during the Radiation Oncology Treatment Planning Process. The issues addressed include the following:

- Variable Slice Spacing – As above, CT devices may produce image datasets with different slice spacing within a single series. All applications must be able to accept such datasets.
- 530 • If a Contourer creates an RT Structure Set based on a resampled image set, the Contourer must be able to store the resampled image
- Dose Grid Spacing – Many applications are capable of producing RT Dose objects with different spacing in the X, Y, and Z dimensions. This implies that dose grids are regular inplane but not guaranteed to have equal row and column spacing. Z-spacing (slice spacing) can be different from the X and Y spacing. This profile requires equidistant Z-spacing for the RT Dose.
- 535 • Systems create eXclusive OR (XOR) contours (contours within contours) and do not mark them explicitly as such.
- 540 • If a contour consumer cannot handle an XOR set of contour data correctly by faithfully reconstructing the structure’s location and volume within acceptable clinical limits, then it must check for the XOR condition and handle that contour data safely.

#### 3.1 Actors / Transactions

545 Table 3.1-1 lists the transactions for each actor directly involved in the *Basic Radiation Therapy Objects II* Integration Profile. In order to claim support of this Integration Profile, an implementation must perform the required transactions (labeled “R”). A complete list of options defined by this Integration Profile and that implementations may choose to support are listed in IHE RO TF-1: 3.2.

**Table 3.1-1: Basic RT Objects Integration Profile II - Actors and Transactions**

Actors	Transactions	Optionality	Section
Archive	Single/Contoured Series Image Retrieval [RO-1]	R	RO TF-2: 3.1
	Structure Set Storage [RO-2]	R	RO TF-2: 3.2
	Off-slice Structure Set Storage [RO-BRTO-II-1]	R	RO TF-2: 3.3
	Dosimetric Plan Storage [RO-4]	R	RO TF-2: 3.4
	Dose Storage [RO-BRTO-II-5]	R	RO TF-2: 3.5
	DVH Dose Storage [RO-BRTO-II-3]	R	RO TF-2: 3.6
	Structure Set Retrieval [RO-7]	R	RO TF-2: 3.7
	Off-slice Structure Set Retrieval [RO-BRTO-II-2]	R	RO TF-2: 3.8
	Geometric Plan Retrieval [RO-8]	R	RO TF-2: 3.9
	Dosimetric Plan Retrieval [RO-9]	R	RO TF-2: 3.10
	Dose Retrieval [RO-BRTO-II-6]	R	RO TF-2: 3.11
	DVH Dose Retrieval [RO-BRTO-II-4]	R	RO TF-2: 3.12
	Resampled/Combined CT Series Storage [RO-11]	R	RO TF-2: 3.13
Contourer	Single/Contoured Series Image Retrieval [RO-1]	R	RO TF-2: 3.1
	Structure Set Storage [RO-2]	R	RO TF-2: 3.2
	Off-slice Structure Set Storage [RO-BRTO-II-1]	O	RO TF-2: 3.3
	Structure Set Retrieval [RO-7]	O	RO TF-2: 3.7
	Off-slice Structure Set Retrieval [RO-BRTO-II-2]	O	RO TF-2: 3.8
	Resampled/Combined CT Series Storage [RO-11]	O	RO TF-2: 3.13
Dosimetric Planner	Dosimetric Plan Storage [RO-4]	R	RO TF-2: 3.4
	Dose Storage [RO-BRTO-II-5]	R	RO TF-2: 3.5
	DVH Dose Storage [RO-BRTO-II-3]	O	RO TF-2: 3.6
	Structure Set Storage [RO-2]	R	RO TF-2: 3.2
	Off-slice Structure Set Storage [RO-BRTO-II-1]	O	RO TF-2: 3.3
	Geometric Plan Retrieval [RO-8]	O	RO TF-2: 3.9
	Structure Set Retrieval [RO-7]	R	RO TF-2: 3.7
	Off-slice Structure Set Retrieval [RO-BRTO-II-2]	O	RO TF-2: 3.8
	Single/Contoured Series Image Retrieval [RO-1]	R	RO TF-2: 3.1
	Resampled/Combined CT Series Storage [RO-11]	O	RO TF-2: 3.13
Dose Displayer	Dose Retrieval [RO-BRTO-II-6]	R	RO TF-2: 3.11
	DVH Dose Retrieval [RO-BRTO-II-4]	O	RO TF-2: 3.12
	Dosimetric Plan Retrieval [RO-9]	R	RO TF-2: 3.10
	Structure Set Retrieval [RO-7]	R	RO TF-2: 3.7
	Off-slice Structure Set Retrieval [RO-BRTO-II-2]	O	RO TF-2: 3.8
	Single/Contoured Series Image Retrieval [RO-1]	R	RO TF-2: 3.1

550 Figure 3.1-1 shows the actors directly involved in the *Basic RT Objects II* Integration Profile and the relevant transactions between them. Other actors that may be indirectly involved due to their participation in *Scheduled Workflow* are not necessarily shown.

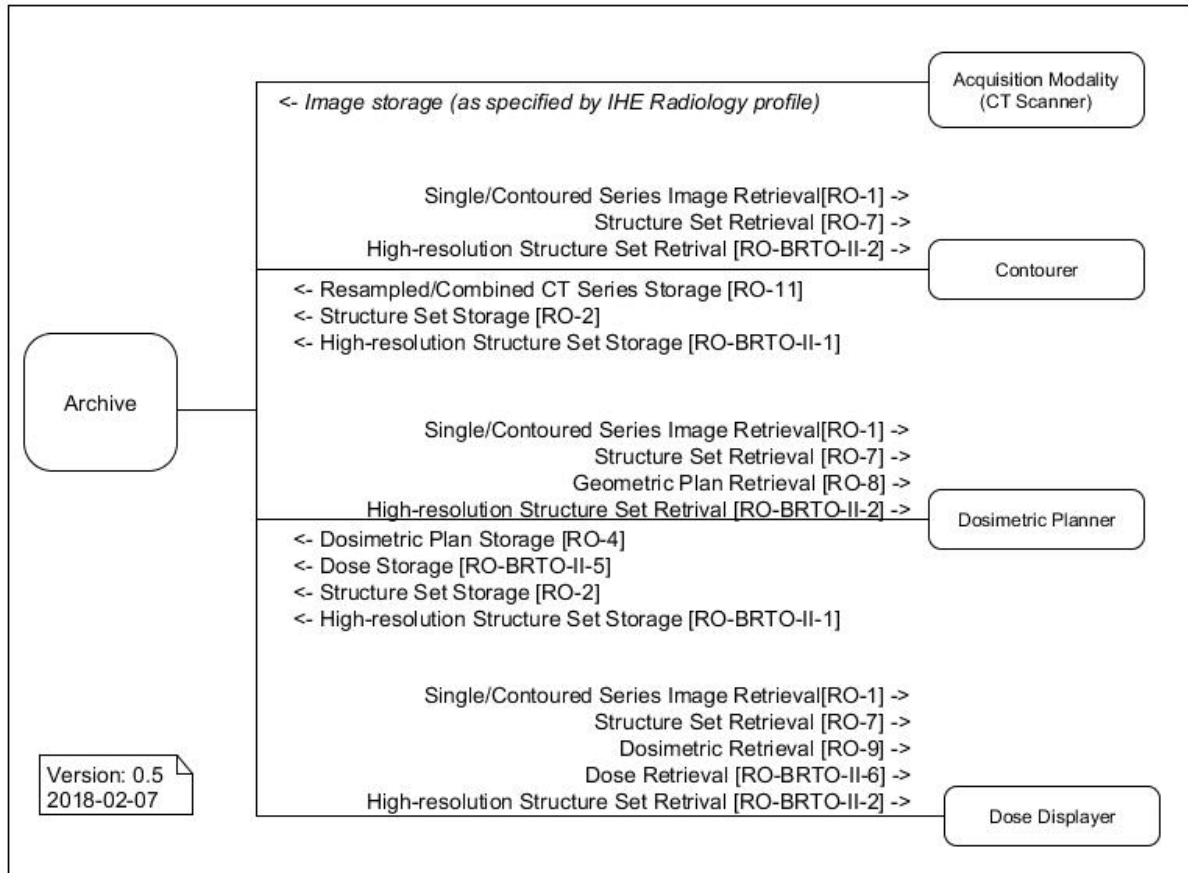


Figure 3.1-1: Basic RT Objects Actor Diagram

555 **3.1.1 Actor Descriptions and Actor Profile Requirements**

Most requirements are documented in Transactions (Volume 2) and Content Modules (Volume 3). This section documents any additional requirements on profile's actors.

560 **Acquisition Modality** – A system that acquires and creates medical images while a patient is present, e.g., a Computed Tomography scanner or Nuclear Medicine camera. A modality may also create other evidence objects such as Grayscale Softcopy Presentation States for the consistent viewing of images or Evidence Documents containing measurements.

**Archive** – A system that provides long term storage of evidence objects such as images, presentation states, Key Image Notes and Evidence Documents.

565 **Contourer** – A system that consumes one or more CT image series and creates an RT Structure Set. If the Contourer consumes multiple CT image series or has an internal requirement for

resampling, it also will generate a single CT image series to which the RT Structure Set maps. A Contourer shall be able to consume CT image series with non-uniform spacing.

**Dosimetric Planner** – A system that consumes a single CT image series, an RT Structure Set, and a Geometric Plan and creates a Dosimetric Plan and an RT Dose.

570 **Archive (including RT)** – A system that stores the RT SOP Classes in addition to the CT images and is capable of transmitting them.

**Dose Displayer** – A system that consumes a Dosimetric Plan, a single CT image series, an RT Structure Set, and an RT Dose and displays the dose.

### 3.2 Basic RT Objects Integration Profile Options

575 Options that may be selected for this Integration Profile are listed in Table 3.2-1 along with the IHE actors to which they apply. Dependencies between options when applicable are specified in notes.

**Table 3.2-1: Basic RT Objects - Actors and Options**

Actor	Options	Vol & Section
Archive	<i>None</i>	--
Contourer	<i>Feet First, Decubitus</i>	See RO TF-3: 7.3.3.2.3
	<i>Off-Slice Structure Set</i>	See RO TF-3: 7.3.4.1.1
	<i>Resampled/ Combined CT Storage</i>	See RO TF-2: 3.13
Dosimetric Planner	<i>Feet First, Reoriented*, Decubitus</i>	See RO TF-3: 7.3.2.2.1 (RT Plan)
	<i>Off-Slice Structure Set</i>	See RO TF-3: 7.3.4.1.1
	<i>DVH Dose</i>	See RO TF-3: 7.3.5.1.1
Dose Displayer	<i>Resampled/ Combined CT Storage</i>	See RO TF-2: 3.13
	<i>Off-Slice Structure Set</i>	See RO TF-3: 7.3.4.1.1
	<i>DVH Dose</i>	See RO TF-3: 7.3.5.1.1

580 \*Reoriented: Patient position in treatment setup differs from image patient position. This option is restricted to HFS/HFP/FFS/FFP.

### 3.3 BRTO II Required Actor Groupings

None.

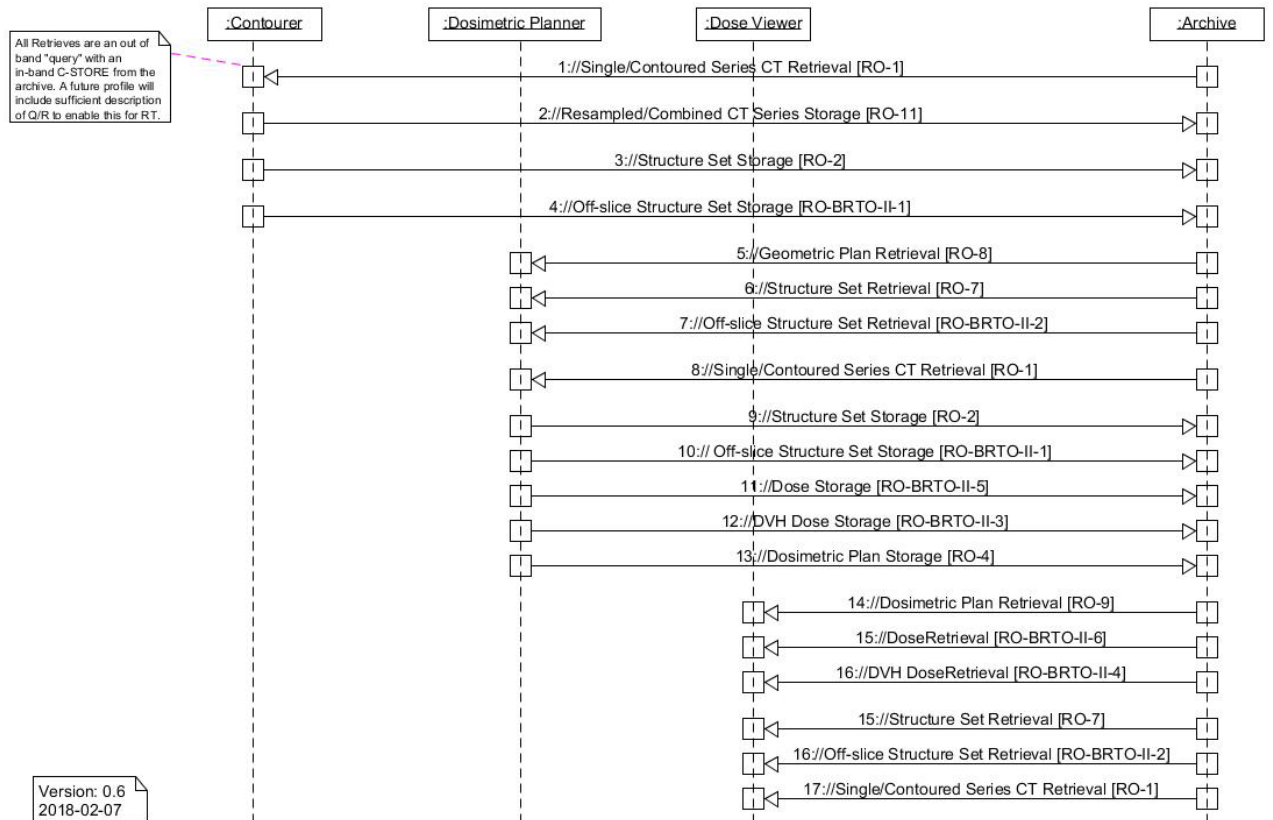
### 3.4 BRTO II Overview

#### 3.4.1 Concepts

585 *Basic Radiation Therapy Objects II* involves the flow of DICOM images and treatment planning data, from image contouring through dose display, for external beam radiation therapy based on volumetric images. The emphasis for this Integration Profile is on reducing ambiguity and facilitating basic interoperability in the exchange of DICOM RT objects.

590 Structures used within the scope of this profile may be drawn on a CT slice (on-slice contour) or optionally between the CT slices (off-slice contour). Off-slice contouring may be used to represent more detailed structural information. Such information may come from other imaging modalities or from processing CT-derived structures.

### 3.4.2 Use Cases



595

**Figure 3.4.2-1: Basic Process Flow in Basic RT Objects Profile**

#### 3.4.2.1 Use Case #1: Segmentation of Treatment-Relevant Structures

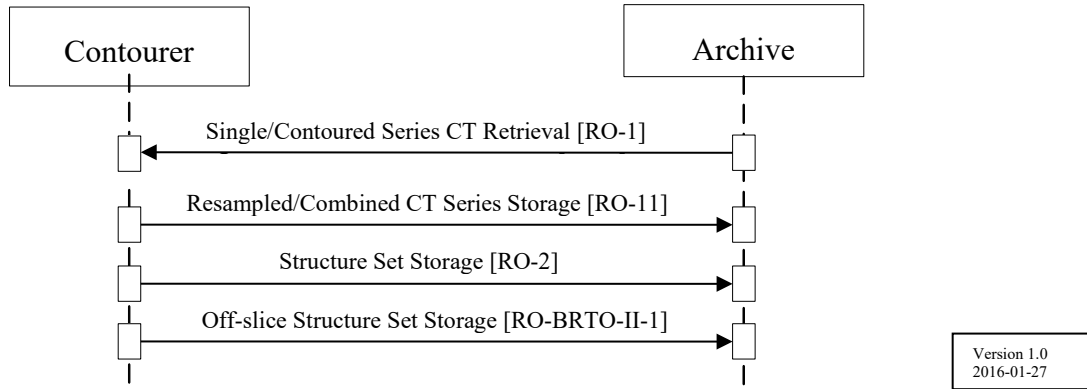
At the beginning of the planning process for a Radiation Therapy, treatment-relevant structures have to be contoured based on an image data set. These structures shall be persisted in an RT Structure Set.

600

##### 3.4.2.1.1 Segmentation of Treatment-Relevant Structures Use Case Description

The user wants to create a structure object containing the target volume(s) and organs at risk relevant for a treatment planning. These objects are contoured on an initial CT image set. When the contouring is finished the structure object will be persisted in an archive.

605 **3.4.2.1.2 Segmentation of Treatment-Relevant Structures Process Flow**



**Figure 3.4.2.1.2-1: Segmentation of Treatment-Relevant Structures Process Flow in BRTO-II Profile**

610 **Pre-conditions:**

The initial image set is available.

**Main Flow:**

The initial image set is retrieved by the contouring system, which sends the RT Structure Set back to the archiving system.

615 **Post-conditions:**

The RT Structure Set is archived.

**3.4.2.2 Use Case #2: Treatment Planning Based on Segmented Objects**

Based on the previously contoured structures a treatment planning is performed. As a result, an RT Plan and an RT Dose object are persisted, representing the planning result.

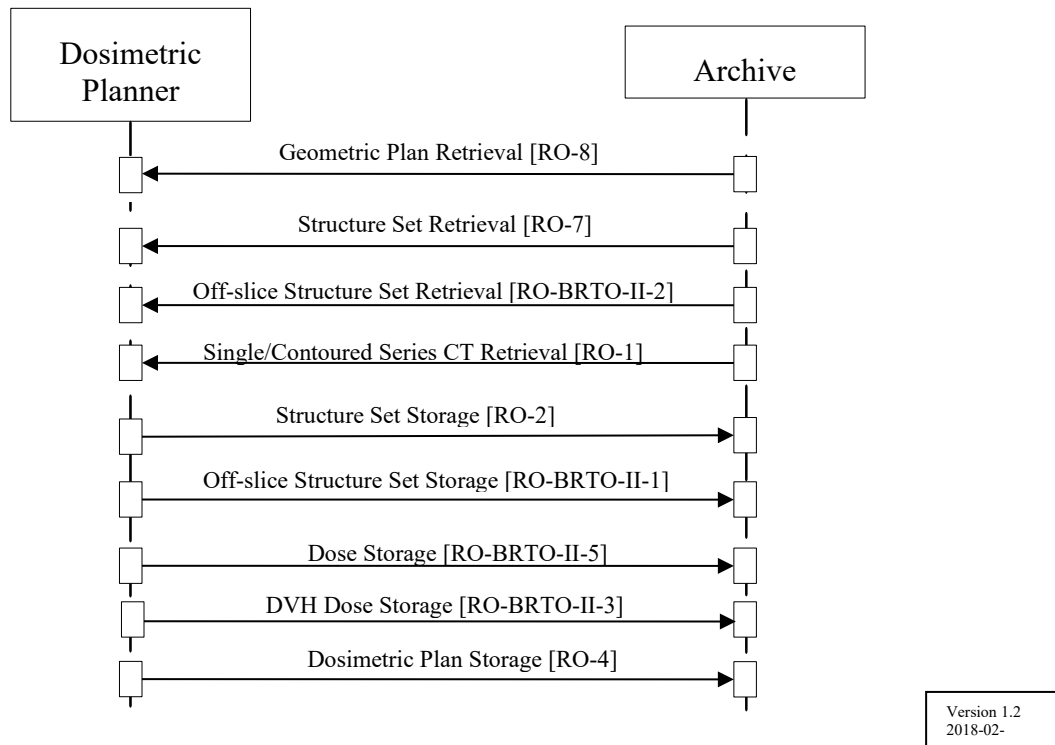
620 **3.4.2.2.1 Treatment Planning Based on Segmented Objects Use Case Description**

The user wants to create a treatment plan for the patient based on previously contoured object definitions. These object definitions and referenced image sets are retrieved by the Treatment Planning System (TPS) acting as a Dosimetric Planner. The user creates an appropriate plan for treatment. The content of such a plan is beyond the scope of this profile. The resulting RT Plan and a corresponding dose distribution shall be saved back to an archive.

625

Optionally the Dose Volume Histogram (DVH) is saved back to the archive.

**3.4.2.2.2 Treatment Planning Based on Segmented Objects Process Flow**



630

**Figure 3.4.2.2.2-1: Treatment Planning Based on Segmented Objects Process Flow in BRT0-II Profile**

**Pre-conditions:**

The initial image set and RT Structure Set are available.

635 **Main Flow:**

The initial image set(s) and RT Structure Set are retrieved by the Treatment Planning System (TPS). The user creates RT Plan on the TPS and calculates the dose. The TPS sends the results back to the archiving system.

**Post-conditions:**

640 The RT Plan and RT Dose objects are archived.

**3.4.2.3 Use Case #3: Dose Display of Treatment Planning Results**

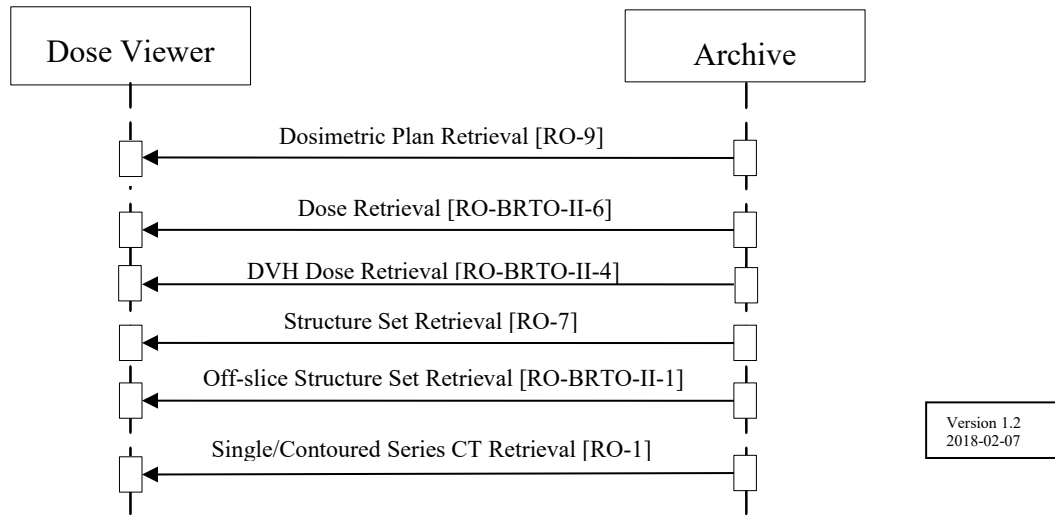
The result of previous treatment planning is shown to the user.

**3.4.2.3.1 Dose Display of Treatment Planning Results Use Case Description**

645 The user wants to inspect the result of previous treatment planning. The created object definitions including the dose distribution are retrieved by the Dose Displayer and shown to the user.

Optionally the Dose Volume Histogram (DVH) is imported and displayed.

### 3.4.2.3.2 Dose Display of Treatment Planning Results Process Flow



650

**Figure 3.4.2.3.2-1: Dose Display of Treatment Planning Results Process Flow in BRTO-II Profile**

**Pre-conditions:**

The planning CT image set, RT Structure Set, RT Plan and RT Dose are available.

655

**Main Flow:**

The planning CT image set, RT Structure Set, RT Plan and RT Dose are retrieved by the Dose Displayer, which shows the given information to the user.

**Post-conditions:**

None.

660

## 3.5 BRTO II Security Considerations

There are no explicit security considerations in this profile.

## 3.6 BRTO II Cross Profile Considerations

Segmentation requirements of this profile are expected to be referenced by other profiles.

665 **4 Multimodality Image Registration for Radiation Oncology (MMRO-III) Profile**

670 This Integration Profile specifies how images, RT Structure Sets, RT Doses, and associated spatial registration information can be exchanged, stored, processed and displayed. For a display workstation, it is essential that a workstation correctly identifies the corresponding image sets, matches data from single-slice and multi-slice datasets, matches coordinate systems, and performs spatial translations. The use of relevant DICOM objects (Spatial Registration) is clarified and constrained in order to avoid misinterpretation.

675 The Multimodality Image Registration for Radiation Oncology (MMRO-III) Profile focuses on content for image registration and does not define a registration workflow. Such workflow could be managed by using mechanisms described in the Post-Acquisition Workflow Integration Profile (see RAD TF-1: 12).

The MMRO-III Profile currently only handles rigid registration. Deformable registration will be addressed in a separate Profile in the future.

680 The MMRO-III Profile does not specify the use of quantification methods for the image data that are created or displayed. In particular, interoperability for PET Standard Uptake Values (SUV) is considered a relevant future work item for IHE. Note that vendors may wish to provide SUV capability even though not required under this Profile.

The MMRO-III Profile has implicit limitations imposed by its dependency on the IHE-RO BRTO-II Profile. The most significant of these are listed here:

- 685
- Only the following patient orientations {HFS, HFP, FFS, FFP} shall be considered to be within the scope of this profile. Actors participating in this profile may be capable of handling additional orientations (decubitus), but such orientations will not be tested with this profile.

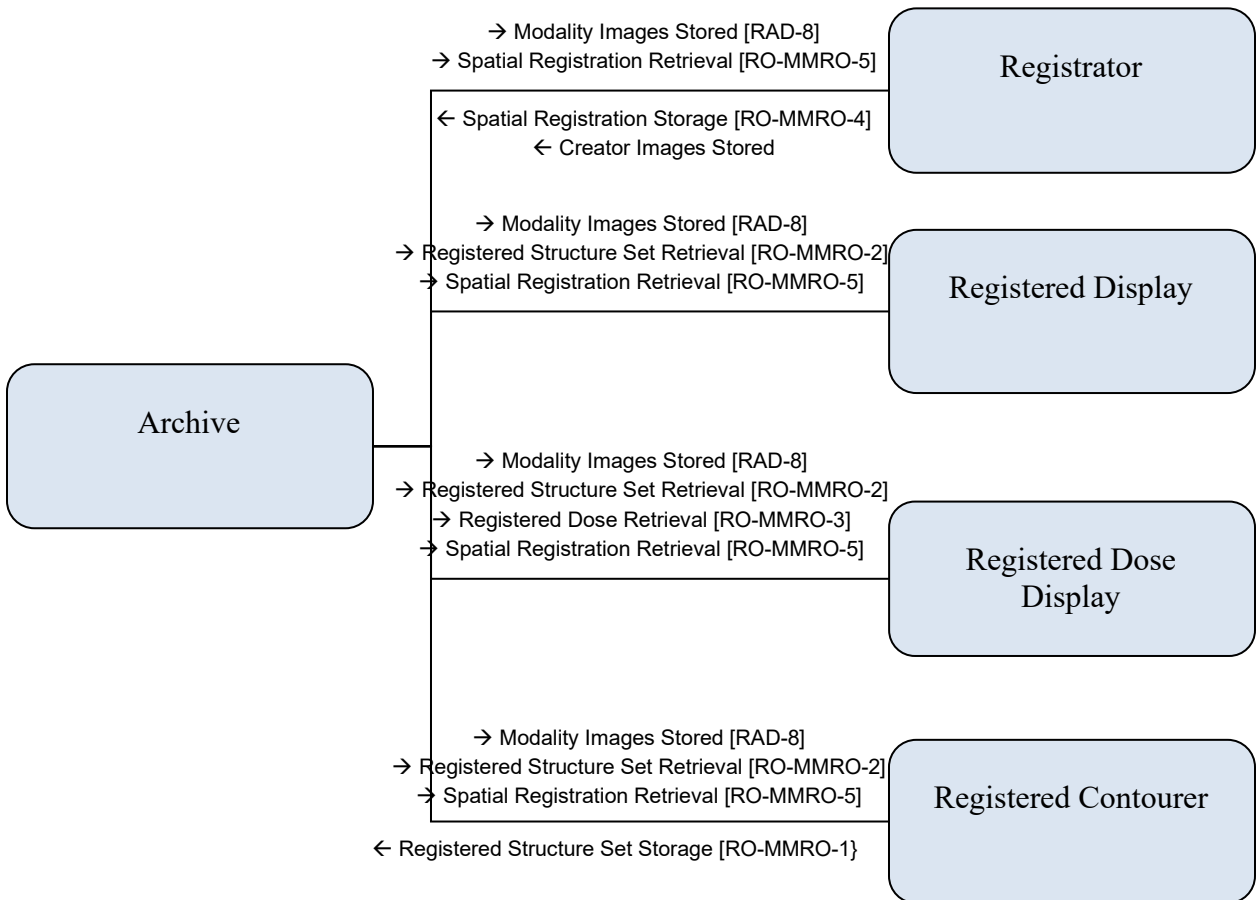
690 The primary image set shall be of modality CT or MR. The image orientation of the “primary” shall be transversal. The “secondary” image set shall be a rectilinear, not skewed, not sheared image set of modality CT, MR or PET. Their image orientation shall be one of the cardinal planes +/-30°. Other image orientations are out of scope of this profile.

RT Dose shall be in the Registered Frame of Reference, e.g., in the same Frame of Reference as its referenced image set.

695 **4.1 Actors / Transactions**

Figure 4.1-1 shows the actors directly involved in the MMRO-III Profile and the relevant transactions between them. If needed for context, other actors that may be indirectly involved due to their participation in other related profiles are shown in dotted lines. Actors which have a mandatory grouping are shown in conjoined boxes.

700 This profile uses the MMRO Registered Contourer Actor, which must be compatible with RT Structure Set objects created by the BRTO-II Profile Contourer Actor.



**Figure 4.1-1: MMRO-III Actor Diagram**

705 Table 4.1-1 lists the transactions for each actor directly involved in the MMRO-III Profile. In order to claim support of this profile, an implementation of an actor must perform the required transactions (labeled “R”) and may support the optional transactions (labeled “O”). Actor groupings are further described in Section 4.3.

710

715

**Table 4.1-1: MMRO-III Profile – Actors and Transactions**

<b>Actors</b>	<b>Transactions</b>	<b>Optionality</b>	<b>Section in Vol. 2</b>
<b>Archive</b>	Modality Images Stored	R	RAD 4.8
	Creator Images Stored	R	RAD 4.18
	Registered Structure Set Storage	R	MMRO-3
	Spatial Registration-III Storage	R	MMRO-III-1
	Spatial Registration-III Retrieval	R	MMRO-III-2
	Registered Dose Retrieval	R	MMRO-5
	Registered Structure Set Retrieval	R	MMRO-4
<b>Registrar</b>	Modality Images Stored	R	RAD 4.8
	Creator Images Stored	O	RAD 4.18
	Spatial Registration-III Retrieval	O	MMRO-III-2
	Spatial Registration-III Storage	R	MMRO-III-1
<b>Registered Contourer</b>	Modality Images Stored	R	RAD 4.8
	Registered Structure Set Storage	R	MMRO-3
	Registered Structure Set Retrieval	R	MMRO-4
	Spatial Registration-III Retrieval	R	MMRO-III-2
<b>Registered Display</b>	Modality Images Stored	R	RAD 4.8
	Registered Structure Set Retrieval	R	MMRO-4
	Spatial Registration-III Retrieval	R	MMRO-III-2
<b>Registered Dose Display</b>	Modality Images Stored	R	RAD 4.8
	Registered Structure Set Retrieval	R	MMRO-4
	Registered Dose Retrieval	R	MMRO-5
	Spatial Registration-III Retrieval	R	MMRO-III-2

#### 4.1.1 Actor Descriptions and Actor Profile Requirements

No special requirements.

720 **4.2 MMRO-III Actor Options**

Options that may be selected for this profile are listed in Table 4.2-1 along with the actors to which they apply. Dependencies between options when applicable are specified in notes.

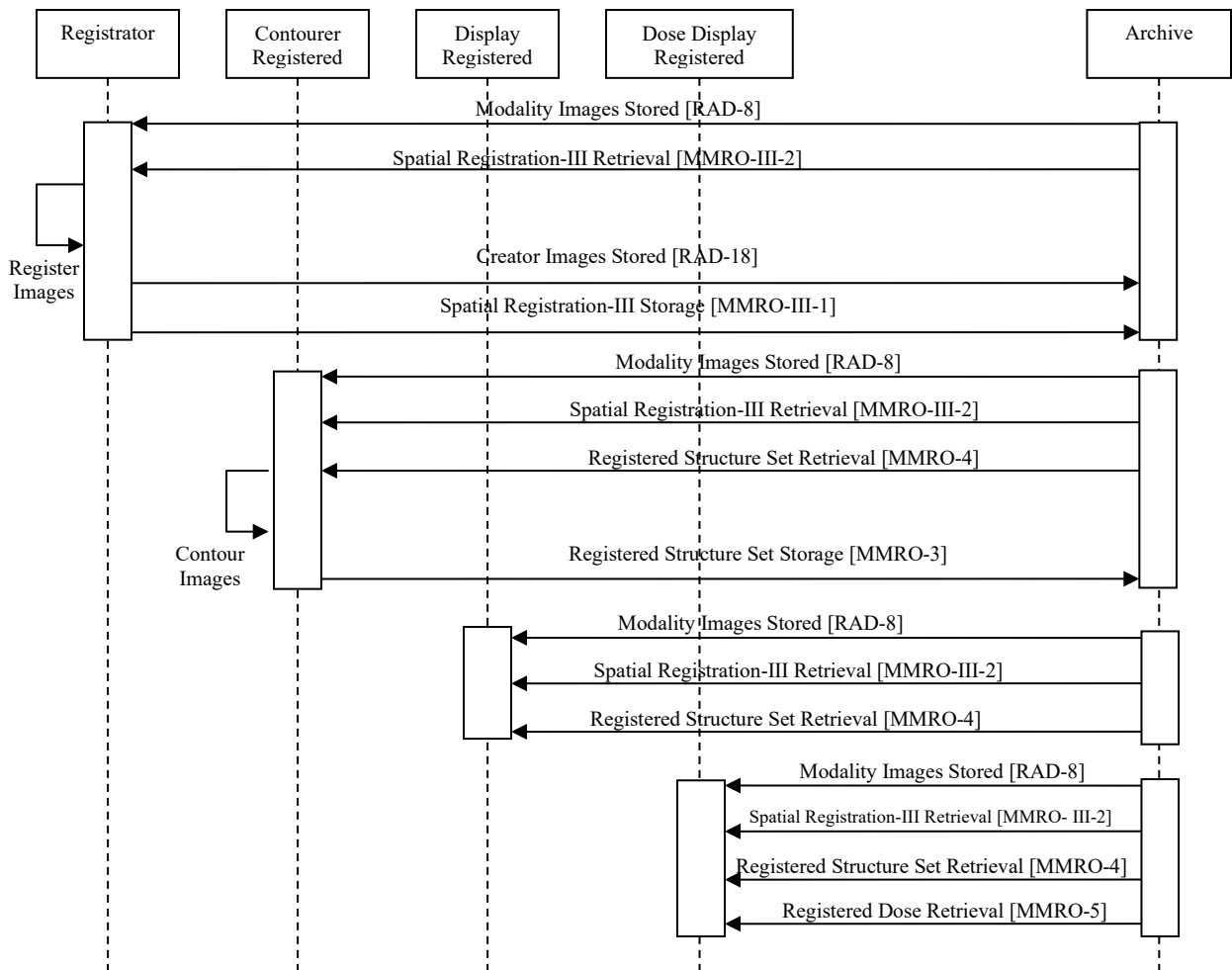
**Table 4.2-1: MMRO-III - Actors and Options**

<b>Actor</b>	<b>Options</b>	<b>Volume &amp; Section</b>
Archive	<i>No options defined</i>	--
Registrator	Creator Images Stored	RAD 4.18
	Spatial Registration-III Retrieval	MMRO-III-2
Registered Contourer	<i>No options defined</i>	--
Registered Display	<i>No options defined</i>	--
Registered Dose Display	<i>No options defined</i>	--

725 **4.3 MMRO-III Actor Required Groupings**

None.

**4.4 MMRO-III Overview**



**Figure 4.4-1: Overall Process Flow in MMRO Profile**

730 **4.4.1 Concepts**

**4.4.1.1 Creating Datasets**

The MMRO-III Profile applies to many types of data. Although each type may need to be handled differently, fused display is possible with each type.

735 The image sets will usually be created by Acquisition Modality Actors, however in some scenarios the image sets could be the result of post-processing by a Registrator Actor.

This profile only addresses the registration of volumetric datasets, RT Structure Set and RT Dose objects.

740 Volumetric datasets refer to a collection of planar images which span a volume and each image has a defined location in space. Typical examples include a set of CT transverse slices, MR slice stacks and PET transaxial images. In the “easiest” situation, multiple volumetric datasets are created in the same Frame of Reference. Datasets with the same Frame of Reference value are inherently registered and so a registration step is not strictly necessary.

A shared Frame of Reference may be the result of:

- A hybrid scanner such as a PET/CT being used to image the patient.
- 745 • A positioning system, such as a fixed head frame, being used to position the patient at the same location and orientation each time for imaging.
- A single scanner being used to image the patient at several closely spaced time intervals (e.g., gated cardiac or pulmonary imaging).
- 750 • A second image set being created by a post-processing step (e.g., tissue enhancement or tumor segmentation) and inheriting the Frame of Reference of the first image set.

Note that image sets with a shared Frame of Reference UID implies they are in the same reference coordinate system but does not guarantee that they overlap. For example, a pelvis series and a head series from the same MR scan may share a Frame of Reference.

More typically, volumetric datasets are each created with a unique Frame Of Reference.

755 Different Frames of Reference may be the result of:

- Different equipment being used to image the patient
- The same piece of equipment being used to image the patient at different times
- Different patients/subjects being imaged (as in a comparative study or when patient images are mapped to an atlas for display or analysis)

#### 760 **4.4.1.2 Registering Datasets**

To perform registration when datasets do not share a Frame of Reference, it is necessary to define a relationship between them. Even if two datasets do share a Frame of Reference, for example on the basis of assuming no patient motion, or assuming two acquisition systems are perfectly calibrated, it is sometimes still useful to perform a registration based on fiducials, image content or something else.

765

Once the registration is complete, the resulting transformation is recorded in a Spatial Registration object which is typically stored in the study with the image data. The DICOM Spatial Registration object supports rigid registrations (translation and rotation).. The “primary” image data set is the one that shares the same Frame of Reference as the Spatial Registration Object and shall have an identity transformation matrix. Spatial Registration objects will usually be created by Registrator Actors; however, in some situations a registration object will not be strictly required (if the datasets share the same Frame of Reference).

770

775 There are many methods/algorithms for registration: matching fiducials that are visible in the datasets, using operator input to help align the data, correlating the information content in the datasets, etc. Specifying a method/algorithm to use to arrive at the transformation is outside the scope of this profile. The specific method/algorithm used may be of interest to the user (especially when several different registrations exist between the same datasets) so it is recommended that the name and description of the method be recorded in the resulting Spatial Registration Object.

780 If the application wishes to allow registration of more than 2 volumetric datasets it shall produce multiple Spatial Registration objects. The first Spatial Registration Object shall establish the Registered Frame of Reference for all of the Spatial Registration Objects. Subsequent objects shall transform a single volumetric dataset into the Registered Frame of Reference.

785 In some cases, it is conceivable that a Registrar may combine existing registration information without performing a registration process. For example, if a registration exists to map dataset A into Frame of Reference C and another registration exists to map dataset B into Frame of Reference C, the Registrar could use those transforms to produce a new set of Spatial Registration Objects for dataset A and B which transform into a Registered Frame of Reference.

790 When registering volumetric datasets, the mapping describes the spatial transformation between Frames of Reference. Since the specific images exist in one of those Frames of Reference, they can be mapped to each other.

This profile does not address registering datasets which share a common Frame of Reference. If the application wishes to provide this functionality it should store one or both of the datasets with a new Frame of Reference UID and allow the user to perform the registration with those datasets.  
795 This avoids the need to define a non-unity transform from a Frame of Reference to itself. This capability is not required to satisfy this profile.

Identifying and obtaining an appropriate matching pair of datasets to register is necessary but is not defined by this profile. IHE ensures that some useful query parameters are available, but in the end this task is left to the implementer.

#### 800 **4.4.1.3 Resampling Datasets**

After a Spatial Registration has been applied, the data in the two datasets is in the same coordinate system, but may still have different pixel resolution, pixel spacing, slice thickness, number of slices, slice positions or even slice orientations. Before display is possible, it is necessary to resample the registered dataset into the Registered Frame of Reference. Also, the  
805 Image Orientation and Patient Position of the resampled dataset shall match that of the Base dataset.

Note that when resampling values, such as NM and PET counts, that are not normalized to the volume represented by the pixel, the resampled pixel value may be quite different from the original pixel value. For example, when creating a new image with twice the number of pixels in the X and Y directions, 1 pixel in the original data is now 4 pixels in the resampled data, and the  
810 value of each of the new pixels would be expected to be roughly  $\frac{1}{4}$  of the value of the original pixel. When resampling values that are not directly linked to the area/volume of the pixel (such

as Hounsfield units), the new pixels will have values similar to the original pixel (partial volume effects notwithstanding).

815 The exact values produced by resampling also depends on the interpolation algorithm used. The specification of such algorithms is outside the scope of this profile.

In the Radiotherapy domain there will also be instances of RT Structure Set and RT Dose objects which exist in the same Frame of Reference as one of the datasets being registered. The structures described as contours in the RT Structure Sets will be subject to resampling prior to display. The resampling of the contours depends on the resampling algorithm used and is outside the scope of this profile.

Resampling of RT Dose objects is not supported within this profile.

825 The Registered Display Actor is required to be able to perform any resampling needed for the display. Some Modalities or Registrators may choose to generate resampled datasets. The advantage is that such datasets might be useful to non-registration aware display stations, and even when provided to IHE Registered Display Actors, might conceivably provide improved display performance. In most cases, however, storing the resampled data will significantly increase bandwidth and storage costs. This capability is not required to satisfy this profile.

830 Note that the stepping interval when scrolling through slices may be of primary importance to users and care should be taken in that respect. Sometimes the user may wish to step in increments of the original slices of the underlying set, and sometimes in the increments of the original slice or pixel spacing of the superimposed data set.

#### **4.4.1.4 Presenting Registered Datasets**

Presentation of the Registered Datasets is performed by the Registered Display Actor.

835 No DICOM Query transaction for Spatial Registration objects exists currently. For the purpose of this profile, it will be assumed that the registered images and the required Spatial Registration objects will be made available to the Registered Display Actor. The data will be transferred via C-STORE operations, but the initiation of the action is out of band for this profile.

840 The Registered Display transforms the datasets by applying the spatial registrations according to the DICOM specification and resamples the datasets as necessary for display.

845 Simple registered display could involve presentation of a single frame at a time. For some clinical interpretation tasks, presentation of a registered MPR (Multi Planar Reconstructed) view is considered essential. Many users will also expect to be able to change the transparency of the fusion overlay (blending factor), the color map for the overlay, the Window Width/Level for each data set, and other display parameters. For PET data, controls for upper & lower Window Level are valuable.

#### **4.4.1.5 Spatial Registrations and Frame of Reference**

850 This profile requires the Spatial Registration object not only to contain the Frame of References that are registered, but also registered instances (e.g., images). This is required for safety when registering two frames of references without further capability of verification. As an example, there are scanners that acquire two sequential image series, both with the same Frame of

Reference. If the patient moves between image acquisitions, there will exist two image series with the same Frame of Reference, but spatially inconsistent image information.

855 Applications are required to warn users if they receive Spatial Registration objects without image references. Similarly, warnings should occur if the displayed image sets include images not explicitly listed in the Spatial Registration objects.

#### **4.4.1.6 Well-known Frame of Reference**

This profile defines the content and usage of Registrations between image series. Registering image series to a Well-known Frame of Reference is possible, but out of scope of this profile.

860 Note that when registering multiple image series to a Well-known FOR, ambiguities may occur due to the transitive nature.

### **4.4.2 Use Cases**

#### **4.4.2.1 Use Case #1: Multimodality Contouring**

865 Two or more series of images, for example, CT, MR and PET, are acquired and stored to an archive system. The images, potentially with different Frames of Reference, are read in, registered, and then used for identifying volumes of interest (VOI) which are stored using an RT Structure Set object.

##### **4.4.2.1.1 Multimodality Contouring Use Case Description**

- 870 • Two or more series of images, for example a CT, MR and PET series, are acquired and reconstructed on multiple different Acquisition Modalities.
- The image sets, each with a different Frame of Reference, are stored to the Archive.
- 875 • Contrary to prior definitions of this profile, the actors defined here do not require establishing a Registered Frame of Reference which is the Frame of Reference of a CT image series. For example: to describe the registration of all 3 image sets, 2 Spatial Registration objects will be required. The first may register the CT to the MR, and the second may register the PET to the MR. A Registrator shall be able to accept any combination of Spatial Registration objects and may then internally re-organize the registrations. Any registrations created by a Registrator shall reflect the registrations that were actually performed by the user.
- 880 • A Registered Contourer Actor receives the image sets and Spatial Registrations and creates an RT Structure Set in the same Frame of Reference as one of the datasets. If the image sets are a superset of the images listed in the Spatial Registration IOD, the application shall warn the user of the use of potentially non-registered images. Each dataset may have a RT Structure Set created in its Frame of Reference.
- 885 Note that in case structures are resampled from one image set to another, it is currently not possible to indicate where the structures originated.
- The Registered Contourer will store the RT Structure Set(s) to the Archive.



Reference). This also applies to RT objects, such as RT Structure Set and RT Dose objects, as they will share a common Frame of Reference with an image set.

#### 4.4.2.2.1 Shared Frame of Reference Use Case Description

- 905 • Two series of images, for example a PET series and a CT series, are acquired and reconstructed on a single hybrid system.
- The image sets, each with the same Frame of Reference, are stored to the Archive. A common Frame of Reference implies that the two image sets are already in the same coordinate system and no transformation is required.
- 910 • A Registered Contourer retrieves the image sets and creates RT Structure Sets in the same Frame of Reference as the image sets. Each RT Structure Set shall reference only a single image set. If structures are defined for both image sets, two RT Structure Set instances will be created.
- The Registered Contourer will store the RT Structure Set(s) to the Archive.
- 915 • However, if the patient moves between scans, the shared Frame of Reference does not correctly identify that related pixel information of the separate image datasets are in the same spatial location. Verification and /or an additional registration step is recommended to verify/ensure the correct relation. See also Sections 4.5.1.2 and 4.5.1.5.
- A Registered Display is sent the image sets and RT Structure Set(s) and observes that no Spatial Registration object is referenced. It also observes that the two image sets and the RT Structure Set share the same Frame of Reference.
- 920 • The Registered Display re-samples the image sets, if necessary to match resolutions for display. No spatial registration transformation is required.
- The appearance of the fused display is out of band for this profile.

#### 4.4.2.2.2 Shared Frame of Reference Process Flow



925

**Figure 4.4.2.2-1: Process Flow for Shared Frame of Reference Use Case**

#### 4.4.2.3 Use Case #3: Multimodality Dose Display

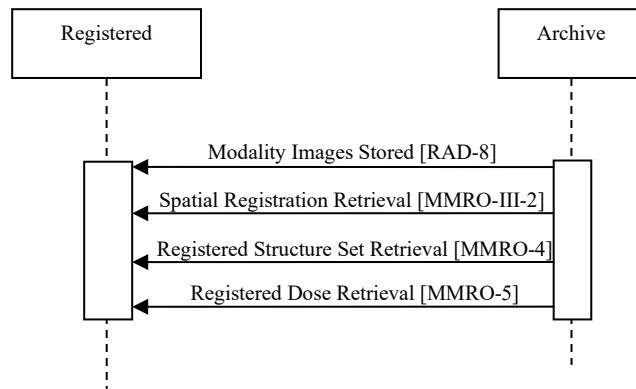
Two or more series of images, for example, CT, MR and PET, are acquired and stored to an archive system. The images, potentially with different Frames of Reference, are read in, registered, and then used for identifying volumes of interest (VOI) which are stored using an RT Structure Set object. An RT Dose object is created (out of band) utilizing the information and stored in the Frame of Reference of one of the image sets.

930

##### 4.4.2.3.1 Multimodality Dose Display Use Case Description

- 935 • Two or more series of images, for example a CT, MR and PET series, are acquired and reconstructed on multiple different Acquisition Modalities.
- The image sets, each with a different Frame of Reference, are stored to the Archive.
- A treatment plan is created from the image sets, along with RT Structure Sets, an RT Dosimetric Plan, and an RT Dose object.
- 940 • A Registered Dose Display is sent the image sets, RT Structure Set(s) and RT Dose along with the required Spatial Registrations.
- The Registered Dose Display re-samples the image sets, RT Structure Sets, and RT Dose as needed for appropriate display.
- The appearance of the fused display is out of band for this profile.

#### 4.4.2.3.2 Multimodality Dose Display Process Flow



945

**Figure 4.4.2.3.2-1: Process Flow for Multimodality Dose Display Use Case**

#### 4.5 MMRO-III Security Considerations

No specific considerations.

#### 4.6 MMRO-III Cross Profile Considerations

950

No specific considerations.

## **5 Treatment Planning – Plan Content Integration (TPPC) Profile**

955 This integration profile involves the exchange of RT Plan information between treatment planning systems and between treatment planning systems and treatment management systems. The emphasis for this profile is on reducing ambiguity involved in re-planning and incorporation of the planning information into the treatment management system in anticipation of transfer to a treatment delivery system. The transactions revolve around content rather than workflow.

960 This profile addresses a broad variety of “Beam Techniques” that exist in Radiation Therapy. Rather than define actors that had broad involvement in many optional transactions, a large number of actors were defined which have specific mandatory/required transactions and a small number of optional transactions related to beam modifiers. The actors are either producers or consumers of a DICOM RT Plan.

### **5.1 Actors / Transactions**

965 Figure 5.1-1 shows the actors directly involved in the TPPC Profile and the relevant transactions between them. If needed for context, other actors that may be indirectly involved due to their participation in other related profiles are shown in dotted lines. Actors which have a mandatory grouping are shown in conjoined boxes.

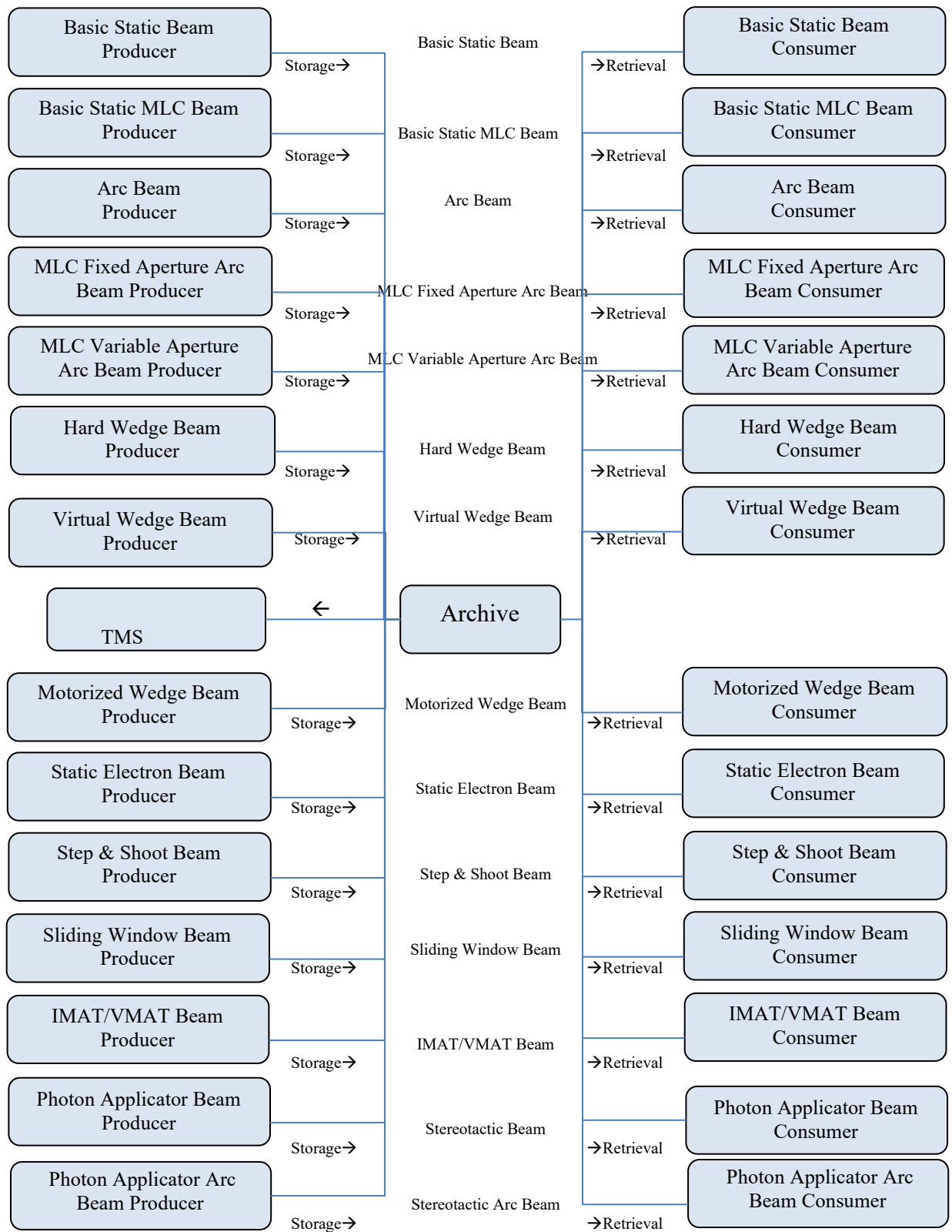


Figure 5.1-1: TPPC Actor Diagram

975 Table 5.1-1 lists the transactions for each actor directly involved in the TPPC Profile. In order to claim support of this profile, an implementation of an actor must perform the required transactions (labeled “R”) and may support the optional transactions (labeled “O”). Actor groupings are further described in Section 5.3.

**Table 5.1-1: TPPC Profile - Actors and Transactions**

Actors	Transactions	Optionality	Section in Vol. 2
Archive	Basic Static Beam Storage	R	TPPC-01
	Basic Static Beam Retrieval	R	TPPC-02
	Basic Static MLC Beam Storage	R	TPPC-03
	Basic Static MLC Beam Retrieval	R	TPPC-04
	Arc Beam Storage	R	TPPC-05
	Arc Beam Retrieval	R	TPPC-06
	MLC Fixed Aperture Arc Beam Storage	R	TPPC-07
	MLC Fixed Aperture Arc Beam Retrieval	R	TPPC-08
	MLC Variable Aperture Arc Beam Storage	R	TPPC-09
	MLC Variable Aperture Arc Beam Retrieval	R	TPPC-10
	Hard Wedge Beam Storage	R	TPPC-11
	Hard Wedge Beam Retrieval	R	TPPC-12
	Virtual Wedge Beam Storage	R	TPPC-13
	Virtual Wedge Beam Retrieval	R	TPPC-14
	Motorized Wedge Beam Storage	R	TPPC-15
	Motorized Wedge Beam Retrieval	R	TPPC-16
	Static Electron Beam Storage	R	TPPC-17
	Static Electron Beam Retrieval	R	TPPC-18
	Step & Shoot Beam Storage	R	TPPC-19
	Step & Shoot Beam Retrieval	R	TPPC-20
	Sliding Window Beam Storage	R	TPPC-21
	Sliding Window Beam Retrieval	R	TPPC-22
	IMAT/VMAT Beam Storage	R	TPPC-23
	IMAT/VMAT Beam Retrieval	R	TPPC-24
	Photon Applicator Beam Storage	R	TPPC-25
	Photon Applicator Beam Retrieval	R	TPPC-26
	Photon Applicator Arc Beam Storage	R	TPPC-27
	Photon Applicator Arc Beam Retrieval	R	TPPC-28
Treatment Management System (TMS)	Basic Static Beam Retrieval	O	TPPC-02
	Basic Static MLC Beam Retrieval	O	TPPC-04

<b>Actors</b>	<b>Transactions</b>	<b>Optionality</b>	<b>Section in Vol. 2</b>
(See Note Below)	Arc Beam Retrieval	O	TPPC-06
	MLC Fixed Aperture Arc Beam Retrieval	O	TPPC-08
	MLC Variable Aperture Arc Beam Retrieval	O	TPPC-10
	Hard Wedge Beam Retrieval	O	TPPC-12
	Virtual Wedge Beam Retrieval	O	TPPC-14
	Motorized Wedge Beam Retrieval	O	TPPC-16
	Static Electron Beam Retrieval	O	TPPC-18
	Step & Shoot Beam Retrieval	O	TPPC-20
	Sliding Window Beam Retrieval	O	TPPC-22
	IMAT/VMAT Beam Retrieval	O	TPPC-24
	Photon Applicator Beam Retrieval	O	TPPC-26
	Photon Applicator Arc Beam Retrieval	O	TPPC-26
Basic Static Beam Producer	Basic Static Beam Storage	R	TPPC-01
Basic Static Beam Consumer	Basic Static Beam Retrieval	R	TPPC-02
Basic Static MLC Beam Producer	Basic Static MLC Beam Storage	R	TPPC-03
Basic Static MLC Beam Consumer	Basic Static MLC Beam Retrieval	R	TPPC-04
Arc Beam Producer	Arc Beam Storage	R	TPPC-05
Arc Beam Consumer	Arc Beam Retrieval	R	TPPC-06
MLC Fixed Aperture Arc Beam Producer	MLC Fixed Aperture Arc Beam Storage	R	TPPC-07
MLC Fixed Aperture Arc Beam Consumer	MLC Fixed Aperture Arc Beam Retrieval	R	TPPC-08
MLC Variable Aperture Arc Beam Producer	MLC Variable Aperture Arc Beam Storage	R	TPPC-09
MLC Variable Aperture Arc Beam Consumer	MLC Variable Aperture Arc Beam Retrieval	R	TPPC-10
Hard Wedge Beam Producer	Hard Wedge Beam Storage	R	TPPC-11
Hard Wedge Beam Consumer	Hard Wedge Beam Retrieval	R	TPPC-12
Virtual Wedge Beam Producer	Virtual Wedge Beam Storage	R	TPPC-13
Virtual Wedge Beam Consumer	Virtual Wedge Beam Retrieval	R	TPPC-14
Motorized Wedge Beam Producer	Motorized Wedge Beam Storage	R	TPPC-15
Motorized Wedge Beam Consumer	Motorized Wedge Beam Retrieval	R	TPPC-16
Static Electron Beam Producer	Static Electron Beam Storage	R	TPPC-17
Static Electron Beam Consumer	Static Electron Beam Retrieval	R	TPPC-18
Step & Shoot Beam Producer	Step & Shoot Beam Storage	R	TPPC-19
Step & Shoot Beam Consumer	Step & Shoot Beam Retrieval	R	TPPC-20
Sliding Window Beam Producer	Sliding Window Beam Storage	R	TPPC-21
Sliding Window Beam Consumer	Sliding Window Beam Retrieval	R	TPPC-22
IMAT/VMAT Beam Producer	IMAT/VMAT Beam Storage	R	TPPC-23

Actors	Transactions	Optionality	Section in Vol. 2
IMAT/VMAT Beam Consumer	IMAT/VMAT Beam Retrieval	R	TPPC-24
Photon Applicator Beam Producer	Stereotactic Beam Storage	R	TPPC-25
Photon Applicator Beam Consumer	Stereotactic Beam Retrieval	R	TPPC-26
Photon Applicator Arc Beam Producer	Stereotactic Arc Beam Storage	R	TPPC-27
Photon Applicator Arc Beam Consumer	Stereotactic Arc Beam Retrieval	R	TPPC-28

Note: The TMS Integration Statement will indicate which transactions it is capable of supporting. In general, these will be grouped according to the overall functionality of the TMS Actor. For example, a general TMS would likely support all 14 transactions, while a Radiosurgery TMS may only support the Stereotactic-oriented beams. In addition, for cases where there are insufficient actors for complete testing of the TMS, the TMS can pass the Connectathon by claiming those transactions it successfully completed.

980

### 5.1.1 Actor Descriptions and Actor Profile Requirements

Normative requirements are typically documented in Volume 2 (Transactions) and Volume 3 (Content Modules). Some Integration Profiles, however, contain requirements which link transactions, data, and/or behavior. Those profile requirements are documented in this section as normative requirements (“shall”).

985

### 5.2 TPPC Transaction Options

Options that may be selected for this profile are listed in the Table 5.2-1 along with the transactions to which they apply. In Table 5.1-1, each \* Beam Producer has exactly one transaction, \* Beam Storage. Similarly, each \* Beam Consumer has exactly one transaction, \* Beam Retrieval. For each of these, there are additional content options as noted in Table 5.2-1 from the set of {Bolus, Block, Compensator, Hard Wedge}. One or more of these content additions can be added to the base transaction based on the Integration Statement for the application. The Archive Actor must implement all options of all transactions. The TMS Actor must implement all options of all Retrieval transactions. Dependencies between options when applicable are specified in notes.

990

995

**Table 5.2-1: TPPC - Transaction Options**

Transactions	Options	Optionality	Section in Vol 2
Basic Static Beam Storage	Bolus Beam Modifier	O	3.19
	Block Beam Modifier	O	3.19
	Compensator Beam Modifier	O	3.19
Basic Static Beam Retrieval	Bolus Beam Modifier	O	3.20
	Block Beam Modifier	O	3.20
	Compensator Beam Modifier	O	3.20
Basic Static MLC Beam Storage	Bolus Beam Modifier	O	3.21
	Compensator Beam Modifier	O	3.21
Basic Static MLC Beam Retrieval	Bolus Beam Modifier	O	3.22
	Compensator Beam Modifier	O	3.22
Arc Beam Storage	Bolus Beam Modifier	O	3.23
	Block Beam Modifier	O	3.23
Arc Beam Retrieval	Bolus Beam Modifier	O	3.24
	Block Beam Modifier	O	3.24
MLC Fixed Aperture Arc Beam Storage	Bolus Beam Modifier	O	3.25
MLC Fixed Aperture Arc Beam Retrieval	Bolus Beam Modifier	O	3.26
MLC Variable Aperture Arc Beam Storage	Bolus Beam Modifier	O	3.27
	Block Beam Modifier	O	3.27
MLC Variable Aperture Arc Beam Retrieval	Bolus Beam Modifier	O	3.28
	Block Beam Modifier	O	3.28
Hard Wedge Beam Storage	Bolus Beam Modifier	O	3.29
	Block Beam Modifier	O	3.29
	Compensator Beam Modifier	O	3.29
Hard Wedge Beam Retrieval	Bolus Beam Modifier	O	3.30
	Block Beam Modifier	O	3.30
	Compensator Beam Modifier	O	3.30
Virtual Wedge Beam Storage	Bolus Beam Modifier	O	3.31
	Block Beam Modifier	O	3.31
	Compensator Beam Modifier	O	3.31
	Hard Wedge Beam Modifier	O	3.31
Virtual Wedge Beam Retrieval	Bolus Beam Modifier	O	3.32
	Block Beam Modifier	O	3.32
	Compensator Beam Modifier	O	3.32
	Hard Wedge Beam Modifier	O	3.32
Motorized Wedge Beam Storage	Bolus Beam Modifier	O	3.33
	Block Beam Modifier	O	3.33
	Compensator Beam Modifier	O	3.33
	Hard Wedge Beam Modifier	O	3.33

Transactions	Options	Optionality	Section in Vol 2
Motorized Wedge Beam Retrieval	Bolus Beam Modifier	O	3.34
	Block Beam Modifier	O	3.34
	Compensator Beam Modifier	O	3.34
	Hard Wedge Beam Modifier	O	3.34
Static Electron Beam Storage	Bolus Beam Modifier	O	3.35
	Block Beam Modifier	O	3.35
	Compensator Beam Modifier	O	3.35
Static Electron Beam Retrieval	Bolus Beam Modifier	O	3.36
	Block Beam Modifier	O	3.36
	Compensator Beam Modifier	O	3.36
Step & Shoot Beam Storage	Bolus Beam Modifier	O	3.37
	Block Beam Modifier	O	3.37
	Compensator Beam Modifier	O	3.37
	Hard Wedge Beam Modifier	O	3.37
Step & Shoot Beam Retrieval	Bolus Beam Modifier	O	3.38
	Block Beam Modifier	O	3.38
	Compensator Beam Modifier	O	3.38
	Hard Wedge Beam Modifier	O	3.38
Sliding Window Beam Storage	Bolus Beam Modifier	O	3.39
	Block Beam Modifier	O	3.39
	Compensator Beam Modifier	O	3.39
	Hard Wedge Beam Modifier	O	3.39
Sliding Window Beam Retrieval	Bolus Beam Modifier	O	3.40
	Block Beam Modifier	O	3.40
	Compensator Beam Modifier	O	3.40
	Hard Wedge Beam Modifier	O	3.40
IMAT/VMAT Beam Storage	Bolus Beam Modifier	O	3.41
IMAT/VMAT Beam Retrieval	Bolus Beam Modifier	O	3.42
Photon Applicator Beam Storage	Bolus Beam Modifier	O	3.43
Photon Applicator Beam Retrieval	Bolus Beam Modifier	O	3.44
Photon Applicator Arc Beam Storage	Bolus Beam Modifier	O	3.45
Photon Applicator Arc Beam Retrieval	Bolus Beam Modifier	O	3.46

1000

### 5.2.1 Producer / Consumer Transaction Groupings

1005 Although not within the scope of this profile, it is possible for a clinical application to produce a treatment plan using several beams, each of which is defined by a different **Beam Storage** transaction as defined in this profile. For Producers, it is clinically acceptable for them to create a treatment plan with beams satisfying any of the Producer transactions with which they claim adherence. For such cases, a Consumer Actor which also claims adherence to **Beam Retrieval** transactions encompassing the composited treatment plan may be able to receive such a plan containing a mixed transaction set of beams. However, if the Consumer Actor cannot accept a plan with such a mixed set of beams, it must be able to handle the rejection of the plan in a safe manner.

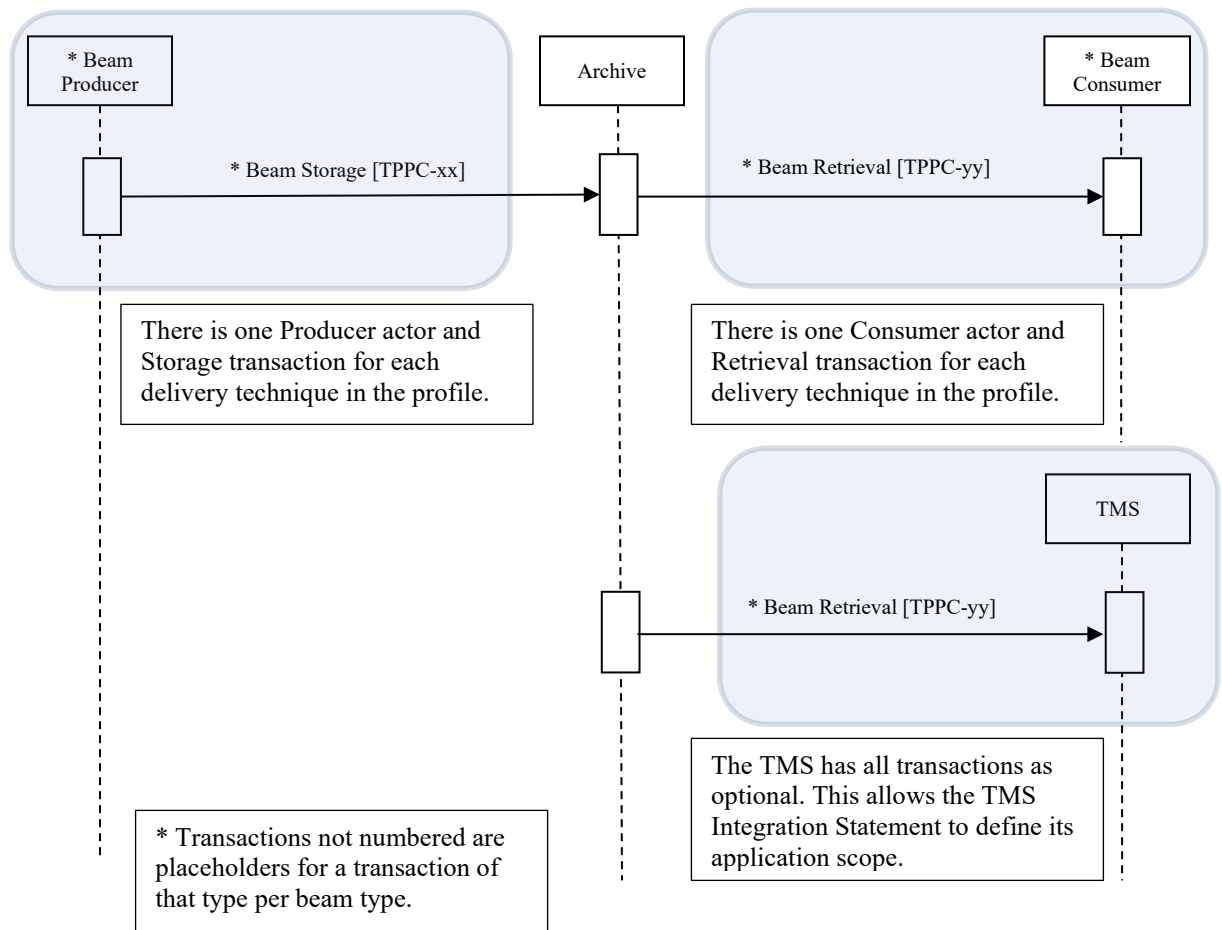
1010 Although an application may claim adherence to a set of transactions involving one or more Producer / Consumer pairs, the plan produced may not be deliverable by the equipment defined in a specific SOP instance created by a transaction. It is not required that all transactions defined in this profile are capable of being delivered by all delivery devices. As a result, there may be single transaction plans, or mixed transaction plans, that are not capable of being delivered by a given delivery device, even though it is defined as the delivery device in the treatment plan. The application user must be aware of the limitations of their delivery equipment, and should configure, where possible, their treatment planning systems and treatment management systems so that such incompatible plans cannot be created. Where such configuration is not possible, the application user should be aware of the limitations and recognize that such plans may fail to be accepted when transferred to the delivery equipment, which is responsible for handling such incompatible plans in a safe manner.

### 5.3 TPPC Actor Required Groupings

1025 None.

### 5.4 TPPC Overview

1030 This integration profile involves the exchange of RT Plan information between treatment planning systems and between treatment planning systems and treatment management systems. The emphasis for this profile is on reducing ambiguity involved in re-planning and incorporation of the planning information into the treatment management system in anticipation of transfer to a treatment delivery system.



1035

**Figure 5.4.1-1: Overall Process Flow in TPPC Profile**

### 5.4.1 Concepts

1040

This profile addresses a broad variety of “Beam Techniques” that exist in Radiation Therapy. Rather than define actors that have broad involvement in many optional transactions, a large number of actors were defined which each have specific mandatory/required transactions and a small number of optional transactions related to beam modifiers. The actors are either producers or consumers of a DICOM RT Plan.

1045

It is expected that the actual products commonly referred to as Treatment Planning Systems will implement one or more of the “producer” actors, and that the choice of which actors are implemented (for which adherence is claimed) will depend on the intended functionality (which is not defined by IHE-RO). A Treatment Planning System that is intended to be able to perform re-planning based on the output of another Treatment Planning System would be expected to adhere to one or more of the “consumer” actors.

It is expected that the actual products variously referred to as Oncology Information Systems, Oncology Information Management, or Electronic Medical Record for Oncology will implement

1050 the Treatment Management System (TMS) Actor. While the profile does not dictate the  
functionality of the TMS, the TMS is responsible for providing an adequate view of the  
information provided to it (as a Beam Consumer) such that, in normal operating practice, the  
appropriate user can ensure that the planning information has been properly consumed,  
1055 associated with the correct patient, etc. No transactions have been defined between the TMS  
Actor in this profile and the TMS Actor in other profiles, and any necessary interface is  
considered private (in the same way that an Image Manager and an Image Archive are related in  
the Radiology Domain Scheduled Workflow Profile). In practice, it is expected that once a TMS  
has consumed the information provided to it by a Beam Producer, the system incorporating the  
1060 TMS Actor will then be able to act as the TMS in delivery-oriented profiles and provide that  
information to a Treatment Delivery System Actor in that profile. It is not expected that a TMS  
Actor for this profile from one vendor will interoperate with a TMS Actor for other delivery  
profiles from another vendor. As indicated in the table identifying actors and transactions, the  
TMS Actor can support retrieval of any of the beam types (all transactions are optional). The  
1065 TMS shall indicate in its Integration Statement the scope of its capabilities (i.e., which beam  
types it supports). It is expected that a TMS will support most, if not all, beam types. However,  
there may be beam types for which full testing is not possible due to limitations on the number of  
producers of a specific beam type, hence the optional transaction list.

It should also be noted that chapter 7 in this Supplement's Volume 3 specifies content that is  
mandatory across all transactions.

1070 Finally, there are individual attributes within a RT Plan that are not specified in this profile but  
have significant safety implications if ignored. As much as possible, these attributes have been  
identified in the transactions, and it is indicated that a 'retrieval' actor shall handle RT Plans that  
may include these attributes in a safe manner. This behavior can include rejection of the RT Plan  
or appropriate warnings (with user acknowledgement) as possible courses of action in such  
1075 circumstances.

## 5.4.2 Use Cases

### 5.4.2.1 Use Case #1: Treatment Replanning

1080 A radiation oncology treatment planning system (TPS) creates and stores a treatment plan according to one of the techniques specified. A second TPS, requiring the initial plan in order to add/change information, retrieves the original treatment plan, modifies the plan, and then stores the modified treatment plan as a new plan to the archive.

#### 5.4.2.1.1 Treatment Re-planning Use Case Description

- 1085 • A TPS, through transactions not described in this profile (but similar to the IHE-RO Basic Radiation Therapy Objects Profile) acquires sufficient information to create a treatment plan according to one of the treatment techniques described in this profile.
- The treatment plan is stored to the archive.
- 1090 • A second TPS required the original treatment plan in order to modify it, will read in the original plan, perform modifications to the plan, and then save the modified plan as a new plan to the archive.

#### 5.4.2.1.2 Treatment Re-planning Process Flow

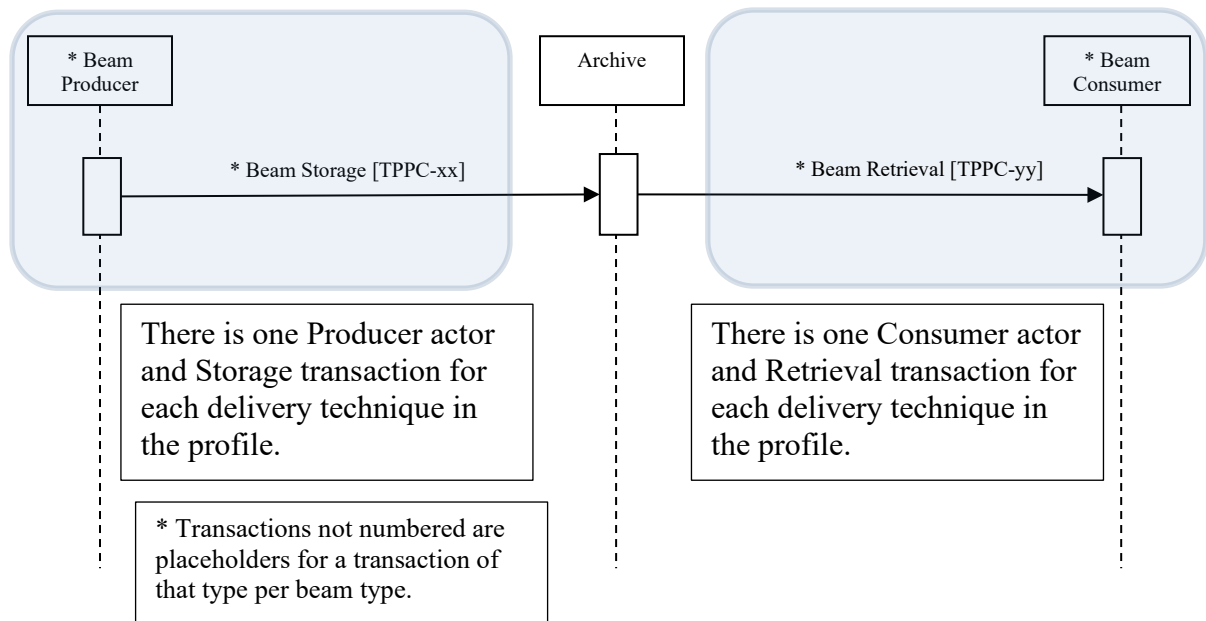


Figure 5.4.2.1.2-1: Process Flow for Treatment Re-planning Use Case

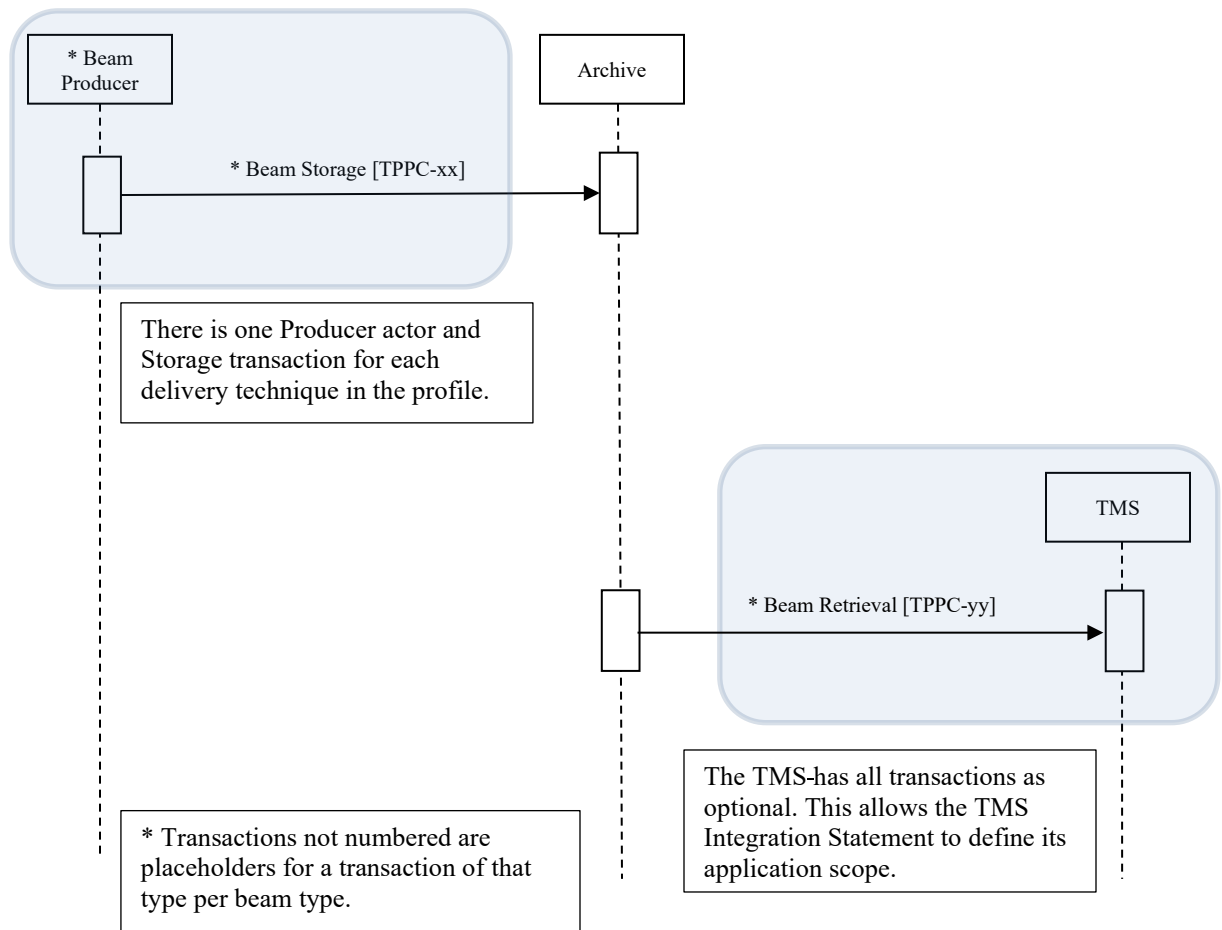
### 5.4.2.2 Use Case #2: TMS Upload

1095 A radiation oncology treatment planning system (TPS) creates and stores a treatment plan according to one of the techniques specified. The Treatment Management System (TMS) retrieves the treatment plan in order to process it for further use and potential delivery (not included in this profile).

**5.4.2.2.1 TMS Upload Use Case Description**

- 1100
- A TPS, through transactions not described in this profile (but similar to the IHE-RO Basic Radiation Therapy Objects Profile) acquires sufficient information to create a treatment plan according to one of the treatment techniques described in this profile.
  - The treatment plan is stored to the archive.
  - A TMS retrieves the plan from the archive.

1105 **5.4.2.2.2 TMS Upload Process Flow**



**Figure 5.4.2.2.2-1: Process Flow for TMS Upload Use Case**

**5.5 TPPC Security Considerations**

1110 Not Applicable

## **5.6 TPPC Cross Profile Considerations**

Not applicable

**6 Reserved**

1115 **7 Reserved**

**8 Reserved**

## 9 Treatment Delivery Workflow - II (TDW - II) Profile

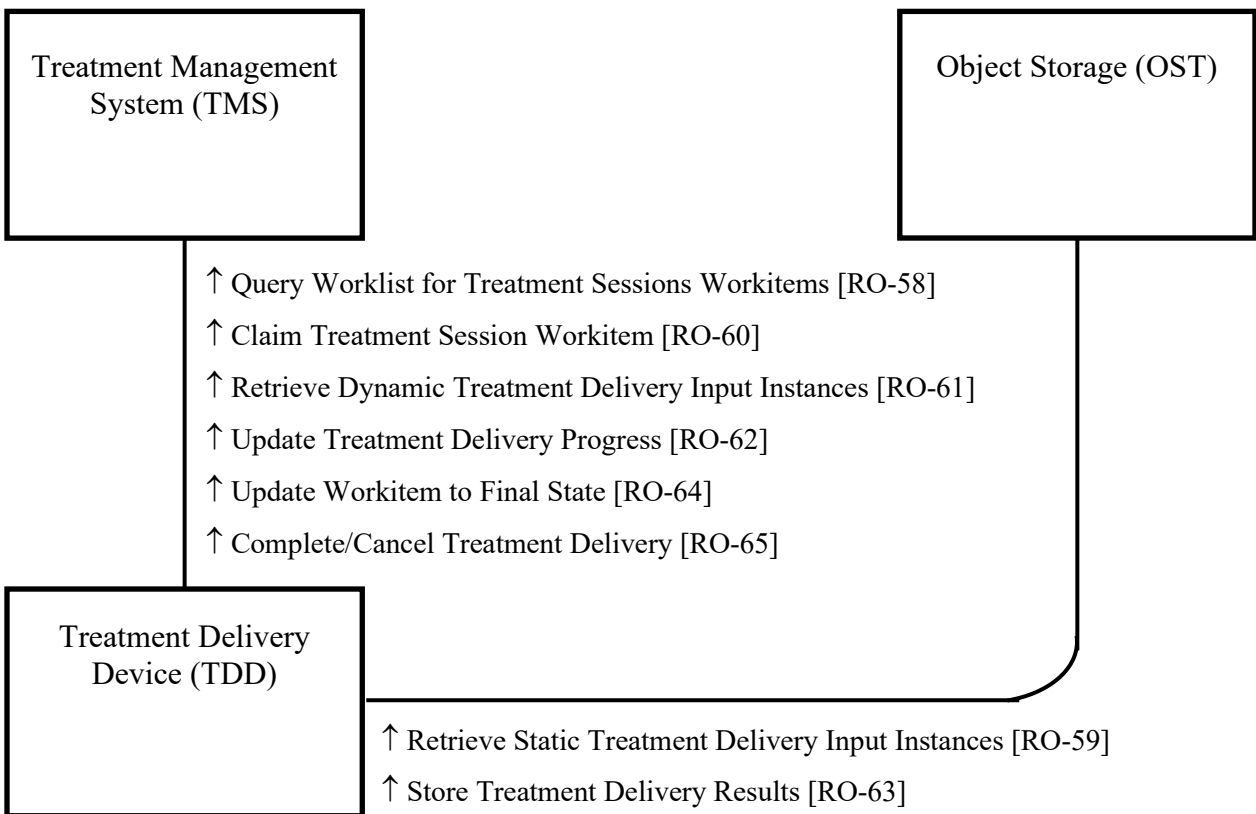
1120 The Treatment Delivery Workflow - II Integration Profile describes the necessary workflow  
between a Treatment Management System (TMS) and Treatment Delivery Device (TDD) for  
treatment delivery. This profile grew out of the Technical Committee's work on the Integrated  
Positioning and Delivery Workflow (IPDW) Integration Profile, which was found to specify too  
many required elements for some Treatment Delivery Devices. Several commercially available  
1125 delivery machines either do not handle positioning interactions at all or they are not exposed in  
significant or easily modifiable ways. This profile describes the workflow between the TMS and  
TDD in the context where the actors are only concerned with treatment delivery tasks.

This profile is a workflow profile.

### 9.1 TDW-II Actors, Transactions, and Content Modules

1130 This section defines the actors, transactions, and/or content modules in this profile. General  
definitions of actors are given in the Technical Frameworks General Introduction Appendix A.  
IHE Transactions can be found in the Technical Frameworks General Introduction Appendix B.  
Both appendices are located at [http://ihe.net/Technical\\_Frameworks/#GenIntro](http://ihe.net/Technical_Frameworks/#GenIntro).

1135 Figure 9.1-1 shows the actors directly involved in the TDW-II Profile and the relevant  
transactions between them. If needed for context, other actors that may be indirectly involved  
due to their participation in other related profiles are shown in dotted lines. Actors which have a  
required grouping are shown in conjoined boxes (see Section 9.3).



**Figure 9.1-1: TDW-II Actor Diagram**

1140 Table 9.1-1 lists the transactions for each actor directly involved in the TDW-II Profile. To claim compliance with this profile, an actor shall support all required transactions (labeled “R”) and may support the optional transactions (labeled “O”).

**Table 9.1-1: TDW-II Profile - Actors and Transactions**

Actors	Transactions	Initiator or Responder	Optionality	Reference
Treatment Management System	RO-58 Query Worklist for Treatment Sessions Workitems	Responder	R	RO TF-2: 3.58
	RO-60 Claim Treatment Session Workitem	Responder	R	RO TF-2: 3.60
	RO-61 Retrieve Dynamic Treatment Delivery Input Instances	Responder	R	RO TF-2: 3.61
	RO-62 Update Treatment Delivery Progress	Responder	R	RO TF-2: 3.62
	RO-64 Update Workitem to Final State	Responder	R	RO TF-2: 3.64
	RO-65 Complete/Cancel Treatment Delivery	Responder	R	RO TF-2: 3.65
	RO-58 Query Worklist for Treatment Sessions Workitems	Initiator	R	RO TF-2: 3.58

Actors	Transactions	Initiator or Responder	Optionality	Reference
Treatment Delivery Device	RO-59 Retrieve Static Treatment Delivery Input Instances	Initiator	R	RO TF-2: 3.59
	RO-60 Claim Treatment Session Workitem	Initiator	R	RO TF-2: 3.60
	RO-61 Retrieve Dynamic Treatment Delivery Input Instances	Initiator	R	RO TF-2: 3.61
	RO-62 Update Treatment Delivery Progress	Initiator	R	RO TF-2: 3.62
	RO-63 Store Treatment Delivery Results	Initiator	R	RO TF-2: 3.63
	RO-64 Update Workitem to Final State	Initiator	R	RO TF-2: 3.64
	RO-65 Complete/Cancel Treatment Delivery	Initiator	R	RO TF-2: 3.65
Object Storage	RO-59 Retrieve Static Treatment Delivery Input Instances	Responder	R	RO TF-2: 3.59
	RO-63 Store Treatment Delivery Results	Responder	R	RO TF-2: 3.63

## 1145 9.1.1 Actor Descriptions and Actor Profile Requirements

Most requirements are documented in RO TF-2 Transactions. This section documents any additional requirements on profile's actors.

### 9.1.1.1 Treatment Delivery Device (TDD)

1150 The TDD fetches treatment delivery information prepared by TMS for scheduled treatments and reports on delivery progress and results. The TDD may perform other functions than treatment delivery such as verification image acquisition, registration, and positioning, but is not required to do so. The TDD fulfills the role of a UPS-Pull 'Pull Performer' SCU as described in DICOM Standard Part 17.

### 9.1.1.2 Treatment Management System (TMS)

1155 The TMS is responsible for managing the treatment in the radiation oncology workflow and for scheduling radiotherapy activities. The TMS consumes beams information for use in treatment delivery from a treatment plan and treatment records. The TMS prepares treatment delivery information for scheduled treatments and receives reports on delivery progress and results. The TMS fulfills the role of a UPS-Pull 'Worklist Manager' SCP as described in DICOM Standard Part 17. Note that in this profile the system that fulfills the role of the TMS may also fulfill the role of an OST.

### 9.1.1.3 Object Storage (OST)

1165 The OST provides retrieval and storage of delivery information for scheduled and performed treatments. For retrieval, the UPS Input Information sequence specifies the AE title from which the performing actor is to retrieve the input objects from.

The location, from which each class of objects shall be retrieved from, is defined by and at the discretion of each vendor’s TMS implementation.

1170 The location, from which the RT Plan/RT Ion Plan SOP instances and Treatment Record SOP instances shall be retrieved from, is defined by and at the discretion of each vendor’s TMS implementation.

The location, where Treatment Record SOP instances are to be stored, is also defined by and at the discretion of each vendor’s TMS implementation.

## 9.2 TDW-II Actor Options

1175 Options that may be selected for each actor in this profile, if any, are listed in Table 9.2-1. Dependencies between options, when applicable, are specified in notes.

**Table 9.2-1: TDW-II – Actors and Options**

Actor	Option Name	Reference
Treatment Management System	Retain Original Treatment Records Option	RO TF-2: 3.58
Object Storage	Retain Original Treatment Records Option	RO TF-2: 3.63
Treatment Management System	Time Zone Support Option	RO TF-3: 7.5.2
Treatment Delivery Device	Time Zone Support Option	RO TF-3: 7.5.2

### 9.2.1 Retain Original Treatment Records Option

1180 This option allows a TDD to resume from a partial treatment when the TDD requires all attributes of all the original treatment records previously sent for a specific fraction in order to exactly determine how to continue the fraction.

1185 A *TMS* that supports this option shall include in the UPS Input Information Sequence all Treatment Record Instances matching original RT Beams Treatment Record Storage/RT Ion Beams Treatment Record Storage SOP instances which were stored by the TDD in the OST for previous deliveries of the corresponding fraction to be continued.

An *OST* that supports this option shall retain all information from the RT Beams Treatment Record Storage/RT Ion Beams Treatment Record Storage SOP instances received from TDD as described in the description of level 2 SCP conformance Storage Service Class (extended negotiation of the association supported storage level is not required).

1190 Note that, as a consequence, this option prevents the TMS to modify the RT Treatment Plan/RT Ion Treatment Plan between delivery sessions of a specific treatment fraction.

### 9.2.2 Time Zone Support Option

This option allows a TDD to query the treatment sessions worklist on a TMS that runs in a different time zone than the TDD.

1195 A TMS that supports this option shall match the requested timeslot against the scheduled information in the worklist using the time zone offset provided by the TDD. The profile does not

specify any requirements about the internal representation of datetime information on the TMS (e.g., UTC vs. local time of TMS vs. local time of TDD). The TMS has to make sure that requested timeslot and scheduled timeslot are matched in the same time zone.

1200 A *TDD* that supports this option shall include the local time zone offset it is operating in when requesting the treatment sessions worklist for a given (TDD local) time slot on the TMS.

The DICOM standard provides different means to encode time zone information in the C-FIND services. In the scope of this profile, the following shall apply:

- 1205
- Time zone query adjustment in the SOP Class Extended Negotiation shall not be negotiated.
  - Timezone Offset From UTC (0008,0201) shall not be present in the C-FIND request/response nor in the N-SET request.
  - Time zone information shall be directly included in DT attributes of the UPS in the C-FIND request/response and N-SET request as specified in 7.5.2.1.1.2 and 7.5.2.3.1.

1210 If “Time Zone Support” option is not supported, the *TMS* will:

- Ignore time zone information in the C-FIND request.
- Interpret DT attributes assuming local time zone (e.g., 4pm for a TDD actor in UTC+3 matches with 4pm for a TMS actor in UTC+1).

1215 A *TDD* that supports the “Time Zone Support” option shall annotate the local time zone offset, it is operating in, in the resulting treatment records. It shall follow the DICOM Standard, i.e.:

- For DA/TM attributes: Using Timezone Offset From UTC (0008,0201)
- For DT attributes: Using either Timezone Offset From UTC (0008,0201) or explicitly encode the time zone offset in the DT attribute

### 9.3 TDW-II Required Actor Groupings

1220 Not applicable.

## 9.4 TDW-II Overview

### 9.4.1 Concepts

1225 The Treatment Delivery Workflow II Integration Profile covers the delivery of a treatment session scheduled in a treatment management system and carried out by a treatment delivery device.

Driven by a worklist on the Treatment Management System (TMS), the Treatment Delivery Device (TDD) delivers the intended treatment. The TDD may optionally perform other unscheduled activities such as verification image acquisition, registration and positioning, but is not required to do so within the scope of this profile.

1230 **9.4.2 Use Cases**

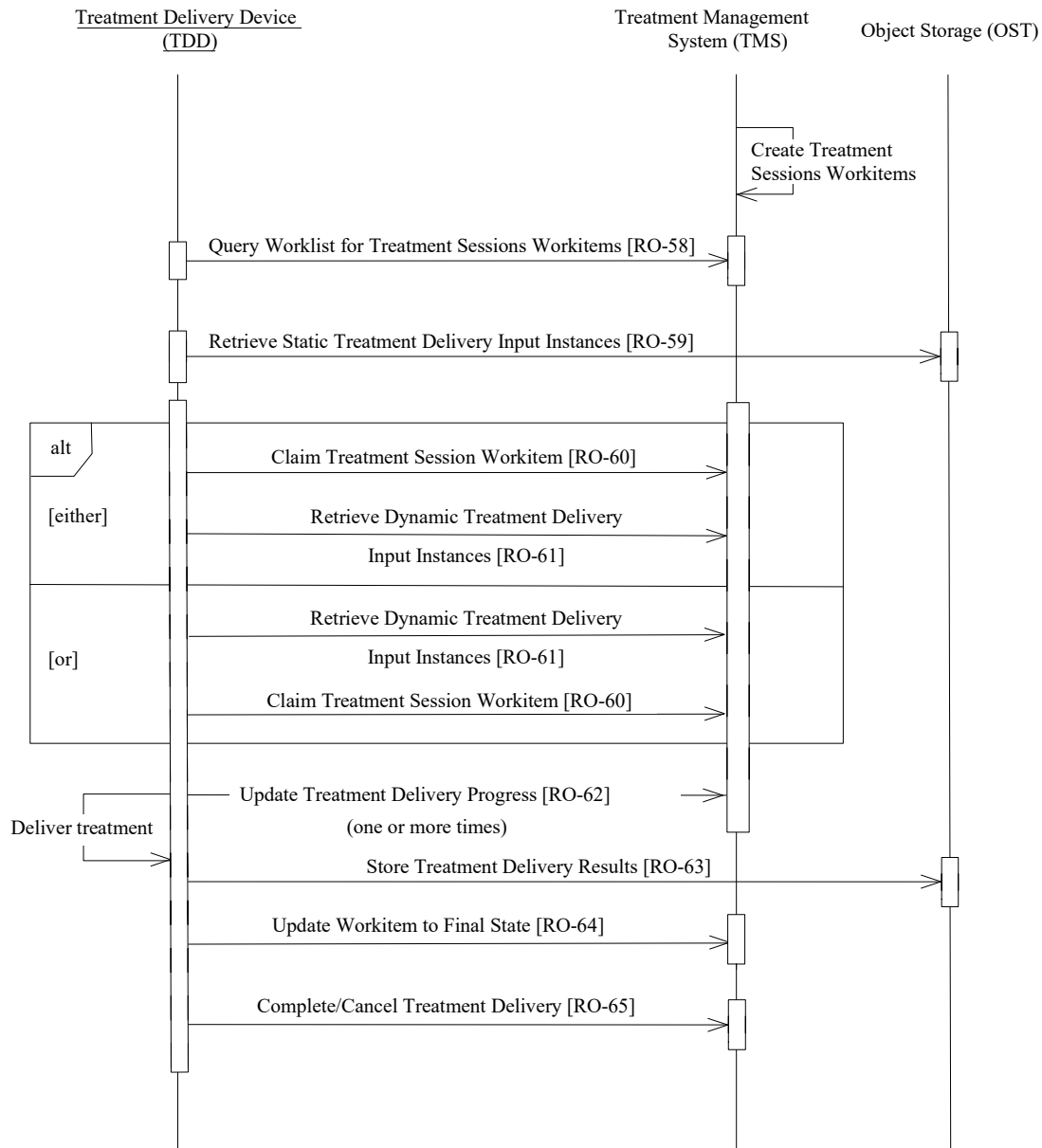
### **9.4.2.1 Use Case #1: Treatment Delivery Workflow**

#### **9.4.2.1.1 Treatment Delivery Workflow Use Case Description**

1235 The Treatment Delivery Workflow II Integration Profile describes the necessary workflow between a Treatment Management System (TMS) and Treatment Delivery Device (TDD) for treatment delivery. This profile addresses the use cases for TDDs, which handle imaging and positioning completely internally.

#### **9.4.2.1.2 Treatment Delivery Workflow Process Flow**

1240 The process flow for the Treatment Delivery Workflow II Integration Profile is shown in Figure 9.4.2.1.2-1.



**Figure 9.4.2.1.2-1: Basic Process Flow in TDW-II Profile**

In Figure 9.4.2.1.2-1 above, transactions RO-60 and RO-61 may be performed in either order, as decided by the Treatment Delivery Device (TDD). One or the other (but not both) of these options must be taken.

1245

**Pre-conditions:**

The Treatment Delivery Workflow - II Integration Profile presumes that the TMS has previously received all information required (generated externally or internally) to effectively respond to queries issued by the TDD. In particular, the TMS knows the SOP Instance UID of the specific

1250 RT Plan/RT Ion Plan to be delivered by the TDD. The OST is in possession of the plan and the records in order to be able to fulfill its role as the repository of plans for the TMS. The TMS uses this repository to allow the user to select and schedule the plans to be treated. The TDD retrieves that plan from the OST to ensure that the plan treated is consistent with the plan having been scheduled in the TMS. The acquisition of such information by the OST is out of band for this profile.

1255

**Main Flow:**

The user at the TDD invokes a Worklist Query to request that the TMS sends a scheduled treatment delivery worklist. The TDD gets a list of Patients to be treated, which may have zero or more entries. If the patient to be treated is found, the user selects the patient to be treated.

1260

The TDD delivers the treatment.

Once the treatment delivery is finished (completely or partially), the TDD reports the results of the treatment delivery session to the TMS.

**Treatment Cancellation Prior to Radiation:**

1265 Cancellation of a treatment delivery during radiation is fully described by Figure 9.4.2.1.2-1, taking into account the different final state requirements of RO-64 and the CANCELED status in RO-65. Note for Figure 9.4.2.1.2-1 that:

- Any Update Treatment Delivery Progress RO-62, if present, issued prior to cancellation will have a reported Procedure Step Progress (0074,1004) of 0% in this scenario.
- The Store Treatment Delivery Results (RO-63) transaction is optional in this scenario.
- The Update Workitem to Final State (RO-64) transaction is optional in this scenario if the Final State conditions have already been met by previous RO-62 transaction(s).

1270

**Treatment Completion or Cancellation After Radiation:**

An important use case associated with treatment delivery is that of treatment completion following a delivery interruption.

1275

- If the delivery interruption is of a transient nature (e.g., a temporary issue with the delivery machine or a patient position issue caused temporary interruption of the delivery), then the TDD may choose to manage the completion internally and notify the TMS that the UPS has finally completed normally.
- If the delivery interruption leads to the UPS being moved to the 'CANCELED' state, this requires that a new UPS be scheduled (e.g., if the completion requires re-planning or needs to be performed in a different time slot). The TMS then manages the new UPS, specifies a Text Value of 'CONTINUATION' in the Scheduled Processing Parameters Sequence when returning a query result, and supplies the Start Meterset of the continuation treatment in the Delivery Instruction.

1280

1285

**Post-conditions:**

After completion of the treatment delivery, the Treatment Delivery Result objects are stored in the OST and the UPS is updated with the state COMPLETED.

## 9.5 TDW-II Security Considerations

1290 At a minimum, the consistency checks specified in this appendix shall be performed. Vendors are expected to handle inconsistencies according to their hazard analysis. The relevant hazard analysis information shall be made available upon request to guide testing. This information should be made available to IHE-RO Connectathon Test Manager to facilitate testing of the hazards.

1295 Where Patient Name components are mentioned, they must agree in First Name and Last Name only (in default character set). Comparison may be case-insensitive.

In the UPS contained in the C-FIND response it is expected that there will be consistency between TMS response and TDD local data in the following elements, but no safety check is required at this point, since no commitment to treat exists:

- a. Patient Name
- 1300 b. Patient ID
- c. Patient DOB
- d. Patient Sex
- e. SOP Instance UID of RT Plan/RT Ion Plan

1305 In the RT Plan/RT Ion Plan instance retrieved from the OST it is expected that there will be consistency with TDD local data in the following elements:

- a. Patient Name
- b. Patient ID
- c. Patient DOB
- d. Patient Sex
- 1310 e. SOP Instance UID of RT Plan/RT Ion Plan
- f. Number of Beams
- g. Beam Number for each beam to be treated
- h. Beam Meterset for each beam in the Referenced Beam Sequence of the Fraction Group Sequence
- 1315 i. Referenced Beam Number in the Referenced Beam Sequence of the Fraction Group Sequence

In the RT Beams Delivery Instruction instance retrieved from the TMS it is expected that there will be consistency with TDD local data in the following elements:

- a. Patient Name
- 1320 b. Patient ID
- c. Patient DOB
- d. Patient Sex

- e. SOP Instance UID of RT Plan/RT Ion Plan
- f. Referenced Beam Number in the Beam Task Sequence
- 1325 g. Continuation Start Meterset (if present) for each beam
- h. Continuation End Meterset (if present) for each beam

All comparisons of Meterset values in RT Plan/RT Ion Plan and RT Beams Delivery Instruction instances retrieved from the TMS must agree with corresponding TDD local data within clinically meaningful precision (as defined by the TDD).

- 1330 Meterset values in RT Plan/RT Ion Plan and RT Beams Delivery Instruction instances retrieved from the TMS must satisfy
  - a. Continuation Start Meterset  $\geq 0$
  - b. Continuation Start Meterset  $\leq$  Beam Meterset
  - c. Continuation End Meterset  $\leq$  Beam Meterset
  - 1335 d. Continuation End Meterset  $\geq$  Continuation Start Meterset

Inconsistency in Fraction Number is handled at the discretion of the TDD.

In case of inconsistency between RT Plan/RT Ion Plan and RT Beams Delivery Instruction instances retrieved from the TMS and local data, the TDD must either (1) refuse treatment or (2) require user to override in a recorded and auditable manner.

- 1340 a. Override of Meterset may be recorded in RT Beam Treatment Record, but it is not mandated.  
The TDD will ensure that the RT Beams Treatment Record/RT Ion Beams Treatment Record instance returned to the TMS is consistent with the RT Plan/RT Ion Plan instance retrieved from the TMS:
  - a. Patient Name
  - 1345 b. Patient ID
  - c. Patient DOB
  - d. Patient Sex
  - e. SOP Instance UID of RT Plan/RT Ion Plan in Referenced RT Plan Sequence
  - f. Referenced Beam Number

- 1350 In case of inconsistency in the elements listed below between the RT Plan/RT Ion Plan instance retrieved from the OST and the RT Beams Treatment Record/RT Ion Beams Treatment Record instance returned by the TDD, the TMS will require audited review of the mis-identified record(s):
  - a. Patient Name
  - 1355 b. Patient ID
  - c. Patient DOB
  - d. Patient Sex

- e. SOP Instance UID of RT Plan/RT Ion Plan in Referenced RT Plan Sequence
- f. Referenced Beam Number

1360 **9.6 TDW-II Cross Profile Considerations**

The profile supports scheduling of treatments and resumptions only and does not cover transactions within the workflow for other procedures executed during a treatment session like image acquisition, matching and positioning.

1365

# Appendices to Volume 1

None

## Glossary

- 1370 Please see the IHE Technical Frameworks General Introduction, [Appendix D - Glossary](#) for the IHE Glossary.

## Radiation Oncology Glossary Terms

- 1375 **Dosimetric Plan:** an RT Plan object containing sufficient information to dosimetrically define a radiation therapy treatment. The Dosimetric Plan shall contain references to RT Structure Set and RT Dose objects. A Dosimetric Plan shall contain a Fraction Group Sequence (300A,0070) containing a single sequence item. Each beam in the Referenced Beam Sequence (300C,0004) shall have its Beam Meterset (300A,0086) defined.