

The IHE logo consists of the letters 'IHE' in a bold, dark blue, sans-serif font. A vertical line is positioned to the right of the letters, separating them from the tagline.

Integrating  
the Healthcare  
Enterprise

# Aggregate Data Exchange (ADX) Profile

James Kariuki and Bob Jolliffe

## Background

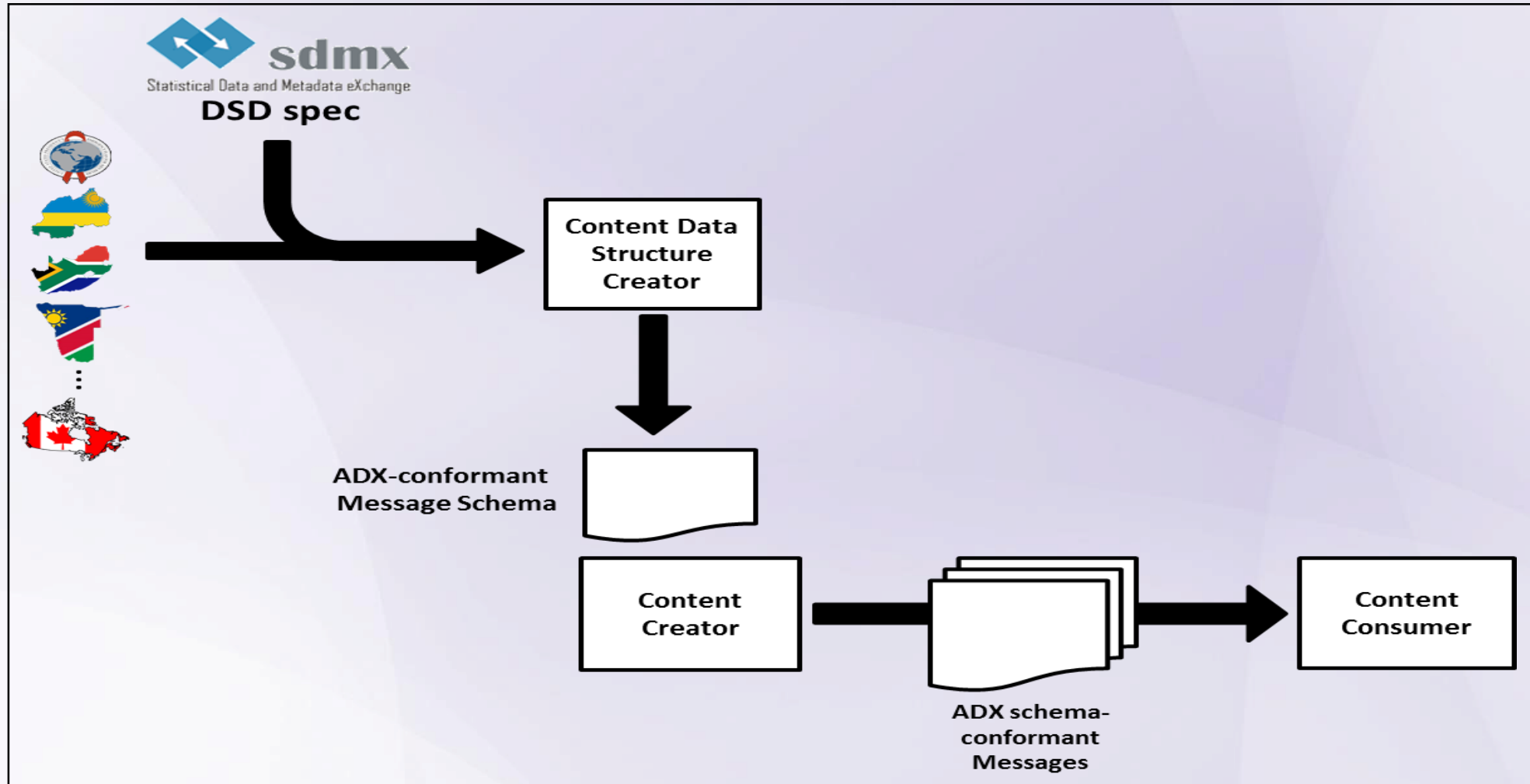
### Problem addressed

- Aggregate health data for routine reporting is used in most countries in the world.
- Increasingly, electronic data systems are adopted to manage health data. But ...
  - Routine reports printed and re-entered manually into another system.
  - No widely adopted standard of formatting and exchanging aggregate data.
  - Aggregate data exchange exists in ad-hoc or use of de-facto methods

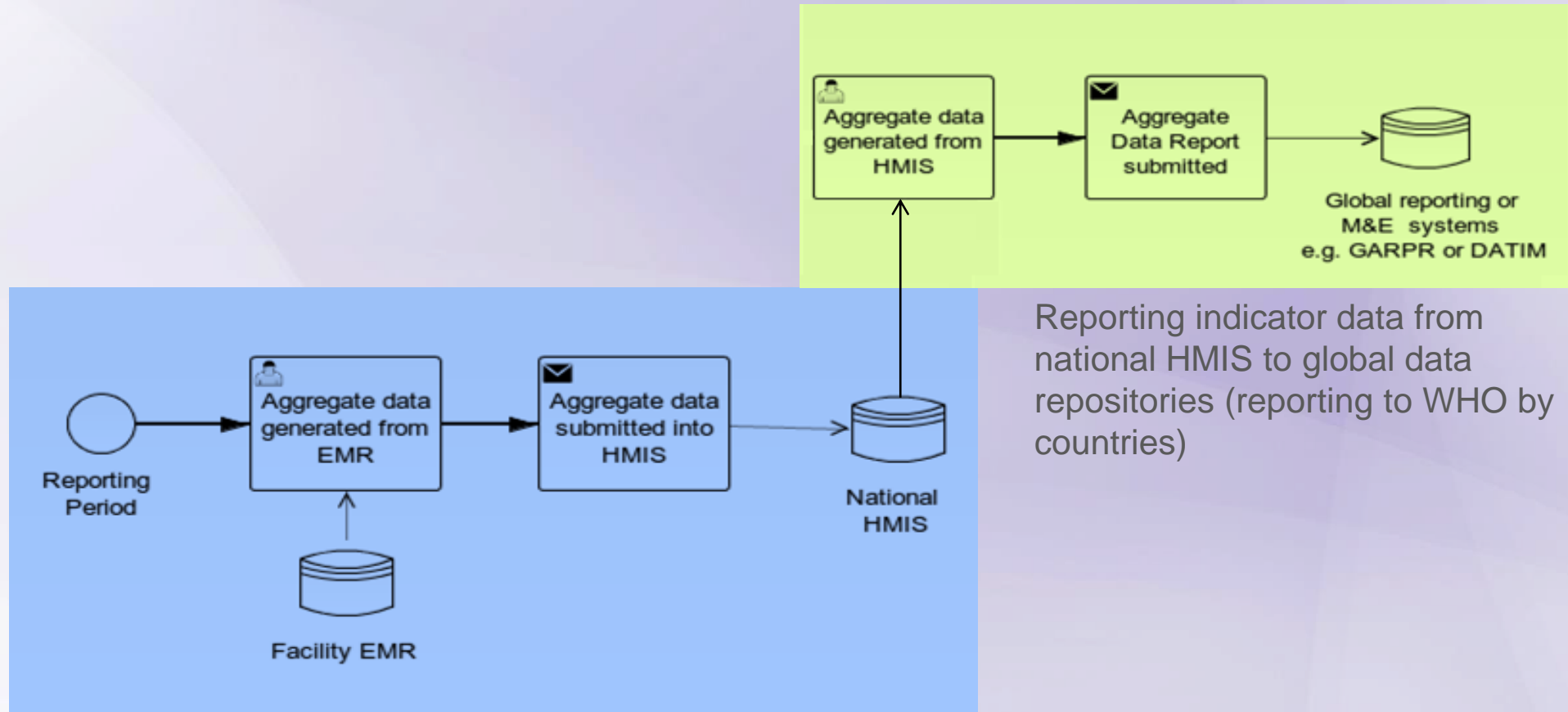
### Value proposition

- Can meet reporting requirements in resource and technologically diverse settings.
- ADX is a significant step forward in providing a standards based profile for aggregate health information data flow to.
  - Support the health workflows for local, national and international use.
  - Support electronic reporting to Improve on the slow, labor intensive and error prone manual process.

## Technical solution



## ADX Use Cases Adapted



Routine reporting of indicator data from electronic medical record systems

Reporting indicator data from national HMIS to global data repositories (reporting to WHO by countries)

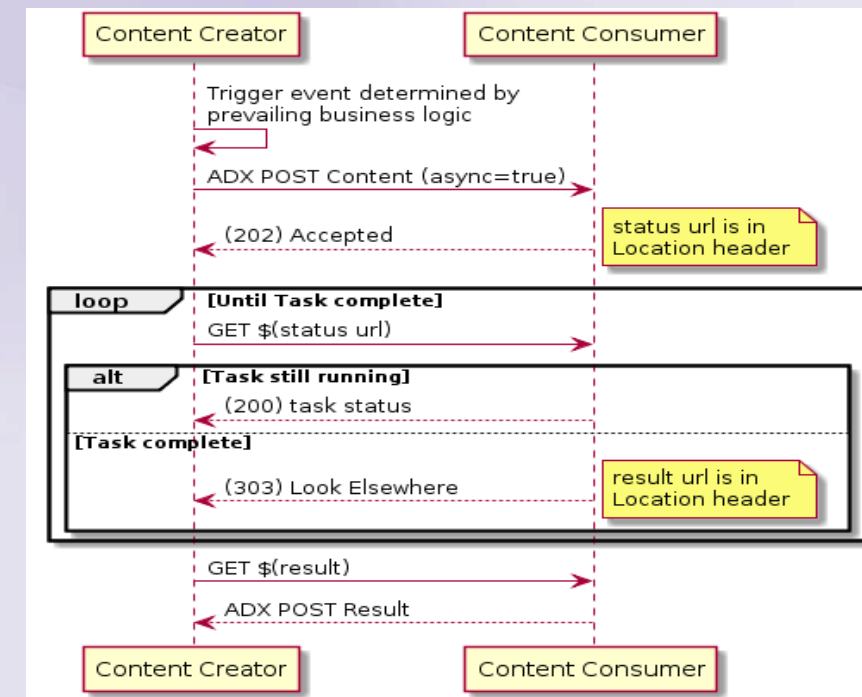
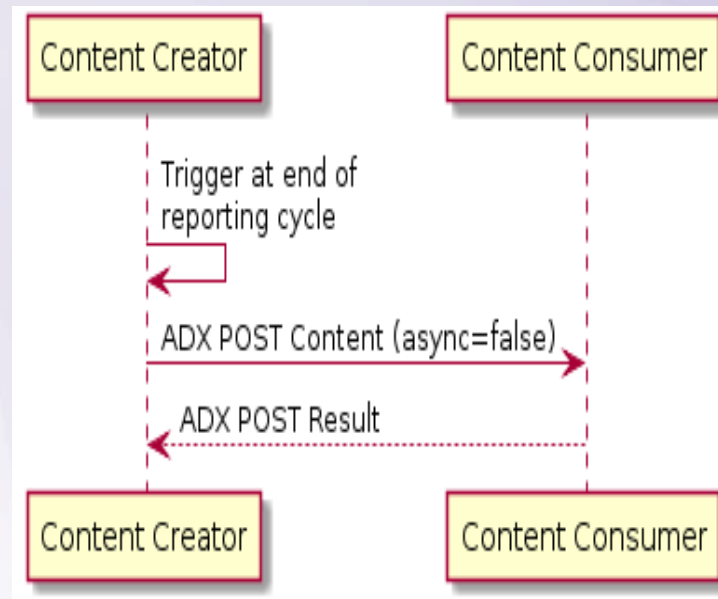
## ADX Profile Enhancement

### Validation of ADX messages

- Structure and content of ADX data messages can be validated using schemas derived from the ADX compliant DSD.
  - W3C XML schema definition
  - an ISO Schematron schema

### Transport specification

- The ADX POST Content is implemented as an HTTP request using the POST method as specified in RFC2616



**Thank You**