

Integrating the Healthcare Enterprise



5

IHE Patient Care Coordination Technical Framework Supplement

10

International Patient Summary (IPS)

HL7[®] FHIR[®] R4

Using Resources at FMM Level 0-N

15

Revision 1.2 – Trial Implementation

20 Date: October 9, 2023
Author: PCC Technical Committee
Email: pcc@ihe.net

25

Please verify you have the most recent version of this document. See [here](#) for Trial Implementation and Final Text versions and [here](#) for Public Comment versions.

Foreword

30 This is a supplement to the IHE Patient Care Coordination Technical Framework V11.0. Each supplement undergoes a process of public comment and trial implementation before being incorporated into the volumes of the Technical Frameworks.

This supplement is published on October 9, 2023 for trial implementation and may be available for testing at subsequent IHE Connectathons. The supplement may be amended based on the results of testing. Following successful testing it will be incorporated into the Patient Care
35 Coordination Technical Framework. Comments are invited and can be submitted at https://www.ihe.net/PCC_Public_Comments.

This supplement describes changes to the existing technical framework documents.

“Boxed” instructions like the sample below indicate to the Volume Editor how to integrate the relevant section(s) into the relevant Technical Framework volume.

40

<i>Amend section X.X by the following:</i>
--

Where the amendment adds text, make the added text **bold underline**. Where the amendment removes text, make the removed text **~~bold strikethrough~~**. When entire new sections are added, introduce with editor’s instructions to “add new text” or similar, which for readability are not bolded or underlined.

45

General information about IHE can be found at [IHE.net](https://www.ihe.net).

Information about the IHE Patient Care Coordination domain can be found at [IHE Domains](https://www.ihe.net/Domain).

Information about the organization of IHE Technical Frameworks and Supplements and the process used to create them can be found at [Profiles](https://www.ihe.net/Profiles) and [IHE Process](https://www.ihe.net/Process).

50 The current version of the IHE Patient Care Coordination Technical Framework can be found at <https://profiles.ihe.net/PCC>.

CONTENTS

55	Introduction to this Supplement.....	7
	History of Changes (as of October 2023)	8
	Open Issues and Questions	8
	Closed Issues.....	12
60	IHE Technical Frameworks General Introduction.....	14
	9 Copyright Licenses.....	14
	9.1.x CEN (European Committee for Standardization)	14
	10 Trademark	15
	IHE Technical Frameworks General Introduction Appendices.....	16
65	Appendix A – Actors	16
	Appendix B – Transactions.....	16
	Appendix D – Glossary.....	17
	Volume 1 – Profiles	18
	Domain-specific additions	18
70	X International Patient Summary (IPS) Profile	18
	X.1 IPS Actors, Transactions, and Content Modules	18
	X.1.1 Actor Descriptions and Actor Profile Requirements.....	19
	X.1.1.1 Content Creator.....	19
	X.1.1.1.1 Trigger Events.....	19
75	X.1.1.2 Content Consumer	19
	X.2 IPS Actor Options	19
	X.2.1 CDA Option	20
	X.2.2 CDA Complete Option.....	20
	X.2.3 FHIR Option.....	20
80	X.2.4 FHIR Complete Option	21
	X.2.5 CDA Occupational Data for Health Option	21
	X.2.6 FHIR Occupational Data for Health Option.....	21
	X.2.7 Complete Discrete Data Import Option.....	22
	X.3 IPS Required Actor Groupings	22
85	X.4 IPS Overview	22
	X.4.1 Concepts	22
	X.4.2 Use Cases	22
	X.4.2.1 Use Case #1: Emergency Care Abroad	22
	X.4.2.1.1 Emergency Care Abroad Use Case Description	22
90	X.4.2.1.2 Emergency Care Abroad Process Flow	23
	X.4.2.2 Use Case #2: Elective Surgery Abroad	23
	X.4.2.2.1 Elective Surgery Abroad Use Case Description	23
	X.4.2.2.2 Elective Surgery Abroad Process Flow	24
	X.4.2.3 Use Case #3: Managing Work-Related Illness While Working Abroad.....	24

95	X.4.2.3.1 Managing Work-Related Illness While Working Abroad Use Case	
	Description	24
	X.4.2.3.2 Managing Work-Related Illness While Working Abroad Process Flow...	25
	X.4.2.4 Use Case #4: Within Border Emergency Care	26
	X.4.2.4.1 Within Border Emergency Care Use Case Description.....	26
100	X.4.2.4.2 Within Border Emergency Care Process Flow	26
	X.5 IPS Security Considerations.....	27
	X.6 IPS Cross Profile Considerations	27
	Appendices to Volume 1	29
	Volume 2 – Transactions	30
105	Volume 3 – Content Modules.....	31
	5 IHE Namespaces, Concept Domains and Vocabularies	31
	5.1 IHE Patient Care Coordination Namespaces	31
	5.2 IHE Patient Care Coordination Concept Domains.....	31
	5.3 IHE Patient Care Coordination Format Codes and Vocabularies	31
110	5.3.1 IHE Format Codes.....	31
	5.3.2 IHEActCode Vocabulary	31
	5.3.3 IHERoleCode Vocabulary.....	31
	6 PCC HL7 V3 CDA Content Modules.....	32
	6.1 Conventions	32
115	6.2 Folder Modules	32
	6.3 Content Modules	32
	6.3.1 CDA Document Content Modules	32
	6.3.1.D International Patient Summary (IPS) Document Content Module.....	32
	6.3.1.D.1 Format Code	32
120	6.3.1.D.2 Parent Template	32
	6.3.1.D.3 Referenced Standards	32
	6.3.1.D.4 Data Element Requirement Mappings to CDA	33
	6.3.1.D.5 International Patient Summary (IPS) Document Content Module	
	Specification	42
125	6.3.2 CDA Header Content Modules	46
	6.3.3 CDA Section Content Modules.....	46
	6.3.3.10 CDA Section Content Modules	46
	6.3.3.10.S1 IPS Advance Directives Section Content Module.....	47
	6.3.3.10.S2 IPS History of Pregnancy Section Content Module	47
130	6.3.3.10.S3 IPS Vital Signs Section Content Module	48
	6.3.3.10.S4 IPS Functional Status Section Content Module	50
	6.3.3.10.S5 IPS Plan of Care Section Content Module	51
	6.3.3.10.S6 IPS Social History Section Content Module	52
	6.3.4 CDA Entry Content Modules.....	52
135	6.3.4.E1 IPS Survey Panel.....	52
	6.3.4.E2 IPS Survey Observation	53

	6.3.4.E3 IPS Vital Signs Organizer	53
	6.3.4.E4 IPS Vital Signs Observation	54
	6.3.4.E5 IPS Planned Observation	54
140	6.3.4.E6 IPS Planned Procedure.....	55
	6.3.4.E7 IPS Planned Encounter.....	56
	6.3.4.E8 IPS Planned Immunization.....	57
	6.3.4.E9 IPS Planned Act	57
	6.3.4.E10 IPS Pregnancy Status Observation.....	58
145	6.3.4.E11 IPS Pregnancy Observation	58
	6.3.4.E12 IPS Advance Directive Organizer.....	59
	6.3.4.E13 IPS Advance Directive Observation	59
	6.3.4.E14 IPS Social History Observation	60
	6.4 Section not applicable	61
150	6.5 PCC Value Sets and Concept Domains	61
	6.6 HL7 FHIR Content Module	61
	6.6.X.1 FHIR Resource Bundle Content.....	61
	6.6.X.1.2 FHIR Resource Data Specifications	63
	6.6.X.1.2.1 FHIR IPS Patient Attributes Section.....	63
155	6.6.X.1.2.2 FHIR IPS Patient's Address Book Section.....	64
	6.6.X.1.2.3 FHIR IPS Advanced Directives Section	64
	6.6.X.1.2.3.Z Advanced directives Resource References	65
	6.6.X.1.2.4 FHIR IPS Allergy Intolerance Section.....	66
	6.6.X.1.2.5 FHIR IPS Functional Status Section.....	67
160	6.6.X.1.2.6 FHIR IPS History of Past Problems Section.....	68
	6.6.X.1.2.6.Z IPS History of Past Problems References.....	68
	6.6.X.1.2.7 FHIR IPS History of Pregnancy Section.....	69
	6.6.X.1.2.8 FHIR IPS History of Procedures Section.....	70
	6.6.X.1.2.9 FHIR IPS Immunizations Section.....	70
165	6.6.X.1.2.10 FHIR IPS Medical Devices Section.....	71
	6.6.X.1.2.11 FHIR IPS Medication Summary Section.....	72
	6.6.X.1.2.12 FHIR IPS Plan of Care Section.....	73
	6.6.X.1.2.13 FHIR IPS Problems Section.....	74
	6.6.X.1.2.14 FHIR IPS Results Section.....	75
170	6.6.X.1.2.15 FHIR IPS Social History Section.....	76
	6.6.X.1.2.15.1 CEN/ISO FHIR IPS Social History Elements.....	76
	6.6.X.1.2.15.2 Occupational Data for Health Option FHIR IPS Social History Additional Elements	76
	6.6.X.1.2.16 FHIR IPS Vital Signs Section.....	77
175	6.6.X.1.2.17 FHIR IPS Cross Border Section.....	78
	6.6.X.1.2.18 FHIR IPS Provenance Metadata	78
	7 DICOM Content Definitions.....	80
	Appendices to Volume 3.....	81

	Appendix A – IPS Gherkin Test Scripts.....	81
180	A.1 IPS Content Creator CDA Option Test Script	81
	A.1.1 Test Steps	81
	A.2 IPS Content Creator FHIR Option Test Script.....	81
	A.2.1 Test Steps	81
	A.5 IPS Content Consumer View Option Test Script.....	81
185	A.5.1 Test Steps	81
	A.6 IPS Content Consumer Document Import Option Test Script.....	82
	A.6.1 Test Steps	82
	A.7 IPS Content Consumer Section Import Option Test Script	82
	A.7.1 Test Steps	82
190	A.8 IPS Content Consumer Discrete Data Import Option Test Script.....	83
	A.8.1 Test Steps	83
	Volume 4 – National Extensions	84

Introduction to this Supplement

195 Whenever possible, IHE profiles are based on established and stable underlying standards. However, if an IHE domain determines that an emerging standard has high likelihood of industry adoption, and the standard offers significant benefits for the use cases it is attempting to address, the domain may develop IHE profiles based on such a standard. During Trial Implementation, the IHE domain will update and republish the IHE profile as the underlying standard evolves.

200 Product implementations and site deployments may need to be updated in order for them to remain interoperable and conformant with an updated IHE profile.

This IPS Profile incorporates content from Release 4 of the HL7[®] FHIR[®] specification. HL7 describes FHIR Change Management and Versioning at <https://www.hl7.org/fhir/versions.html>.

205 HL7 provides a rating of the maturity of FHIR content based on the FHIR Maturity Model (FMM): level 0 (draft) through N (Normative). See <http://hl7.org/fhir/versions.html#maturity>.

The FMM levels for FHIR content used in this profile are:

FHIR Content (Resources, Profiles, etc.)	FMM Level
Documents	3
Patient	N
Practitioner	3
MedicationStatement	3
Medication	3
AllergyIntolerance	3
Condition	3
Immunization	3
Procedure	3
Organization	3
DeviceUseStatement	0
Device	2
Observation	N
Specimen	2
Imaging Study	3
DiagnosticReport	3
CarePlan	2
Consent	2
VitalSigns	N/A

210 This IPS directly follows the CEN project that includes CEN, HL7 and IHE experts and produces a content specification (CEN) with a global perspective and two Implementation Guides (HL7) for CDA and FHIR developed by HL7 in conformity with the CEN IPS dataset. ISO TC/215 has agreed to submit ISO 27269 Health Informatics – The International Patient Summary (EN 17269:2019) for DIS ballot. The CEN TS 17288 Health informatics — The International Patient Summary: Guideline for European Implementation will be likely published on April 2020. The HL7 CDA IG has been completed and published as STU, the HL7 FHIR IG, already positively 215 balloted, will be likely published as STU April 2020. IHE International has been encouraged to both profile this work, and to contribute efforts towards Connectathon testing, Conformity Assessment, and demonstration opportunities. This profile describes how to use the IPS to support multiple international use cases, allowing for testing and deployment in commercial products. This IPS Profile uses the HL7’s IPS Implementation Guides that realize the CEN EN 220 17269 IPS dataset. This encourages implementation and testing among vendors to provide additional feedback and real-world use of the standard. Candidates for recommended changes to the underlying Implementation Guides (IGs) will be submitted to HL7 for further consideration. Candidates for recommended changes to the underlying standard will be submitted to CEN for further consideration and recommendations.

225 This work effort will also include specification considerations for testing. Structure of such documentation is pending further consideration and has yet to be specified.

This supplement also references and draws upon the following documents. The reader should review these documents as needed:

1. System of Concepts for Continuity of Care ISO 13940:2015 (2019/10/28)

230 **History of Changes (as of October 2023)**

Date	Revision	Change Summary
October 2023	1.2	Updated to correct the Occupational Data for Health (ODH) option to the FHIR document which was incorrectly pointing to the CDA ODH option specification. This version correctly specifies the ODH FHIR option, with updates to: <ul style="list-style-type: none"> • Open Issues and Questions • X.2 Actors and Options to reference the correct section • X.2.6 FHIR Occupational Data for Health Option to describe the option and point to the correct section in volume 3 • 6.6.x.1 Referenced Standards to add the reference to the related FHIR profiles for FHIR R4, IPS, foundational FHIR content for ODH, and to include the links to the International Labor Organization (ILO) value sets for Occupation and Industry. • 6.6.X.1.2.15 FHIR IPS Social History Section to specify the ODH content fulfilling the ODH option

Open Issues and Questions

1. Formalizing the process of iterative updates to HL7 and CEN and associated modifications to the profile (2019/09/30).

2. Volume 1 needs test language for content creator and content consumer (2019/11/13).
- 235 3. Workflow considerations have been discussed, but is currently out of scope. (2019/10/24).
4. Level of specificity for volume 3 content is pending further research (2019/11/13).
5. SNOMED-CT Copyright language needs to be updated because the “International Health Terminology Standards Development Organization” is Now known as SNOMED International. Note also that the IPS HL7 IGs utilize SNOMED’s recently-released Global Patient Set <https://www.snomed.org/news-and-events/articles/global-patient-set-1> (2019/10/28).
- 240 6. The optionality terminology used in this profile are taken directly from the CEN IPS Standard. Alignment between CEN/HL7 conformance and IHE conformance is (0 = 0, R = RE/R2, M = R, C = C, F = fixed value, NP = Not present).
- 245 7. IHE is anticipating continued updates to the HL7 CDA IPS specification, corresponding updates will be made to this document once the HL7 Specification document is published and publicly available this IHE profile will be updated to point to that final content.
8. The IPS CDA specification constructs will be updated to reflect alignment with CDA updates in HL7. Public comment version describes the intended modeling, but template identifiers and conformance statement identifiers will be updated to align with the HL7 IPS CDA anticipated updates.
- 250 9. HL7 CDA pg.58 Patient Contact's / Preferred HP's Address role element = error, are these tool errors (2020/02/11)?
- 255 10. The 2018 version of HL7’s IPS CDA Care plan only supports 1 narrative. It does not specify support for a coded care plan, but this is specified as optional in CEN. This is available in IHE: 6.3.3.6.15 Coded Care Plan Section 1.3.6.1.4.1.19376.1.5.3.1.3.36 (2020/02/11).
- 260 11. The Complete options described in Section X.2 (e.g., Complete CDA Option and Complete FHIR Option) currently are not modeled in Volume 3. This will be updated after public comment.
- 265 12. There are 2 value sets defined for problem list (only the first is specified by the IG) below. What is the difference? The name implies that only disorders are in the specified list, and not clinical findings. : CORE Problem List 2.16.840.1.113883.11.22.7 ('The CORE Problem List Subset of SNOMED CT

The Clinical Observations Recordings and Encoding (CORE) Problem List Subset is a UMLS CORE Project with the purpose of defining a UMLS subset that is most useful for documenting and encoding clinical information at a summary level. The CORE Problem List Subset includes SNOMED CT concepts and codes that can be used for the problem list, discharge diagnoses, or reason of encounter. https://www.nlm.nih.gov/research/umls/Snomed/core_subset.html} There are 2 value sets defined for problem list (only the first is specified by the IG) below. What is the

difference? The name implies that only disorders are in the specified list, and not clinical findings. : CORE Problem List 2.16.840.1.113883.11.22.7 ('The CORE Problem List Subset of SNOMED CT (2020/02/16)).

- 275 13. Allergy Intolerance category (e.g., food, medication, environment, biologic) needs a new LOINC Code (2020/02/28).
14. Until HL7 assigns new OIDs for the restructured IPS CDA sections, their OIDs will remain as TBD within this profile.
- 280 15. HL7 CDA IPS Advance Directives Section only supports directive description. It does not specify support for coded Advance Directives, but this is specified as optional in CEN. Draft modeling is provided in this profile.
16. HL7 CDA IPS Allergies and Intolerances Section Value sets do not match value sets in the FHIR IPS.
- 285 17. HL7 CDA IPS Allergies and Intolerances Section does not support Allergy Severity and Allergy Category. Draft modeling is provided in this profile.
18. HL7 CDA IPS Functional Status only supports a text section, but none of the other functional status elements specified by CEN are supported. Including the elements that are specified as required if known. Draft modeling is provided in this profile.
- 290 19. HL7 CDA IPS History of Past Illness has differences in naming between element between HL7 and CEN, 'History of Past Illness' name is different (this is HL7), CEN/ISO uses 'History of Past Problems'.
20. HL7 CDA IPS History of Pregnancy does not support a time stamp for outcome date, required by CEN, and does not support specialist contact, optional by CEN. Draft modeling is provided in this profile.
- 295 21. HL7 CDA IPS History of Pregnancy does not allow for Null value to be represented.
22. HL7 CDA IPS Care Plan only supports 1 narrative. No support for coded care plan, but not required by CEN. Draft modeling is provided in this profile.
23. IPS Results is R in HL7 and RK in CEN. HL7's optionality used for this profile.
- 300 24. HL7 CDA IPS Social History section Lifestyle Factor Observation specified for Alcohol and Smoking but does not support other social history metrics listed as the types of social history metrics identified by the standards. Value set for Social History Type defined but not used. Lifestyle factor description, Text description not supported at entry level for the social history observation. Draft modeling is provided in this profile.
- 305 25. HL7 CDA IPS Coded Vital Signs Section available in HL7 IPS but defined in CEN as Optional. Draft modeling is provided in this profile.
26. HL7 CDA IPS Immunization does not support substanceAdministration. Draft modeling is provided in this profile.

- 310 27. Why is the Patient-uv-ips Structure definition Resource (<http://hl7.org/fhir/uv/ips/StructureDefinition/Patient-uv-ips>) a 0..* cardinality? You should not have more than one patient for a patient summary.
28. Review the FHIR modeling for the specialist contact located in the table in Section 6.6.X.1.2.4.
- 315 29. The value set for Problem type in History of Past Problems (sectionPastIllnessHx.entry.pastProblem.Condition-uv-ips.category) is not really what CEN/ISO was looking for: A means of categorizing the different types of problem. This can be represented by a value set, for example it could be findings, preliminary diagnosis, diagnosis, clinical risks and medical alerts. Note, ‘Medical Alerts’, i.e., one type of alert, are represented here in this first iteration of this standard.
- 320 30. Problem type in History of Past Problems (sectionPastIllnessHx.entry.pastProblem.Condition-uv-ips.category) has no SNOMED-CT qualifier value for Medical Alert.
31. Add a slice for current Observation-pregnancy-status-uv-ips pregnancy composition. section:sectionPregnancyHx.entry to include a space for pregnancy details in IPS FHIR IG.
- 325 32. For current Observation-pregnancy-status-uv-ips pregnancy status.code - provide guidance list - 3rd entry with a pregnancyHistory (sister hasMember.Reference(Observation (list)) (IF PREGNANT) add slice - immediately for current pregnancy: permitted behavior, not required behavior.
- 330 33. For Composition.Section.sectionPlanOfCare there should be more than 1 plan care type and it should be able to represent dates.
34. Review input on the FHIR modeling or specialist contact in 6.6.X.1.2.11 IPS Problems
35. Gherkin Language for the test scripts exist in the Appendix, however the scripts on the Cucumber tool need to be updated and specified.
- 335 36. SNOMED Terminology - Is there a specific link for the internationally available subset and does it have a name?
37. Proposed CDA entry for IPS Coded Vital Signs constraints should be incorporated into Art-Décor to be consistent with the HL7 CDA IPS tooling.
38. Until such time that HL7 includes coded functional status it will exist within this profile.
39. Table 6.3.1.D.3-1 When ISO publishes this will need to be changed to ISO/IS 27269
- 340 40. IHE and HL7 are still working on the collaborative approach to the evolution of the IPS Template. For now IHE and HL7 have agreed that this will be an evolving document and the OIDs will remain the same with Versioning included. Further harmonization to align HL7 and IHE is still under consideration.

- 345 41. There is no proper way to reference the specialist contact in the HL7 FHIR IPS IG at this point. When the specialist contact is supported in the HL7 implementation Guide the proper reference will be included in this profile.
42. Pregnancy observations may be needed for future uses of the section, however there is no process agreement with IHE and CEN about adding elements that are not specified in the base standard. An optional Pregnancy observation is added to fulfill the future need of
350 this, but no requirements of its use are added.
43. Current Mapping and support for immunization Target disease needs further discussion and will remain as unknown until it can be officially supported in CDA.

Any social history observation may be represented in the open entry under section:socialHistory, including alternate metrics for smoking and alcohol use, as well as work information (e.g.,
355 current/past job(s), longest-held occupation, etc.).

[Occupational Data for Health resources are profiled as international resources based on the US Realm specification in HL7 FHIR Profile: Occupational Data for Health \(ODH\), Release 1.2 \(Standard for Trial Use\)](#). Should future releases of the HL7 FHIR profile for ODH be modified as International Realm, this profile will be updated to point to those updated profiles. The scope
360 of the modifications in the IHE ODH profiles is to reference ‘IPS Patient’ instead of US Core Patient, and to reference the 3 US-Centric value sets with binding of ‘example’ rather than ‘required’:

- Occupation
- Industry
- 365 • Supervisory Level or Pay Grade

Occupation, Industry, and Work Classification value sets may vary by jurisdiction. The US CDC census valuesets are provided as an ‘example binding’. There is no apparent specification for an expression of ‘concept domain’, which is leveraged by multiple IHE QRPH and PCC profiles as a method to allow for jurisdictions to specify other value sets.

370 **Closed Issues**

1. For the trigger events – is this triggered only in anticipation of international travel or might this be a routine patient summary (2019/09/30)?
The IPS is for both planned and planned care (2019/11/12).
- 375 2. Consideration to relationship to other international standards (e.g., ISO 22857:2013 Health informatics — Guidelines on data protection to facilitate trans-border flows of personal health data) (2019/10/24).
This ISO 22857:2013 Health informatics — Guidelines on data protection to facilitate trans-border flows of personal health data will be referenced in the security considerations in Section X.5 (2019/11/12).

- 380 3. Consider referencing relationship to System of Concepts for Continuity of Care ISO 13940:2015 (2019/10/28).
The reference to System of Concepts for Continuity of Care ISO 13940:2015 will be put into the introduction (2019/11/12).
4. How to specify the Test plan documentation (2019/09/30).
- 385 The test plan language will be included within the appropriate sections using test language that will then be extracted into gazelle after publication (2019/11/13).
5. Use Case #3: Managing Work-Related Illness While Working Abroad, includes content that is not in the current version of the HL7/CEN/ISO IPS specifications, how and when to incorporate additional content needs to be determined and agreed upon (2019/10/24).
- 390 Upon further research there is reference to work history in these underlying standards. The removal of the specific Occupational Data for Health reference and just referencing work history makes this use case in line with the baseline standards (2019/11/13).

395

IHE Technical Frameworks General Introduction

400 The [IHE Technical Framework General Introduction](#) is shared by all of the IHE domain technical frameworks. Each technical framework volume contains links to this document where appropriate.

9 Copyright Licenses

405 IHE technical documents refer to, and make use of, a number of standards developed and published by several standards development organizations. Please refer to the IHE Technical Frameworks General Introduction, [Section 9 - Copyright Licenses](#) for copyright license information for frequently referenced base standards. Information pertaining to the use of IHE International copyrighted materials is also available there.

<i>Add Section 9.1.x to the IHE Technical Frameworks General Introduction</i>

410 **9.1.x CEN (European Committee for Standardization)**

You may participate in drafting ISO and ISO/IEC standards and you may submit content to the ISO and ISO/IEC standards development process. By participating in the ISO standards development process you get access to all kinds of information filed during this process such as standards and their drafts, content, etc. Content can be any kind of content submitted in the standards development process, such as publications, documents, text, figures, images, software, etc., to be considered for inclusion in ISO and ISO/IEC standards. You agree that:

- 415 1. The full copyright in all ISO standards and their drafts shall be owned by ISO. In the case of ISO/IEC standards, such ownership shall be held jointly by ISO and IEC.
- 420 2. Content, such as publications, documents, text, figures, images or other content that you submit to the ISO or ISO/IEC standards development process may be copyright protected. Copyright in such content remains with the initial copyright owner. If you offer such content, you undertake to declare this to ISO or ISO/IEC, identify the name of the copyright holder and assist ISO or ISO/IEC in obtaining appropriate permission to i) 425 share the content in the standards development process, ii) to publish the content, or parts thereof, in original or modified form in ISO or ISO/IEC standards and iii) to exploit the content as part of an ISO or ISO/IEC standard according to ISO and IEC practice. If you or the organization you are representing own/s the copyright in the content, such permission is implicitly granted to ISO or ISO/IEC, upon submission of the content to the standards development process. More details about the scope of the above permission are 430 available at connect.iso.org/x/SYBGAQ.
3. You agree to respect copyright in the standards, draft standards, and content of others submitted to the standards development process. You are allowed to share the standards

- 435 and drafts thereof within the standards development process according to ISO's copyright policy, POCOSA. POCOSA does not permit you to post standards and drafts thereof on the Internet for free public access.
4. Participation in the drafting of the standards, and content to the standards development process, are provided without any payment by ISO or IEC to you or any third party.
 - 440 5. Full copyright includes but is not limited to the exclusive right of reproduction, distribution, making available to the public, translation, adaptation, in any existing or future electronic or printed format, for the entire term of copyright protection.

10 Trademark

IHE[®] and the IHE logo are trademarks of the Healthcare Information Management Systems Society in the United States and trademarks of IHE Europe in the European Community. Please refer to the IHE Technical Frameworks General Introduction, [Section 10 - Trademark](#) for information on their use.

445

IHE Technical Frameworks General Introduction Appendices

450 The [IHE Technical Framework General Introduction Appendices](#) are components shared by all of the IHE domain technical frameworks. Each technical framework volume contains links to these documents where appropriate.

455 *Update the following appendices to the General Introduction as indicated below. Note that these are **not** appendices to this domain’s Technical Framework (TF-1, TF-2, TF-3 or TF-4) but rather, they are appendices to the IHE Technical Frameworks General Introduction located [here](#).*

[Appendix A – Actors](#)

460 *Add the following **new or modified** actors to the [IHE Technical Frameworks General Introduction Appendix A](#):*

New (or modified) Actor Name	Description
No new actors	

[Appendix B – Transactions](#)

465 *Add the following **new or modified** transactions to the [IHE Technical Frameworks General Introduction Appendix B](#):*

New (or modified) Transaction Name and Number	Definition
No new transactions	

470

Appendix D – Glossary

475

Add the following *new or modified* glossary terms to the [IHE Technical Frameworks General Introduction Appendix D](#):

New (or modified) Glossary Term	Definition	Synonyms	Acronym/ Abbreviation
No new terms			

Volume 1 – Profiles

480 **Domain-specific additions**

N/A

X International Patient Summary (IPS) Profile

485 This IPS profiles uses the HL7’s IPS Implementation Guides that realize the CEN EN 17269 IPS dataset. Additional options pertaining to occupational Data for health and section constrains for a complete IPS sections support are specified within this profile.

X.1 IPS Actors, Transactions, and Content Modules

490 This section defines the actors, transactions, and/or content modules in this profile. General definitions of actors are given in the Technical Frameworks General Introduction Appendix A. IHE Transactions can be found in the Technical Frameworks General Introduction Appendix B. Both appendices are located at http://ihe.net/Technical_Frameworks/#GenIntro

Figure X.1-1 shows the actors directly involved in the IPS Profile and the direction that the content is exchanged.

495 A product implementation using this profile may group actors from this profile with actors from a workflow or transport profile to be functional. The grouping of the content module described in this profile to specific actors is described in more detail in Required Actor Groupings PCC TF-1: X.6 or in Cross Profile Considerations PCC TF-1: X.6.

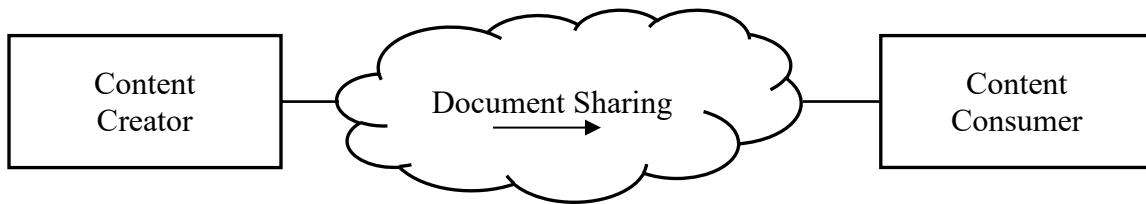


Figure X.1-1: IPS Actor Diagram

500 Table X.1-1 lists the content module(s) defined in the IPS Profile. To claim support with this profile, an actor shall support all required content modules (labeled “R”) and may support optional content modules (labeled “O”).

Table X.1-1: IPS – Actors and Content Modules

Actors	Content Modules	Optionality	Reference
Content Creator	Document Sharing [PCC-1] <small>See Note 1</small>	R	PCC TF-2: 3.1

Actors	Content Modules	Optionality	Reference
Content Consumer	Document Sharing [PCC-1] ^{See Note 1}	R	PCC TF-2: 3.1

Note 1: For FHIR transactions, see the MHD Profile [ITI-65] (<https://profiles.ihe.net/ITI/MHD/ITI-65.html>) which is referenced by [PCC-1]

505

X.1.1 Actor Descriptions and Actor Profile Requirements

Content module requirements are documented in PCC TF-3 Content Modules. This section documents any additional requirements on profile’s actors.

X.1.1.1 Content Creator

510 The Content Creator shall be responsible for the creation of content of an International Patient Summary document containing the data elements defined in PCC TF-3: 6.3.1.D.5 or, where the FHIR is used, containing the FHIR Document Bundle defined TF-3: 6.6.x.1.

X.1.1.1.1 Trigger Events

Upon the request to prepare an IPS Document.

X.1.1.2 Content Consumer

515 A Content Consumer is responsible for viewing, importing, or other processing options for an International Patient Summary document content created by an IPS Content Creator. This is specified in Document Sharing [PCC-1] transaction in PCC TF-2: 3.1.

X.2 IPS Actor Options

520 Options that may be selected for each actor in this profile, if any, are listed in the Table X.2-1. Dependencies between options, when applicable, are specified in notes.

Table X.2-1: International Patient Summary – Actors and Options

Actor	Option Name	Reference
Content Creator	CDA Option ^{Note 1}	Section X.2.1
	CDA Complete Option ^{Note 1}	Section X.2.2
	FHIR Option ^{Note 1}	Section X.2.3
	FHIR Complete Option ^{Note 1}	Section X.2.4
	CDA Occupational Data for Health Option	Section X.2.5
	FHIR Occupational Data for Health Option	Section X.2.6
Content Consumer	View Option ^{Note 2}	PCC TF-2: 3.1.1
	Document Import Option ^{Note 2}	PCC TF-2: 3.1.2

Actor	Option Name	Reference
	Section Import Option ^{Note 2}	PCC TF-2: 3.1.3
	Discrete Data Import Option ^{Note 2}	PCC TF-2: 3.1.4
	Complete Discrete Data Import Option ^{Note 2}	Section X.2.7

Note 1: The Content Creator must be able to support at least one of these options.

Note 2: The Content Consumer must implement at least one of these options.

525

X.2.1 CDA Option

This option defines the processing requirements placed on the Content Creators for producing a CDA structured document version of the International Patient Summary document. The CDA details are in Volume 3, Section 6.3.1.

530 X.2.2 CDA Complete Option

This option defines the International Patient Summary where all of the optional components (e.g., Advanced Directives, Functional Status, History of Past Illnesses, History of Pregnancy, Plan of Care, Social History, and Vital Signs) will become required if known. The processing requirements placed on the Content Creators for producing a Complete CDA structured document version of the International Patient Summary document are in are detailed in TF-3: 6.6.x.1.

535

This option reflects the CDA Option where all the optional sections in the template have a new optionality requirement of RE (required if known). This applies to the following sections:

- IPS Advance Directives
- IPS Functional Status
- IPS History of Past Illness
- IPS History of Pregnancy
- IPS Plan of Care
- IPS Social History
- IPS Vital Signs

540

545

X.2.3 FHIR Option

This option defines the processing requirements placed on the Content Creators for producing a FHIR document bundle version of the International Patient Summary document. The FHIR bundle details are in TF-3: 6.6.x.1.

550 **X.2.4 FHIR Complete Option**

This option defines the processing requirements placed on the Content Creators for producing a FHIR document bundle version of the International Patient Summary document. The FHIR bundle details are in TF-3: 6.6.x.1.

555 This option reflects the FHIR Option where all the optional sections in the template have a new optionality requirement of RE (required if known). This applies to the following sections:

- IPS Advance Directives
- IPS Functional Status
- IPS History of Past Illness
- IPS History of Pregnancy
- 560 • IPS Plan of Care
- IPS Social History
- IPS Vital Signs

X.2.5 CDA Occupational Data for Health Option

565 Content Creators implementing this option shall create Occupational Data for Health information that complies with the Occupational Data for Health Section specified in PCC CDA Supplement: 6.3.3.10.5 as a sub-section to the Coded Social History Section as specified in PCC CDA Supplement: 6.3.3.2.36.

570 The Social history observation entry template supports any social history observation available through LOINC codes, including, current/past job(s), usual (longest-held) work, employment status, retirement date(s), combat zone period(s), occupational data for household member, occupations, lifestyle, exercise, exposure risks, environmental health risk factors

X.2.6 FHIR Occupational Data for Health Option

575 This option defines the processing requirements placed on the Content Creators for producing a FHIR document bundle version of the International Patient Summary document with the Occupational Data for Health Option. The FHIR bundle details are in TF-3: 6.6.x.1.

Content Creators implementing this option shall create a Social History Section that includes additional work-related observation entries that comply with the Occupational Data for Health Content of the FHIR Social History Section specified in PCC TF-3: 6.6.X.1.2.15.2 as entries within the Social History Section as specified in PCC TF-36.6.X.1.2.15.

580 This option reflects the FHIR Option where the Social History section in the template has a new optionality requirement of R (required) that includes one or more work-related entries.

X.2.7 Complete Discrete Data Import Option

585 The Content Consumer implementing this option shall be able to discretely import all relevant content provided by the content creator.

X.3 IPS Required Actor Groupings

No required actor groupings

X.4 IPS Overview

590 This profile describes how to use the IPS to support multiple international use cases, allowing for testing and deployment in commercial products. This IPS profiles uses the HL7's IPS Implementation Guides that realize the CEN EN 17269 IPS.

X.4.1 Concepts

595 Patients that are traveling to other jurisdictions may be seeking care or in need of care during their travel. The listed use case scenarios describe a variety of care needs that can be supported by this content profile.

X.4.2 Use Cases

X.4.2.1 Use Case #1: Emergency Care Abroad

600 This Use case describes an Unscheduled, Cross Border care scenario where the healthcare provider is able to leverage the IPS summary record of the person to be treated where they otherwise would not have such information available.

X.4.2.1.1 Emergency Care Abroad Use Case Description

605 A student is attending University and is taking a semester abroad. He has fallen off his bike on his way to class, breaking his left arm, and was taken to the local hospital. The IPS shows that the patient is severely allergic to NSAIDs and the attending clinician provides an alternative method of pain management for the patient.

X.4.2.1.2 Emergency Care Abroad Process Flow

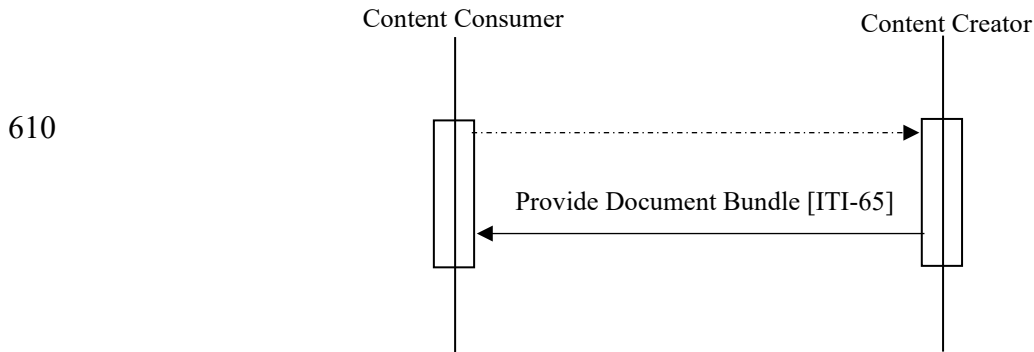


Figure X.4.2.2-1: Basic Process Flow in IPS Profile

Pre-conditions:

A student is attending University in a study abroad program.

The student is transported to the hospital.

620 **Main Flow:**

After getting access to the student’s international patient summary it is discovered that he is allergic to NSAIDs.

Based on this information the provider is able to make an informed decision when prescribing medication for pain management.

625 **Post-conditions:**

The student is able to use his medication without any adverse effects.

X.4.2.2 Use Case #2: Elective Surgery Abroad

This Use case describes a scheduled, Cross Border care scenario.

X.4.2.2.1 Elective Surgery Abroad Use Case Description

630 A man schedules a procedure in another country for medical services that are unavailable in their own country. Since the patient lives outside of this country the patient provides an available copy of his IPS generated from his patient record to the surgeon so that the surgeon can be informed before going into the surgery about any relevant issues that may affect the surgery. In accordance with local policy information about the healthcare visit is provided in the form of a new IPS for
635 the patient to take home.

X.4.2.2.2 Elective Surgery Abroad Process Flow

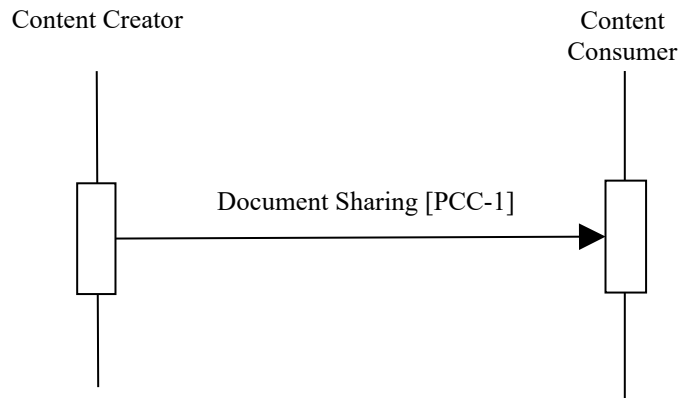


Figure X.4.2.2.2-1: Basic Process Flow in IPS Profile

Pre-conditions:

- 640 A patient is looking for elective surgery in another country.
The patient requests that a copy of his IPS be made available either in paper or electronic form.

Main Flow:

Based on this information in the IPS the surgeon is able to make informed decisions during the surgery.

- 645 Surgery is successful.

Post-conditions:

Information about the healthcare visit is provided in the form of an IPS back to patient to take home.

X.4.2.3 Use Case #3: Managing Work-Related Illness While Working Abroad

- 650 This use case describes a scheduled, cross border care scenario, with the Occupational Data for Health Option.

X.4.2.3.1 Managing Work-Related Illness While Working Abroad Use Case Description

- 655 A 43-year-old woman is assigned to train personnel in another country to demonstrate use of a polyurethane foam product in hospitals. After 4 months, she develops respiratory symptoms and is found to have new-onset asthma. The attending clinician reviews her IPS that implements the Occupational Data for Health Option, which includes information about her new job. The

660 clinician infers the causal link between the new work and the asthma and recommends changes in her job activities. In accordance to local policy a new International Patient Summary (IPS) is created.

X.4.2.3.2 Managing Work-Related Illness While Working Abroad Process Flow

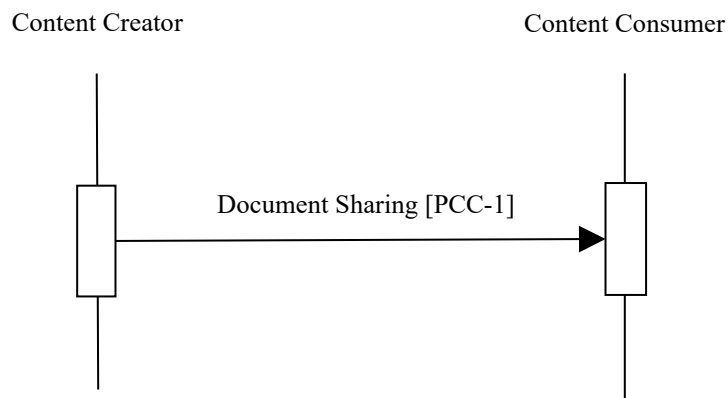


Figure X.4.2.3.2-1: Basic Process Flow in IPS Profile

Pre-conditions:

665 A patient is sent to another country for work by her company.
She has a medical exam prior to arriving in the new country where her medical record is updated.

Main Flow:

The patient develops asthma symptoms and consults a provider in the country she is working.
670 Using the patient's international patient summary with occupational health data included, the provider is able to see that exposure from work is causing these symptoms. The provider recommends a change in work practice to avoid further exposure and prescribes inhalers to the patient.

Post-conditions:

675 The engineering company provides portable ventilation exhaust systems to reduce exposures to other workers. The woman provides training to others without engaging in direct demonstration of foam production.

The new diagnosis of asthma related to this occupational hazard is added to the patient's EMR for the care provider's EMR.

680 A New IPS is created, including the original information imported by the provider plus the new diagnosis of asthma related to this occupational hazard, and made available for the patient to take home at the end of the episode of care.

X.4.2.4 Use Case #4: Within Border Emergency Care

685 This Use case describes an Unscheduled, Local care scenario where the healthcare provider is able to leverage the IPS summary record of the person to be treated where they otherwise would not have such information available.

X.4.2.4.1 Within Border Emergency Care Use Case Description

690 An elderly woman is visiting her new grandchild in another part of the country. During their visit, the woman had a stroke and was taken to the hospital. Her IPS shows a history of heart disease problems, one previous stroke, and the details of her medication. The attending clinician treats the stroke by adjusting her current medication dosages. In accordance with local policy new information about the healthcare visit is made available in an IPS.

X.4.2.4.2 Within Border Emergency Care Process Flow

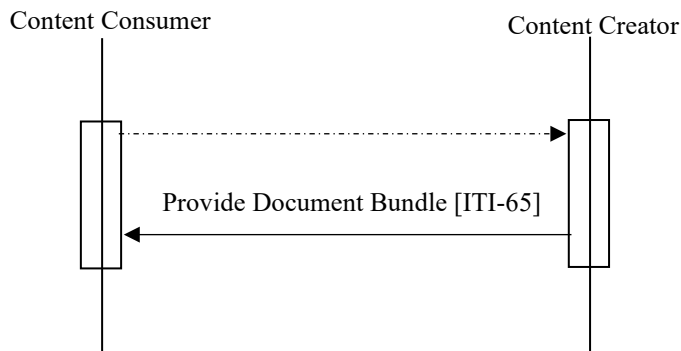


Figure X.4.2.4.2-1: Basic Process Flow in IPS Profile

695 Pre-conditions:

An elderly woman is traveling to another jurisdiction.

Main Flow:

The patient has a stroke.

The patient is sent to a hospital for treatment.

700 The hospital accesses the patient's IPS.

The hospital adjusts the patient's medications based on past medical history to prevent future episodes.

Post-conditions:

The patient is discharged.

705 Information about the healthcare visit is made available in an IPS format using XD*.

X.5 IPS Security Considerations

See [ITI TF-2: Appendix Z.8](#) “Mobile Security Considerations”

710 Consider the ISO 22857:2013 Health informatics — Guidelines on data protection to facilitate trans-border flows of personal health data for trans-border information exchange security considerations.

A minimum security and privacy environment has been established across all participants. There must exist security policies regarding the use of training, agreements, risk management, business continuity and network security that need to be already in place prior to the implementation.

715 EMR systems should be thoughtfully designed so that providers are able to review and verify information before it is imported into their EMR system, and that positive user acknowledgements are made before import, and audit trails are recorded when imports occur.

Imported information should be traceable both to the source [the sharing EMR], and the receiver that accepted it into the EMR system. XDS Affinity domain policies should support policies and procedures for tracing information flows between EMR systems.

720 Because the information being transferred is in XML, it will be common that different EMR systems utilize different transformations to render the contents into human readable form. A Content Creator should make available the transforms used by the sending provider to review the documents, and a Content Consumer must support rendering the information as seen by the sending provider, allowing both providers to see what was sent in its original rendered form.

725 Health Information Exchange: Enabling Document Sharing Health Information Exchange Using IHE Profiles White Paper at <https://profiles.ihe.net/ITI/HIE-Whitepaper/index.html>.

X.6 IPS Cross Profile Considerations

730 The use of the IHE XD* family of transactions is encouraged to support standards-based interoperability between systems acting as the IPS Content Creator and IPS Content Consumer, including exchange of FHIR documents. However, this profile does not require any groupings with ITI XD* actors to facilitate transport of the content document it defines.

735 A Document Source in XDS.b, a Portable Media Creator in XDM, or a Document Source in XDR might be grouped with the IPS Content Creator. A Document Consumer in XDS.b, a Portable Media Importer in XDM, or a Document Recipient in XDR might be grouped with the PCS Content Consumer. A registry/repository-based infrastructure is defined by the IHE Cross Enterprise Document Sharing (XDS.b).

The On-Demand Documents Option of the XDS.b Profile may be considered or required by local implementations to assure summary documents include a composite summary of information for the patient.

740 XDW may be used to define workflow for international patient care management of trans border patient care using Cross-Enterprise Document Workflow Content Profile to manage and track the tasks related to patient-centric workflows.

745 A reliable messaging-based infrastructure is defined by the IHE Cross Enterprise Document Reliable Interchange (XDR) Profile. A Document Source in XDR might be grouped with the IPS Content Creator. A Document Recipient in XDR might be grouped with the IPS Content Consumer.

Detailed descriptions of these transactions can be found in the IHE IT Infrastructure Technical Framework.

Appendices to Volume 1

750 None

755

Volume 2 – Transactions

No new transactions

Volume 3 – Content Modules

760 5 IHE Namespaces, Concept Domains and Vocabularies

5.1 IHE Patient Care Coordination Namespaces

The Patient Care Coordination registry of OIDs is located at https://wiki.ihe.net/index.php/PCC_Vocabulary_Registry_and_Data_Dictionary

Additions to the Patient Care Coordination OID Registry are:

765 No new OIDs

5.2 IHE Patient Care Coordination Concept Domains

For a listing of the PCC Concept Domains see: (not yet listed on the IHE Wiki)

conceptDomain	conceptDomainName	Description
2.16.840.1.113883.6.96	SNOMED-CT	SNOMED Controlled Terminology
2.16.840.1.113883.6.1	LOINC	Logical Observation Identifier Names and Codes
2.16.840.1.113883.6.900	ICD10	International Classification of Diseases, Clinical Modifiers, Version 10

770 5.3 IHE Patient Care Coordination Format Codes and Vocabularies

5.3.1 IHE Format Codes

Profile	Format Code	Media Type	Template ID
International Patient Summary (IPS)	urn:ihe:pcc:ips:2020	text/xml	2.16.840.1.113883.10.22.1.1

775 The template ID is taken from the HL7 IPS and this document is a version of HL7's CDA International Patient Summary. This is an hl7 template that builds on the 2018 hl7 IPS and a collaborative document that reflects the updated items that will be harmonized.

5.3.2 IHEActCode Vocabulary

N/A

5.3.3 IHERoleCode Vocabulary

N/A

780 **6 PCC HL7 V3 CDA Content Modules**

6.1 Conventions

HL7 V3 CDA Conventions are defined in [Appendix E](#) to the *IHE Technical Frameworks General Introduction*.

6.2 Folder Modules

785 NA

6.3 Content Modules

This section defines each IHE Patient Care Coordination Content Modules in detail, specifying the standards used and the information defined.

6.3.1 CDA Document Content Modules

790 **6.3.1.D International Patient Summary (IPS) Document Content Module**

6.3.1.D.1 Format Code

The XSDDocumentEntry format code for this content is **urn:ihe:pcc:ips:2020**.

6.3.1.D.2 Parent Template

N/A

795 **6.3.1.D.3 Referenced Standards**

All standards which are referenced in this document are listed below with their common abbreviation, full title, and link to the standard.

Table 6.3.1.D.3-1: International Patient Summary - Referenced Standards

Abbreviation	Title	URL
EN 17269	Health informatics - Health informatics - The International Patient Summary	https://www.ehealth-standards.eu
HL7 IPS CDA	HL7 CDA R2 Implementation Guide International Patient Summary STU Release 1	https://www.hl7.org/implement/standards/product_brief.cfm?product_id=483
FHIR	HL7 FHIR standard Release 4	http://www.hl7.org/fhir/R4/index.htm
FHIR-ODH	HL7 FHIR Profile: Occupational Data for Health (ODH)	http://hl7.org/fhir/us/odh/STU1.3/ (See Note 1)
FHIR-IPS	HL7 FHIR International Patient Summary Implementation Guide	http://hl7.org/fhir/uv/ips/STU1.1/
ISO/DIS 27269	ISO/DIS 27269 Health informatics — The international patient summary	https://www.iso.org/standard/79491.html

Abbreviation	Title	URL
SNOMED CT	SNOMED International	http://www.snomed.org/snomed-ct/get-snomed-ct
UCUM	Unified Codes for Units of Measures, Regenstrief Institute, Inc. and the UCUM Organization	http://unitsofmeasure.org/trac/wiki/TermsOfUse
ATC	Anatomical Therapeutic Chemical classification system World Health Organization (WHO) Collaborating Centre for Drug Statistics Methodology	-
ISO 3166 Country Code	International Organization for Standardization (ISO)	-
EDQM Standard Terms	European Directorate for the Quality of Medicines	-
NEMA	National Electrical Manufacturers Association	-
ISCO	International Standard Classification of Occupations	https://www.ilo.org/global/industries-and-sectors/lang--en/index.htm
ILO	International Labour Organization Industry Thesaurus	https://metadata.ilo.org/thesaurus.html

800

Note 1: While this referenced standard is US Realm, this profile includes modified resources that replace the USCore Patient with IPS Patient and modifies references to US specific value sets to be included as examples rather than required.

6.3.1.D.4 Data Element Requirement Mappings to CDA

This section identifies the mapping of data between referenced standards into the IPS CDA implementation guide.

805

Table 6.3.1.D.4-1: IPS – Data Element Requirement Mappings to CDA

ISO/EN 17269 Data Elements	IPS CDA
Patient Attributes	/ClinicalDocument/[IPS CDA recordTarget]
Patient's name	/ClinicalDocument/[IPS CDA recordTarget]/patientRole/patient/name
Patient's address and telecom	see below
Address	/ClinicalDocument/[IPS CDA recordTarget]/patientRole/addr
Telecoms	/ClinicalDocument/[IPS CDA recordTarget]/patientRole/telecom
Administrative gender	/ClinicalDocument/[IPS CDA recordTarget]/patientRole/patient/administrativeGenderCode
Date of birth	/ClinicalDocument/[IPS CDA recordTarget]/patientRole/patient/birthTime
Patient's preferred language	/ClinicalDocument/[IPS CDA recordTarget]/patientRole/patient/languageCommunication/languageCode
Healthcare related identifiers	see below
Patient identifier	/ClinicalDocument/[IPS CDA recordTarget]/patientRole/id
Insurance information	see below
Insurance identifier	/ClinicalDocument/[IPS CDA recordTarget]/patientRole/id

IHE Patient Care Coordination Technical Framework Supplement – International Patient Summary (IPS)

ISO/EN 17269 Data Elements	IPS CDA
Patient's Address Book	see below
Preferred healthcare providers	/ClinicalDocument/[IPS Patient Contacts]/code
Healthcare provider (person)	/ClinicalDocument/[IPS Patient Contacts]/associatedEntity/associatedPerson
Healthcare provider Name	/ClinicalDocument/[IPS Patient Contacts]/associatedEntity/associatedPerson/name
Healthcare provider Role	/ClinicalDocument/[IPS Patient Contacts]/associatedEntity/code
Healthcare provider Telecoms	/ClinicalDocument/[IPS Patient Contacts]/associatedEntity/telecom
Healthcare provider (organization)	/ClinicalDocument/[IPS Patient Contacts]/associatedEntity/scopingOrganization
Organization's name	/ClinicalDocument/[IPS Patient Contacts]/associatedEntity/scopingOrganization/name
Organization's Telecoms	/ClinicalDocument/[IPS Patient Contacts]/associatedEntity/telecom
Other's address details	see below
Addressee	/ClinicalDocument/[IPS Patient Contacts]/associatedEntity/associatedPerson /ClinicalDocument/[IPS CDA recordTarget]/patientRole/guardian
Addressee Role	/ClinicalDocument/[IPS Patient Contacts]/associatedEntity/code /ClinicalDocument/[IPS CDA recordTarget]/patientRole/guardian
Addressee Name	/ClinicalDocument/[IPS Patient Contacts]/associatedEntity/associatedPerson/name /ClinicalDocument/[IPS CDA recordTarget]/patientRole/guardianPerson/name
Addressee Address	/ClinicalDocument/[IPS Patient Contacts]/associatedEntity/addr /ClinicalDocument/[IPS CDA recordTarget]/patientRole/guardian/addr
Addressee Telecoms	/ClinicalDocument/[IPS Patient Contacts]/associatedEntity/telecom /ClinicalDocument/[IPS CDA recordTarget]/patientRole/guardian/telecom
Advance Directives Section	/ClinicalDocument/[IPS Advance Directives Section]
Advance Directives	/ClinicalDocument/[IPS Advance Directives Section]
Advance Directive	/ClinicalDocument/[IPS Advance Directives Section]/entry/[IPS Advance Directive Organizer] /ClinicalDocument/[IPS Advance Directives Section]
Person Authorizing Directive	/ClinicalDocument/[IPS Advance Directives Section]/entry/[IPS Advance Directive Organizer]/component/[IPS Advance Directive Observation]/participant /ClinicalDocument/[IPS Advance Directives Section]/entry/[IPS Advance Directive Organizer]/component/[IPS Advance Directive Observation]/author
Person Authorizing Name	/ClinicalDocument/[IPS Advance Directives Section]/entry/[IPS Advance Directive Organizer]/component/[IPS Advance Directive Observation]/participant/participantRole/playingEntity/name /ClinicalDocument/[IPS Advance Directives Section]/entry/[IPS Advance Directive Organizer]/component/[IPS Advance Directive Observation]/author/assignedAuthor/assignedPerson/name

IHE Patient Care Coordination Technical Framework Supplement – International Patient Summary (IPS)

ISO/EN 17269 Data Elements	IPS CDA
Person Authorizing Role	/ClinicalDocument/[IPS Advance Directives Section]/entry/[IPS Advance Directive Organizer]/component/[IPS Advance Directive Observation]/participant/participantRole/code /ClinicalDocument/[IPS Advance Directives Section]/entry/[IPS Advance Directive Organizer]/component/[IPS Advance Directive Observation]/author/assignedAuthor/code
Person Authorizing Telecoms	/ClinicalDocument/[IPS Advance Directives Section]/entry/[IPS Advance Directive Organizer]/component/[IPS Advance Directive Observation]/participant/participantRole/telecom /ClinicalDocument/[IPS Advance Directives Section]/entry/[IPS Advance Directive Organizer]/component/[IPS Advance Directive Observation]/author/assignedAuthor/telecom
Directive Category	/ClinicalDocument/[IPS Advance Directives Section]/entry/[IPS Advance Directive Organizer]/component/[IPS Advance Directive Observation]/code
Directive Description	/ClinicalDocument/[IPS Advance Directives Section]/text
Reference to Legal Document	/ClinicalDocument/[IPS Advance Directives Section]/entry/[IPS Advance Directive Organizer]/component/[IPS Advance Directive Observation]/reference/externalDocument
Allergies and Intolerances	/ClinicalDocument/[IPS Allergies and Intolerances Section]
Allergies/Intolerances content status	/ClinicalDocument/[IPS Allergies and Intolerances Section]/entry/[IPS Allergy and Intolerance Concern]/entryRelationship/[IPS Allergy or Intolerance]/observation/code
Allergies and Intolerances	/ClinicalDocument/[IPS Allergies and Intolerances Section]/entry/[IPS Allergy and Intolerance Concern]/entryRelationship/[IPS Allergy or Intolerance]
Allergy/Intolerance	/ClinicalDocument/[IPS Allergies and Intolerances Section]/entry/[IPS Allergy and Intolerance Concern]/entryRelationship/[IPS Allergy or Intolerance]
Allergy/Intolerance description	/ClinicalDocument/[IPS Allergies and Intolerances Section]/text
Allergy/Intolerance Clinical status	/ClinicalDocument/[IPS Allergies and Intolerances Section]/entry/[IPS Allergy and Intolerance Concern]/entryRelationship/[IPS Allergy or Intolerance]/entryRelationship/[IPS Allergy Status Observation]/value
Allergy/Intolerance Onset Date	/ClinicalDocument/[IPS Allergies and Intolerances Section]/entry/[IPS Allergy and Intolerance Concern]/entryRelationship/[IPS Allergy or Intolerance]/observation/effectiveTime/low
Allergy/Intolerance End Date	/ClinicalDocument/[IPS Allergies and Intolerances Section]/entry/[IPS Allergy and Intolerance Concern]/entryRelationship/[IPS Allergy or Intolerance]/observation/effectiveTime/high
Allergy/Intolerance Criticality	/ClinicalDocument/[IPS Allergies and Intolerances Section]/entry/[IPS Allergy and Intolerance Concern]/entryRelationship/[IPS Allergy or Intolerance]/entryRelationship/[IPS Criticality Observation]
Allergy/Intolerance Certainty	/ClinicalDocument/[IPS Allergies and Intolerances Section]/entry/[IPS Allergy and Intolerance Concern]/entryRelationship/[IPS Allergy or Intolerance]/entryRelationship/[IPS Allergy Certainty Observation]
Allergy/Intolerance Type of propensity	/ClinicalDocument/[IPS Allergies and Intolerances Section]/entry/[IPS Allergy and Intolerance Concern]/entryRelationship/[IPS Allergy or Intolerance]/observation/code
Allergy/Intolerance Diagnosis	/ClinicalDocument/[IPS Allergies and Intolerances Section]/entry/[IPS Allergy and Intolerance Concern]/entryRelationship/[IPS Allergy or Intolerance]/value

IHE Patient Care Coordination Technical Framework Supplement – International Patient Summary (IPS)

ISO/EN 17269 Data Elements	IPS CDA
Allergy/Intolerance Reaction	/ClinicalDocument/[IPS Allergies and Intolerances Section]/entry/[IPS Allergy and Intolerance Concern]/entryRelationship/[IPS Allergy or Intolerance]/entryRelationship/[IPS Reaction Manifestation]
Allergy/Intolerance Manifestation of the reaction	/ClinicalDocument/[IPS Allergies and Intolerances Section]/entry/[IPS Allergy and Intolerance Concern]/entryRelationship/[IPS Allergy or Intolerance]/entryRelationship/[IPS Reaction Manifestation]/value
Allergy/Intolerance Severity	/ClinicalDocument/[IPS Allergies and Intolerances Section]/entry/[IPS Allergy and Intolerance Concern]/entryRelationship/[IPS Allergy or Intolerance]/entryRelationship/[IPS Reaction Manifestation]/entryRelationship/[IPS Severity Observation]
Allergy/Intolerance Agent	/ClinicalDocument/[IPS Allergies and Intolerances Section]/entry/[IPS Allergy and Intolerance Concern]/entryRelationship/[IPS Allergy or Intolerance]/participant
Allergy/Intolerance Agent code	/ClinicalDocument/[IPS Allergies and Intolerances Section]/entry/[IPS Allergy and Intolerance Concern]/entryRelationship/[IPS Allergy or Intolerance]/participant/participantRole/playingEntity/code
Allergy/Intolerance Category	/ClinicalDocument/[IPS Allergies and Intolerances Section]/entry/[IPS Allergy and Intolerance Concern]/entryRelationship/[IPS Allergy or Intolerance]/participant/participantRole/playingEntity/code
Functional Status Section	/ClinicalDocument/[IPS Functional Status Section]
Disabilities	/ClinicalDocument/[IPS Functional Status Section]
Disability	/ClinicalDocument/[IPS Functional Status Section]
Disability Description	/ClinicalDocument/[IPS Functional Status Section]/text
Disability Code	/ClinicalDocument/[IPS Functional Status Section]/entry/observation/value
Onset Date	/ClinicalDocument/[IPS Functional Status Section]/entry/observation/effectiveTime/low
Functional assessments (determines autonomy)	/ClinicalDocument/[IPS Functional Status Section]
Functional Assessment (type performed)	/ClinicalDocument/[IPS Functional Status Section]
Functional Assessment description	/ClinicalDocument/[IPS Functional Status Section]/text
Date of assessment	/ClinicalDocument/[IPS Functional Status Section]/entry/[IPS Survey Panel]/effectiveTime /ClinicalDocument/[IPS Functional Status Section]/entry/[IPS Survey Panel]/component/[IPS Survey Observation]/effectiveTime
Functional Assessment Type	/ClinicalDocument/[IPS Functional Status Section]/entry/[IPS Survey Panel]/code /ClinicalDocument/[IPS Functional Status Section]/entry/[IPS Survey Panel]/component/[IPS Survey Observation]/code
Functional Assessment Result	/ClinicalDocument/[IPS Functional Status Section]/entry/[IPS Survey Panel]/component/[IPS Survey Observation]/value
Functional Assessment	/ClinicalDocument/[IPS Functional Status Section]/entry/[IPS Survey Panel]/component/[IPS Survey Observation]
History of Past Problems	/ClinicalDocument/[IPS History of Past Illness Section]

IHE Patient Care Coordination Technical Framework Supplement – International Patient Summary (IPS)

ISO/EN 17269 Data Elements	IPS CDA
Past problems	/ClinicalDocument/[IPS History of Past Illness Section]/entry/[IPS Problem Concern Entry]
Past problem	/ClinicalDocument/[IPS History of Past Illness Section]/entry/[IPS Problem Concern Entry]
Problem type	/ClinicalDocument/[IPS History of Past Illness Section]/entry/[IPS Problem Concern Entry]/entryRelationship/[IPS Problem Entry]/code
Problem Description	/ClinicalDocument/[IPS History of Past Illness Section]/text
Problem Diagnosis	/ClinicalDocument/[IPS History of Past Illness Section]/entry/[IPS Problem Concern Entry]/entryRelationship/[IPS Problem Entry]/value
Problem Severity	/ClinicalDocument/[IPS History of Past Illness Section]/entry/[IPS Problem Concern Entry]/entryRelationship/[IPS Problem Entry]/entryRelationship/[IPS Severity Observation]
Problem Onset Date	/ClinicalDocument/[IPS History of Past Illness Section]/entry/[IPS Problem Concern Entry]/entryRelationship/[IPS Problem Entry]/effectiveTime/low
Problem Status	/ClinicalDocument/[IPS History of Past Illness Section]/entry/[IPS Problem Concern Entry]/entryRelationship/[IPS Problem Entry]/entryRelationship/[IPS Problem Status Observation]
Date Problem Resolved	/ClinicalDocument/[IPS History of Past Illness Section]/entry/[IPS Problem Concern Entry]/entryRelationship/[IPS Problem Entry]/effectiveTime/high
Specialist Contact for problem	Not explicitly specified (see open issues #41)
History of Pregnancy Section	/ClinicalDocument/[IPS History of Pregnancy Section]
Current pregnancy status	/ClinicalDocument/[IPS History of Pregnancy Section]/entry/[IPS Pregnancy Status Observation]
Pregnancy description	/ClinicalDocument/[IPS History of Pregnancy Section]/text
Pregnancy details	see below
Date of observation	/ClinicalDocument/[IPS History of Pregnancy Section]/entry/[IPS Pregnancy Status Observation]/effectiveTime
Pregnancy state	/ClinicalDocument/[IPS History of Pregnancy Section]/entry/[IPS Pregnancy Status Observation]/value
Expected delivery date	/ClinicalDocument/[IPS History of Pregnancy Section]/entry/[IPS Pregnancy Status Observation]/entryRelationship/[IPS Pregnancy Expected Delivery Date Observation]/value
Specialist contact	Not explicitly specified (see open issues #41)
Previous history of pregnancies	/ClinicalDocument/[IPS History of Pregnancy Section]
Previous pregnancies status	/ClinicalDocument/[IPS History of Pregnancy Section]/entry/[IPS Pregnancy Observation]/value
Previous pregnancies description	/ClinicalDocument/[IPS History of Pregnancy Section]/text
Previous pregnancies	/ClinicalDocument/[IPS History of Pregnancy Section]/entry/[IPS Pregnancy Observation]
Previous pregnancy details	/ClinicalDocument/[IPS History of Pregnancy Section]/entry/[IPS Pregnancy Observation]
Outcome date	/ClinicalDocument/[IPS History of Pregnancy Section]/entry/[IPS Pregnancy Observation]/effectiveTime

IHE Patient Care Coordination Technical Framework Supplement – International Patient Summary (IPS)

ISO/EN 17269 Data Elements	IPS CDA
Outcome	/ClinicalDocument/[IPS History of Pregnancy Section]/entry/[IPS Pregnancy Observation]/value
Specialist contact	Not explicitly specified (see open issues #41)
Summary metric	/ClinicalDocument/[IPS History of Pregnancy Section]/entry/[IPS Pregnancy Outcome Observation]
History of Procedures	/ClinicalDocument/[IPS History of Procedures Section]
Procedures content status	/ClinicalDocument/[IPS History of Procedures Section]/entry/[IPS Procedure Entry]/code
Procedures	/ClinicalDocument/[IPS History of Procedures Section]/entry/[IPS Procedure Entry]
Procedure	/ClinicalDocument/[IPS History of Procedures Section]/entry/[IPS Procedure Entry]
Procedure code	/ClinicalDocument/[IPS History of Procedures Section]/entry/[IPS Procedure Entry]/code
Procedure description	/ClinicalDocument/[IPS History of Procedures Section]/text
Body site	/ClinicalDocument/[IPS History of Procedures Section]/entry/[IPS Procedure Entry]/targetSiteCode
Procedure date	/ClinicalDocument/[IPS History of Procedures Section]/entry/[IPS Procedure Entry]/effectiveTime
Immunizations	/ClinicalDocument/[IPS Immunizations Section]
Immunizations content status	/ClinicalDocument/[IPS Immunizations Section]/entry/[IPS Immunization]/consumable/[IPS Immunization Medication Information]/manufacturedProduct/manufacturedMaterial/code
Immunizations	/ClinicalDocument/[IPS Immunizations Section]/entry/[IPS Immunization]
Immunization	/ClinicalDocument/[IPS Immunizations Section]/entry/[IPS Immunization]
Vaccine for type of disease	/ClinicalDocument/[IPS Immunizations Section]/entry/[IPS Immunization]/consumable/[IPS Immunization Medication Information]/manufacturedProduct/manufacturedMaterial/code
Target diseases	
Target disease	
Date of immunization	/ClinicalDocument/[IPS Immunizations Section]/entry/[IPS Immunization]/effectiveTime
Product administered	/ClinicalDocument/[IPS Immunizations Section]/entry/[IPS Immunization]/consumable/[IPS Immunization Medication Information]/manufacturedProduct/manufacturedMaterial/code
Brand name	/ClinicalDocument/[IPS Immunizations Section]/entry/[IPS Immunization]/consumable/[IPS Immunization Medication Information]/manufacturedProduct/manufacturedMaterial/code
Product administration process	see below
Performer	/ClinicalDocument/[IPS Immunizations Section]/entry/[IPS Immunization]/performer
Route of administration	/ClinicalDocument/[IPS Immunizations Section]/entry/[IPS Immunization]/routeCode

IHE Patient Care Coordination Technical Framework Supplement – International Patient Summary (IPS)

ISO/EN 17269 Data Elements	IPS CDA
Medical Devices	/ClinicalDocument/[IPS Medical Devices Section]
Device content status	/ClinicalDocument/[IPS Medical Devices Section]/entry/[IPS Medical Device]/participant/participantRole/playingDevice/code
Devices	/ClinicalDocument/[IPS Medical Devices Section]/entry/[IPS Medical Device]
Device	/ClinicalDocument/[IPS Medical Devices Section]/entry/[IPS Medical Device]
Device type	/ClinicalDocument/[IPS Medical Devices Section]/entry/[IPS Medical Device]/participant/participantRole/playingDevice/code
Device identifier	/ClinicalDocument/[IPS Medical Devices Section]/entry/[IPS Medical Device]/participant/participantRole/id
Use start date	/ClinicalDocument/[IPS Medical Devices Section]/entry/[IPS Medical Device]/effectiveTime/low
Use end date	/ClinicalDocument/[IPS Medical Devices Section]/entry/[IPS Medical Device]/effectiveTime/high
Medication Summary	/ClinicalDocument/[IPS Medication Summary Section]
Medication summary content status	/ClinicalDocument/[IPS Medication Summary Section]/entry/[IPS Medication Statement]/code
Medications	/ClinicalDocument/[IPS Medication Summary Section]/entry/[IPS Medication Statement]
Medication	/ClinicalDocument/[IPS Medication Summary Section]/entry/[IPS Medication Statement]
Reason	/ClinicalDocument/[IPS Medication Summary Section]/entry/[IPS Medication Statement]/entryRelationship/[Indication (V2)]
Medicinal product	/ClinicalDocument/[IPS Medication Summary Section]/entry/[IPS Medication Statement]/consumable/[IPS Medication Information]
Product code	/ClinicalDocument/[IPS Medication Summary Section]/entry/[IPS Medication Statement]/consumable/[IPS Medication Information]/manufacturedMaterial/code
Product common name (and strength)	/ClinicalDocument/[IPS Medication Summary Section]/entry/[IPS Medication Statement]/consumable/[IPS Medication Information]/manufacturedMaterial/asSpecializedKind/name
Pharmaceutical dose form	/ClinicalDocument/[IPS Medication Summary Section]/entry/[IPS Medication Statement]/consumable/[IPS Medication Information]/manufacturedMaterial/formCode
Brand name	/ClinicalDocument/[IPS Medication Summary Section]/entry/[IPS Medication Statement]/consumable/[IPS Medication Information]/manufacturedMaterial/asContent/containerPackagedProduct/name
Active ingredients	/ClinicalDocument/[IPS Medication Summary Section]/entry/[IPS Medication Statement]/consumable/[IPS Medication Information]/manufacturedMaterial/ingredient
Active ingredient	/ClinicalDocument/[IPS Medication Summary Section]/entry/[IPS Medication Statement]/consumable/[IPS Medication Information]/manufacturedMaterial/ingredient

IHE Patient Care Coordination Technical Framework Supplement – International Patient Summary (IPS)

ISO/EN 17269 Data Elements	IPS CDA
Substance code	/ClinicalDocument/[IPS Medication Summary Section]/entry/[IPS Medication Statement]/consumable/[IPS Medication Information]/manufacturedMaterial/ingredient/ingredientSubstance/code
Strength	/ClinicalDocument/[IPS Medication Summary Section]/entry/[IPS Medication Statement]/consumable/[IPS Medication Information]/manufacturedMaterial/ingredient/quantity
Administration instruction	see below
Instruction	/ClinicalDocument/[IPS Medication Summary Section]/text
Period of medication use	/ClinicalDocument/[IPS Medication Summary Section]/entry/[IPS Medication Statement]/[UV Use Period]
Route of administration	/ClinicalDocument/[IPS Medication Summary Section]/entry/[IPS Medication Statement]/routeCode
Dose instruction	/ClinicalDocument/[IPS Medication Summary Section]/entry/[IPS Medication Statement]/entryRelationship/[IPS Subordinate SubstanceAdministration]
No. of units per intake	/ClinicalDocument/[IPS Medication Summary Section]/entry/[IPS Medication Statement]/entryRelationship/[IPS Subordinate SubstanceAdministration]/doseQuantity
Frequency of intake	/ClinicalDocument/[IPS Medication Summary Section]/entry/[IPS Medication Statement]/entryRelationship/[IPS Subordinate SubstanceAdministration]/effectiveTime
Plan of Care	/ClinicalDocument/[IPS Plan of Care Section]
Plans	/ClinicalDocument/[IPS Plan of Care Section]
Plan	/ClinicalDocument/[IPS Plan of Care Section]
Plan type	Not explicitly specified
Plan date	Not explicitly specified
Plan description	/ClinicalDocument/[IPS Plan of Care Section].text
Recommendations (Core Care Plan)	/ClinicalDocument/[IPS Plan of Care Section]/entry
Recommendation	/ClinicalDocument/[IPS Plan of Care Section]/entry/[...] (several templates)
Recommendation for treatment	depends on the template used
Given recommendation date	depends on the template used
Applicable date	depends on the template used
Extensive Plan	Not explicitly specified
Problems	/ClinicalDocument/[IPS Problems Section]
Problems content status	/ClinicalDocument/[IPS Problems Section]/entry/[IPS Problem Concern Entry]/entryRelationship/[IPS Problem Entry]/code
Problems	/ClinicalDocument/[IPS Problems Section]/entry/[IPS Problem Concern Entry]
Problem	/ClinicalDocument/[IPS Problems Section]/entry/[IPS Problem Concern Entry]
Problem type	/ClinicalDocument/[IPS Problems Section]/entry/[IPS Problem Concern Entry]/entryRelationship/[IPS Problem Entry]/code
Problem description	/ClinicalDocument/[IPS Problems Section]/text
Diagnosis	/ClinicalDocument/[IPS Problems Section]/entry/[IPS Problem Concern Entry]/entryRelationship/[IPS Problem Entry]/value

IHE Patient Care Coordination Technical Framework Supplement – International Patient Summary (IPS)

ISO/EN 17269 Data Elements	IPS CDA
Severity	/ClinicalDocument/[IPS Problems Section]/entry/[IPS Problem Concern Entry]/entryRelationship/[IPS Problem Entry]/entryRelationship/[IPS Severity Observation]/value
Onset date	/ClinicalDocument/[IPS Problems Section]/entry/[IPS Problem Concern Entry]/entryRelationship/[IPS Problem Entry]/effectiveTime/low
Problem status	/ClinicalDocument/[IPS Problems Section]/entry/[IPS Problem Concern Entry]/entryRelationship/[IPS Problem Entry]/entryRelationship/[IPS Problem Status Observation]/value
Specialist contact	Not explicitly specified (see open issues #41)
Results	/ClinicalDocument/[IPS Results Section]
Observation results	/ClinicalDocument/[IPS Results Section]/entry/[IPS Result Organizer] /ClinicalDocument/[IPS Results Section]/entry/[IPS Result Organizer]/[...] (several observation templates)
Observation result	/ClinicalDocument/[IPS Results Section]/entry/[IPS Result Organizer] /ClinicalDocument/[IPS Results Section]/entry/[IPS Result Organizer]/[...] (several observation templates)
Date of observation	/ClinicalDocument/[IPS Results Section]/entry/[IPS Result Organizer]/effectiveTime /ClinicalDocument/[IPS Results Section]/entry/[IPS Result Organizer]/component/observation/effectiveTime
Observation type	/ClinicalDocument/[IPS Results Section]/entry/[IPS Result Organizer]/code /ClinicalDocument/[IPS Results Section]/entry/[IPS Result Organizer]/component/observation/code
Result description	/ClinicalDocument/[IPS Results Section]/text
Value	/ClinicalDocument/[IPS Results Section]/entry/[IPS Result Organizer]/component/observation/value
Observation result	/ClinicalDocument/[IPS Results Section]/entry/[IPS Result Organizer]/component/observation
Performer	/ClinicalDocument/[IPS Results Section]/entry/[IPS Result Organizer]/performer /ClinicalDocument/[IPS Results Section]/entry/[IPS Result Organizer]/component/observation/performer
Observer	/ClinicalDocument/[IPS Results Section]/entry/[IPS Result Organizer]/author
Social History	/ClinicalDocument/[IPS Social History Section]
Life style factors	/ClinicalDocument/[IPS Social History Section]/entry
Life style factor	/ClinicalDocument/[IPS Social History Section]/entry/[...] (several observation templates)
Life style factor description	/ClinicalDocument/[IPS Social History Section]/text
Life style factor details	/ClinicalDocument/[IPS Social History Section]/entry/observation/value
Reference date range	/ClinicalDocument/[IPS Social History Section]/entry/observation/effectiveTime
Vital Signs	/ClinicalDocument/[IPS Vital Signs Section]
Vital signs	/ClinicalDocument/[IPS Vital Signs Section]/entry/[IPS Vital Signs Organizer]

ISO/EN 17269 Data Elements	IPS CDA
Vital sign	/ClinicalDocument/[IPS Vital Signs Section]/entry/[IPS Vital Signs Organizer]/component/[IPS Vital Signs Observation]
Date of observation	/ClinicalDocument/[IPS Vital Signs Section]/entry/[IPS Vital Signs Organizer]/component/[IPS Vital Signs Observation]/effectiveTime
Observation type	/ClinicalDocument/[IPS Vital Signs Section]/entry/[IPS Vital Signs Organizer]/component/[IPS Vital Signs Observation]/code
Result description	/ClinicalDocument/[IPS Vital Signs Section].text
Value	/ClinicalDocument/[IPS Vital Signs Section]/entry/[IPS Vital Signs Organizer]/component/[IPS Vital Signs Observation]/value
Vital sign	/ClinicalDocument/[IPS Vital Signs Section]/entry/[IPS Vital Signs Organizer]/component/[IPS Vital Signs Observation]
Cross Border	see below
Country of affiliation	/ClinicalDocument/[IPS CDA recordTarget]/patientRole/addr/country
Country specific requirements	N/A
Provenance Metadata	see below
Asserter (source of information)	it depends on the context of use
Date of IPS Document creation	/ClinicalDocument/effectiveTime
Language of document	/ClinicalDocument/languageCode
Date of last update of IPS content	/ClinicalDocument/documentationOf/serviceEvent/effectiveTime/high
Generation of IPS content	see below
Nature of the IPS	In the current version this information is inferred by a set of IPS data (including author,attester)
Healthcare providers	see below
Authoring healthcare provider	/ClinicalDocument/[IPS CDA author]
Legitimacy	see below
Legal authenticator	/ClinicalDocument/[IPS CDA legalAuthenticator]

6.3.1.D.5 International Patient Summary (IPS) Document Content Module Specification

810 This section specifies the header, section, and entry content modules which comprise the International Patient Summary (IPS) Document Content Module, using the Template ID as the key identifier.

Sections that are used according to the definitions in other specifications are identified with the relevant specification document. Additional constraints on vocabulary value sets, not specifically constrained within the section template, are also identified.

815 The following document is a version of HL7’s CDA International Patient Summary. This is an hl7 template that builds on the 2018 hl7 IPS and a collaborative document that reflects the updated items that will be harmonized. The Opt and Card column was informed by CEN/ISO

820

IPS Standard and HL7 and the terminology used are HL7 terms. The optionality terminology used in this profile are taken directly from the CEN IPS Standard. Alignment between CEN/HL7 conformance and IHE conformance is (O = O, R = RE/R2, M = R, C = C, F = fixed value, NP = Not present). According to the CEN/ISO IPS Standard CEN Conformance is obtained by the minimum of supporting the Section and Text. If structured data is provided they should adhere to the element requirements. Any Reference to R [0..1] or R[0..*] should be seen as SHOULD requirements.

825

Value	Description	Comment
M	Mandatory (exceptions not allowed)	<p>A mandatory element shall always be present and where applicable, shall be valorised with valid values. No exceptions or empty/null values are allowed in this case.</p> <p>If it refers to a composite element (e.g., a section, a list; a label concept) the presence of the included elements is determined by the conformance rules of these sub-elements.</p> <p>Recipient shall understand mandatory elements.</p> <p>If a ‘mandatory’ element is missing then the document is no longer a conformant IPS.</p> <p>A derived model (that includes also implementable specifications) shall maintain an equivalent conformance strength.</p>
R	Required (exceptions allowed)	<p>A required element shall always be present and where applicable, should be valorised with valid values. Exceptions or empty/null values are allowed in this case.</p> <p>If it refers to a composite element (e.g., a section, a list; a label concept, a complex data type) the presence of the included elements is determined by the conformance rules of these sub-elements.</p> <p>Recipient shall understand required elements.</p> <p>If a ‘required’ element is missing then the document is no longer a conformant IPS.</p> <p>A derived model (that includes also implementable specifications) shall maintain an equivalent conformance strength; or may further constrain it (e.g., from ‘R’ to ‘M’).</p>
RE	Required, if known	<p>A “Required if known” element is one that should be provided.</p> <p>If there is information available, the element must be present and where applicable, valorised with valid values.</p> <p>If there is no information available, the element may be omitted, may be left empty, or may be valorised with exceptional or null values depending on the implementation.</p> <p>If it refers to a composite element (e.g., a section, a list, a label concept, a complex data type) the presence of the included elements is determined by the conformance rules of these sub-elements.</p> <p>Recipient shall understand required elements.</p> <p>A derived model (that includes also implementable specifications) shall maintain an equivalent conformance strength; or may further constrain it (e.g., from ‘RK’ to ‘R’).</p>
C	Conditional (has associated condition predicates)	<p>Depending on predicate conditions the element may assume different conformance strengths (e.g., O, R, RK) or not being present.</p> <p>A predicate can be simple (for example: «element A exists»; «attribute b = value1») or complex (for example: «element C exists» AND «the attribute x of element D = value2»).</p> <p>A conditional element may be evaluated on a single condition (if predicate A then ‘Required’ else ‘Optional’) or on multiple conditions (e.g., if predicate A then ‘Required’; if predicate B then ‘Optional’; else ‘Not Present’).</p>

IHE Patient Care Coordination Technical Framework Supplement – International Patient Summary (IPS)

Value	Description	Comment
		<p>The resulting conformance strength (M, R, RK, O, ...) is determined by the conditions.</p> <p>If it refers to a composite element (e.g., a section, a list, a label concept, a complex data type) the presence of the included elements is determined by the combination of the predicate conditions of this element and the conformance rules of its sub-elements. For example:</p> <ol style="list-style-type: none"> 1. no exception is raised if a required sub-element is missing, when the parent is correctly omitted. 2. an exception is raised if a required sub-element is missing, when the parent is present. <p>Derived models or implementable specifications shall maintain an equivalent conformance strength but it is allowed to modify the conformance strength if the predicate condition permits.</p> <p>Recipient shall understand conditional elements, when required. For example, a conditional element that could be optional or not present could be omitted by a derived model and ignored by a recipient. Or, a condition for which a conditional element become required doesn't apply to a jurisdiction, in that case a jurisdictional specification could omit that element and recipient could ignore it.</p> <p>Depending on the conditions, exception is or is not raised if the data are missing.</p>
O	Optional	<p>This data element can be omitted from a derived model, including from implementations.</p> <p>Recipient may ignore optional elements.</p> <p>If it refers to a composite element (e.g., a section, a list, a label concept, a complex data type) the presence of the included elements is determined by the presence of this element and the conformance rules of its sub-elements. For example, no exception is raised if a required sub-element is missing when the parent is omitted.</p> <p>The reason for specifying the optional data elements is to ensure that both sender and recipient use the appropriate semantic interpretation of these elements.</p> <p>No exception is raised if the data are missing.</p>

Table 6.3.1.D.5-1: International Patient Summary (IPS) Document Content Module Specification

Template Name		International Patient Summary (IPS)			
Template ID		International Patient Summary 2.16.840.1.113883.10.22.1.1 HL7			
Parent Template		N/A			
General Description		A minimal, non-exhaustive set of data elements required for the international patient summary (EN 17269).			
Document Code		SHALL be code="60591-5" codeSystem="2.16.840.1.113883.6.1" codeSystemName="LOINC" displayName="Patient Summary"			
Opt and Card	Condition	Header Element or Section Name	Template ID	Specification Document	Vocabulary Constraint
Header Elements					
M [1..*]		author	2.16.840.1.113883.10.22.2.2	HL7 IPS CDA	
M [1..1]		custodian	2.16.840.1.113883.10.22.2.3	HL7 IPS CDA	
M [1..1]		documentationOf	2.16.840.1.113883.10.22.2.6	HL7 IPS CDA	
R [0..1]		legalAuthenticator	2.16.840.1.113883.10.22.2.4	HL7 IPS CDA	
M [1..1]		recordTarget	2.16.840.1.113883.10.22.2.1	HL7 IPS CDA	
R [0..*]		relatedDocument	2.16.840.1.113883.10.22.2.7	HL7 IPS CDA	
R [0..*]		IPS Patient Contacts	2.16.840.1.113883.10.22.2.5	HL7 IPS CDA	
Sections					
O [0..1]		IPS Advance Directives	2.16.840.1.113883.10.22.3.12	PCC IPS 6.3.3.10.S.1	
M [1..1]		IPS Allergies and Intolerances	2.16.840.1.113883.10.22.3.2	HL7 IPS CDA	See Vocabulary Open Issues
O [0..1]		IPS Functional Status	2.16.840.1.113883.10.22.3.8	PCC IPS 6.3.3.10.S.4	
O [0..1]		IPS History of Past Illness	2.16.840.1.113883.10.22.3.7	HL7 IPS CDA	See Vocabulary Open Issues
O [0..1]		IPS History of Pregnancy	2.16.840.1.113883.10.22.3.11	PCC IPS 6.3.3.10.S.2	

IHE Patient Care Coordination Technical Framework Supplement – International Patient Summary (IPS)

R [0..1]		IPS History of Procedures	2.16.840.1.113883.10.22.3.4	HL7 IPS CDA	
R [0..1]		IPS Immunizations	2.16.840.1.113883.10.22.3.5	HL7 IPS CDA	
R [0..1]		IPS Medical Devices	2.16.840.1.113883.10.22.3.6	HL7 IPS CDA	See Vocabulary Open Issues
M [1..1]		IPS Medication Summary	2.16.840.1.113883.10.22.3.1	HL7 IPS CDA	See Vocabulary Open Issues
O [0..1]		IPS Plan of Care	2.16.840.1.113883.10.22.3.9	PCC IPS 6.3.3.10.S.5	
M [1..1]		IPS Problems	2.16.840.1.113883.10.22.3.3	HL7 IPS CDA	See Vocabulary Open Issues
R [0..1]		IPS Results	2.16.840.1.113883.10.22.3.14	HL7 IPS CDA	
O [0..1]		IPS Social History	2.16.840.1.113883.10.22.3.10	PCC IPS 6.3.3.10.S.6	
O [0..1]		IPS Vital Signs	2.16.840.113883.10.22.4.44	PCC IPS 6.3.3.10.S.3	

830 **6.3.2 CDA Header Content Modules**

Not applicable

6.3.3 CDA Section Content Modules

6.3.3.10 CDA Section Content Modules

IMPORTANT NOTE:

835 Per Open Issue #8, the IPS CDA specification constructs will be updated to reflect alignment with CDA updates in HL7.

6.3.3.10.S1 IPS Advance Directives Section Content Module

Table 6.3.3.10.S1-1: IPS Advance Directives Section

Template Name	IPS Advance Directives Section				
Template ID	HL7 2.16.840.1.113883.10.22.3.12 HL7 Version 2020-05-08				
Parent Template	N/A				
General Description	<p>The advance directive section shall contain a narrative description of patient's advance directive. The optional author and informant elements are used when necessary to convey the provenance and authoring of the section content in case it is different from what is announced in the CDA header.</p> <p>Entries for references to consent and advance directive documents when known will be specified by future versions of this template.</p> <p>https://art-decor.org/art-decor/decor-templates--hl7ips-?section=templates&id=2.16.840.1.113883.10.22.3.12&effectiveDate=2020-05-08T16:38:49&language=en-US</p>				
Section Code	<p><code code=' ' codeSystem='2.16.840.1.113883.6.96' codeSystemName='SNOMED CT'/> The <code> element records the type of advance directive. It should use one of the following SNOMED codes in the table below.</p> <p>Code Description Data Type 304251008 Resuscitation BL 52765003 Intubation 225204009 IV Fluid and Support 89666000 CPR 281789004 Antibiotics 78823007 Life Support 61420007 Tube Feedings 116859006 Transfusion of blood product 71388002 Other Directive <value></p>				
Author	May vary				
Informant	May vary				
Subject	current recordTarget				
Opt and Card	Condition	Data Element or Section Name	Template ID	Specification Document	Vocabulary Constraint
Entries					
R [0..*]		IPS Advance Directive Organizer	2.16.840.1.113883.10.22.4.46	6.3.4.E12	

6.3.3.10.S2 IPS History of Pregnancy Section Content Module

840

Table 6.3.3.10.S2-1: IPS History of Pregnancy Section

IHE Patient Care Coordination Technical Framework Supplement – International Patient Summary (IPS)

Template Name	IHE IPS History of Pregnancy Section				
Template ID	HL7 2.16.840.1.113883.10.22.3.11 HL7 Version 2020-05-07				
Parent Template	N/A				
General Description	<p>The history of pregnancy section shall contain information about whether the patient is currently pregnant (optional with the Expected Delivery Date) or not.</p> <p>It may contain addition summarizing information about the outcome of earlier pregnancies.</p> <p>The optional author and informant elements are used when necessary to convey the provenance and authoring of the section content in case it is different from what is announced in the CDA header.</p> <p>https://art-decor.org/art-decor/decor-templates--hl7ips-?section=templates&id=2.16.840.1.113883.10.22.3.11&effectiveDate=2020-05-07T18:46:08&language=en-US</p>				
Section Code	LOINC 10162-6 History of pregnancies Narrative				
Author	May vary				
Informant	May vary				
Subject	current recordTarget				
Opt and Card	Condition	Data Element or Section Name	Template ID	Specification Document	Vocabulary Constraint
Sections					
All HL7 IPS CDA subsections and entries are inherited. The only entries constrained are listed in the entries section below.					
Entries					
R [0..1]		IPS Pregnancy Status Observation	2.16.840.1.113883.10.22.4.27	HL7 IPS CDA	
O [0..*]		IPS Pregnancy Observation	2.16.840.1.113883.10.22.4.36	PCC IPS 6.3.4.E11	

6.3.3.10.S3 IPS Vital Signs Section Content Module

Table 6.3.3.10.S3-1: IPS Coded Vital Signs Section

IHE Patient Care Coordination Technical Framework Supplement – International Patient Summary (IPS)

Template Name		IPS Vital Signs Section			
Template ID		HL7 2.16.840.1.113883.10.22.4.44			
Parent Template		N/A			
General Description		The vital signs section contains coded measurement results of a patient’s vital signs. https://art-decor.org/art-decor/decor-templates--hl7ips-?section=templates&id=2.16.840.1.113883.10.22.3.16&effectiveDate=2020-05-08T19:22:15&language=en-US			
Section Code		8716-3 VITAL SIGNS			
Author		May vary			
Informant		May vary			
Subject		current recordTarget			
Opt & Card	Condition	Data Element or Section Name	Template ID	Specification Document	Vocabulary Constraint
Entries					
R [0..1]		IPS Vital signs Organizer	2.16.840.1.113883.10.22.4.44	6.3.4.E3	

845 **6.3.3.10.S4 IPS Functional Status Section Content Module**

Table 6.3.3.10.S4-1: IPS Functional Status Section

Template Name	IPS Functional Status Section				
Template ID	HL7 2.16.840.1.113883.10.22.3.8 HL7, Version 2020-05-08				
Parent Template	N/A				
General Description	<p>The functional status section shall contain a narrative description of capability of the patient to perform acts of daily living, including possible needs of the patient to be continuously assessed by third parties. The invalidity status may in fact influence decisions about how to administer treatments.</p> <p>The optional author and informant elements are used when necessary to convey the provenance and authoring of the section content in case it is different from what is announced in the CDA header.</p> <p>https://art-decor.org/art-decor/decor-templates--hl7ips-?section=templates&id=2.16.840.1.113883.10.22.3.8&effectiveDate=2020-05-08T19:17:37&language=en-US</p>				
Section Code	LOINC 47420-5 Functional Status Assessment Note				
Author	May vary				
Informant	May vary				
Subject	current recordTarget				
Opt and Card	Condition	Data Element or Section Name	Template ID	Specification Document	Vocabulary Constraint
Subsections					
All HL7 IPS CDA subsections and entries are inherited. The only entries constrained are listed in the entries section below.					
Entries					
R [0..*]		IPS Survey Panel	2.16.840.1.113883.10.22.4.42	PCC IPS 6.3.4.E1	

6.3.3.10.S5 IPS Plan of Care Section Content Module

Table 6.3.3.10.S5-1: IPS Coded Plan of Care Section

Template Name	IPS Plan of Care Section				
Template ID	HL7 2.16.840.1.113883.10.22.3.9 Version 2020-05-08				
Parent Template	N/A				
General Description	<p>Dynamic, personalized plan including identified needed healthcare activity, health objectives and healthcare goals, relating to one or more specified health issues in a healthcare process</p> <p>The care plan section contains a narrative description of the expectations for care including proposals, goals, and order requests for monitoring, tracking, or improving the condition of the patient.</p> <p>The optional author and informant elements are used when necessary to convey the provenance and authoring of the section content in case it is different from what is announced in the CDA header.</p> <p>https://art-decor.org/art-decor/decor-templates--hl7ips-?section=templates&id=2.16.840.1.113883.10.22.3.9&effectiveDate=2020-05-08T18:28:38&language=en-US</p>				
Section Code	18776-5 Plan of Care Note				
Author	May vary				
Informant	May vary				
Subject	current recordTarget				
Opt and Card	Condition	Data Element or Section Name	Template ID	Specification Document	Vocabulary Constraint
Entries					
O [0..*]		IPS Planned Observation	2.16.840.1.113883.10.22.4.41	PCC IPS 6.3.4.E5	
O [0..*]		IPS Planned Procedure	2.16.840.1.113883.10.22.4.38	PCC IPS 6.3.4.E6	
O [0..*]		IPS Planned Encounter	2.16.840.1.113883.10.22.4.40	PCC IPS 6.3.4.E7	
O [0..*]		IPS Planned Immunization	2.16.840.1.113883.10.22.4.47	PCC IPS 6.3.4.E8	
O [0..*]		IPS Planned Act	2.16.840.1.113883.10.22.4.39	PCC IPS 6.3.4.E9	

850

6.3.3.10.S6 IPS Social History Section Content Module

Table 6.3.3.10.S6-1: IPS Social History Section

Template Name	IPS Social History Section				
Template ID	HL7 2.16.840.1.113883.10.22.3.10 Version 2020-05-10				
Parent Template	N/A				
General Description	<p>The social history section contains a description of the person’s Health related “lifestyle factors” or “lifestyle observations” (e.g., smoke habits; alcohol consumption; diets, risky habits.)</p> <p>The optional author and informant elements are used when necessary to convey the provenance and authoring of the section content in case it is different from what is announced in the CDA header.</p> <p>https://art-decor.org/art-decor/decor-templates--hl7ips-?section=templates&id=2.16.840.1.113883.10.22.3.10&effectiveDate=2020-05-10T18:52:32&language=en-US</p>				
Section Code	N/A				
Author	May vary				
Informant	May vary				
Subject	current recordTarget				
Opt and Card	Condition	Data Element or Section Name	Template ID	Specification Document	Vocabulary Constraint
Subsections					
All HL7 IPS CDA subsections and entries are inherited. The only entries constrained are listed in the entries section below.					
Entries					
R [0..*]		IPS Social History Observation	2.16.840.1.113883.10.22.4.48	6.3.4.E14	

6.3.4 CDA Entry Content Modules

855 6.3.4.E1 IPS Survey Panel

A survey panel collects related survey observations.

The full details are located: <https://art-decor.org/art-decor/decor-templates--hl7ips-?section=templates&id=2.16.840.1.113883.10.22.4.42&effectiveDate=2020-05-08T19:02:26&language=en-US>

- 860
- 1) SHALL contain exactly one [1..1] @classCode="CLUSTER"
 - 2) SHALL contain exactly one [1..1] @moodCode="EVN"
 - 3) SHALL contain exactly one [1..1] templateId="2.16.840.1.113883.10.22.4.42"

- 4) SHOULD contain [0..*] id
- 5) SHALL contain exactly one [1..1] code
- 865 6) SHALL contain exactly one [1..1] statusCode="completed"
- 7) SHOULD contain zero to one [0..1] effectiveTime
- 8) SHALL contain at least one or more [1..*] component
 - a. SHALL contain exactly one or more [1..*] IPS Survey Observation (2.16.840.1.113883.10.22.4.43)

870 **6.3.4.E2 IPS Survey Observation**

This clinical statement represents the IPS Survey Observation.

The full details are located: <https://art-decor.org/art-decor/decor-templates--hl7ips-?section=templates&id=2.16.840.1.113883.10.22.4.43&effectiveDate=2020-05-08T19:05:11&language=en-US>

- 875 1) SHALL contain exactly one [1..1] @classCode="CLUSTER"
- 2) SHALL contain exactly one [1..1] @moodCode="EVN"
- 3) SHALL contain exactly one [1..1] templateId
 - a. SHALL contain exactly one [1..1] @root="2.16.840.1.113883.10.22.4.43"
- 4) SHALL contain exactly one [1..1] code
- 880 5) SHALL contain exactly one or more [1..*] value, example ValueSet CoreProblemListDisordersUvIps urn:oid:2.16.840.1.113883.11.22.16 DYNAMIC
- 6) CAN contain exactly zero or more [0..*] interpretationCode
- 7) CAN contain methodCode
- 8) CAN contain targetSiteCode

885 **6.3.4.E3 IPS Vital Signs Organizer**

This template provides a mechanism for grouping vital signs (e.g., grouping systolic blood pressure and diastolic blood pressure).

The full details are located: <https://art-decor.org/art-decor/decor-templates--hl7ips-?section=templates&id=2.16.840.1.113883.10.22.4.44&effectiveDate=2020-05-08T19:27:39&language=en-US>

- 890 1) SHALL contain exactly one [1..1] @classCode="CLUSTER"
- 2) SHALL contain exactly one [1..1] @moodCode="EVN"
- 3) SHALL contain exactly one [1..1] templateId="2.16.840.113883.10.22.4.44"

- 895 4) SHOULD contain [0..*] id
- 5) SHALL contain exactly one [1..1] code="85353-1" Vital Signs (CodeSystem: LOINC:oid:2.16.840.1.113883.6.1)
- 6) SHALL contain exactly one [1..1] statusCode="completed"
- 7) SHOULD contain [0..1]
- Note: The effectiveTime is an interval that spans the effectiveTimes of the contained vital signs observations.
- 900 8) SHOULD contain zero or more [0..*] author
- 9) SHALL contain at least one [1..*] component
1. SHALL contain exactly one [1..1] IPS Vital Signs Observation (2.16.840.1.113.883.10.22.4.45) (Section 6.3.4.E4)

6.3.4.E4 IPS Vital Signs Observation

905 Specifies coded vital signs pertaining to the subject of care's health condition. It is a simple observation that uses a specific vocabulary, and inherits constraints from CCD.

The full details are located: <https://art-decor.org/art-decor/decor-templates--hl7ips-?section=templates&id=2.16.840.1.113883.10.22.4.45&effectiveDate=2020-05-08T19:31:32&language=en-US>

- 910 1) SHALL contain exactly one [1..1] templateId="2.16.840.1.113.883.10.22.4.45"
- 2) SHALL contain exactly one [1..1] code, which SHOULD be selected from ValueSet Vital Sign Result urn:oid:2.16.840.1.113883.3.88.12.80.62
- 3) SHOULD contain zero or one [0..1] text
- Note: The element if present points to the text describing the problem being recorded; including any dates, comments, et cetera. The contains a URI in value attribute. This URI points to the free text description of the problem in the document that is being described.
- 915 4) SHALL contain exactly one [1..1] reference
- 5) SHALL contain exactly one [1..1] value
- 6) SHOULD contain zero or more [0..*] interpretationCode
- 920 7) SHOULD contain zero or more [0..*] methodCode
- 8) SHOULD contain zero or more [0..*] targetSiteCode

6.3.4.E5 IPS Planned Observation

The observation request entry is used to record goals, plans or intention for an observation to be performed (e.g., assessment, laboratory test, imaging study, et cetera).

- 925 The full details are located: <https://art-decor.org/art-decor/decor-templates--hl7ips-?section=templates&id=2.16.840.1.113883.10.22.4.41&effectiveDate=2020-05-08T18:34:42&language=en-US>
- 1) SHALL contain exactly one [1..1] @classCode="OBS"
 - 2) SHALL contain exactly one [1..1] @moodCode [@moodCode="INT" OR
 - 930 @moodCode="PRP" OR @moodCode="GOL"]
 - 3) SHALL contain exactly one [1..1] templateId="2.16.840.1.113883.10.22.4.41"
 - 4) SHOULD contain zero or more [0..*] id
 - 5) SHALL contain exactly one [1..1] code
 - 6) SHOULD contain zero to one [0..1] text
 - 935 7) SHALL contain exactly one [1..1] reference
 - 8) SHALL contain exactly one [1..1] statusCode
 - 9) SHOULD contain zero or one [1..1] effectiveTime
 - 10) CAN contain zero or more [1..1] value
 - 11) CAN contain zero or more [1..1] methodCode
 - 940 12) CAN contain zero or more [1..1] targetSiteCode
 - 13) CAN contain zero or more [1..1] author

6.3.4.E6 IPS Planned Procedure

The procedure entry is used to record procedures which are planned for in the future.

- 945 The full details are located: <https://art-decor.org/art-decor/decor-templates--hl7ips-?section=templates&id=2.16.840.1.113883.10.22.4.38&effectiveDate=2020-05-08T17:38:48&language=en-US>
- 1) SHALL contain exactly one [1..1] @classCode="PROC"
 - 2) SHALL contain exactly one [1..1] @moodCode [@moodCode="INT" OR
 - 950 @moodCode="RQO"]
 - 3) SHALL contain exactly one [1..1] templateId="2.16.840.1.113883.10.22.4.38"
 - 4) SHOULD contain zero or more [0..*] id
 - 5) SHALL contain exactly one [1..1] code
 - 6) SHOULD contain zero to one [0..1] text
 - 7) SHALL contain exactly one [1..1] reference
 - 955 8) SHALL contain exactly one [1..1] statusCode

- 9) SHOULD contain zero or one [1..1] effectiveTime
- 10) CAN contain zero or more [1..1] targetSiteCode which SHOULD be selected from IPS Target Site Value Set urn:oid:2.16.840.1.113883.11.22.55 (DYNAMIC)
- 11) CAN contain zero or more [1..1] entryRelationship

960 **6.3.4.E7 IPS Planned Encounter**

This clinical statement represents the IPS Planned Encounter

The full details are located: <https://art-decor.org/art-decor/decor-templates--hl7ips-?section=templates&id=2.16.840.1.113883.10.22.4.40&effectiveDate=2020-05-08T18:18:38&language=en-US>

- 965
 - 1) SHALL contain exactly one [1..1] @classCode=" ENC"
 - 2) SHALL contain exactly one [1..1] @moodCode [@moodCode="APT" OR @moodCode="ARQ" OR @moodCode="PRP"]
 - 3) SHALL contain exactly one [1..1] templateId="2.16.840.1.113883.10.22.4.40"
 - 4) SHOULD contain zero or more [0..*] id
- 970
 - 5) SHALL contain exactly one [1..1] code
 - 6) SHOULD contain zero to one [0..1] text
 - 7) SHALL contain exactly one [1..1] reference
 - 8) SHOULD contain zero to one [0..1] effectiveTime
 - 9) SHOULD contain zero to one [0..1] priorityCode
- 975
 - 10) SHOULD contain zero or more [0..*] performer
 - 11) SHOULD contain zero or more [0..*] participant
 - a. SHALL contain exactly one [1..1] @typeCode="LOC"
 - b. SHALL contain exactly one [1..1] participantRole
 - 980
 - ii. SHOULD contain zero or more [0..*] id
 - iii. SHOULD contain zero or one [0..1] code
 - iv. SHOULD contain zero or more [0..*] addr
 - v. SHOULD contain zero or more [0..*] telecom
 - vi. SHALL contain exactly one [1..1] playingEntity
 - 985
 - 1. SHALL contain exactly one [1..1] @classCode="PLC"
 - 2. SHALL contain exactly one or more [1..*] name

6.3.4.E8 IPS Planned Immunization

A Planned Immunization entry describes the intent of administering immunization substance.

The full details are located: <https://art-decor.org/art-decor/decor-templates--hl7ips-?section=templates&id=2.16.840.1.113883.10.22.4.47&effectiveDate=2020-05-08T17:29:18&language=en-US08T18:18:38&language=en-US>

990

- 1) SHALL contain exactly one [1..1] @classCode="SBADM"
- 2) SHALL contain exactly one [1..1] @moodCode [@moodCode="INT" OR @moodCode="RQO" OR @moodCode="PRP"]

995

- 3) SHALL contain exactly one [1..1] templateId="2.16.840.1.113883.10.22.4.47"
- 4) SHOULD contain zero or more [0..*] id
- 5) SHALL contain exactly one [1..1] code
- 6) SHOULD contain zero to one [0..1] text
- 7) SHALL contain exactly one [1..1] reference

1000

- 8) SHOULD contain zero to one [0..1] effectiveTime
- 9) SHOULD contain zero to one [0..1] priorityCode
- 10) SHOULD contain zero or more [0..*] performer
- 11) SHOULD contain zero or more [0..*] participant

6.3.4.E9 IPS Planned Act

1005

This template represents a Planned Act. It may be a wrapper for intervention-type activities considered to be parts of the same intervention; or it could be used to describe planned acts not represented by the other care plan entry templates.

The full details are located: <https://art-decor.org/art-decor/decor-templates--hl7ips-?section=templates&id=2.16.840.1.113883.10.22.4.39&effectiveDate=2020-05-08T18:08:52&language=en-US>

1010

- 1) SHALL contain exactly one [1..1] @classCode="ACT"
- 2) SHALL contain exactly one [1..1] @moodCode="INT", OR "RQO", OR "PRP"
- 3) SHALL contain exactly one [1..1] templateId="2.16.840.1.113883.10.22.4.39"
- 4) SHOULD contain zero or more [0..*] id
- 5) SHALL contain exactly one [1..1] code
- 6) SHOULD contain zero to one [0..1] text
- 7) SHALL contain at least one [1..1] reference
 - a. SHALL contain at least one [1..1] @value

1015

- 1020
- 8) SHALL contain exactly one [1..1] statusCode="completed", @code shall be drawn from value set 2.16.840.1.113883.1.11.15933 ActStatus (DYNAMIC)
 - 9) SHOULD contain zero or one [0..1] effectiveTime
 - 10) SHOULD contain zero or more [0..*] performer
 - 11) SHOULD contain zero or more [0..*] author

6.3.4.E10 IPS Pregnancy Status Observation

1025 A pregnancy observation is a Simple Observation that uses a specific vocabulary to record observations about a patient's current or historical pregnancies.

The full details are located: <https://art-decor.org/art-decor/decor-templates--hl7ips-?section=templates&id=2.16.840.1.113883.10.22.4.36&effectiveDate=2020-05-07T18:36:37&language=en-US>

- 1030
- 1) SHALL contain exactly one [1..1] templateId="2.16.840.1.113883.10.22.4.27"
 - 2) SHALL contain exactly one [1..1] code="82810-3" Pregnancy status (CodeSystem: LOINC urn:oid:2.16.840.1.113883.6.1)
 - 3) SHALL contain exactly one [1..1] statusCode="completed"
 - 4) SHOULD contain zero or one [0..1] effectiveTime

1035 Note: The effectiveTime, also referred to as the “biologically relevant time” is the time at which the observation holds for the patient. For a provider seeing a patient in the clinic today, observing a history of heart attack that occurred five years ago, the effectiveTime is five years ago.

- 1040
- 5) SHALL contain exactly one [1..1] value (ValueSet: IPS Pregnancy Status 2.16.840.1.113883.11.22.68 DYNAMIC)
 - 6) SHOULD contain zero to one [0..1] entryRelationship
 - 1. SHALL contain exactly one [1..1] @typeCode="COMP" Refers to (CodeSystem: HL7ActRelationshipType urn:oid:2.16.840.1.113883.5.1002 STATIC)
 - 2. SHALL contain exactly one [1..1] IPS Pregnancy Expected Delivery Date Observation (identifier: urn:oid: 2.16.840.1.113883.10.22.4.29)
- 1045

6.3.4.E11 IPS Pregnancy Observation

A pregnancy observation is a Simple Observation that uses a specific vocabulary to record observations about a patient's current or historical pregnancies.

The full details are located: <https://art-decor.org/art-decor/decor-templates--hl7ips-?section=templates&id=2.16.840.1.113883.10.22.4.36&effectiveDate=2020-05-07T18:36:37&language=en-US>

1050

- 1055
- 1) SHALL contain exactly one [1..1] @moodCode="EVN"
 - 2) SHALL contain exactly one [1..1] templateId="2.16.840.1.113883.10.22.4.36"
 - 3) SHALL contain exactly one [1..1] code (CodeSystem: LOINC urn:oid:2.16.840.1.113883.6.1 DYNAMIC)
 - 4) SHOULD contain zero or one [0..1] text
 - 5) SHALL contain exactly one [1..1] statusCode="complete"
 - 6) SHOULD contain zero or one [0..1] effectiveTime
 - 7) SHALL contain at least one or more [1..*] value

1060 **6.3.4.E12 IPS Advance Directive Organizer**

This clinical statement groups a set of advance directive observations.

The full details are located: <https://art-decor.org/art-decor/decor-templates--hl7ips-?section=templates&id=2.16.840.1.113883.10.22.4.46&effectiveDate=2020-05-08T16:11:48&language=en-US>

- 1065
- 1) SHALL contain exactly one [1..1] @classCode="CLUSTER"
 - 2) SHALL contain exactly one [1..1] @moodCode="EVN"
 - 3) SHALL contain exactly one [1..1] templateId="2.16.840.1.113883.10.22.4.46 "
 - 4) SHOULD contain [0..*] id
- 1070
- 5) SHALL contain exactly one [1..1] code="85353-1" Vital Signs (CodeSystem: LOINC:oid:2.16.840.1.113883.6.1)
 - 6) SHALL contain exactly one [1..1] statusCode="completed"
 - 7) SHOULD contain zero or more [0..*] author
 - 8) SHALL contain at least one [1..*] component
- 1075
1. SHALL contain exactly one [1..1] IPS Advance Directive Observation (2.16.840.1.113883.10.22.4.37) (Section 6.3.4.E14)

6.3.4.E13 IPS Advance Directive Observation

This clinical statement represents the IPS Advance Directive Observation.

The full details are located: <https://art-decor.org/art-decor/decor-templates--hl7ips-?section=templates&id=2.16.840.1.113883.10.22.4.37&effectiveDate=2020-05-08T16:21:54&language=en-US>

- 1080
- 1) SHALL contain exactly one [1..1] @classCode="OBS"
 - 2) SHALL contain exactly one [1..1] @moodCode="EVN"

- 3) SHALL contain exactly one [1..1] templateId="2.16.840.1.113883.10.22.4.37"
- 4) SHOULD contain [0..*] id
- 1085 5) SHALL contain exactly one [1..1] code
- 6) SHALL contain exactly one [1..1] statusCode="completed"
- 7) SHALL contain exactly one [1..1] effectiveTime
 - a. SHALL contain exactly one [1..1] low
 - b. SHALL contain exactly one [1..1] high
- 1090 Note: If the Advance Directive does not have a specified ending time, the <high> element SHALL have the nullFlavor attribute set to NA
- 8) SHALL contain exactly one [1..1] value
- 9) SHOULD contain zero or more [0..*] participant where [@typeCode='VRF']
- 10) SHOULD contain zero or more [0..*] participant where [@typeCode='CST']
- 1095 11) SHOULD contain zero or more [0..*] reference [@typeCode='REFR']
 - a. SHALL contain at least one [1..1] externalDocument
 - i. SHALL contain at least one [1..*] id
 - ii. CAN contain [0..1] text
 - 1. CAN contain [0..1] reference

1100 **6.3.4.E14 IPS Social History Observation**

1105 This template represents a patient's occupations, lifestyle, and environmental health risk factors. Demographic data (e.g., marital status, race, ethnicity, religious affiliation) are captured in the header. Though tobacco use and exposure may be represented with a Social History Observation, it is recommended to use the Current Smoking Status template or the Tobacco Use template instead, to represent smoking or tobacco habits.

The full details are located: <https://art-decor.org/art-decor/decor-templates--hl7ips-?section=templates&id=2.16.840.1.113883.10.22.4.48&effectiveDate=2020-05-10T15:16:16&language=en-US>

- 1) SHALL contain exactly one [1..1] @classCode="OBS"
- 1110 2) SHALL contain exactly one [1..1] @moodCode="EVN"
- 3) SHALL contain exactly one [1..1] templateId="2.16.840.1.113883.10.22.4.48"
- 4) SHOULD contain [0..*] id
- 5) SHALL contain exactly one [1..1] code
- 6) SHOULD contain zero or one [0..1] text

- 1115
- a. SHALL contain zero or more [1..1] reference
 - 7) SHALL contain exactly one [1..1] statusCode="completed"
 - 8) SHOULD contain zero or one [1..1] effectiveTime
 - 9)) SHALL contain exactly one [1..1] value

6.4 Section not applicable

1120 Not applicable.

6.5 PCC Value Sets and Concept Domains

Not applicable.

6.6 HL7 FHIR Content Module

6.6.X.1 FHIR Resource Bundle Content

1125 The following table reflects the IPS FHIR Composition (<http://hl7.org/fhir/uv/ips/StructureDefinition-Composition-uv-ips.html>). Optionality is shown as specified in HL7 as well as the modified optionality required to fulfill the IPS FHIR Complete Option of this Profile.

FHIR Resource location		HL7 Optionality	Complete Option Optionality	Cardinality	Structured Definition
Composition	Clinical Document	R	R	1..1	http://hl7.org/fhir/uv/ips/StructureDefinition-Composition-uv-ips.html
type	CodeableConceptIPS	-	-	1..1	http://hl7.org/fhir/uv/ips/StructureDefinition-CodeableConcept-uv-ips.html
subject	Patient (IPS)	RE	RE	0..1	http://hl7.org/fhir/uv/ips/StructureDefinition-Patient-uv-ips.html
section:sectionMedications	IPS Medication Summary Section	R	R	1..1	-
entry:medicationStatement	Medication Statement (IPS)	R	R	1..*	http://hl7.org/fhir/uv/ips/StructureDefinition-MedicationStatement-uv-ips.html
section:sectionAllergies	IPS Allergies and Intolerances Section	R	R	1..1	-
entry:allergyOrIntolerance	Allergy Intolerance (IPS)	R	R	1..*	http://hl7.org/fhir/uv/ips/StructureDefinition-AllergyIntolerance-uv-ips.html

IHE Patient Care Coordination Technical Framework Supplement – International Patient Summary (IPS)

FHIR Resource location		HL7 Optionality	Complete Option Optionality	Cardinality	Structured Definition
section:sectionProblems	IPS Problems Section	R	R	1..1	-
entry:problem	Condition (IPS)	R	R	1..*	http://hl7.org/fhir/uv/ips/StructureDefinition-Condition-uv-ips.html
section:sectionProceduresHx	IPS History of Procedures Section	RE	RE	0..1	-
entry:procedure	Procedure (IPS)	R	R	1..*	http://hl7.org/fhir/uv/ips/StructureDefinition-Procedure-uv-ips.html
section:sectionImmunizations	IPS Immunizations Section	RE	RE	0..1	-
entry:immunization	Immunization (IPS)	R	R	1..*	http://hl7.org/fhir/uv/ips/StructureDefinition-Immunization-uv-ips.html
section:sectionMedicalDevices	IPS Medical Devices Section	RE	RE	0..1	-
entry:deviceStatement	Device Use Statement (IPS)	R	R	1..*	http://hl7.org/fhir/uv/ips/StructureDefinition-DeviceUseStatement-uv-ips.html
section:sectionResults	IPS Results Section	RE	RE	0..*	-
entry:results-observation	Observation Results: laboratory (IPS)	O	O	0..*	http://hl7.org/fhir/uv/ips/StructureDefinition-Observation-results-laboratory-uv-ips.html
	Observation Results: pathology (IPS)	O	O	0..*	http://hl7.org/fhir/uv/ips/StructureDefinition-Observation-results-pathology-uv-ips.html
	Observation Results: radiology (IPS)	O	O	0..*	http://hl7.org/fhir/uv/ips/StructureDefinition-Observation-results-radiology-uv-ips.html
	Observation Results (IPS)	O	O	0..*	http://hl7.org/fhir/uv/ips/StructureDefinition-Observation-results-uv-ips.html
entry:results-diagnosticReport	DiagnosticReport (IPS)	O	O	0..*	http://hl7.org/fhir/uv/ips/StructureDefinition-DiagnosticReport-uv-ips.html
section:sectionVitalSigns	IPS Vital Signs Section	O	RE	0..1	-
entry:vitalSign	Vital Signs Profile	O	O	0..*	http://hl7.org/fhir/R4/vitalsigns.html
section:sectionPastIllnessHx	IPS History of Past Illness Section	O	RE	0..1	-
entry:pastProblem	Condition (IPS)	R	R	1..*	http://hl7.org/fhir/uv/ips/StructureDefinition-Condition-uv-ips.html
section:sectionFunctionalStatus	IPS Functional Status	O	RE	0..1	-
entry:disability	Condition (IPS)	O	O	0..*	http://hl7.org/fhir/uv/ips/StructureDefinition-Condition-uv-ips.html

FHIR Resource location		HL7 Optionality	Complete Option Optionality	Cardinality	Structured Definition
entry:functionalAssessment	ClinicalImpression	O	O	0..*	http://hl7.org/fhir/R4/clinicalimpression.html
section:sectionPlanOfCare	IPS Plan of Care Section	O	RE	0..1	-
entry:carePlan	CarePlan	O	O	0..*	http://hl7.org/fhir/R4/careplan.html
section:sectionSocialHistory	IPS Social History Section	O	RE	0..1	-
entry:smokingTobaccoUse	Observation (SH: tobacco use)	O	O	0..1	http://hl7.org/fhir/uv/ips/StructureDefinition-Observation-tobaccouse-uv-ips.html
entry:alcoholUse	Observation (SH: alcohol use)	O	O	0..1	http://hl7.org/fhir/uv/ips/StructureDefinition-Observation-alcoholuse-uv-ips.html
section:sectionPregnancyHx	IPS History of Pregnancy Section	O	RE	0..1	-
entry:pregnancyStatus	Observation (Pregnancy: status)	O	O	0..*	http://hl7.org/fhir/uv/ips/StructureDefinition-Observation-pregnancy-status-uv-ips.html
entry:pregnancyOutcomeSummary	Observation (Pregnancy: outcome)	O	O	0..*	http://hl7.org/fhir/uv/ips/StructureDefinition-Observation-pregnancy-outcome-uv-ips.html
section:sectionAdvanceDirectives	IPS Advance Directives Section	O	RE	0..1	-
entry:advanceDirectivesConsent	Consent	O	O	0..*	http://hl7.org/fhir/R4/consent.html

1130

6.6.X.1.2 FHIR Resource Data Specifications

The following table shows the mapping of the FHIR Resources supporting the content for International Patient Summary data Elements/Attributes defined by CEN.

6.6.X.1.2.1 FHIR IPS Patient Attributes Section

1135 The following table provides guidance on the FHIR Resource locations of the CEN/ISO data elements within the EN 17269 Patient Attributes Section.

Cen/ISO Data Elements	FHIR Resource Location	References
Patient Attributes	Patient:PatientUvIps	
Patient's name	Patient:PatientUvIps.name	
Patient's address and telecom	see below	

Cen/ISO Data Elements		FHIR Resource Location	References
	Address	Patient:PatientUvIps.address	
	Telecoms	Patient:PatientUvIps.telecom	
	Administrative gender	Patient:PatientUvIps.gender	
	Date of birth	Patient:PatientUvIps.birthDate	
	Patient’s preferred language	Patient:PatientUvIps.communication.language	
	Healthcare related identifiers	Patient:PatientUvIps.identifier	
	Patient identifier	Patient:PatientUvIps.identifier	
	Insurance information	Patient:PatientUvIps.identifier	
	Insurance identifier	Patient:PatientUvIps.identifier	

6.6.X.1.2.2 FHIR IPS Patient's Address Book Section

1140 The following table provides guidance on the FHIR Resource locations of the CEN/ISO data elements within the EN 17269 Patient's Address Book Section.

Cen/ISO Data Elements		FHIR Resource Location	References
Patient Attributes		Patient:PatientUvIps	
	Patient’s name	Patient:PatientUvIps.name	
	Patient’s address and telecom	see below	
	Address	Patient:PatientUvIps.address	
	Telecoms	Patient:PatientUvIps.telecom	
	Administrative gender	Patient:PatientUvIps.gender	
	Date of birth	Patient:PatientUvIps.birthDate	
	Patient’s preferred language	Patient:PatientUvIps.communication.language	
	Healthcare related identifiers	Patient:PatientUvIps.identifier	
	Patient identifier	Patient:PatientUvIps.identifier	
	Insurance information	Patient:PatientUvIps.identifier	
Insurance identifier	Patient:PatientUvIps.identifier		

6.6.X.1.2.3 FHIR IPS Advanced Directives Section

1145 The following table provides guidance on the FHIR Resource locations of the CEN/ISO data elements within the EN 17269 Advanced Directives section.

Cen/ISO Data Elements	FHIR Resource Location	References
Advance Directives Section	Composition.section:sectionAdvanceDirectives	

Cen/ISO Data Elements	FHIR Resource Location	References
Advance Directives	Composition.section:sectionAdvanceDirectives	
Advance Directive	Composition.section:sectionAdvanceDirectives.entry:advanceDirectivesConsent	
Person Authorizing Directive	Composition.section:sectionAdvanceDirectives.entry:advanceDirectivesConsent.performer:Patient Composition.section:sectionAdvanceDirectives.entry:advanceDirectivesConsent.performer:RelatedPerson	6.6.X.1.2.3.Z.1
Person Authorizing Name	Composition.section:sectionAdvanceDirectives.entry:advanceDirectivesConsent.performer.name	
Person Authorizing Role	Composition.section:sectionAdvanceDirectives.entry:advanceDirectivesConsent.performer:RelatedPerson.relationship	
Person Authorizing Telecoms	Composition.section:sectionAdvanceDirectives.entry:advanceDirectivesConsent.performer.telecom	
Directive Category	Composition.section:sectionAdvanceDirectives.entry:advanceDirectivesConsent.category	
Directive Description	Composition.section:sectionAdvanceDirectives.text Composition.section:sectionAdvanceDirectives.entry:advanceDirectivesConsent.text	
Reference to Legal Document	Composition.section:sectionAdvanceDirectives.entry:advanceDirectivesConsent.sourceReference:DocumentReference	

6.6.X.1.2.3.Z Advanced directives Resource References

1150 6.6.X.1.2.3.Z.1 Person Authorizing Directive

If the person authorizing the Advanced directive is the patient then the Person Authorizing Directive element should be found in:

Composition.section:sectionAdvanceDirectives.entry:advanceDirectivesConsent.performer:Patient

1155 If the person authorizing the Advanced directive is a patient representative then the Person Authorizing Directive element should be found in:

Composition.section:sectionAdvanceDirectives.entry:advanceDirectivesConsent.performer:RelatedPerson

6.6.X.1.2.4 FHIR IPS Allergy Intolerance Section

1160 The following table provides guidance on the FHIR Resource locations of the CEN/ISO data elements within the EN 17269 Allergy and Intolerance Section.

Cen/ISO Data Elements	FHIR Resource Location	References
Allergies and Intolerances	Composition.section:sectionAllergies	
Allergies/Intolerances content status	Composition.section:sectionAllergies.entry:allergyOrIntolerance.code:absentOrUnknownAllergyIntolerance	
Allergies and Intolerances	Composition.section:sectionAllergies.entry:allergyOrIntolerance	
Allergy/Intolerance	Composition.section:sectionAllergies.entry:allergyOrIntolerance	
Allergy/Intolerance description	Composition.section:sectionAllergies.text Composition.section:sectionAllergies.entry:allergyOrIntolerance.text	
Allergy/Intolerance Clinical status	Composition.section:sectionAllergies.entry:allergyOrIntolerance.clinicalStatus	
Allergy/Intolerance Onset Date	Composition.section:sectionAllergies.entry:allergyOrIntolerance.onsetDateTime	
Allergy/Intolerance End Date	Composition.section:sectionAllergies.entry:allergyOrIntolerance.extension:AbatementDateTimeUvIps	
Allergy/Intolerance Criticality	Composition.section:sectionAllergies.entry:allergyOrIntolerance.criticality	
Allergy/Intolerance Certainty	Composition.section:sectionAllergies.entry:allergyOrIntolerance.verificationStatus	
Allergy/Intolerance Type of propensity	Composition.section:sectionAllergies.entry:allergyOrIntolerance.type	
Allergy/Intolerance Diagnosis	Composition.section:sectionAllergies.entry:allergyOrIntolerance.code	
Allergy/Intolerance Reaction	Composition.section:sectionAllergies.entry:allergyOrIntolerance.reaction	
Allergy/Intolerance Manifestation of the reaction	Composition.section:sectionAllergies.entry:allergyOrIntolerance.reaction.manifestation	
Allergy/Intolerance Severity	Composition.section:sectionAllergies.entry:allergyOrIntolerance.reaction.severity	
Allergy/Intolerance Agent	see below	
Allergy/Intolerance Agent code	Composition.section:sectionAllergies.entry:allergyOrIntolerance.code	
Allergy/Intolerance Category	Composition.section:sectionAllergies.entry:allergyOrIntolerance.category	

6.6.X.1.2.5 FHIR IPS Functional Status Section

1165 The following table provides guidance on the FHIR Resource locations of the CEN/ISO data elements within the EN 17269 Functional Status Section.

Cen/ISO Data Elements	FHIR Resource Location	References
Functional Status Section	Composition.section:sectionFunctionalStatus	
Disabilities	Composition.section:sectionFunctionalStatus.entry:disability	
Disability	Composition.section:sectionFunctionalStatus.entry:disability	
Disability Description	Composition.section:sectionFunctionalStatus.text Composition.section:sectionFunctionalStatus.entry:disability.text	
Disability Code	Composition.section:sectionFunctionalStatus.entry:disability.code	
Onset Date	Composition.section:sectionFunctionalStatus.entry:disability.onsetDateTime	
Functional assessments (determines autonomy)	Composition.section:sectionFunctionalStatus.entry:functionalAssessment	
Functional Assessment (type performed)	Composition.section:sectionFunctionalStatus.entry:functionalAssessment	
Functional Assessment description	Composition.section:sectionFunctionalStatus.text Composition.section:sectionFunctionalStatus.entry:functionalAssessment.text	
Date of assessment	Composition.section:sectionFunctionalStatus.entry:functionalAssessment.effectiveDateTime	
Type	Composition.section:sectionFunctionalStatus.entry:functionalAssessment.code	
Result	Composition.section:sectionFunctionalStatus.entry:functionalAssessment.finding.itemReference.code	
Functional Assessment	Composition.section:sectionFunctionalStatus.entry:functionalAssessment	

6.6.X.1.2.6 FHIR IPS History of Past Problems Section

1170 The following table provides guidance on the FHIR Resource locations of the CEN/ISO data elements within the EN 17269 History of Past Problems Section.

Cen/ISO Data Elements		FHIR Resource Location	References
History of Past Problems		Composition.section:sectionPastIllnessHx	
Past problems		Composition.section:sectionPastIllnessHx.entry:pastProblem	
Past problem		Composition.section:sectionPastIllnessHx.entry:pastProblem	
Problem type		Composition.section:sectionPastIllnessHx.entry:pastProblem.category	6.6.X.1.2.6.Z.1
Problem Description		Composition.section:sectionPastIllnessHx.text Composition.section:sectionPastIllnessHx.entry:pastProblem.text	
Problem Diagnoses		Composition.section:sectionPastIllnessHx.entry:pastProblem.code	
Problem Severity		Composition.section:sectionPastIllnessHx.entry:pastProblem.severity	
Problem Onset Date		Composition.section:sectionPastIllnessHx.entry:pastProblem.onsetDateTime	
Problem Status		Composition.section:sectionPastIllnessHx.entry:pastProblem.clinicalStatus	
Date Problem Resolved		Composition.section:sectionPastIllnessHx.entry:pastProblem.abatementDateTime	
Specialist Contact for problem		Not explicitly specified	Open Issue 41

6.6.X.1.2.6.Z IPS History of Past Problems References

1175 6.6.X.1.2.6.Z.1 Problem type

In addition to the HL7 <http://terminology.hl7.org/CodeSystem/condition-category> extensible value set the following additional problem types may also be documented:

- 148006 Preliminary diagnosis (contextual qualifier) (qualifier value)
- 5558000 Working diagnosis (contextual qualifier) (qualifier value)
- 1180 • 30207005 Risk of (contextual qualifier) (qualifier value)
- Medical Alert SNOMED-CT qualifier value is pending (see open issues)

6.6.X.1.2.7 FHIR IPS History of Pregnancy Section

The following table provides guidance on the FHIR Resource locations of the CEN/ISO data elements within the EN 17269 History of Pregnancy Section.

1185

Cen/ISO Data Elements	FHIR Resource Location	References
History of Pregnancy Section	Composition.section:sectionPregnancyHx	
Current pregnancy status	Composition.section:sectionPregnancyHx.entry:pregnancyStatus	
Pregnancy description	Composition.section:sectionPregnancyHx.entry Composition.section:sectionPregnancyHx.entry:pregnancyStatus.text	
Pregnancy details	see below	
Date of observation	Composition.section:sectionPregnancyHx.entry:pregnancyStatus.effectiveDateTime	
Pregnancy state	Composition.section:sectionPregnancyHx.entry:pregnancyStatus.valueCodeableConcept	
Expected delivery date	Composition.section:sectionPregnancyHx.entry:pregnancyStatus.hasMember:ObservationPregnancyEddUvIps.valueDateTime	
Specialist contact	Not explicitly specified	Open Issue 41
Previous history of pregnancies	Composition.section:sectionPregnancyHx.entry	
Previous pregnancies status	Composition.section:sectionPregnancyHx.entry:Observation	
Previous pregnancies description	Composition.section:sectionPregnancyHx.text Composition.section:sectionPregnancyHx.entry:Observation.text	
Previous pregnancies	Composition.section:sectionPregnancyHx.entry:Observation	
Previous pregnancy details	see below	
Outcome date	Composition.section:sectionPregnancyHx.entry:Observation.effectiveDateTime	
Outcome	Composition.section:sectionPregnancyHx.entry:Observation.value[x]	
Specialist contact	Not explicitly specified	Open Issue 41
Summary metric	Composition.section:sectionPregnancyHx.entry:pregnancyOutcomeSummary	

6.6.X.1.2.8 FHIR IPS History of Procedures Section

The following table provides guidance on the FHIR Resource locations of the CEN/ISO data elements within the EN 17269 History of Procedures Section.

1190

Cen/ISO Data Elements		FHIR Resource Location	References
History of Procedures		Composition.section:sectionProceduresHx	
	Procedures content status	Composition.section:sectionProceduresHx.entry:procedure.code:absentOrUnknownProcedure	
	Procedures	Composition.section:sectionProceduresHx.entry:procedure	
	Procedure	Composition.section:sectionProceduresHx.entry:procedure	
	Procedure code	Composition.section:sectionProceduresHx.entry:procedure.code	
	Procedure description	Composition.section:sectionProceduresHx.entry Composition.section:sectionProceduresHx.entry:procedure.text	
	Body site	Composition.section:sectionProceduresHx.entry:procedure.bodySite	
Procedure date	Composition.section:sectionProceduresHx.entry:procedure.performedDateTime		

6.6.X.1.2.9 FHIR IPS Immunizations Section

The following table provides guidance on the FHIR Resource locations of the CEN/ISO data elements within the EN 17269 Immunizations Section.

1195

Cen/ISO Data Elements		FHIR Resource Location	References
Immunizations		Composition.section:sectionImmunizations	
	Immunizations content status	Composition.section:sectionImmunizations.entry:immunization.vaccineCode:absentOrUnknownImmunization	
	Immunizations	Composition.section:sectionImmunizations.entry:immunization	
	Immunization	Composition.section:sectionImmunizations.entry:immunization	

	Vaccine for type of disease	Composition.section:sectionImmunizations.entry:immunization.vaccineCode	
	Target diseases	Composition.section:sectionImmunizations.entry:immunization.protocolApplied.targetDisease	
	Target disease	Composition.section:sectionImmunizations.entry:immunization.protocolApplied.targetDisease	
	Date of immunization	Composition.section:sectionImmunizations.entry:immunization.occurrenceDateTime	
	Product administered	Composition.section:sectionImmunizations.entry:immunization.vaccineCode	
	Brand name	Composition.section:sectionImmunizations.entry:immunization.vaccineCode	
	Product administration process	see below	
	Performer	Composition.section:sectionImmunizations.entry:immunization.performer	
	Route of administration	Composition.section:sectionImmunizations.entry:immunization.route	

6.6.X.1.2.10 FHIR IPS Medical Devices Section

The following table provides guidance on the FHIR Resource locations of the CEN/ISO data elements within the EN 17269 Medical Devices Section.

1200

Cen/ISO Data Elements	FHIR Resource Location	References
Medical Devices	Composition.section:sectionMedicalDevices	
Device content status	Composition.section:sectionMedicalDevices.entry:deviceStatement.device:DeviceUvIps.type:absentOrUnknownDevice	
Devices	Composition.section:sectionMedicalDevices.entry:deviceStatement	
Device	Composition.section:sectionMedicalDevices.entry:deviceStatement	

	Device type	Composition.section:sectionMedicalDevices.entry:deviceStatement.device:DeviceUvIps.type	
	Device identifier	Composition.section:sectionMedicalDevices.entry:deviceStatement.device:DeviceUvIps.udiCarrier	
	Use start date	Composition.section:sectionMedicalDevices.entry:deviceStatement.timingPeriod	
	Use end date	Composition.section:sectionMedicalDevices.entry:deviceStatement.timingPeriod	

6.6.X.1.2.11 FHIR IPS Medication Summary Section

The following table provides guidance on the FHIR Resource locations of the CEN/ISO data elements within the EN 17269 Medication Summary Section.

1205

Cen/ISO Data Elements	FHIR Resource Location	References
Medication Summary	Composition.section:sectionMedications	
Medication summary content status	Composition.section:sectionMedications.entry:medicationStatement.medication.code	
Medications	Composition.section:sectionMedications.entry:medicationStatement	
Medication	Composition.section:sectionMedications.entry:medicationStatement	
Reason	Composition.section:sectionMedications.entry:medicationStatement.reasonCode	
Medicinal product	Composition.section:sectionMedications.entry:medicationStatement.medication[x]	
Product code	Composition.section:sectionMedications.entry:medicationStatement.medicationReference:MedicationIPS.code [preferred] Composition.section:sectionMedications.entry:medicationStatement.medicationCodeableConcept	
Product common name (and strength)	Composition.section:sectionMedications.entry:medicationStatement.medicationReference:MedicationIPS.code Composition.section:sectionMedications.entry:medicationStatement.medicationReference:MedicationIPS.text Composition.section:sectionMedications.entry:medicationStatement.text	
Pharmaceutical dose form	Composition.section:sectionMedications.entry:medicationStatement.medicationReference:MedicationIPS.form	
Brand name	Composition.section:sectionMedications.entry:medicationStatement.medicationReference:MedicationIPS.code Composition.section:sectionMedications.entry:medicationStatement.medicationReference:MedicationIPS.text Composition.section:sectionMedications.entry:medicationStatement.text	

IHE Patient Care Coordination Technical Framework Supplement – International Patient Summary (IPS)

	Active ingredients	Composition.section:sectionMedications.entry:medicationStatement .medicationReference:MedicationIPS.ingredient	
	Active ingredient	Composition.section:sectionMedications.entry:medicationStatement .medicationReference:MedicationIPS.ingredient	
	Substance code	Composition.section:sectionMedications.entry:medicationStatement .medicationReference:MedicationIPS.ingredient.itemCodeableConcept	
	Strength	Composition.section:sectionMedications.entry:medicationStatement .medicationReference:MedicationIPS.ingredient.strength	
	Administration instruction	Composition.section:sectionMedications.entry:medicationStatement .dosage	
	Instruction	Composition.section:sectionMedications.entry:medicationStatement .text Composition.section:sectionMedications.entry:medicationStatement .dosage.patientInstruction	
	Period of medication use	Composition.section:sectionMedications.entry:medicationStatement .effective[x].effectivePeriod Composition.section:sectionMedications.entry:medicationStatement .dosage.timing	
	Route of administration	Composition.section:sectionMedications.entry:medicationStatement .dosage.route	
	Dose instruction	Composition.section:sectionMedications.entry:medicationStatement .dosage	
	No. of units per intake	Composition.section:sectionMedications.entry:medicationStatement .dosage.doseAndRate.dose[x]	
Frequency of intake	Composition.section:sectionMedications.entry:medicationStatement .dosage.timing		

6.6.X.1.2.12 FHIR IPS Plan of Care Section

The following table provides guidance on the FHIR Resource locations of the CEN/ISO data elements within the EN 17269 Plan of Care Section.

1210

Cen/ISO Data Elements	FHIR Resource Location	References
Plan of Care	Composition.section:sectionPlanOfCare	
Plans	Composition.section:sectionPlanOfCare.entry:carePlan	
Plan	Composition.section:sectionPlanOfCare.entry:carePlan	

Cen/ISO Data Elements		FHIR Resource Location	References
	Plan type	Composition.section:sectionPlanOfCare.entry:carePlan.category	
	Plan date	Composition.section:sectionPlanOfCare.entry:carePlan.created	
	Plan description	Composition.section:sectionPlanOfCare.text Composition.section:sectionPlanOfCare.entry:carePlan.text Composition.section:sectionPlanOfCare.entry:carePlan.description	
	Recommendations (Core Care Plan)	Composition.section:sectionPlanOfCare.entry:carePlan.activity	
	Recommendation	Composition.section:sectionPlanOfCare.entry:carePlan.activity	
	Recommendation for treatment	Composition.section:sectionPlanOfCare.entry:carePlan.activity.detail Composition.section:sectionPlanOfCare.entry:carePlan.activity.reference	
	Given recommendation date	Composition.section:sectionPlanOfCare.entry:carePlan.created	
	Applicable date	Composition.section:sectionPlanOfCare.entry:carePlan.period Composition.section:sectionPlanOfCare.entry:carePlan.activity.detail.scheduled[x] Composition.section:sectionPlanOfCare.entry:carePlan.activity.reference	
Extensive Plan	Composition.section:sectionPlanOfCare.entry:carePlan		

6.6.X.1.2.13 FHIR IPS Problems Section

The following table provides guidance on the FHIR Resource locations of the CEN/ISO data elements within the EN 17269 Problems Section.

1215

Cen/ISO Data Elements		FHIR Resource Location	References
Problems		Composition.section:sectionProblems	
	Problems content status	Composition.section:sectionProblems.entry:problem.code:absentOrUnknownProblem	
	Problems	Composition.section:sectionProblems.entry:problem	
	Problem	Composition.section:sectionProblems.entry:problem	

Cen/ISO Data Elements		FHIR Resource Location	References
	Problem type	Composition.section:sectionProblems.entry:problem.category	
	Problem description	Composition.section:sectionProblems.text Composition.section:sectionProblems.entry:problem.text	
	Diagnosis	Composition.section:sectionProblems.entry:problem.code	
	Severity	Composition.section:sectionProblems.entry:problem.severity	
	Onset date	Composition.section:sectionProblems.entry:problem.onsetDateTime	
	Problem status	Composition.section:sectionProblems.entry:problem.clinicalStatus	
	Specialist contact	Not explicitly specified	Open Issue 41

6.6.X.1.2.14 FHIR IPS Results Section

The following table provides guidance on the FHIR Resource locations of the CEN/ISO data elements within the EN 17269 Results Section.

1220

Cen/ISO Data Elements		FHIR Resource Location	References
Results		Composition.section:sectionResults	
	Observation results	Composition.section:sectionResults.entry	
	Observation result	Composition.section:sectionResults.entry:results-observation (this refers four profiles) : ObservationResultsLaboratoryUvIps; ObservationResultsUvIps; ObservationResultsPathologyUvIps; ObservationResultsRadiologyUvIps) Composition.section:sectionResults.entry:diagnosticReport	-
	Date of observation	Composition.section:sectionResults.entry:Observation.effective[x] Composition.section:sectionResults.entry:results-diagnosticReport.result:observation-results.effective[x]	-
	Observation type	Composition.section:sectionResults.entry:results-observation.category Composition.section:sectionResults.entry:results-diagnosticReport.result:observation-results.code	
	Result description	Composition.section:sectionResults.text Composition.section:sectionResults.entry:Observation.text	
	Value	Composition.section:sectionResults.entry:results-observation.value[x] Composition.section:sectionResults.entry:results-diagnosticReport.result:observation-results.value[x]	
	Observation result	Composition.section:sectionResults.entry:results-observation.hasMember	

Cen/ISO Data Elements		FHIR Resource Location	References
		Composition.section:sectionResults.entry:results-diagnosticReport.result:observation-results	
	Performer	Composition.section:sectionResults.entry:results-observation.performer Composition.section:sectionResults.entry:results-diagnosticReport.result:observation-results.performer	
	Observer	Composition.section:sectionResults.entry:Observation.performer Composition.section:sectionResults.entry:Observation.device:DeviceObserverUvIps Composition.section:sectionResults.entry:results-diagnosticReport.result:observation-results.performer Composition.section:sectionResults.entry:results-diagnosticReport.result:observation-results.device:DeviceObserverUvIps	

6.6.X.1.2.15 FHIR IPS Social History Section

6.6.X.1.2.15.1 CEN/ISO FHIR IPS Social History Elements

The following table provides guidance on the FHIR Resource locations of the CEN/ISO data elements within the EN 17269 Social History Section.

1225

Cen/ISO Data Elements		FHIR Resource Location	References
Social History		Composition.section:sectionSocialHistory	
	Life style factors	Composition.section:sectionSocialHistory.entry	
	Life style factor	Composition.section:sectionSocialHistory.entry:smokingTobaccoUse Composition.section:sectionSocialHistory.entry:alcoholUse	
	Life style factor description	Composition.section:sectionSocialHistory.entry:smokingTobaccoUse Composition.section:sectionSocialHistory.entry:alcoholUse	
	Life style factor details	Composition.section:sectionSocialHistory.text Composition.section:sectionSocialHistory.entry:Observation.text	
	Reference date range	Composition.section:sectionSocialHistory.entry:Observation.value[x]	

6.6.X.1.2.15.2 Occupational Data for Health Option FHIR IPS Social History Additional Elements

1230

Content Creators implementing the Occupational Data for Health Option SHALL include one or more of the following work related observations as a Social History Section entry as defined by the structured definition in the reference column:

Occupational Data for Health Elements	FHIR Resource Location	References
Social History	Composition.section:sectionSocialHistory	
Life style factors	Composition.section:sectionSocialHistory.entry	
Life style factor	Composition.section:sectionSocialHistory.entry:CombatZonePeriod	https://github.com/IHE/fhir/blob/master/StructureDefinition/IHE.ODH.CombatZonePeriod.StructuredDefinition.xml (See Note 1)
Life style factor	Composition.section:sectionSocialHistory.entry:EmploymentStatus	https://github.com/IHE/fhir/blob/master/StructureDefinition/IHE.ODH.EmploymentStatus.StructuredDefinition.xml (See Note 1)
Life style factor	Composition.section:sectionSocialHistory.entry: PastOrPresentJob	https://github.com/IHE/fhir/blob/master/StructureDefinition/IHE.ODH.PastOrPresentJob.StructuredDefinition.xml (See Note 1)
Life style factor	Composition.section:sectionSocialHistory.entry: RetirementDate	https://github.com/IHE/fhir/blob/master/StructureDefinition/IHE.ODH.RetirementDate.StructuredDefinition.xml (See Note 1)
Life style factor	Composition.section:sectionSocialHistory.entry: UsualWork	https://github.com/IHE/fhir/blob/master/StructureDefinition/IHE.ODH.UsualWork.StructuredDefinition.xml (See Note 1)

1235 Note 1: Structured Definition can be found following the instructions in the IHE Technical Frameworks General Introduction [Appendix G: IHE Implementation Materials](#).

6.6.X.1.2.16 FHIR IPS Vital Signs Section

The following table provides guidance on the FHIR Resource locations of the CEN/ISO data elements within the EN 17269 Vital Signs Section.

1240

Cen/ISO Data Elements	FHIR Resource Location	References
Vital Signs	Composition.section:sectionVitalSigns	
Vital signs	Composition.section:sectionVitalSigns.entry:vitalSign	
Vital sign	Composition.section:sectionVitalSigns.entry:vitalSign	

Cen/ISO Data Elements		FHIR Resource Location	References
	Date of observation	Composition.section:sectionVitalSigns.entry:vitalSign.effective[x]	
	Observation type	Composition.section:sectionVitalSigns.entry:vitalSign.code	
	Result description	Composition.section:sectionSocialHistory.text Composition.section:sectionSocialHistory.entry:Observation.text	
	Value	Composition.section:sectionVitalSigns.entry:vitalSign.value[x] Composition.section:sectionVitalSigns.entry:vitalSign.component.value[x]	
	Vital sign	Composition.section:sectionVitalSigns.entry:vitalSign.hasMember	

Note: At least one of these shall be populated

6.6.X.1.2.17 FHIR IPS Cross Border Section

1245

The following table provides guidance on the FHIR Resource locations of the CEN/ISO data elements within the EN 17269 Cross Border Section.

Cen/ISO Data Elements		FHIR Resource Location	References
Cross Border		N/A	
	Country of affiliation	Patient:PatientUvIps.address.country	
	Country specific requirements	N/A	

6.6.X.1.2.18 FHIR IPS Provenance Metadata

1250

The following table provides guidance on the FHIR Resource locations of the CEN/ISO data elements within the EN 17269 Provenance Metadata.

Cen/ISO Data Elements		FHIR Resource Location	References
Provenance Metadata		N/A	
	Asserter (source of information)	it depends on the context of use	
	Date of IPS Document creation	Composition.date	
	Language of document	Composition.language	
	Date of last update of IPS content	Composition.event:careProvisioningEvent.period.	
	Generation of IPS content	N/A	
	Nature of the IPS	In the curent version, this information is inferred by a set of IPS data (including author,attester)	
	Healthcare providers	N/A	
	Authoring healthcare provider	Composition.author (and other resource specific elements)	
	Legitimacy	N/A	

IHE Patient Care Coordination Technical Framework Supplement – International Patient Summary (IPS)

Cen/ISO Data Elements		FHIR Resource Location	References
	Legal authenticator	Composition.attester	

7 DICOM Content Definitions

Not applicable

Appendices to Volume 3

1255 **Appendix A – IPS Gherkin Test Scripts**

This appendix shows the test scripts that will be used to guide the development of conformance testing.

A.1 IPS Content Creator CDA Option Test Script

The Test Script Used to carry out the test for the IPS Content Creator CDA Option

1260 **A.1.1 Test Steps**

- 1) GIVEN a Patient with data in a health information system that implements the IPS Content Creator with the CDA Option
- 2) WHEN a request to prepare an IPS Document.
- 3) THEN the Content Creator will create a CDA Document
- 1265 4) AND that document will conform to the CDA Document described in section PCC IPS TF-3: 6.3.1.

A.2 IPS Content Creator FHIR Option Test Script

The Test Script Used to carry out the test for the IPS Content Creator FHIR Option

A.2.1 Test Steps

- 1270 1) GIVEN a Patient with data in a health information system that implements the Content Creator with the FHIR Option
- 2) WHEN a request to prepare an IPS Document.
- 3) THEN the Content Creator will create a FHIR Document Bundle
- 1275 4) AND that document will conform to the FHIR Document described in section PCC IPS TF-3: 6.6.

A.5 IPS Content Consumer View Option Test Script

The Test Script Used to carry out the test for the IPS Content Consumer View Option.

A.5.1 Test Steps

- 1) GIVEN that a document has been selected for display.
- 1280 2) WHEN that document is rendered

- 1285
- 3) THEN the rendering meets the requirements for CDA Release 2 content presentation semantics (see Section 1.2.4 of the CDA Specification: Human readability and rendering CDA Documents) OR FHIR R4 content presentation semantics
 - 4) AND CDA Header information providing context critical information shall also be rendered in a human readable manner.
 - 5) AND the content consumer provides a mechanism to view.

A.6 IPS Content Consumer Document Import Option Test Script

The Test Script Used to carry out the test for the IPS Content Consumer Document Import Option

1290 **A.6.1 Test Steps**

- 1) GIVEN a Content Consumer that implements the Document Import Option
- 2) AND a document has been selected for import
- 3) WHEN that document is imported
- 4) THEN the Content Consumer also supports the View Option
- 1295 5) AND the Content Consumer supports local storage of the entire document
- 6) AND the document origin is tracked
- 7) AND the imported document can be viewed without retrieving it again

A.7 IPS Content Consumer Section Import Option Test Script

The Test Script Used to carry out the test for the IPS Content Consumer Section Import Option.

1300 **A.7.1 Test Steps**

- 1) GIVEN a Content Consumer that implements the Section Import Option
- 2) AND a section/resource(s) has been selected for import
- 3) WHEN that section/resource(s) is imported
- 1305 4) THEN the Content Consumer supports the import of one or more sections/resources of the document
- 5) AND the Content Consumer offers a means to copy the imported section(s) into local data structures as free text.
- 6) AND the section origin is tracked
- 7) AND the imported section can be viewed without retrieving it again

1310 **A.8 IPS Content Consumer Discrete Data Import Option Test Script**

The Test Script Used to carry out the test for the IPS Content Consumer Discrete Data Import Option.

A.8.1 Test Steps

- 1) GIVEN a Content Consumer that implements the Document Import Option
- 1315 2) AND a document has been selected for import
- 3) WHEN that document is imported
- 4) THEN the Content Consumer also supports the View Option
- 5) AND the Content Consumer supports local storage of the entire document
- 6) AND the document origin is tracked
- 1320 7) AND the imported document can be viewed without retrieving it again

Volume 4 – National Extensions

None