

## Integrating the Healthcare Enterprise



5

### IHE QRPH

## Technical Framework Supplement

10

## Quality Measure Execution – Early Hearing (QME-EH)

### Draft for Public Comment

15 Date: June 17, 2011  
Author: Lori Reed-Fourquet, Anna Orlova, Terese Finitzo  
Email: [qrph@ihe.net](mailto:qrph@ihe.net)

## Foreword

20 This is a supplement to the forthcoming IHE Quality, Research and Public Health Technical Framework. Each supplement undergoes a process of public comment and trial implementation before being incorporated into the volumes of the Technical Frameworks.

This supplement is submitted for Public Comment between June 17, 2011 and July 17, 2011. Comments are invited and may be submitted at <http://www.ihe.net/qrph/qrphcomments.cfm>. In order to be considered in development of the Trial Implementation version of the supplement comments must be received by July 17, 2011.

25 This supplement describes changes to the existing technical framework documents and where indicated amends text by addition (**bold underline**) or removal (**~~bold strikethrough~~**), as well as addition of large new sections introduced by editor's instructions to "add new text" or similar, which for readability are not bolded or underlined.

30 "Boxed" instructions like the sample below indicate to the Volume Editor how to integrate the relevant section(s) into the relevant Technical Framework volume:

<i>Replace Section X.X by the following:</i>
--

35

General information about IHE can be found at: [www.ihe.net](http://www.ihe.net)

Information about the IHE QRPH can be found at: <http://www.ihe.net/Domains/index.cfm>

Information about the structure of IHE Technical Frameworks and Supplements can be found at: <http://www.ihe.net/About/process.cfm> and <http://www.ihe.net/profiles/index.cfm>

40 The current version of the IHE Technical Framework can be found at: [http://www.ihe.net/Technical\\_Framework/index.cfm](http://www.ihe.net/Technical_Framework/index.cfm)

## CONTENTS

45	Introduction.....	5
	Profile Abstract .....	5
	Open Issues and Questions .....	5
	Closed Issues.....	5
	Volume 1 – Profiles .....	6
50	1.7 History of Annual Changes .....	6
	1.n Copyright Permission.....	6
	2.1 Dependencies among Profiles.....	6
	2.2.X Quality Measure Execution - Early Hearing (QME-EH) Profile .....	6
	X Quality Measure Execution - Early Hearing (QME-EH) Profile.....	7
55	X.1 QME-EH Actors/Transactions .....	7
	X.1.1 Actor Descriptions and Requirements.....	8
	X.1.2 Document Content Modules.....	9
	X.2 QME-EH Options.....	9
	X.3 QME-EH Actor Groupings and Profile Interactions.....	9
60	X.3.1 Content Bindings with Cross Enterprise Document Sharing, Media Interchange and Reliable Messages.....	9
	X.3.2 Notification of Document Availability (NAV) .....	10
	X.3.3 Document Digital Signature (DSG) .....	11
	X.3.4 Shared Value Set (ESVS).....	11
65	X.3.5 Document Metadata Subscription (DSUB).....	11
	X.3.6 Retrieve Process for Execution (RPE) .....	11
	X.4 QME-EH Process Flow.....	12
	X.4.1 Use Cases .....	12
	X.4.2 Process Flow.....	12
70	X.5 QME-EH Security Considerations .....	13
	X.5.1 Basic Patient Privacy Consents (BPPC).....	13
	X.5.2 Document Digital Signature (DSG) .....	14
	<Appendix A> Actor Summary Definitions.....	15
	<Appendix B> Transaction Summary Definitions .....	15
75	Glossary .....	16
	Volume 2 – Transactions .....	17
	5.0 Namespaces and Vocabularies.....	18
	5.1 IHE Format Codes .....	18
	6 QRPH Content Modules .....	19
80	6.2 Folder Content Modules.....	19
	6.2.Y Use of Folders .....	19
	6.3 HL7 Version 3.0 Content Modules .....	19
	6.3.1 CDA Document Content Modules .....	19
	6.3.2 CDA Header Content Modules .....	31

85	6.3.3 CDA Section Content Modules.....	32
	6.3.4 CDA Entry Content Modules.....	32
	6.5 QRPH Value Sets.....	32
	6.5.A JCIH-EHDI Risk Factors (LOINC).....	32
	6.5.B JCIH-EHDI Hearing Loss Risk Factors Codes .....	34
90	6.5.C JCIH-EHDI Hearing Loss Risk Factors - Procedures Codes .....	35
	6.5.D JCIH-EHDI NICU Service Delivery Location Codes.....	37
	6.5.E Newborn Hearing Procedure Codes.....	38
	6.5.F JCIH-EHDI Newborn Hearing Screening Method Codes .....	39
	6.5.G JCIH-EHDI Hearing Loss Codes .....	40
95	6.5.H JCIH-EHDI Hearing Screen Right Codes– Right .....	41
	6.5.I JCIH-EHDI Hearing Screen Left Codes.....	43
	6.5.J JCIH-EHDI Hearing Loss Diagnosis ICD Codes.....	44
	6.5.K JCIH-EHDI Newborn Hearing Loss Diagnosis Codes .....	45
	6.5.L JCIH-EHDI Reason for no Hearing Loss Diagnosis Codes(SNOMED).....	46
100	6.5.M JCIH-EHDI Newborn Hearing Loss Referrals Codes .....	48
	6.5.N JCIH-EHDI Newborn Hearing Loss Reason for no Follow-up – Patient Reason Codes.....	49
	6.5.O JCIH-EHDI Newborn Admission Type Codes .....	51
	6.5.P Joint Commission Medical Reason Codes.....	52
105	6.5.Q Joint Commission Discharge Disposition – Death Codes.....	53
	6.5.R Joint Commission Inpatient Encounter Codes.....	55
	6.5.S JCIH-EHDI Outpatient Encounter Codes .....	56
	6.5.T JCIH-EHDI Inpatient Screening Results not Performed Codes .....	57
	6.5.U JCIH-EHDI Evidence of Hearing Screening Performed Codes.....	58
110	6.5.V JCIH-EHDI Procedure Declined Value Set Codes .....	59

## 115 Introduction

### Profile Abstract

Hearing loss identified following newborn hearing screening (NHS) is considered a neuro-developmental emergency. Thus, hearing screening has received widespread acceptance by public health in the United States (US), England, Scotland and Australia. Pilot projects are underway world-wide. Yet nearly 50% of infants needing care following screening may not receive it. PCPs do not have ready access to guidance on clinical and diagnostic information to assist care coordination for the infant with suspected hearing loss. Clinical electronic health records (EHR-Ss) and public health early hearing detection and intervention information systems (EHDI-IS) are seldom interoperable and do not share information electronically. Quality Measures have been developed to support public health assessment of early hearing detection and intervention conformance to screening requirements. This Profile will also enable reporting on quality measures to assure more effective care for all children, especially those with special needs.<sup>1</sup>

### Open Issues and Questions

- 130 1. Add unknown as a LOINC code to mean no one asked about risk factors or other method to indicate that the risk factors are unknown.
2. Should the LOINC Codes reference the ‘LA’ code or the numeric? (e.g. LA10392-1) (to be resolved as part of EHCP Profile – replicated here
3. Need to review distinction between Active Problems and Discharge Diagnosis with PCC
- 135 4. RPE Process Flow and use case description is omitted at this time – alignment is pending with updated RPE specification and the use of RPE for Quality Measurement
5. 6.3.2.d Data Element Name column seems to have much more detail on conformance - should this be pulled out into a separate column or even as conformance statements after the cells in the table? Template should be revisited.

### 140 Closed Issues

---

<sup>1</sup> Buz Harlor AD, Jr, Bower C. Hearing Assessment in Infants and Children: Recommendations Beyond Neonatal Screening. Pediatrics. 2009; 124 (4): 1252-1263. URL: [www.pediatrics.org/cgi/doi/10.1542/peds.2009-1997](http://www.pediatrics.org/cgi/doi/10.1542/peds.2009-1997)

# Volume 1 – Profiles

## 1.7 History of Annual Changes

145 *Add the following bullet to the end of the bullet list in section 1.7*

- In the 2009-2010 cycle of the IHE QRPH initiative, the first Quality Measure Execution - Early Hearing (QME-EH) was developed as part of a broader integration profile: Early Hearing Detection and Intervention.
- In the 2010-2011 cycle of the IHE QRPH initiative, the Quality Measure Execution - Early Hearing (QME-EH) was extracted from this profile and published for public comment as a discrete content profile designed to support communication of Early Hearing Detection and Intervention patient-level data to support quality measurement for the EHDI programs

## 1.n Copyright Permission

*Add the following to sections 1.n:*

## 155 2.1 Dependencies among Profiles

*Add the following to Table 2-1*

QME-EH	None	None	-
--------	------	------	---

*Add the following section to section 2.2.X*

## 160 2.2.X Quality Measure Execution - Early Hearing (QME-EH) Profile

The Quality Measure Execution - Early Hearing (QME-EH) Profile describes the content needed to patient-level quality data to support quality measurement for early hearing screening and intervention including such measurement.

165 *Add Section X*

## **X Quality Measure Execution - Early Hearing (QME-EH) Profile**

170 Early Hearing Detection and Intervention (EHDI) is a public health program that directs  
hospitals to screen newborns for hearing loss prior to hospital discharge. While hospital  
screening is generally completed on well over 95% of births, nearly 50% of infants needing care  
175 following newborn hearing screening may not receive it. Screening results are not consistently  
communicated to primary care providers (PCP) by hospitals. Primary care providers do not have  
ready access to guidance on clinical and diagnostic information to assist care coordination for the  
infant with suspected hearing loss. Thus, too many infants with suspected hearing loss remain at  
180 risk for the cognitive and language delays and social and emotional isolation that can occur in the  
child with late-diagnosed hearing loss.

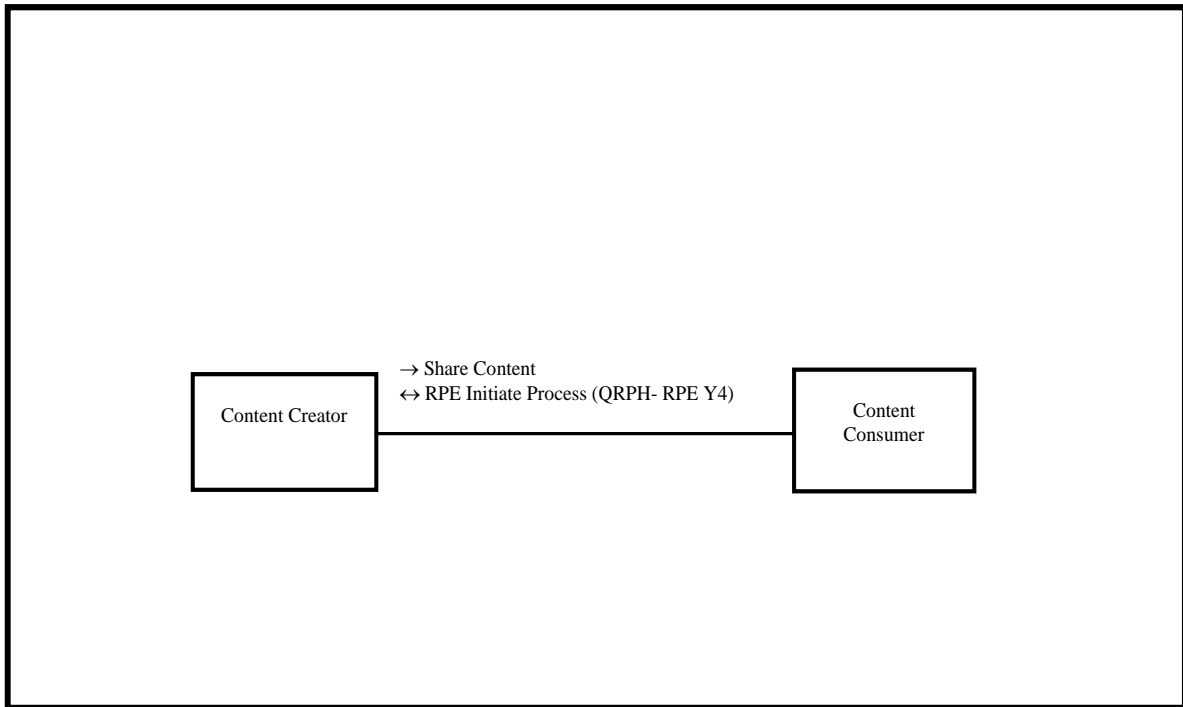
This profile, will describe an Quality Measure Execution - Early Hearing Content (QME-EH) for  
180 patient-level quality measure reporting, based on HL7 QRDA, whose content creator is may be  
the Healthcare Provider, a Value-Added HIE Service, Public Health, or other third entity, and  
whose content consumers are Quality Measurement Processing Entities. This Profile will also  
enable reporting on quality measures to assure more effective care for all children, especially  
those with special needs.<sup>2</sup> The scope of this document is facility or jurisdiction quality measure  
reporting. Reporting involving clinical attribution is out of scope at this time.

### **185 X.1 QME-EH Actors/Transactions**

Figure X.1-1 shows the actors directly involved in the QME-EH Profile and the relevant  
transactions between them. Other actors that may be indirectly involved due to their participation  
in XDS, XDR etc. are not necessarily shown.

---

<sup>2</sup> Buz Harlor AD, Jr, Bower C. Hearing Assessment in Infants and Children: Recommendations Beyond Neonatal Screening. Pediatrics. 2009; 124 (4): 1252-1263. URL: [www.pediatrics.org/cgi/doi/10.1542/peds.2009-1997](http://www.pediatrics.org/cgi/doi/10.1542/peds.2009-1997)



**Figure X.1-1 QME-EH Actor Diagram**

190

195

200

There are two actors in the QME-EH profile, the Content Creator and the Content Consumer. Content is created by a Content Creator and is to be consumed by a Content Consumer. The sharing or transmission of content from one actor to the other is addressed by the appropriate use of IHE profiles described in the groupings below and is out of scope of this profile. A Document Source, a Portable Media Creator, or Process Activity Executor may embody the Content Creator Actor. A Document Consumer, a Document Recipient, a Portable Media Importer, or a Process State Manager may embody the Content Consumer Actor. The sharing or transmission of content or updates from one actor to the other is addressed by the use of appropriate IHE profiles described in the section on Content Bindings with XDS, XDM, XDR, and RPE in QRPH TF-1:x.3.

## **X.1.1 Actor Descriptions and Requirements**

### **X.1.1.1 Content Creator**

205

The Content Creator Actor shall be responsible for the creation of content and transmission of the Quality Measure Execution - Early Hearing (QME-EH) content to a Content Consumer.

### **X.1.1.2 Content Consumer**

A Content Consumer Actor is responsible for viewing, importing, or other processing options for Quality Measure Execution - Early Hearing (QME-EH) content created by a QME-EH Content Creator Actor.

## **210 X.1.2 Document Content Modules**

### **X.1.2.1 Quality Measure Execution - Early Hearing**

All Quality Measure Execution - Early Hearing (QME-EH) content shall be structured and coded as required by the Quality Measure Execution - Early Hearing (QME-EH) content Content Module described in QRPH TF-2:6.3.2.

## **215 X.2 QME-EH Options**

Options that may be selected for this Profile are listed in the table X.2-1 along with the Actors to which they apply. Dependencies between options when applicable are specified in notes.

**Table X.2-1 QME-EH- Actors and Options**

<b>Actor</b>	<b>Options</b>	<b>Volume &amp; Section</b>
Content Consumer	View Option (See Note 1)	PCC TF-2: 3.1.1
	Document Import Option (See Note 1)	PCC TF-2: 3.1.2
	Section Import Option (See Note 1)	PCC TF-2: 3.1.3
	Discrete Data Import Option (See Note 1)	PCC TF-2: 3.1.4
Content Creator	None	

220 Note 1: The Actor shall support at least one of these options.

## **X.3 QME-EH Actor Groupings and Profile Interactions**

### **X.3.1 Content Bindings with Cross Enterprise Document Sharing, Media Interchange and Reliable Messages**

225 The QME-EH MAY be grouped with any of the XD\* transports. It is expected that the Quality Measure Execution - Early Hearing (QME-EH) document will be produced and transmitted in an environment where the physician offices and hospitals have a coordinated infrastructure that serves the information sharing needs of this community of care. Several mechanisms are supported by IHE profiles:

- 230 • A registry/repository-based infrastructure is defined by the IHE Cross Enterprise Document Sharing (XDS) and other IHE Integration Profiles such as patient

identification (PIX & PDQ) , notification of availability of documents (NAV), and Document Metadata Subscription (DSUB).

- 235 • A media-based infrastructure is defined by the IHE Cross Enterprise Document Media Interchange (XDM) profile.
- A reliable messaging-based infrastructure is defined by the IHE Cross Enterprise Document Reliable Interchange (XDR) profile.
- All of these infrastructures support Security and privacy through the use of the Consistent Time (CT) and Audit Trail and Node Authentication (ATNA) profiles.

240 For more details on these profiles, see the IHE IT Infrastructure Technical Framework. Content profiles may impose additional requirements on the transactions used when grouped with actors from other IHE Profiles.

245 Actors from the ITI XDS, XDM and XDR profiles embody the Content Creator and Content Consumer sharing function of this profile. A Content Creator or Content Consumer must be grouped with appropriate actors from the XDS, XDM or XDR profiles, and the metadata sent in the document sharing or interchange messages has specific relationships to the content of the clinical document described in the content profile.

Content	Binding	Actor	Optionality
QME-EH	Quality Measurement Document Binding to XDS, XDM and XDR Document Source	Content Creator	O
	Quality Measurement Document Binding to XDS, XDM and XDR Document Consumer	Content Consumer	O

250 NOTE: QME-EH SHALL be Grouped with XD\* or RPE as described below (section X.3.6)

### X.3.2 Notification of Document Availability (NAV)

255 A Document Source should provide the capability to issue a Send Notification Transaction per the ITI Notification of Document Availability (NAV) Integration Profile in order to notify one or more Document Consumer(s) of the availability of one or more documents (QME-EH) for retrieval. One of the Acknowledgement Request options may be used to request from a Document Consumer that an acknowledgement should be returned when it has received and processed the notification. A Document Consumer should provide the capability to receive a Receive Notification Transaction per the NAV Integration Profile in order to be notified by Document Sources of the availability of one or more documents (QME-EH) for retrieval. The Send Acknowledgement option may be used to issue a Send Acknowledgement to a Document Source that the notification was received and processed.

260

The Quality Measure Execution - Early Hearing Report may be the subject of the Notification of Document Availability in ITI TF\_2.2.12

### X.3.3 Document Digital Signature (DSG)

265 When a Content Creator Actor needs to digitally sign a document in a submission set, it may support the Digital Signature (DSG) Content Profile as a Document Source. When a Content Consumer Actor needs to verify a Digital Signature, it may retrieve the digital signature document and may perform the verification against the signed document content.

### X.3.4 Shared Value Set (ESVS)

270 A Content Creator Actor and Content Consumer Actor may support the Enhanced Shared Value Set (ESVS) Integration Profile to receive a common, uniform nomenclature managed. The Value subsets supporting this profile are described in the appendix of this document.

### X.3.5 Document Metadata Subscription (DSUB)

275 The Document Metadata Subscription (DSUB) describes the use of subscriptions within an XDS Affinity Domain or across communities. A Document Metadata Subscriber may subscribe on behalf of the Document Metadata Notification Recipient to receive notifications about the availability of documents based on specific criteria. A Document Metadata Notification Broker keeps track of the subscriptions and sends the appropriate notifications based on the registration of objects in an XDS Document Registry. Subscriptions exist for a certain period of time and can  
 280 be cancelled. A provider or public health authority may utilize DSUB to subscribe to QME-EHs and QME-EH updates.

Public health and Providers may leverage DSUB to be notified that a new Quality Measure Execution - Early Hearing (QME-EH) document is available. The Content Consumer MAY implement a Notification recipient, and Subscriber in this Binding.

285 The Quality Measure Execution - Early Hearing (QME-EH) Report may be the subject of the Document Metadata Subscription (DSUB) in the ITI TF Supplement.

### X.3.6 Retrieve Process for Execution (RPE)

290 The transactions in the RPE profile are in trial implementation and are optional for this content profile. The Retrieve Process for Execution (RPE) supports collaborative workflow or collaborative process management. A Content Creator may be grouped with the Process Activity Executor. A Content Consumer may be grouped with a Process State Manager.

Content	Binding	Actor	Optionality
QME-EH	Quality Measurement Document Binding to RPE Process Activity Executor	Content Creator	O
	Quality Measurement Document Binding to RPE Process State Manager	Content Consumer	O

NOTE: QME-EH SHALL be Grouped with RPE or XD\* as described above (Section X.3.1)

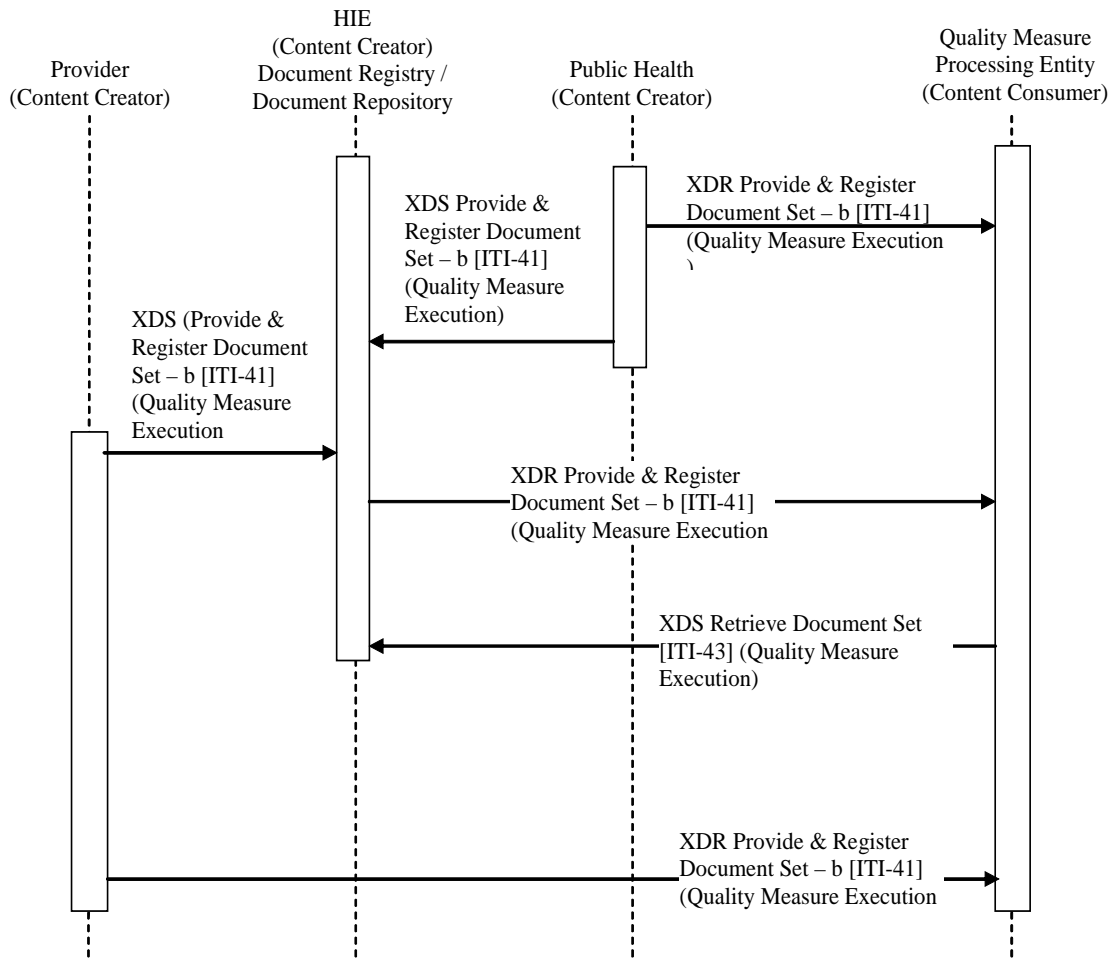
## **X.4 QME-EH Process Flow**

### **295 X.4.1 Use Cases**

1. A quality document is prepared by a provider EMR. This EMR supplies this quality measurement document (QME-EH) for analysis to the Quality Measure Processing Entity either directly (using XDR), or via an HIE (using XDS). The Quality Measure Processing Entity computes the quality measure at patient-level or aggregate levels.
- 300 2. An HIE provides a value added service of creating a QME-EH document from clinical content available within the HIE. This QME-EH is then forwarding using XDS or XDR to the Quality Measure Processing Entity. The Quality Measure Processing Entity computes the quality measure at patient-level or aggregate levels.
- 305 3. Public Health leverages a quality measurement system or service. Public Health supplies quality measurement data (QME-EH) for analysis to the Quality Measure Processing Entity either directly (using XDR), or via an HIE (using XDS). The Quality Measure Processing Entity computes the quality measure at patient-level or aggregate levels.

### **X.4.2 Process Flow**

- 310 This process flow diagram shows the movement of the Quality Measure Execution - Early Hearing (QME-EH Content Creator) supplying patient-level quality data to the Quality Measurement Processing Entity (QME-EH Content Consumer). The Content Creator is shown to be a provider, an HIE, or Public Health depending upon implementation choices.



315

Figure X.4.2-1 Basic Process Flow in QME-EH Profile

## X.5 QME-EH Security Considerations

### X.5.1 Basic Patient Privacy Consents (BPPC)

320

The Basic Patient Privacy Consents (BPPC) profile provides a mechanism to record the patient privacy consent(s), a method to mark documents with the patient privacy consent that was used to authorize the publication, and a method for document consumers to enforce the privacy consent appropriate to the use. Parental consents associated with the hearing screening workflow should be captured and communicated using BPPC, and these should be included in the QME-EH metadata.

325 **X.5.2 Document Digital Signature (DSG)**

The Document Digital Signature (DSG) profile provides a mechanism to assure non-repudiation of origin for a given document. The QME-EH may be used where required by jurisdiction policy.

330

**<Appendix A> Actor Summary Definitions**

No new actors added with this supplement

**<Appendix B> Transaction Summary Definitions**

335 No new transactions added with this supplement

## **Glossary**

*Add the following terms to the Glossary:*

**No Glossary definitions added with this supplement**

340

## Volume 2 – Transactions

*Add section 3.Y*

**No new transactions will be added with this supplement**

## 5.0 Namespaces and Vocabularies

codeSystem	codeSystemName	Description
NA		

345

### 5.1 IHE Format Codes

Profile	Format Code	Media Type	Template ID
<b>2011 Profiles</b>			
QME-EH	urn:ihe:qrph:qme:2010	Text/XML	1.3.6.1.4.1.19376.1.7.3.1.1.18.4.1

## 6 QRPH Content Modules

350

### 6.2 Folder Content Modules

*Add section 6.2.Y*

#### 6.2.Y Use of Folders

## 355 6.3 HL7 Version 3.0 Content Modules

### 6.3.1 CDA Document Content Modules

*Add section 6.3.1.A*

#### 360 6.3.2.A Early Hearing Detection and Intervention (EHDI) Patient-Level Quality Measure Report Specification 1.3.6.1.4.1.19376.1.7.3.1.1.18.1.2.1

The EHDI Patient-Level Quality Measure Report is generated using the HL7 Quality Measure Reporting Architecture (QRDA), and contains the information relevant to computing EHDI quality measures for the early screening evaluation and intervention as defined in this document. The HL7 Quality Measure Reporting Architecture is a standard specification for the communication of patient-level quality data for the purpose of computing quality metrics. This is distinguished from the HL7 Health Quality Measures Format (HQMF) which is a specification of the electronic measure expressed in terms of CDA content modules. This is intended to align quality data sources with routine clinical information sharing content.

These include:

#### 370 **Measure Set Information**

Information regarding the measure set is included to support communication of the measure set for which the patient-level quality data are submitted.

#### **Measure Information**

375 Information regarding the measures are included to indicate each of the measures for which the patient level quality data are submitted.

#### **Reporting Parameter Information**

Information regarding the Reporting Parameters are included to support indication of the reporting period.

380

**Encounter Information**

Information regarding the encounter is included in order to support the determination of encounter type, encounter dates, and disposition.

385 **Person Information**

Demographics associated with the child are included to support the determination of the child’s age with respect to the encounter.

**Procedure Information**

390 Procedures are included in order to capture hearing screening procedures, to determine some of the hearing loss risk factors, and intervention referrals.

**Problem Information**

395 Problems are included in order to capture hearing loss diagnoses, some of the hearing loss risk factors, reasons for no hearing loss diagnoses, and for reason for not performing hearing test before hospital discharge.

**Diagnosis Information**

400 Diagnoses are included in order to capture hearing loss diagnoses, some of the hearing loss risk factors, reasons for no hearing loss diagnoses, and for reason for not performing hearing test before hospital discharge.

The document content module specifies which IHE templates to use for each of the above components. The IHE PCC Technical framework contains a library of section templates that may be used within this document content module.

405

**6.3.2.B LOINC Code**

The LOINC code for this document is 55182-0 QRDA Incidence Report.

**6.3.1.C Standards**

<b>QRDA</b>	Quality Reporting Document Architecture
<b>LOINC</b>	Logical Observation Identifiers, Names and Codes

**SNOMED**

Systemized Nomenclature for Medicine

**6.3.2.D Specification**

- 410
- An **EHDI Measure QRDA** SHALL be sent in the event that a patient meets the Initial Patient Population and Denominator criteria for an EHDI measure being reported.
  - **EHDI Measures QRDA CONFORMS TO QRDA** Category 1 (templateId 2.16.840.1.113883.10.20.12).
  - **EHDI Measures QRDA** MAY be populated with the eMeasures defined by the IHE Quality Measure Definition (QMD), with locally defined measures, or any other defined measures
- 415

Data Element Name	Opt	Template ID
<p>Encounter</p> <p>The Encounter SHALL contain</p> <ul style="list-style-type: none"> <li>• ActEncounterCode drawn from HL7 ActEncounterCode values</li> <li>• priorityCode (Admission Type) using the UB04 FL14 vocabulary</li> <li>• DischargdDispositionCode using the UB04 FL17 vocabulary</li> <li>• healthCareFacility</li> </ul>	R	1.3.6.1.4.1.19376.1.5.3.1.4.14
<p><a href="#">Active Problems</a></p> <p>The Active Problems section shall use coded values for problems and diagnoses that are relevant to the hearing measures drawn from:</p> <ul style="list-style-type: none"> <li>• JCIH-EHDI Hearing Loss Risk Factors Value Set (1.3.6.1.4.1.19376.1.7.3.1.1.15.2.11)</li> <li>• JCIH-EHDI Newborn Hearing Loss Diagnosis Value Set (1.3.6.1.4.1.19376.1.7.3.1.1.15.2.14)</li> </ul> <p>If there are no active problems in this section this SHALL be indicated by the appropriate flavor of NULL</p>	R	1.3.6.1.4.1.19376.1.5.3.1.3.6
<p>Discharge Diagnosis</p> <p>The discharge diagnosis section applies to inpatient encounters, and SHALL use coded values for problems and diagnoses that are relevant to the hearing measures drawn from:</p> <ul style="list-style-type: none"> <li>• JCIH-EHDI Hearing Loss Risk Factors Value Set (1.3.6.1.4.1.19376.1.7.3.1.1.15.2.11)</li> <li>• JCIH-EHDI Newborn Hearing Loss Diagnosis Value Set</li> </ul>	R2	1.3.6.1.4.1.19376.1.5.3.1.3.7

IHE QRPH Technical Framework Supplement – Quality Measure Execution - Early Hearing (QME-EH)

Data Element Name	Opt	Template ID
(1.3.6.1.4.1.19376.1.7.3.1.1.15.2.14)		
<p><a href="#">Procedures and Interventions</a></p> <p>This section shall be present to reflect hearing procedures and interventions that have been performed or attempted.</p> <ul style="list-style-type: none"> <li>• If Hearing Screening Procedures have been performed then they SHALL be documented using a procedure code from the value set:               <ul style="list-style-type: none"> <li>○ JCIH-EHDI Hearing Screening Procedure Value Set (1.3.6.1.4.1.19376.1.7.3.1.1.15.2.5)</li> <li>○ Where hearing screening is not performed the procedure SHALL be documented with mood of 'INT' using:                   <ul style="list-style-type: none"> <li>▪ JCIH-EHDI Hearing Screening Procedure Value Set (1.3.6.1.4.1.19376.1.7.3.1.1.15.2.5)</li> </ul> </li> </ul> <p>And the reason SHALL be documented with the RSON</p> <ul style="list-style-type: none"> <li>▪ Joint Commission Medical Reason Value Set (1.3.6.1.4.1.19376.1.7.3.1.1.15.2.6) or</li> <li>▪ JCIH-EHDI Procedure Declined Value Set (1.3.6.1.4.1.19376.1.7.3.1.1.15.2.20)</li> </ul> </li> <li>• Hearing Screening assessments SHALL be documented using a procedure code from the value set:               <ul style="list-style-type: none"> <li>○ JCIH-EHDI Newborn Hearing Procedure Value Set (1.3.6.1.4.1.19376.1.7.3.1.1.15.2.17)</li> <li>○ Where hearing screening assessment results cannot be obtained, the procedure SHALL be documented with mood of 'INT' using                   <ul style="list-style-type: none"> <li>▪ JCIH-EHDI Newborn Hearing Procedure Value Set (1.3.6.1.4.1.19376.1.7.3.1.1.15.2.17)</li> </ul> </li> </ul> <p>And the reason SHALL be documented with the RSON</p> <ul style="list-style-type: none"> <li>▪ JCIH-EHDI Reason for no Hearing Loss</li> </ul> </li> </ul>	R	1.3.6.1.4.1.19376.1.5.3.1.1.13.2.11

IHE QRPH Technical Framework Supplement – Quality Measure Execution - Early Hearing (QME-EH)

Data Element Name	Opt	Template ID
<p>Diagnosis Value Set (1.3.6.1.4.1.19376.1.7.3.1.1.15.2.15)</p> <ul style="list-style-type: none"> <li>▪ Joint Commission Medical Reason Value Set (1.3.6.1.4.1.33895.1.3.0.75)</li> </ul> <ul style="list-style-type: none"> <li>• Procedures that may contribute to risk factors for hearing loss SHALL be documented using a procedure code from the value set: <ul style="list-style-type: none"> <li>○ JCIH-EHDI Hearing Loss Risk Factors - Procedures Value Set (1.3.6.1.4.1.19376.1.7.3.1.1.15.2.12)</li> </ul> </li> <li>• Procedures that have been performed that refer the patient for follow-up care for hearing loss SHALL be documented using a procedure code from the value set: <ul style="list-style-type: none"> <li>○ JCIH-EHDI Newborn Hearing Loss Referrals Value Set (1.3.6.1.4.1.19376.1.7.3.1.1.15.2.16)</li> <li>○ Where hearing referral cannot be obtained, the procedure SHALL be documented with mood of 'INT' using <ul style="list-style-type: none"> <li>▪ JCIH-EHDI Newborn Hearing Loss Referrals Value Set (1.3.6.1.4.1.19376.1.7.3.1.1.15.2.16)</li> </ul> </li> </ul> </li> </ul> <p>And the reason SHALL be documented with the RSON</p> <ul style="list-style-type: none"> <li>▪ JCIH-EHDI Newborn Hearing Loss Reason for no Follow-up Patient Reason (1.3.6.1.4.1.19376.1.7.3.1.1.15.2.7)</li> <li>▪ Joint Commission Medical Reason Value Set (1.3.6.1.4.1.33895.1.3.0.75)</li> </ul>		
<p><b>Results</b></p> <p>The Results shall use coded values for recording hearing screening results that are relevant to the hearing measures.</p> <ul style="list-style-type: none"> <li>• The method of hearing screening SHALL be recorded in methodCode using a coded value drawn from: <ul style="list-style-type: none"> <li>○ Newborn Hearing Screening Method Value Set (1.3.6.1.4.1.19376.1.7.3.1.1.15.2.4)</li> </ul> </li> <li>• The Hearing Screening Procedure for left and right ear screening SHALL be recorded in Result Type and SHALL use a coded value drawn from:</li> </ul>	R	1.3.6.1.4.1.19376.1.5.3.1.3.27

Data Element Name	Opt	Template ID
<ul style="list-style-type: none"> <li>○ JCIH-EHDI Hearing Screen Left Value Set (1.3.6.1.4.1.19376.1.7.3.1.1.15.2.8)</li> <li>○ JCIH-EHDI Hearing Screen Right Value Set (1.3.6.1.4.1.19376.1.7.3.1.1.15.2.9)</li> <li>• The Hearing Screening Results SHALL be recorded as a coded value drawn from :                             <ul style="list-style-type: none"> <li>○ JCIH-EHDI Hearing Loss Value Set (1.3.6.1.4.1.19376.1.7.3.1.1.15.2.21)</li> <li>○ JCIH-EHDI Evidence of Hearing Screening Performed (1.3.6.1.4.1.19376.1.7.3.1.1.15.2.19)</li> </ul> </li> </ul>		

**C[1] At least 1 of these measures SHALL be present**

**C[2] May be required by jurisdiction**

### 6.3.2.Y.5 Conformance

420 QRDA documents that conform to the requirements of this content module shall indicate their conformance by the inclusion of the appropriate 2.16.840.1.113883.10.20.12 elements in the header of the document. This is shown in the sample document below.

#### Sample EHDI Patient-Level Quality Measure Report

425 A sample Quality Measure Execution - Early Hearing for EHDI can be found at: [ftp://ftp.ihe.net/Quality/2011\\_2012\\_YR\\_5/ORPH Technical Committee/Profiles in Progress/QME/ QRDAQME Sample.xml](ftp://ftp.ihe.net/Quality/2011_2012_YR_5/ORPH_Technical_Committee/Profiles_in_Progress/QME/QRDAQME_Sample.xml).

```
430 <ClinicalDocument xmlns="urn:hl7-org:v3" xmlns:voc="urn:hl7-org:v3/voc"
xmlns:xsi="http://www.w3.org/2001/XMLSchema-instance" xsi:schemaLocation="urn:hl7-org:v3
CDA.xsd">
    <typeId root="2.16.840.1.113883.1.3" extension="POCD_HD000040" />
    <!-- QRDA Category I generic template ID. -->
    <templateId root="2.16.840.1.113883.10.20.12" />

    <id root="f2d5f971-d67a-4456-8833-213f01331ca0" />
435 <!-- QRDA document type code -->
    <code code="55182-0" codeSystem="2.16.840.1.113883.6.1"
codeSystemName="LOINC" displayName="Quality Measure Report" />
    <title>Quality Measure Report</title>
    <effectiveTime value="20091005" />
440 <confidentialityCode codeSystem="2.16.840.1.113883.5.25" code="N" />
    <languageCode code="en-US" />
    <!-- This is the patient for which the report is describing. -->
    :
    <component>
445 <structuredBody>
<!--
*****
Measure Set Section
*****
450 -->
    <component>
        <section>
            <!-- QRDA EHDI Version 1 Measure Set templateId -->
            <templateId root="1.3.6.1.4.1.19376.1.7.3.1.1.17.1.1.1.2" />
455 <code code="55185-3" codeSystem="2.16.840.1.113883.6.1"
displayName="MEASURE SET" />
                <title>Measure Set: Early Hearing Detection and
Intervention (EHDI)</title>
                <text>
460 <list>
<item>The Early Hearing Detection and Intervention (EHDI) measure set is a set of 8 measures
assessing specific elements of the early hearing screening, care and intervention provided to
newborns that have been shown to affect outcomes. </item>
                </list>
465 </text>
<!--
```

```
*****
Measure Section
*****
470 -->
      <component>
      <section>
      <!-- Hearing Screening prior to hospital discharge (EHDI-1a). -->
      <templated root=" 1.3.6.1.4.1.19376.1.7.3.1.1.17.1.1.2.2" />
475 <!-- Hearing screening refer rate at hospital discharge (EHDI-1b). -->
      <templated root=" 1.3.6.1.4.1.19376.1.7.3.1.1.17.1.2.2.2" />
      <code code="55186-1" codeSystem="2.16.840.1.113883.6.1" />
      <title>Measure Section</title>
      <text>
480 :
      <list>
      <item> EHDI-1a This measure assesses the percentage of births that have been
screened for hearing loss before hospital discharge.</item>
      </list>
485 <list>
      <item> EHDI-1b: This measure assesses the percentage of all newborn infants who fail
initial screening and fail any subsequent rescreening before hospital discharge. These newborn
will be referred to additional re-screening or audiology evaluation based on jurisdictional
rules.</item>
490 </list>
      </text>
      :
      <entry typeCode="DRIV">
      <act classCode="ACT" moodCode="DEF">
495 <code code="1.3.6.1.4.1.19376.1.7.3.1.1.17.1.1.2.3" codeSystem="
1.3.6.1.4.1.19376.1.7.3.1.1.17.1.1.1" codeSystemName="IHE EHDI Measure Act Code system"
displayName=" Hearing Screening prior to hospital discharge V1.0" />
      <text> Hearing Screening prior to hospital discharge </text>
      <statusCode code="completed" />
500 </act>
      </entry>
      <entry typeCode="DRIV">
      <act classCode="ACT" moodCode="DEF">
      <code code=" 1.3.6.1.4.1.19376.1.7.3.1.1.17.1.2.2.3" codeSystem="
505 1.3.6.1.4.1.19376.1.7.3.1.1.17.1.1.1" codeSystemName="IHE EHDI Measure Act Code system"
displayName=" Hearing screening refer rate at hospital discharge V1.0" />
```

```
510     <text> Hearing screening refer rate at hospital discharge </text>
        <statusCode code="completed" />
        </act>
        </entry>
<!--
*****
Reporting Parameters
*****
515 -->
<component>
  <section>
    <code code="55187-9" codeSystem="2.16.840.1.113883.6.1" />
    <title>Reporting Parameters</title>
520    <text>Reporting period: 01 October 2010 - 31 March 2011</text>
    <entry>
      <act classCode="ACT" moodCode="EVN">
        <code code="252116004" codeSystem="2.16.840.1.113883.6.96"
525        displayName="Observation Parameters" />
        <effectiveTime>
          <low value="20101001"/>
          <!-- The first day of the period reported. -->                                <high
value="20110131"/>
          <!-- The last day of the period reported. -->
530        </effectiveTime>
        </act>
        </entry>
        </section>
        </component>
535 <!--
*****
Patient Data
*****
540 -->
<component>
  <section>
    <templateId root="2.16.840.1.113883.10.20.17.2.4" />
    <code code="55188-7" codeSystem="2.16.840.1.113883.6.1" />
    <title>Patient Data Section</title>
545 <component>
  <!--
```

```
550 <component>
    <section>
      <templated root='1.3.6.1.4.1.19376.1.5.3.1.4.14' />
      <!-- Required Encounter Section content -->
    </section>
  </component>
  <component>
    <section>
555   <templated root='1.3.6.1.4.1.19376.1.5.3.1.3.6' />
      <!-- Required Active Problems Section content -->
    </section>
  </component>
  <component>
560   <section>
      <templated root='1.3.6.1.4.1.19376.1.5.3.1.3.7' />
      <!-- Required Discharge Diagnosis Section content -->
    </section>
  </component>
565   <component>
      <section>
          <templated root='1.3.6.1.4.1.19376.1.5.3.1.1.13.2.11' />
          <!-- Required Procedures and Interventions Section content -->
        </section>
      </component>
570   <component>
      <section>
          <templated root='1.3.6.1.4.1.19376.1.5.3.1.3.27' />
          <!-- Required Results Section content -->
        </section>
575   </component>
  </structuredBody></component>
</ClinicalDocument>
```

### 6.3.2.Y.6 Schematron

```
580 <pattern name='Template_1.3.6.1.4.1.19376.1.5.3.1.1.20.1.1'>
  <rule context='*[cda:templated/@root="1.3.6.1.4.1.19376.1.5.3.1.1.20.1.1"]'>
    <!-- Verify that the template id is used on the appropriate type of object -->
    <assert test='../cda:ClinicalDocument'>
```

```
585 Error: The EHDI Patient-Level Quality Measure Report can only be used on Clinical
Documents.
</assert>
<!-- Verify the document type code -->
<assert test='cda:code[@code = "55182-0"]>
590 Error: The document type code of a EHDI Patient-Level Quality Measure Report must be
55182-0
</assert>
<assert test='cda:code[@codeSystem = "2.16.840.1.113883.6.1"]>
Error: The document type code must come from the LOINC code
system (2.16.840.1.113883.6.1).
595 </assert>
<assert test='./cda:templateId[@root = "1.3.6.1.4.1.19376.1.7.3.1.1.18.1.2.1"]>
<!-- Verify that all required data elements are present -->
Error: The EHDI Patient-Level Quality Measure Report must contain a(n) Measure Set
Information Section.
600 See http://wiki.ihe.net/index.php?title=1.3.6.1.4.1.19376.1.5.3.1.1.20.1.1
</assert>
<assert test='./cda:templateId[@root = "1.3.6.1.4.1.19376.1.5.3.1.4.14"]>
<!-- Verify that all required data elements are present -->
Error: The EHDI Patient-Level Quality Measure Report must contain a(n) Encounter Section.
605 See http://wiki.ihe.net/index.php?title=1.3.6.1.4.1.19376.1.5.3.1.1.20.1.1
</assert>
<assert test='./cda:templateId[@root = "1.3.6.1.4.1.19376.1.5.3.1.1.13.2.11"]>
<!-- Verify that all required data elements are present -->
Error: The EHDI Patient-Level Quality Measure Report must contain a(n) Procedures and
610 Interventions Section.
See http://wiki.ihe.net/index.php?title=1.3.6.1.4.1.19376.1.5.3.1.1.20.1.1
</assert>
<assert test='./cda:templateId[@root = "1.3.6.1.4.1.19376.1.5.3.1.3.27"]>
<!-- Verify that all required data elements are present -->
615 Error: The EHDI Patient-Level Quality Measure Report must contain a(n) Results Section.
See http://wiki.ihe.net/index.php?title=1.3.6.1.4.1.19376.1.5.3.1.1.20.1.1
</assert>
<assert test='./cda:templateId[@root = "1.3.6.1.4.1.19376.1.5.3.1.1.1"]>
<!-- Verify that all required data elements are present -->
620 Manual: This EHDI Patient-Level Quality Measure Report does not contain a(n)
ClinicalDocument/patient/birthTime
See http://wiki.ihe.net/index.php?title=1.3.6.1.4.1.19376.1.5.3.1.1.20.1.1
</assert>
```

```
625 <assert test='//cda:templated[@root = "1.3.6.1.4.1.19376.1.5.3.1.3.6"]>
    <!-- Manually verify conditional elements -->
    Manual: This EHDI Patient-Level Quality Measure Report does not contain a(n) Active
    Problems Section.
    See http://wiki.ihe.net/index.php?title=1.3.6.1.4.1.19376.1.5.3.1.1.20.1.1
</assert>
630 <assert test='//cda:templated[@root = "1.3.6.1.4.1.19376.1.5.3.1.3.7"]>
    <!-- Note any missing conditional elements -->
    Note: This EHDI Patient-Level Quality Measure Report does not contain a(n) Discharge
    Diagnosis Section.
    See http://wiki.ihe.net/index.php?title=1.3.6.1.4.1.19376.1.5.3.1.1.20.1.1
635 </assert>
    <assert test='//cda:templated[@root = "1.3.6.1.4.1.19376.1.7.3.1.1.18.1.1.2.2"]>
    <!-- Note any missing conditional elements -->
    Note: This EHDI Patient-Level Quality Measure Report does not contain a(n) Measure
    Information – EHDI-1a Section.
640 See http://wiki.ihe.net/index.php?title=1.3.6.1.4.1.19376.1.5.3.1.1.20.1.1
    </assert>
    <assert test='//cda:templated[@root = "1.3.6.1.4.1.19376.1.7.3.1.1.18.1.2.2.2"]>
    <!-- Verify that all required data elements are present -->
    Error: The EHDI Patient-Level Quality Measure Report must contain a(n) Measure
645 Information – EHDI-1b Section.
    See http://wiki.ihe.net/index.php?title=1.3.6.1.4.1.19376.1.5.3.1.1.20.1.1
    </assert>
    <assert test='//cda:templated[@root = ".3.6.1.4.1.19376.1.7.3.1.1.18.1.3.2.2"]>
    <!-- Verify that all required data elements are present -->
650 Error: The EHDI Patient-Level Quality Measure Report must contain a(n) Measure
    Information – EHDI-1c Section.
    See http://wiki.ihe.net/index.php?title=1.3.6.1.4.1.19376.1.5.3.1.1.20.1.1
    </assert>
    <assert test='//cda:templated[@root = "1.3.6.1.4.1.19376.1.7.3.1.1.18.1.4.2.2"]>
655 <!-- Verify that all conditional data elements are present -->
    Manual: The EHDI Patient-Level Quality Measure Report does not contain a(n) Measure
    Information – EHDI-2a Section.
    See http://wiki.ihe.net/index.php?title=1.3.6.1.4.1.19376.1.5.3.1.1.20.1.1
    </assert>
660 <assert test='//cda:templated[@root = "1.3.6.1.4.1.19376.1.7.3.1.1.18.1.5.2.2"]>
    <!-- Manually verify conditional elements -->
    Manual: This EHDI Patient-Level Quality Measure Report does not contain a(n) Measure
    Information – EHDI-2b Section.
```

```

665 See http://wiki.ihe.net/index.php?title=1.3.6.1.4.1.19376.1.5.3.1.1.20.1.1
</assert>
<assert test='//cda:templateId[@root = "1.3.6.1.4.1.19376.1.7.3.1.1.18.1.6.2.2"]>
  <!-- Manually verify conditional elements -->
  Manual: This EHDl Patient-Level Quality Measure Report does not contain a(n) Measure
Information – EHDl-3 Section
670 See http://wiki.ihe.net/index.php?title=1.3.6.1.4.1.19376.1.5.3.1.1.20.1.1
</assert>
<assert test='//cda:templateId[@root = "1.3.6.1.4.1.19376.1.7.3.1.1.18.1.7.2.2"]>
  <!-- Manually verify conditional elements -->
  Manual: This EHDl Patient-Level Quality Measure Report does not contain a(n) Measure
Information – EHDl-4a Section
675 See http://wiki.ihe.net/index.php?title=1.3.6.1.4.1.19376.1.5.3.1.1.20.1.1
</assert>
<assert test='//cda:templateId[@root = "1.3.6.1.4.1.19376.1.7.3.1.1.18.1.8.2.2"]>
  <!-- Manually verify conditional elements -->
680 Manual: This EHDl Patient-Level Quality Measure Report does not contain a(n) Measure
Information – EHDl-4b Section
  See http://wiki.ihe.net/index.php?title=1.3.6.1.4.1.19376.1.5.3.1.1.20.1.1
  </assert>
</rule>
685 </pattern>

```

### 6.3.2 CDA Header Content Modules

*Add section 6.3.2.B*

#### 6.3.2.B QME-EH Header Content Module

690 Table 6.3.2.A-1 lists CDA header Sections required for the EHCP document. Table 6.3.1.A-2 is the specification for sections in the Header attribute requirements.

**Table 6.3.2.A-1 Header Sections for QME-EH Document**

Data Element Name	Opt	Template ID
Measure Set Information	R	1.3.6.1.4.1.19376.1.7.3.1.1.18.1.1
Measure Information – EHDl-1a	C[1]	1.3.6.1.4.1.19376.1.7.3.1.1.18.2.2.2
Measure Information – EHDl-1b	C[1]	1.3.6.1.4.1.19376.1.7.3.1.1.18.3.2.2
Measure Information – EHDl-1c	C[1]	1.3.6.1.4.1.19376.1.7.3.1.1.18.4.2.2

Data Element Name	Opt	Template ID
Personal Info	R	1.3.6.1.4.1.19376.1.5.3.1.1.1

**Table 6.3.2.A-2 Header Attributes for EHCP Document**

Personal Info: Header Template ID 1.3.6.1.4.1.19376.1.5.3.1.1.1	
Name	R
Addr	R
Contact	R
Date/Time of Birth	R

695 **6.3.3 CDA Section Content Modules**

No new content modules defined

**6.3.4 CDA Entry Content Modules**

No new content modules defined

**6.5 QRPH Value Sets**

700 *Add section 6.5.A NOTE: same value set content used for EHCP Profile – add one copy only*

The value subsets provided in this section are used both to constrain the CDA content, and to assert measure logic. These may be supported by the Value Set Repository actor for value set management as defined by the IHE ITI TF Enhances Sharing of Value Sets (ESVS) profile.

**6.5.A JCIH-EHDI Risk Factors (LOINC)**

705 **6.5.A.1 Metadata**

Metadata Element	Description	Mandatory
Identifier	This is the unique identifier of the value set	1.3.6.1.4.1.19376.1.7.3.1.1.15.2.18
Name	This is the name of the value set	JCIH-EHDI Risk Factors (LOINC) Value Set
Source	This is the source of the value set, identifying the originator or publisher of the information	IHE Quality Research and Public Health Domain

## IHE QRPH Technical Framework Supplement – Quality Measure Execution - Early Hearing (QME-EH)

Metadata Element	Description	Mandatory
Purpose	Brief description about the general purpose of the value set	To Reflect the Risk Factors associated with hearing loss using LOINC concepts
Definition	A text definition describing how concepts in the value set were selected	<b>Extensional definition:</b> The value set was constructed by enumerating the codes from LOINC
Source URI	Most sources also have a URL or document URI that provides further details regarding the value set.	<a href="http://loinc.org">http://loinc.org</a>
Version	A string identifying the specific version of the value set.	Version 1.0
Status	Active (Current) or Inactive	Active
Effective Date	The date when the value set is expected to be effective	8/1/2010
Expiration Date	The date when the value set is no longer expected to be used	N/A
Creation Date	The date of creation of the value set	8/1/2010
Revision Date	The date of revision of the value set	N/A
Groups	The identifiers of the groups that include this value set. A group may also have an OID assigned.	IHE EHDI

### 6.5.A.2 JCIH-EHDI Risk Factors (LOINC) Value Set

#### LOINC 58232-0

Sequence	LOINC Code	Description
1	LA137-2	None
2	LA12667-4	Caregiver concern about hearing
3	LA12668-2	Family Hx of hearing loss
4	LA12669-0	NICU stay > 5 days
5	LA12670-8	ECMO
6	LA12671-6	Assisted ventilation
7	LA12672-4	Ototoxic medication use
8	LA12673-2	Exchange transfusion for Hyperbilirubinemia
9	LA12674-0	In utero infection(s)
10	LA12675-7	Craniofacial anomalies
11	LA12681-5	Physical findings of syndromes that include hearing loss
12	LA12676-5	Syndromes associated with hearing loss
13	LA12677-3	Neurodegenerative disorders
14	LA12678-1	Postnatal infections

15	LA12679-9	Head trauma
16	LA6172-6	Chemotherapy

710 **6.5.B JCIH-EHDI Hearing Loss Risk Factors Codes**

**6.5.B.1 Metadata**

Metadata Element	Description	Mandatory
Identifier	This is the unique identifier of the value set	1.3.6.1.4.1.19376.1.7.3.1.1.15.2.11
Name	This is the name of the value set	JCIH-EHDI Hearing Loss Risk Factors Value Set
Source	This is the source of the value set, identifying the originator or publisher of the information	IHE Quality Research and Public Health Domain
Purpose	Brief description about the general purpose of the value set	To Reflect the Risk Factors associated with hearing loss using SNOMED-CT Finding/Situation concepts
Definition	A text definition describing how concepts in the value set were selected	<b>Extensional definition:</b> The value set was constructed by enumerating the codes from SNOMED-CT
Source URI	Most sources also have a URL or document URI that provides further details regarding the value set.	<a href="http://www.nlm.nih.gov/research/umls/Snomed/snomed_main.html">http://www.nlm.nih.gov/research/umls/Snomed/snomed_main.html</a>
Version	A string identifying the specific version of the value set.	Version 1.0
Status	Active (Current) or Inactive	Active
Effective Date	The date when the value set is expected to be effective	8/1/2010
Expiration Date	The date when the value set is no longer expected to be used	N/A
Creation Date	The date of creation of the value set	8/1/2010
Revision Date	The date of revision of the value set	N/A
Groups	The identifiers of the groups that include this value set. A group may also have an OID assigned.	IHE EHDI

**6.5.B.2 JCIH-EHDI Hearing Loss Risk Factors Value Set**

*SNOMED-CT Hearing Loss Risk Factors Value Set*

Sequence	SNOMED-CT Code	Description
1	439750006	Family history of hearing loss (situation)
2	441899004	History of therapy with ototoxic medication (situation)
3	276687002	Conjugated hyperbilirubinemia in infancy (disorder)
4	281610001	Neonatal hyperbilirubinemia (disorder)
5	281612009	Neonatal conjugated hyperbilirubinemia (disorder)
6	281611002	Neonatal unconjugated hyperbilirubinemia (disorder)
7	206363004	Intra-amniotic fetal infection (disorder) (Deprecated, replaced by 11618000)
8	206331005	Infections specific to perinatal period (disorder)
9	206005002	Fetus or neonate affected by maternal infection (disorder)
10	80690008	Degenerative disease of the central nervous system (disorder)
11	178280004	Postnatal infection (disorder)
12	312972009	Neonatal extracranial head trauma (disorder)
13	161653008	History of - chemotherapy (situation)
14	11618000	Intra-amniotic infection of fetus (disorder) (Replaces 206363004)

715

### 6.5.B.3 Pending Codes for SNOMED-CT Findings/Situation to support Risk Factors

NOTE: Additional specificity for this value set is under way and will result in an update to this value set. Further coded values are sought to represent the following:

720

None
Caregiver concern about hearing
Craniofacial anomalies
Physical findings of syndromes that include hearing loss
Syndromes associated with hearing loss

### 6.5.C JCIH-EHDI Hearing Loss Risk Factors - Procedures Codes

#### 6.5.C.1 Metadata

Metadata Element	Description	Mandatory
Identifier	This is the unique identifier of the value set	1.3.6.1.4.1.19376.1.7.3.1.1.15.2.12

IHE QRP Technical Framework Supplement – Quality Measure Execution - Early Hearing (QME-EH)

Metadata Element	Description	Mandatory
Name	This is the name of the value set	JCIH-EHDI Hearing Loss Risk Factors - Procedures Value Set
Source	This is the source of the value set, identifying the originator or publisher of the information	IHE Quality Research and Public Health Domain
Purpose	Brief description about the general purpose of the value set	To Reflect the Risk Factors Procedures associated with hearing loss using SNOMED-CT
Definition	A text definition describing how concepts in the value set were selected	<b>Extensional definition:</b> The value set was constructed by enumerating the codes from SNOMED-CT
Source URI	Most sources also have a URL or document URI that provides further details regarding the value set.	<a href="http://www.nlm.nih.gov/research/umls/Snomed/snomed_main.html">http://www.nlm.nih.gov/research/umls/Snomed/snomed_main.html</a>
Version	A string identifying the specific version of the value set.	Version 1.0
Status	Active (Current) or Inactive	Active
Effective Date	The date when the value set is expected to be effective	8/1/2010
Expiration Date	The date when the value set is no longer expected to be used	N/A
Creation Date	The date of creation of the value set	8/1/2010
Revision Date	The date of revision of the value set	N/A
Groups	The identifiers of the groups that include this value set. A group may also have an OID assigned.	IHE EHDI

**6.5.C.2 JCIH-EHDI Hearing Loss Risk Factors - Procedures Value**

725 *Hearing Loss Risk Factors - Procedures Set*

Sequence	SNOMED-CT Code	Description
1	266700009	Assisted breathing (procedure)
2	233573008	Extracorporeal membrane oxygenation (procedure)

## 6.5.D JCIH-EHDI NICU Service Delivery Location Codes

### 6.5.D.1 Metadata

730

Metadata Element	Description	Mandatory
Identifier	This is the unique identifier of the value set	1.3.6.1.4.1.19376.1.7.3.1.1.15.2.13
Name	This is the name of the value set	JCIH-EHDI NICU Service Delivery Location Value Set
Source	This is the source of the value set, identifying the originator or publisher of the information	IHE Quality Research and Public Health Domain
Purpose	Brief description about the general purpose of the value set	To Reflect that the newborn was treated in the NICU reflecting hearing loss risk
Definition	A text definition describing how concepts in the value set were selected	<b>Extensional definition:</b> The value set was constructed by enumerating the codes from HL7ServiceDeliveryLocation
Source URI	Most sources also have a URL or document URI that provides further details regarding the value set.	<a href="http://www.hl7.org">http://www.hl7.org</a>
Version	A string identifying the specific version of the value set.	Version 1.0
Status	Active (Current) or Inactive	Active
Effective Date	The date when the value set is expected to be effective	8/1/2010
Expiration Date	The date when the value set is no longer expected to be used	N/A
Creation Date	The date of creation of the value set	8/1/2010
Revision Date	The date of revision of the value set	N/A
Groups	The identifiers of the groups that include this value set. A group may also have an OID assigned.	IHE EHDI

### 6.5.D.2 JCIH-EHDI NICU Service Delivery Location Value Set

*NICU Service Delivery Location Value Set*

Sequence	HL7 ServiceDeliveryLocation	Description
1	1039-7	Neonatal critical care unit [Level II/III]

2	1040-5	Neonatal critical care unit [Level III]
3	1037-1	Neonatal unit Neonatal unit
4	1041-3	Step down neonatal ICU [Level II]

## 735 6.5.E Newborn Hearing Procedure Codes

### 6.5.E.1 Metadata

Metadata Element	Description	Mandatory
Identifier	This is the unique identifier of the value set	1.3.6.1.4.1.19376.1.7.3.1.1.15.2.17
Name	This is the name of the value set	JCIH-EHDI Newborn Hearing Procedure Value Set
Source	This is the source of the value set, identifying the originator or publisher of the information	IHE Quality Research and Public Health Domain
Purpose	Brief description about the general purpose of the value set	To Reflect the type of newborn hearing procedure identified using SNOMED-CT Procedure codes (includes both screening and other tests and examinations)
Definition	A text definition describing how concepts in the value set were selected	<b>Extensional definition:</b> The value set was constructed by enumerating the codes from SNOMED-CT
Source URI	Most sources also have a URL or document URI that provides further details regarding the value set.	<a href="http://www.nlm.nih.gov/research/umls/Snomed/snomed_main.html">http://www.nlm.nih.gov/research/umls/Snomed/snomed_main.html</a>
Version	A string identifying the specific version of the value set.	Version 1.0
Status	Active (Current) or Inactive	Active
Effective Date	The date when the value set is expected to be effective	8/1/2010
Expiration Date	The date when the value set is no longer expected to be used	N/A
Creation Date	The date of creation of the value set	8/1/2010
Revision Date	The date of revision of the value set	N/A
Groups	The identifiers of the groups that include this value set. A group may also have an OID assigned.	IHE EHDI

### 6.5.E.2 JCIH-EHDI Newborn Hearing Procedure Value Set

#### *Newborn Hearing Screening Procedure Value Set:*

740

Sequence	SNOMED-CT Code	Description
1	427247008	Hearing assessment (procedure)
2	398171003	Hearing examination (procedure)
3	417491009	Neonatal hearing test (procedure)
4	252957005	Children's hearing test (procedure)
5	60151004	Neonatal screening (procedure)
6	170198007	Child examination: hearing (procedure)
7	252587007	Performance test of hearing (procedure)
8	247299004	General appraisal of hearing (procedure)

### 6.5.F JCIH-EHDI Newborn Hearing Screening Method Codes

#### 6.5.F.1 Metadata

Metadata Element	Description	Mandatory
Identifier	This is the unique identifier of the value set	1.3.6.1.4.1.19376.1.7.3.1.1.15.2.4
Name	This is the name of the value set	JCIH-EHDI Newborn Hearing Screening Method Value Set
Source	This is the source of the value set, identifying the originator or publisher of the information	IHE Quality Research and Public Health Domain
Purpose	Brief description about the general purpose of the value set	To Reflect the type of newborn hearing screening procedure identified using LOINC answer codes
Definition	A text definition describing how concepts in the value set were selected	<b>Extensional definition:</b> The value set was constructed by enumerating the codes from LOINC
Source URI	Most sources also have a URL or document URI that provides further details regarding the value set.	<a href="http://loinc.org">http://loinc.org</a>
Version	A string identifying the specific version of the value set.	Version 1.0
Status	Active (Current) or Inactive	Active

Metadata Element	Description	Mandatory
Effective Date	The date when the value set is expected to be effective	8/1/2010
Expiration Date	The date when the value set is no longer expected to be used	N/A
Creation Date	The date of creation of the value set	8/1/2010
Revision Date	The date of revision of the value set	N/A
Groups	The identifiers of the groups that include this value set. A group may also have an OID assigned.	IHE EHDI

745 **6.5.F.2 JCIH-EHDI Newborn Hearing Screening Method Value Set**

*Newborn Hearing Screening Method Value Set:*

*LOINC 54106-0*

Sequence	LOINC Code	Answer Code	Description
1	LA10387-1	AABR	Automated auditory brainstem response
2	LA10388-9	ABR	Auditory brain stem response
3	LA10389-7	OAE	Otoacoustic emissions
4	LA10390-5	DPOAE	Distortion product otoacoustic emissions
5	LA10391-3	TOAE	Transient otoacoustic emissions
6	LA12406-7		Methodology unknown

**6.5.G JCIH-EHDI Hearing Loss Codes**

750 **6.5.G.1 Metadata**

Metadata Element	Description	Mandatory
Identifier	This is the unique identifier of the value set	1.3.6.1.4.1.19376.1.7.3.1.1.15.2.21
Name	This is the name of the value set	JCIH-EHDI Hearing Loss Value Set
Source	This is the source of the value set, identifying the originator or publisher of the information	IHE Quality Research and Public Health Domain

Metadata Element	Description	Mandatory
Purpose	Brief description about the general purpose of the value set	To Reflect hearing loss based upon the EHDI results reported using LOINC answer lists
Definition	A text definition describing how concepts in the value set were selected	<b>Extensional definition:</b> The value set was constructed by enumerating the codes from LOINC
Source URI	Most sources also have a URL or document URI that provides further details regarding the value set.	<a href="http://loinc.org">http://loinc.org</a>
Version	A string identifying the specific version of the value set.	Version 1.0
Status	Active (Current) or Inactive	Active
Effective Date	The date when the value set is expected to be effective	8/1/2010
Expiration Date	The date when the value set is no longer expected to be used	N/A
Creation Date	The date of creation of the value set	8/1/2010
Revision Date	The date of revision of the value set	N/A
Groups	The identifiers of the groups that include this value set. A group may also have an OID assigned.	IHE EHDI

### 6.5.G.2 JCIH-EHDI Hearing Loss Value Set

*LOINC 54108-6*

*Hearing Loss Value Set*

Sequence	LOINC Code	Answer Code	Description	Global ID	Global ID Code System
1	LA10393-9	183924009	Refer		

755

### 6.5.H JCIH-EHDI Hearing Screen Right Codes– Right

#### 6.5.H.1 Metadata

Metadata Element	Description	Mandatory
Identifier	This is the unique identifier of the value set	1.3.6.1.4.1.19376.1.7.3.1.1.15.2.9

Metadata Element	Description	Mandatory
Name	This is the name of the value set	JCIH-EHDI Hearing Screen Right Value Set
Source	This is the source of the value set, identifying the originator or publisher of the information	IHE Quality Research and Public Health Domain
Purpose	Brief description about the general purpose of the value set	To Reflect the right ear EHDI screening using LOINC in result type
Definition	A text definition describing how concepts in the value set were selected	<b>Extensional definition:</b> The value set was constructed by enumerating the codes from LOINC
Source URI	Most sources also have a URL or document URI that provides further details regarding the value set.	<a href="http://loinc.org">http://loinc.org</a>
Version	A string identifying the specific version of the value set.	Version 1.0
Status	Active (Current) or Inactive	Active
Effective Date	The date when the value set is expected to be effective	8/1/2010
Expiration Date	The date when the value set is no longer expected to be used	N/A
Creation Date	The date of creation of the value set	8/1/2010
Revision Date	The date of revision of the value set	N/A
Groups	The identifiers of the groups that include this value set. A group may also have an OID assigned.	IHE EHDI

### 6.5.H.2 JCIH-EHDI Hearing Screen Right Value Set

760 *NB hearing scn -R: Result Type*

*Hearing Screen Right Value Set*

Sequence	LOINC Code	Description
1	53109-4	Newborn Hearing Screen Right

## 6.5.I JCIH-EHDI Hearing Screen Left Codes

### 6.5.I.1 Metadata

765

Metadata Element	Description	Mandatory
Identifier	This is the unique identifier of the value set	1.3.6.1.4.1.19376.1.7.3.1.1.15.2.8
Name	This is the name of the value set	JCIH-EHDI Hearing Screen Left Value Set
Source	This is the source of the value set, identifying the originator or publisher of the information	IHE Quality Research and Public Health Domain
Purpose	Brief description about the general purpose of the value set	To Reflect the left ear EHDI hearing screening result type using LOINC
Definition	A text definition describing how concepts in the value set were selected	<b>Extensional definition:</b> The value set was constructed by enumerating the codes from LOINC
Source URI	Most sources also have a URL or document URI that provides further details regarding the value set.	<a href="http://loinc.org">http://loinc.org</a>
Version	A string identifying the specific version of the value set.	Version 1.0
Status	Active (Current) or Inactive	Active
Effective Date	The date when the value set is expected to be effective	8/1/2010
Expiration Date	The date when the value set is no longer expected to be used	N/A
Creation Date	The date of creation of the value set	8/1/2010
Revision Date	The date of revision of the value set	N/A
Groups	The identifiers of the groups that include this value set. A group may also have an OID assigned.	IHE EHDI

### 6.5.I.2 JCIH-EHDI Hearing Screen Left Value Set

#### *Hearing Screen Left Value Set*

Sequence	LOINC Code	Description
1	53108-6	Newborn Hearing Screen Left

## 6.5.J JCIH-EHDI Hearing Loss Diagnosis ICD Codes

### 6.5.J.1 Metadata

770

Metadata Element	Description	Mandatory
Identifier	This is the unique identifier of the value set	1.3.6.1.4.1.19376.1.7.3.1.1.15.2.22
Name	This is the name of the value set	JCIH-EHDI Hearing Loss Diagnosis ICD Value Set
Source	This is the source of the value set, identifying the originator or publisher of the information	IHE Quality Research and Public Health Domain
Purpose	Brief description about the general purpose of the value set	To Reflect EHDI hearing loss diagnosis coded with ICD-10CM on the problem list
Definition	A text definition describing how concepts in the value set were selected	<b>Extensional definition:</b> The value set was constructed by enumerating the codes from ICD-10-CM
Source URI	Most sources also have a URL or document URI that provides further details regarding the value set.	<a href="http://www.who.int">http://www.who.int</a>
Version	A string identifying the specific version of the value set.	Version 1.0
Status	Active (Current) or Inactive	Active
Effective Date	The date when the value set is expected to be effective	8/1/2010
Expiration Date	The date when the value set is no longer expected to be used	N/A
Creation Date	The date of creation of the value set	8/1/2010
Revision Date	The date of revision of the value set	N/A
Groups	The identifiers of the groups that include this value set. A group may also have an OID assigned.	IHE EHDI

### 6.5.J.2 JCIH-EHDI Hearing Loss Diagnosis ICD Value Set

#### JCIH-EHDI Hearing Loss Diagnosis ICD Value Set

Sequence	ICD-9 CM Code	ICD Description	ICD-10 CM Code	EHDI Concept
1				Normal
2	389	Conductive Hearing Loss Unspec.	H90.2	Permanent Conductive

3	389.1	Sensorineural Hearing Loss Unspec.	H90.5	Sensorineural
4	389.2	Mixed: Cond. and SNHL	H90.8	Mixed
5				Auditory Neuropathy Spectrum Disorder
6				Transient Hearing Loss (?)

## 6.5.K JCIH-EHDI Newborn Hearing Loss Diagnosis Codes

### 6.5.K.1 Metadata

775

Metadata Element	Description	Mandatory
Identifier	This is the unique identifier of the value set	1.3.6.1.4.1.19376.1.7.3.1.1.15.2.14
Name	This is the name of the value set	JCIH-EHDI Newborn Hearing Loss Diagnosis Value Set
Source	This is the source of the value set, identifying the originator or publisher of the information	IHE Quality Research and Public Health Domain
Purpose	Brief description about the general purpose of the value set	To Reflect EHDI hearing loss diagnosis coded with SNOMED-CT on the problem list
Definition	A text definition describing how concepts in the value set were selected	<b>Extensional definition:</b> The value set was constructed by enumerating the codes from SNOMED-CT
Source URI	Most sources also have a URL or document URI that provides further details regarding the value set.	<a href="http://www.nlm.nih.gov/research/umls/Snomed/snomed_main.html">http://www.nlm.nih.gov/research/umls/Snomed/snomed_main.html</a>
Version	A string identifying the specific version of the value set.	Version 1.0
Status	Active (Current) or Inactive	Active
Effective Date	The date when the value set is expected to be effective	8/1/2010
Expiration Date	The date when the value set is no longer expected to be used	N/A
Creation Date	The date of creation of the value set	8/1/2010
Revision Date	The date of revision of the value set	N/A
Groups	The identifiers of the groups that include this value set. A group may also have an OID assigned.	IHE EHDI

### 6.5.K.2 JCIH-EHDI Newborn Hearing Loss Diagnosis Value Set

#### *Newborn Hearing Loss Diagnosis*

Sequence	SNOMED Code	Description	EHDI Concept
1	44057004	Conductive hearing loss (disorder)	Permanent Conductive
2	60700002	Sensorineural hearing loss (disorder)	Sensorineural
3	77507001	Mixed conductive AND sensorineural hearing loss (disorder)	Mixed
4	443805006	Auditory neuropathy spectrum disorder (disorder)	Auditory Neuropathy Spectrum Disorder
5	123123005	Transient (qualifier value)	Transient Hearing Loss
6	17621005	Normal (qualifier value)	Normal
7	255605001	Minimal (qualifier value)	Slight
8	18647004	Mild (Severity modifier) (qualifier value)	Mild
9	6736007	Moderate (severity modifier) (qualifier value)	Moderate
10	371924009	Moderate to severe(qualifier value)	Moderate to Severe
11	24484000	Severe (severity modifier) (qualifier value)	Severe
12	255611003	Profound (qualifier value)	Profound
13	419465000	Unilateral right (qualifier value)	Unilateral loss - right ear
14	419161000	Unilateral left (qualifier value)	Unilateral loss - left ear
15	95819006	Unilateral hearing loss (situation)	Unilateral loss - ear unspecified
16	95820000	Bilateral hearing loss (disorder)	Bilateral loss

### 780 6.5.L JCIH-EHDI Reason for no Hearing Loss Diagnosis Codes(SNOMED)

#### 6.5.L.1 Metadata

Metadata Element	Description	Mandatory
Identifier	This is the unique identifier of the value set	1.3.6.1.4.1.19376.1.7.3.1.1.15.2.15
Name	This is the name of the value set	JCIH-EHDI Reason for no Hearing Loss Diagnosis Value Set
Source	This is the source of the value set, identifying the originator or publisher of the information	IHE Quality Research and Public Health Domain
Purpose	Brief description about the general purpose of the value set	To Reflect Reason for no hearing loss diagnosis coded with SNOMED-CT.
Definition	A text definition describing how concepts in the value set were selected	<b>Extensional definition:</b> The value set was constructed by enumerating the codes from SNOMED-CT
Source URI	Most sources also have a URL or document URI that provides further details regarding the value set.	<a href="http://www.nlm.nih.gov/research/umls/Snomed/snomed_main.html">http://www.nlm.nih.gov/research/umls/Snomed/snomed_main.html</a>
Version	A string identifying the specific version of the value set.	Version 1.0
Status	Active (Current) or Inactive	Active
Effective Date	The date when the value set is expected to be effective	8/1/2010
Expiration Date	The date when the value set is no longer expected to be used	N/A
Creation Date	The date of creation of the value set	8/1/2010
Revision Date	The date of revision of the value set	N/A
Groups	The identifiers of the groups that include this value set. A group may also have an OID assigned.	IHE EHDI

### 6.5.L.2 JCIH-EHDI Reason for no Hearing Loss Diagnosis Value Set

#### *Reason for no Hearing Loss Diagnosis*

Sequence	SNOMED Code	Description	EHDI Concept
1	397709008	Patient died (finding)	No diagnosis: Infant died
2	360885002	Change of residence status (finding)	No diagnosis: Moved or gone elsewhere
3	184112005	Patient address unknown (finding)	No diagnosis: Unable to Contact Family
4	184118009	Patient telephone number unknown (finding)	No diagnosis: Unable to Contact Family
5	183638004	Follow-up refused	No diagnosis: Parents

IHE QRPH Technical Framework Supplement – Quality Measure Execution - Early Hearing (QME-EH)

			Declined Services - Follow-up refused
6	183946001	Procedure refused-uncooperative	No diagnosis: Parents Declined Services -Procedure refused - uncooperative
7	413319007	Persistent non-attender	No diagnosis: Unresponsive - Persistent non-attender
8	399307001	Loss to follow-up	No diagnosis: Unknown - Loss to follow-up
9	419984006	Inconclusive (qualifier value)	No diagnosis: Audiologic Diagnosis in Process
10	185332005	Appointment cancelled by patient (finding)	No diagnosis: Audiologic Diagnosis in Process - Rescheduled appointment
11	185333000	Appointment cancelled by doctor (finding)	No diagnosis: Audiologic Diagnosis in Process - Rescheduled appointment
12	281399006	Did not attend	No diagnosis: Audiologic Diagnosis in Process - Did not attend

785 **6.5.M JCIH-EHDI Newborn Hearing Loss Referrals Codes**

**6.5.M.1 Metadata**

Metadata Element	Description	Mandatory
Identifier	This is the unique identifier of the value set	1.3.6.1.4.1.19376.1.7.3.1.1.15.2.16
Name	This is the name of the value set	JCIH-EHDI Newborn Hearing Loss Referrals Value Set
Source	This is the source of the value set, identifying the originator or publisher of the information	IHE Quality Research and Public Health Domain
Purpose	Brief description about the general purpose of the value set	To Reflect EHDI referrals coded with SNOMED-CT and as a response to care plan recommendations (entered on a list of referrals in a medical summary)
Definition	A text definition describing how concepts in the value set were selected	<b>Extensional definition:</b> The value set was constructed by enumerating the codes from SNOMED-CT

Metadata Element	Description	Mandatory
Source URI	Most sources also have a URL or document URI that provides further details regarding the value set.	<a href="http://www.nlm.nih.gov/research/umls/Snomed/snomed_main.html">http://www.nlm.nih.gov/research/umls/Snomed/snomed_main.html</a>
Version	A string identifying the specific version of the value set.	Version 1.0
Status	Active (Current) or Inactive	Active
Effective Date	The date when the value set is expected to be effective	8/1/2010
Expiration Date	The date when the value set is no longer expected to be used	N/A
Creation Date	The date of creation of the value set	8/1/2010
Revision Date	The date of revision of the value set	N/A
Groups	The identifiers of the groups that include this value set. A group may also have an OID assigned.	IHE EHDI

### 6.5.M.2 JCIH-EHDI Newborn Hearing Loss Referrals Value Set

#### *EHDI Newborn Hearing Loss Referrals Value Set*

Sequence	SNOMED Code	Description	EHDI Concept
1	306210008	Referral to pediatric diagnostic audiology service (procedure)	Referral to audiologist
2	415271004	Referral to education service (procedure)	Referral to Early Intervention (Part C/non Part C)

790

### 6.5.N JCIH-EHDI Newborn Hearing Loss Reason for no Follow-up – Patient Reason Codes

#### 6.5.N.1 Metadata

Metadata Element	Description	Mandatory
Identifier	This is the unique identifier of the value set	1.3.6.1.4.1.19376.1.7.3.1.1.15.2.7
Name	This is the name of the value set	JCIH-EHDI Newborn Hearing Loss Reason for no Follow-up – Patient Reason Value Set

Metadata Element	Description	Mandatory
Source	This is the source of the value set, identifying the originator or publisher of the information	IHE Quality Research and Public Health Domain
Purpose	Brief description about the general purpose of the value set	To Reflect the reason that no follow-up is conducted in the case of hearing loss using SNOMED-CT reflected in negation of an intent to order the referral.
Definition	A text definition describing how concepts in the value set were selected	<b>Extensional definition:</b> The value set was constructed by enumerating the codes from SNOMED-CT
Source URI	Most sources also have a URL or document URI that provides further details regarding the value set.	<a href="http://www.nlm.nih.gov/research/umls/Snomed/snomed_main.html">http://www.nlm.nih.gov/research/umls/Snomed/snomed_main.html</a>
Version	A string identifying the specific version of the value set.	Version 1.0
Status	Active (Current) or Inactive	Active
Effective Date	The date when the value set is expected to be effective	8/1/2010
Expiration Date	The date when the value set is no longer expected to be used	N/A
Creation Date	The date of creation of the value set	8/1/2010
Revision Date	The date of revision of the value set	N/A
Groups	The identifiers of the groups that include this value set. A group may also have an OID assigned.	IHE EHDI

795 **6.5.N.2 JCIH-EHDI Newborn Hearing Loss Reason for no Follow-up – Patient Reason Value Set**

*EHDI Newborn Hearing Loss Reason for no Follow-up Value Set*

Sequence	SNOMED Code	Description	EHDI Concept
1	397709008	Patient died (finding)	Incomplete outpatient screen: Infant died
2	360885002	Change of residence status (finding)	Incomplete outpatient screen: Moved or gone elsewhere
3	184112005	Patient address unknown (finding)	Incomplete outpatient screen: Unable to contact family
4	184118009	Patient telephone number unknown (finding)	Incomplete outpatient screen: Unable to contact family

5	183638004	Follow-up refused	Incomplete outpatient screen: Follow-up refused
6	183946001	Procedure refused- uncooperative	Incomplete outpatient screen: Procedure refused- uncooperative
7	413319007	Persistent non-attender	Incomplete outpatient screen: Persistent non-attender
8	399307001	Loss to follow-up	Incomplete outpatient screen: Loss to follow-up
9	185332005	Appointment cancelled by patient (finding)	Incomplete outpatient screen: Rescheduled appointment
10	185333000	Appointment cancelled by doctor (finding)	Incomplete outpatient screen: Rescheduled appointment
11	281399006	Did not attend	Incomplete outpatient screen: Did not attend

## 800 6.5.O JCIH-EHDI Newborn Admission Type Codes

### 6.5.O.1 Metadata

Metadata Element	Description	Mandatory
Identifier	This is the unique identifier of the value set	1.3.6.1.4.1.19376.1.7.3.1.1.15.2.1
Name	This is the name of the value set	JCIH-EHDI Newborn Admission Type Value Set
Source	This is the source of the value set, identifying the originator or publisher of the information	IHE Quality Research and Public Health Domain
Purpose	Brief description about the general purpose of the value set	To Reflect EHDI newborn admission type used to select newborn hospital admissions for quality review for newborn screening using UB-04 FL-17 Codes
Definition	A text definition describing how concepts in the value set were selected	<b>Extensional definition:</b> The value set was constructed by enumerating the codes from UB-04 FL-17
Source URI	Most sources also have a URL or document URI that provides further details regarding the value set.	<a href="http://www.nubc.org">www.nubc.org</a>
Version	A string identifying the specific version of the value set.	Version 1.0

Metadata Element	Description	Mandatory
Status	Active (Current) or Inactive	Active
Effective Date	The date when the value set is expected to be effective	8/1/2010
Expiration Date	The date when the value set is no longer expected to be used	N/A
Creation Date	The date of creation of the value set	8/1/2010
Revision Date	The date of revision of the value set	N/A
Groups	The identifiers of the groups that include this value set. A group may also have an OID assigned.	IHE EHDI

### 6.5.O.2 JCIH-EHDI Newborn Admission Type Value Set

*Newborn Patient Encounter Value Set*

805 *NEWBORNADMISSIONOID*

#### US National Extension

Sequence	National Uniform Billing Committee FL-17 Code	Description	EHDI Concept
1	4	Newborn	

### 6.5.P Joint Commission Medical Reason Codes

#### 6.5.P.1 Metadata

810

Metadata Element	Description	Mandatory
Identifier	This is the unique identifier of the value set	1.3.6.1.4.1.33895.1.3.0.75
Name	This is the name of the value set	Joint Commission Medical Reason Value Set
Source	This is the source of the value set, identifying the originator or publisher of the information	IHE Quality Research and Public Health Domain
Purpose	Brief description about the general purpose of the value set	The Joint Commission value set is used to reflect medical reason why a test was not performed

Metadata Element	Description	Mandatory
Definition	A text definition describing how concepts in the value set were selected	<b>Extensional definition:</b> The value set was constructed by enumerating the codes from SNOMED-CT
Source URI	Most sources also have a URL or document URI that provides further details regarding the value set.	<a href="http://www.nlm.nih.gov/research/umls/Snomed/snomed_main.html">http://www.nlm.nih.gov/research/umls/Snomed/snomed_main.html</a>
Version	A string identifying the specific version of the value set.	Version 1.0
Status	Active (Current) or Inactive	Active
Effective Date	The date when the value set is expected to be effective	8/1/2010
Expiration Date	The date when the value set is no longer expected to be used	N/A
Creation Date	The date of creation of the value set	8/1/2010
Revision Date	The date of revision of the value set	N/A
Groups	The identifiers of the groups that include this value set. A group may also have an OID assigned.	IHE EHDI

### 6.5.P.2 Joint Commission Medical Reason Value Set

*EHDI specifies the re-use of the existing Medical Reason Value Set used by the Joint Commission measures.*

Sequence	SNOMED-CT Code	Description
1	397745006	Medical contraindication (finding)
2	397773008	Surgical contraindication (finding)

815

### 6.5.Q Joint Commission Discharge Disposition – Death Codes

#### 6.5.Q.1 Metadata

Metadata Element	Description	Mandatory
Identifier	This is the unique identifier of the value set	1.3.6.1.4.1.33895.1.3.0.12

Metadata Element	Description	Mandatory
Name	This is the name of the value set	Joint Commission Discharge Disposition – Death Value Set
Source	This is the source of the value set, identifying the originator or publisher of the information	IHE Quality Research and Public Health Domain
Purpose	Brief description about the general purpose of the value set	The Joint Commission value set is used to code discharge disposition that is an additional reason why a newborn hearing screening was not performed so that the admission would be excluded from quality measures
Definition	A text definition describing how concepts in the value set were selected	Extensional definition: The value set was constructed by enumerating the codes from SNOMED-CT
Source URI	Most sources also have a URL or document URI that provides further details regarding the value set.	<a href="http://www.nlm.nih.gov/research/umls/Snomed/snomed_main.html">http://www.nlm.nih.gov/research/umls/Snomed/snomed_main.html</a>
Version	A string identifying the specific version of the value set.	Version 1.0
Status	Active (Current) or Inactive	Active
Effective Date	The date when the value set is expected to be effective	8/1/2010
Expiration Date	The date when the value set is no longer expected to be used	N/A
Creation Date	The date of creation of the value set	8/1/2010
Revision Date	The date of revision of the value set	N/A
Groups	The identifiers of the groups that include this value set. A group may also have an OID assigned.	IHE EHDI

### 6.5.Q.2 Joint Commission Discharge Disposition – Death Value Set

820 *EHDI specifies the re-use of the existing Discharge Disposition of Death Value Set used by the Joint Commission measures.*

#### US National Extension

Sequence	National Uniform Billing Committee FL-17 Code	Description
1	20	Expired
2	40	Expired at home
3	41	Expired in a medical facility, such as a hospital, SNF, ICF or freestanding hospice

4	42	Expired – Place Unknown
---	----	-------------------------

825 **6.5.R Joint Commission Inpatient Encounter Codes**

**6.5.R.1 Metadata**

<b>Metadata Element</b>	<b>Description</b>	<b>Mandatory</b>
Identifier	This is the unique identifier of the value set	1.3.6.1.4.1.33895.1.3.0.12
Name	This is the name of the value set	Joint Commission Inpatient Encounter Value Set
Source	This is the source of the value set, identifying the originator or publisher of the information	IHE Quality Research and Public Health Domain
Purpose	Brief description about the general purpose of the value set	The Joint Commission value set is used to identify inpatient encounters for quality measures
Definition	A text definition describing how concepts in the value set were selected	<b>Extensional definition:</b> The value set was constructed by enumerating the codes from <a href="#">HL7 ActEncounter</a>
Source URI	Most sources also have a URL or document URI that provides further details regarding the value set.	<a href="http://www.hl7.org">http://www.hl7.org</a>
Version	A string identifying the specific version of the value set.	Version 1.0
Status	Active (Current) or Inactive	Active
Effective Date	The date when the value set is expected to be effective	8/1/2010
Expiration Date	The date when the value set is no longer expected to be used	N/A
Creation Date	The date of creation of the value set	8/1/2010
Revision Date	The date of revision of the value set	N/A
Groups	The identifiers of the groups that include this value set. A group may also have an OID assigned.	IHE EHDI

### 6.5.R.2 Joint Commission Inpatient Encounter Codes

830 *EHDI specifies the re-use of the existing Inpatient Encounter Value Set used by the Joint Commission measures.*

#### US National Extension

Sequence	HL7 ActEncounter Code	Description
1	IMP	inpatient encounter

### 6.5.S JCIH-EHDI Outpatient Encounter Codes

#### 835 6.5.S.1 Metadata

Metadata Element	Description	Mandatory
Identifier	This is the unique identifier of the value set	1.3.6.1.4.1.19376.1.7.3.1.1.15.2.2
Name	This is the name of the value set	JCIH-EHDI Outpatient Encounter Value Set
Source	This is the source of the value set, identifying the originator or publisher of the information	IHE Quality Research and Public Health Domain
Purpose	Brief description about the general purpose of the value set	Used to identify ambulatory encounters that have different quality measurement rules from inpatient
Definition	A text definition describing how concepts in the value set were selected	<b>Extensional definition:</b> The value set was constructed by enumerating the codes from SNOMED-CT
Source URI	Most sources also have a URL or document URI that provides further details regarding the value set.	<a href="http://www.nlm.nih.gov/research/umls/Snomed/snomed_main.html">http://www.nlm.nih.gov/research/umls/Snomed/snomed_main.html</a>
Version	A string identifying the specific version of the value set.	Version 1.0
Status	Active (Current) or Inactive	Active
Effective Date	The date when the value set is expected to be effective	8/1/2010
Expiration Date	The date when the value set is no longer expected to be used	N/A
Creation Date	The date of creation of the value set	8/1/2010
Revision Date	The date of revision of the value set	N/A

Metadata Element	Description	Mandatory
Groups	The identifiers of the groups that include this value set. A group may also have an OID assigned.	IHE EHDI

### 6.5.S.2 JCIH-EHDI Outpatient Encounter Value Set

Sequence	HL7 ActEncounter Code	Description
1	AMB	Ambulatory

### 6.5.T JCIH-EHDI Inpatient Screening Results not Performed Codes

#### 840 6.5.T.1 Metadata

Metadata Element	Description	Mandatory
Identifier	This is the unique identifier of the value set	1.3.6.1.4.1.19376.1.7.3.1.1.15.2.10
Name	This is the name of the value set	JCIH-EHDI Inpatient Screening Results not Performed Value Set
Source	This is the source of the value set, identifying the originator or publisher of the information	IHE Quality Research and Public Health Domain
Purpose	Brief description about the general purpose of the value set	To Reflect the right ear EHDI results reported using LOINC answer lists
Definition	A text definition describing how concepts in the value set were selected	<b>Extensional definition:</b> The value set was constructed by enumerating the codes from LOINC
Source URI	Most sources also have a URL or document URI that provides further details regarding the value set.	<a href="http://loinc.org">http://loinc.org</a>
Version	A string identifying the specific version of the value set.	Version 1.0
Status	Active (Current) or Inactive	Active
Effective Date	The date when the value set is expected to be effective	8/1/2010
Expiration Date	The date when the value set is no longer expected to be used	N/A
Creation Date	The date of creation of the value set	8/1/2010
Revision Date	The date of revision of the value set	N/A

Metadata Element	Description	Mandatory
Groups	The identifiers of the groups that include this value set. A group may also have an OID assigned.	IHE EHDI

### 6.5.T.2 JCIH-EHDI Inpatient Screening Results not Performed Value Set

Sequence	LOINC Code	Answer Code	Description	Global ID	Global ID Code System
1	LA12408-3		Attempted, but unsuccessful - technical fail	103709008	SN
2	LA7304-4		Not performed	262008008	SN
3	LA12409-1		Not performed, medical exclusion - not indicated	410534003	SN

## 845 6.5.U JCIH-EHDI Evidence of Hearing Screening Performed Codes

### 6.5.U.1 Metadata

Metadata Element	Description	Mandatory
Identifier	This is the unique identifier of the value set	1.3.6.1.4.1.19376.1.7.3.1.1.15.2.18
Name	This is the name of the value set	JCIH-EHDI Evidence of Hearing Screening Performed Value Set
Source	This is the source of the value set, identifying the originator or publisher of the information	IHE Quality Research and Public Health Domain
Purpose	Brief description about the general purpose of the value set	To Reflect Evidence of Hearing Screening Performed through the result values of pass-Left, pass-Right, or Refer. This excludes unsuccessful results.
Definition	A text definition describing how concepts in the value set were selected	<b>Extensional definition:</b> The value set was constructed by enumerating the codes from LOINC
Source URI	Most sources also have a URL or document URI that provides further details regarding the value set.	<a href="http://loinc.org">http://loinc.org</a>

Metadata Element	Description	Mandatory
Version	A string identifying the specific version of the value set.	Version 1.0
Status	Active (Current) or Inactive	Active
Effective Date	The date when the value set is expected to be effective	8/1/2010
Expiration Date	The date when the value set is no longer expected to be used	N/A
Creation Date	The date of creation of the value set	8/1/2010
Revision Date	The date of revision of the value set	N/A
Groups	The identifiers of the groups that include this value set. A group may also have an OID assigned.	IHE EHDI

### 6.5.U.2 JCIH-EHDI Evidence of Hearing Screening Performed Value Set

#### *Evidence of Hearing Screening Performed Value Set*

Sequence	LOINC Code	Answer Code	Description	Global ID	Global ID Code System
1	LA10392-1	164059009	Pass		
2	LA10393-9	183924009	Refer		

850

### 6.5.V JCIH-EHDI Procedure Declined Value Set Codes

#### 6.5.V.1 Metadata

Metadata Element	Description	Mandatory
Identifier	This is the unique identifier of the value set	1.3.6.1.4.1.19376.1.7.3.1.1.15.2.20
Name	This is the name of the value set	JCIH-EHDI Procedure Declined Value Set
Source	This is the source of the value set, identifying the originator or publisher of the information	IHE Quality Research and Public Health Domain
Purpose	Brief description about the general purpose of the value set	To Reflect that the hearing screening procedure was not performed due to the patient/parent declining the procedure

Metadata Element	Description	Mandatory
Definition	A text definition describing how concepts in the value set were selected	<b>Extensional definition:</b> The value set was constructed by enumerating the codes from SNOMED-CT
Source URI	Most sources also have a URL or document URI that provides further details regarding the value set.	<a href="http://www.nlm.nih.gov/research/umls/Snomed/snomed_main.html">http://www.nlm.nih.gov/research/umls/Snomed/snomed_main.html</a>
Version	A string identifying the specific version of the value set.	Version 1.0
Status	Active (Current) or Inactive	Active
Effective Date	The date when the value set is expected to be effective	8/1/2010
Expiration Date	The date when the value set is no longer expected to be used	N/A
Creation Date	The date of creation of the value set	8/1/2010
Revision Date	The date of revision of the value set	N/A
Groups	The identifiers of the groups that include this value set. A group may also have an OID assigned.	IHE EHDI

### 6.5.V.2 JCIH-EHDI JCIH-EHDI Procedure Declined Value Set Value Set

855 *JCIH-EHDI Procedure Declined Value Set:*

Sequence	SNOMED-CT Code	Description
1	183949008	Assessment examination refused (situation)
2	183945002	Procedure refused - religion (situation)
3	183948000	Refused procedure - parent's wish (situation)
4	397709008	Patient died (finding)