



Integrating the Healthcare Enterprise International

Free Educational Webinar Series 2011

Learn More: www.ihe.net/events/webinars2011.cfm





Linda Wedemeyer MD

Jim Riggi

*IHE Eye Care Planning
Committee Co-Chairs*



IHE Eye Care Agenda

- Domain & Committee Overview
- Domain Profiles & Technical Frameworks
 - Overview Profiles developed
 - New Profiles developed in 2010-2011 year
- How to Participate?
 - IHE International Membership
 - Planning & Technical Committees
- Q&A Session

IHE Eye Care Overview

- Overview

- Scope:

- Workflow
 - Information sharing
 - Patient care

- Sponsor:

- American Academy of Ophthalmology

- Countries involved in committees

- US, Germany, Japan

IHE Eye Care Overview

– History

- Initiated in 2005
- Started with Eye Care Scheduled Workflow
- Currently 6 profiles in FT or TI

– Road Map

- 2009-2010
 - Expand participation of vendors
 - Added Acquisition Modality Importer
- 2011
 - Added Basic Eye Care Workflow
 - Started Routine Eye Care Exam Template

Profiles & Technical Frameworks

Overview

- IHE Technical Frameworks

http://www.ihe.net/Technical_Framework/index.cfm#eye

- IHE Profiles developed by Eye Care

– http://wiki.ihe.net/index.php?title=Profiles#IHE_Eyecare_Profiles

- Learn More

- 2010 Webinar Series- <http://www.ihe.net/Events/webinars2010.cfm>

- 2009 Webinar Series- <http://www.ihe.net/Events/webinars2009.cfm>

- 2008 Webinar Series- <http://www.ihe.net/Events/webinars2008.cfm>

Profiles & Technical Frameworks

Existing Profiles with High Uptake

- Advanced Eye Care Workflow
 - Use Cases
 - Patient Registered at ADT and Procedure Ordered at the Order Placer
 - Patient Registered at ADT and Procedure Ordered at DSS/OF
 - Unidentified Patient Registered at ADT but Completed at Modality Prior to Order
 - Unidentified Patient Assigned Temporary Departmental ID and Scheduled at DSS/Order Filler
 - Image Acquisition Completed Without Scheduling at Department System Scheduler/Order Filler
 - Patient Information Reconciliation During Image Acquisition
 - Cancel Procedure
 - Instructions for Procedures – Optional Workflow

Profiles & Technical Frameworks

Existing Profiles with High Uptake

- Advanced Eye Care Workflow
 - Systems it would impact
 - ADT/Patient registration
 - Department system scheduler/order filler
 - Order placer
 - Acquisition modality/acquisition modality importer
 - Performed procedure step manager
 - Image display/manager/archive
 - Benefits
 - Specifies scheduling and coordination of procedure data and its reliable storage in an image management system from where it is available for workflow steps
 - Provides ability for acquisition devices to identify the actual procedure(s) that were performed, enabling workflow steps such as automated billing
 - Status: Final Text

Actors	Transactions	Optionality	Section
ADT Patient Registration	Patient Registration [RAD-1]	R	RAD TF- 2: 4.1
	Patient Update [RAD-12]	R	RAD TF- 2: 4.12
Order Placer	Patient Registration [RAD-1]	R	RAD TF- 2: 4.1
	Patient Update [RAD-12]	R	RAD TF- 2: 4.12
	Placer Order Management [RAD-2]	R	RAD TF- 2: 4.2
	Filler Order Management [RAD-3]	R	RAD TF- 2: 4.3
Department System Scheduler/ Order Filler	Patient Registration [RAD-1]	R	RAD TF- 2: 4.1
	Patient Update [RAD-12]	R	RAD TF- 2: 4.12
	Placer Order Management [RAD-2]	R	RAD TF- 2: 4.2
	Filler Order Management [RAD-3]	R	RAD TF- 2: 4.3
	Procedure Scheduled [RAD-4]	R	RAD TF- 2: 4.4
	Query Modality Worklist [EYECARE-1]	R	EYECARE TF- 2: 4.1
	Modality Procedure Step In Progress [RAD-6]	R	RAD TF- 2: 4.6
	Modality Procedure Step Completed [EYECARE-6]	R	EYECARE TF- 2: 4.6
	Procedure Updated [RAD-13]	R	RAD TF- 2: 4.13

Acquisition Modality	Query Modality Worklist [EYECARE-1]	R	EYECARE TF- 2: 4.1
	Modality Procedure Step In Progress [RAD-6]	R	RAD TF- 2: 4.6
	Modality Procedure Step Completed [EYECARE-6]	R	EYECARE TF- 2: 4.6
	Modality Images/Evidence Stored [EYECARE-2]	R	EYECARE TF- 2: 4.2
	Storage Commitment [CARD-3]	R	CARD TF- 2: 4.3
Acquisition Modality Importer	Query Modality Worklist [EYECARE-1]	R	EYECARE TF- 2: 4.1
	Modality Procedure Step In Progress [RAD-6]	R	RAD TF- 2: 4.6
	Modality Procedure Step Completed [EYECARE-6]	R	EYECARE TF- 2: 4.6
	Modality Images/Evidence Stored [EYECARE-2]	R	EYECARE TF- 2: 4.2
	Storage Commitment [CARD-3]	R	CARD TF- 2: 4.3

Evidence Creator	Modality Images/Evidence Stored [EYECARE-2]	R	EYECARE TF- 2: 4.2
	Storage Commitment [CARD-3]	R	CARD TF- 2: 4.3
Image Manager/ Image Archive	Procedure Scheduled [RAD-4]	R	RAD TF- 2: 4.4
	Modality Procedure Step In Progress [RAD-6]	R	RAD TF- 2: 4.6
	Modality Procedure Step Completed [EYECARE-6]	R	EYECARE TF- 2: 4.6
	Modality Images/Evidence Stored [EYECARE-2]	R	EYECARE TF- 2: 4.2
	Storage Commitment [CARD-3]	R	CARD TF- 2: 4.3
	Patient Update [RAD-12]	R	RAD TF- 2: 4.12
	Images Availability Query [RAD-11]	R	RAD TF- 2: 4.11
	Procedure Updated [RAD-13]	R	RAD TF- 2: 4.13
	Query Images [EYECARE-5]	R	EYECARE TF- 2: 4.5
	Retrieve Images [EYECARE-3]	R	EYECARE TF- 2: 4.3
Performed Procedure Step Manager	Modality Procedure Step In Progress [RAD-6]	R	RAD TF- 2: 4.6
	Modality Procedure Step Completed [EYECARE-6]	R	RAD TF- 2: 4.7
Image Display	Query Images [EYECARE-5]	R	EYECARE TF- 2: 4.5
	Retrieve Images [EYECARE-3]	R	EYECARE TF- 2: 4.3

Profiles & Technical Frameworks

Existing Profiles with High Uptake

- Eye Care Charge Posting
 - Use Cases
 - New patient appointment
 - Existing patient
 - Systems it would impact
 - ADT/Patient registration
 - Department system scheduler/order filler
 - Acquisition modality/acquisition modality importer
 - Performed procedure step manager
 - Charge processor
 - Benefits
 - Standardizes the Charge Posted Transaction to a billing system, thus reducing system interface installation time
 - Reduces the need of billing system to have knowledge of the eye care internals
 - Result is billing system will receive more complete, timely and accurate data
 - Status: Final Text

Actors	Transactions	Optionality	Section
ADT Patient Registration	Account Management [RAD-36]	R	RAD TF- 3: 4.36
Department System Scheduler/ Department System Scheduler/Order Filler/Performed Procedure Step Manager	Charge Posted [RAD-35]	R	RAD TF- 3: 4.35
	Modality Procedure Step In Progress [RAD-6]	R	RAD TF- 2: 4.6
	Modality Procedure Step Completed [EYECARE-6]	R	EYECARE TF- 2: 4.6
Acquisition Modality	Modality Procedure Step In Progress [RAD-6]	R	RAD TF- 2: 4.6
	Modality Procedure Step Completed [EYECARE-6]	R	EYECARE TF- 2: 4.6
Acquisition Modality Importer	Modality Procedure Step In Progress [RAD-6]	R	RAD TF- 2: 4.6
	Modality Procedure Step Completed [EYECARE-6]	R	EYECARE TF- 2: 4.6
Charge Processor	Charge Posted [RAD-35]	R	RAD TF- 3: 4.35
	Account Management [RAD-36]	R	RAD TF- 3: 4.36

Profiles & Technical Frameworks

Existing Profiles with High Uptake

- Eye Care Evidence Documents
 - Use Cases
 - Eye Care Evidence Documents Being Created by Acquisition Modality
 - Eye Care Evidence Documents Being Created by Workstations
 - Systems it would impact
 - Evidence creator
 - Acquisition modality
 - Image manager/archive
 - Image display
 - Benefits
 - Allows detailed information, such as reconstructed or derived images, measurements, post processing results, etc. to be made available as input to the process of generating a clinical report
 - Status: Final Text

Actors	Transactions	Optionality	Section
Evidence Creator	Storage Commitment [CARD-3]	R	CARD TF-2: 4.3
	Modality Images/Evidence Stored [EYECARE-2]	R	EYECARE TF- 2: 4.2
Acquisition Modality	Storage Commitment [CARD-3]	R	CARD TF-2: 4.3
	Modality Images/Evidence Stored [EYECARE-2]	R	EYECARE TF- 2: 4.2
Image Manager/ Image Archive	Storage Commitment [CARD-3]	R	CARD TF-2: 4.3
	Modality Images/Evidence Stored [EYECARE-2]	R	EYECARE TF- 2: 4.2
	Query Evidence Documents [EYECARE-4]	R	EYECARE TF- 2: 4.4
	Retrieve Evidence Documents [RAD-45]	R	RAD TF- 3: 4.45
Image Display	Query Evidence Documents [EYECARE-4]	R	EYECARE TF- 2: 4.4
	Retrieve Evidence Documents [RAD-45]	R	RAD TF- 3: 4.45

Profiles & Technical Frameworks

Existing Profiles with High Uptake

- Eye Care Displayable Reports
 - Use Cases
 - Typical displayable report example
 - Systems it would impact
 - Report Creator
 - Report Reader
 - Report Repository
 - Benefits
 - Allows use of a DICOM Encapsulated Document, which has emerged as a ubiquitous means of encoding documents, including graphical content
 - Allows reporting healthcare provider to control the “look” of the report
 - Status: Final Text

Actors	Transactions	Optionality	Vol II / III Section
Report Creator	Displayable Report Storage [EYECARE-7]	R	EYECARE TF- 2: 4.7
	Storage Commitment [CARD-3]	R	CARD TF- 2: 4.3
Report Reader	Query Displayable Reports [EYECARE-8]	R	EYECARE TF- 2: 4.8
	Retrieve Displayable Reports [EYECARE-9]	R	EYECARE TF- 2: 4.9
Report Repository	Displayable Report Storage [EYECARE-7]	R	EYECARE TF- 2: 4.7
	Query Displayable Reports [EYECARE-8]	R	EYECARE TF- 2: 4.8
	Retrieve Displayable Reports [EYECARE-9]	R	EYECARE TF- 2: 4.9
	Storage Commitment [CARD-3]	R	CARD TF- 2: 4.3

Profiles & Technical Frameworks

New Profiles in Development

- Basic Eye Care Workflow
 - Use Cases
 - Patient registered at ADT, manual procedure order
 - Patient registered at ADT, automatic procedure order
 - Systems it would impact:
 - ADT/Patient registration
 - Department system scheduler/order filler
 - Order placer
 - Acquisition modality/acquisition modality importer
 - Patient demographics supplier/consumer
 - Image display/manager/archive
 - Benefits:
 - Establishes continuity and integrity of patient and procedure data
 - Specifies scheduling and coordination of procedure data to devices
 - Status: Trial Implementation

Patient Demographics Supplier	Patient Identity Management [ITI-30]	R	ITI TF-2b:3.30
Patient Demographics Consumer	Patient Identity Management [ITI-30]	R	ITI TF-2b:3.30
Order Placer	Placer Order Management [RAD-2]	R	RAD TF- 2: 4.2
	Filler Order Management [RAD-3]	R	RAD TF- 2: 4.3
Department System Scheduler/ Order Filler	Patient Update [RAD-12]	R	RAD TF- 2: 4.12
	Placer Order Management [RAD-2]	R	RAD TF- 2: 4.2
	Filler Order Management [RAD-3]	R	RAD TF- 2: 4.3
	Procedure Scheduled [RAD-4]	R	RAD TF- 2: 4.4
	Query Modality Worklist [EYECARE-1]	R	EYECARE TF- 2: 4.1
Acquisition Modality	Query Modality Worklist [EYECARE-1]	R	EYECARE TF- 2: 4.1
	Modality Images/Evidence Stored [EYECARE-2]	R	EYECARE TF- 2: 4.2

Acquisition Modality Importer	Query Modality Worklist [EYECARE-1]	R	EYECARE TF- 2: 4.1
	Modality Images/Evidence Stored [EYECARE-2]	R	EYECARE TF- 2: 4.2
Evidence Creator	Modality Images/Evidence Stored [EYECARE-2]	R	EYECARE TF- 2: 4.2
Image Manager/ Image Archive	Procedure Scheduled [RAD-4]	R	RAD TF- 2: 4.4
	Modality Images/Evidence Stored [EYECARE-2]	R	EYECARE TF- 2: 4.2
	Patient Update [RAD-12]	R	RAD TF- 2: 4.12
	Query Images [EYECARE-5]	R	EYECARE TF- 2: 4.5
	Retrieve Images [EYECARE-3]	R	EYECARE TF- 2: 4.3
Image Display	Query Images [EYECARE-5]	R	EYECARE TF- 2: 4.5
	Retrieve Images [EYECARE-3]	R	EYECARE TF- 2: 4.3

Profiles & Technical Frameworks

New Profiles in Development

- Appointment Scheduling
 - Use Cases
 - Patient registered at ADT
 - Request new appointment
 - Request schedule
 - Systems it would impact:
 - Patient registration
 - Appointment scheduling
 - Benefits:
 - Standardizing the means of requesting patient appointments
 - Minimizing the time needed for these requests
 - Status: Trial Implementation

Actors	Transactions	Optionality	Section
ADT Patient Registration	Patient Registration	R	RAD TF- 2:4.1
	Patient Update	R	RAD TF- 2:4.12
Appointment Requester	Patient Registration	R	RAD TF- 2:4.1
	Patient Update	R	RAD TF- 2:4.12
	Appointment Request	R	EYECARE TF- 2:4.12
	Schedule Query	R	EYECARE TF- 2:4.14
	Appointment Notification	R	EYECARE TF- 2:4.13
Appointment Scheduler	Patient Registration	R	RAD TF- 2:4.1
	Patient Update	R	RAD TF- 2:4.12
	Appointment Request	R	EYECARE TF- 2 :4.12
	Schedule Query	R	EYECARE TF- 2 :4.14
	Appointment Notification	R	EYECARE TF- 2 :4.13

How to Participate in Eye Care?

IHE International Membership is Free.

- Apply for IHE International Organizational Membership
 - Visit: www.ihe.net/apply
 - Approved monthly by IHE International Board
 - [Review IHE's 400+ Organizational Members](#)
- Participate in IHE Domains & Committees
 - *IHE Organizational Members only*
 - *12 Clinical and Operational Domains*
 - Each Domain has one planning and one technical committee
- Non-members participate in comment periods and implement IHE Technical Frameworks

Eye Care Committee Responsibilities

Planning Committee

- Plan for Connectathon and Showcase
- Education
- Identifies committee priorities and problems
- Major projects:
 - Recruitment for 2011 Connectathon & showcase
 - Marketing and Showcase Scenarios

Contact Information

- Secretary: Flora Lum (flum@aao.org)
- Co-Chair Jim Riggi
- Co-Chair: Linda Wedemeyer
- eyecare@ihe.net
- Committee's page on ihe.net
- Committee's wiki home page



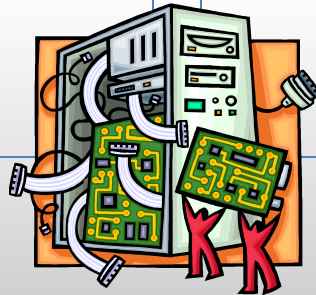
Eye Care Committee Responsibilities

Technical Committee

- Recruitment
- Development of IHE Profiles
- Maintenance of IHE Technical Frameworks
- Major Projects:
 - Routine eye exam template

Contact Information

- Flora Lum, MD flum@aao.org
- Rick Butler
- Imran Chaudhri
- eyecare@ihe.net
- Committee's page on ihe.net
- Committee's wiki home page



How to Participate in Eye Care?

Participate IHE's Profile Cycle

- Committee work follows the IHE Profile Cycle
 - Annual eighteen (18) month cycle
 - Each IHE domain has its own independent schedule
 - Opportunities for IHE members and non-members to participate in cycle
- Detailed overview of IHE Cycle next

IHE Profiles Drafted & Revised



Published For Public Comment

Trial Implementation Posted



Test at IHE Connectathons



Publish in IHE's Product Registry

14-18 mos.

IHE Technical Framework Developed

6-13 mos.



Demonstrate at a



Profile Selection by Committees

IHE Call for Proposals Opens

1-5 mos.

IHE Improves, Safety, Quality and Efficiency in Clinical Settings.

Install Interoperable products in Clinical Settings worldwide



IHE Profile Cycle Stages 2010-2011	Membership Status	Open Date	Close Date	Learn More
<i>Call for Proposal</i>	Open	October 2010	December 2010	http://wiki.ihe.net/index.php?title=Brief_Proposal_Template
<i>Profile Selection</i>	Closed	November 2010	December 2010	http://wiki.ihe.net.index.php?title=Eye_Care_Planning_Committee
<i>IHE Profiles drafted in IHE Committees</i>	Open	January 2011	May 2011	http://wiki.ihe.net.index.php?title=Eye_Care_Technical_Committee
<i>Public Comment 1</i>	Open	Feb 2011	Mar 2011	http://www.ihe.net/Technical_Framework/index.cfm#eye
<i>Trial Implementation Published</i>	Closed	Mar 2011	May 2011	http://www.ihe.net/Technical_Framework/index.cfm#eye
<i>IHE Connectathon Registration</i>	Open	August 1 2011	August 17 2011	www.iheeyecare.org
<i>IHE Connectathon Dates</i>	Open	October 2011	October 2011	www.iheeyecare.org

Dates are subject to change please check
http://wiki.ihe.net/index.php?title=Eye_Care

IHE Profile Cycle Stages 2011-2012	Membership Status	Open Date	Close Date	Learn More
<i>Call for Proposal</i>	Open	October 2011	December 2011	http://wiki.ihe.net/index.php?title=Brief_Proposal_Template
<i>Profile Selection</i>	Closed	November 2011	December 2011	http://wiki.ihe.net.index.php?title=Eye_Care_Planning_Committee
<i>IHE Profiles drafted in IHE Committees</i>	Open	January 2012	May 2012	http://wiki.ihe.net.index.php?title=Eye_Care_Technical_Committee
<i>Public Comment 1</i>	Open	Feb 2012	Mar 2011	http://www.ihe.net/Technical_Framework/index.cfm#eye
<i>Trial Implementation Published</i>	Closed	Mar 2012	May 2012	http://www.ihe.net/Technical_Framework/index.cfm#eye
<i>IHE Connectathon Registration</i>	Open	August 2012	August 2012	www.iheeyecare.org
<i>IHE Connectathon Dates</i>	Open	October 2012	October 2012	www.iheeyecare.org

Dates are subject to change please check
http://wiki.ihe.net/index.php?title=Eye_Care



Thank you for your attention
Questions?



Learn More about IHE International

Important Links and Information

- IHE Webinar Series runs June-September 2011
 - Visit www.ihe.net for the full list of webinars
 - Registration is free!
- All webinar recordings and slide decks will be posted online at: www.ihe.net/Events/webinars2011.cfm
- Sign up for the IHE International News
 - Email secretary@ihe.net
 - Sign up for the [IHE Webinar Series listserv](#)
- Apply for IHE International's Free Membership
 - Visit: www.ihe.net/apply

Learn More about IHE Connectathons

- IHE Connectathons: www.iheusa.org/connectathon.aspx
- IHE N.A. Connectathon is January 9-14, 2011
 - Testing dates extended this year. Read more: http://www.iheusa.org/connectathon_participant.aspx#testingextended
- IHE N.A. Connectathon Registration Opens: August 22-September 30, 2011
 - View the Participate Guidelines online: <http://www.iheusa.org/connectathon.aspx>
- Attend information webinars on the Connectathon during the IHE Webinar Series. View the full agenda online at www.ihe.net