

# Retrieve Form for Data Capture (RFD)

**IHE Vendor's Workshop 2008**

**IHE Quality, Research, and Public Health (QRPH)**

**Jason Colquitt**

**Greenway Medical Technologies**



# RFD Profile

## What does RFD do/provide?

Provides a method for gathering data within a user's current application to meet the requirements of an external system

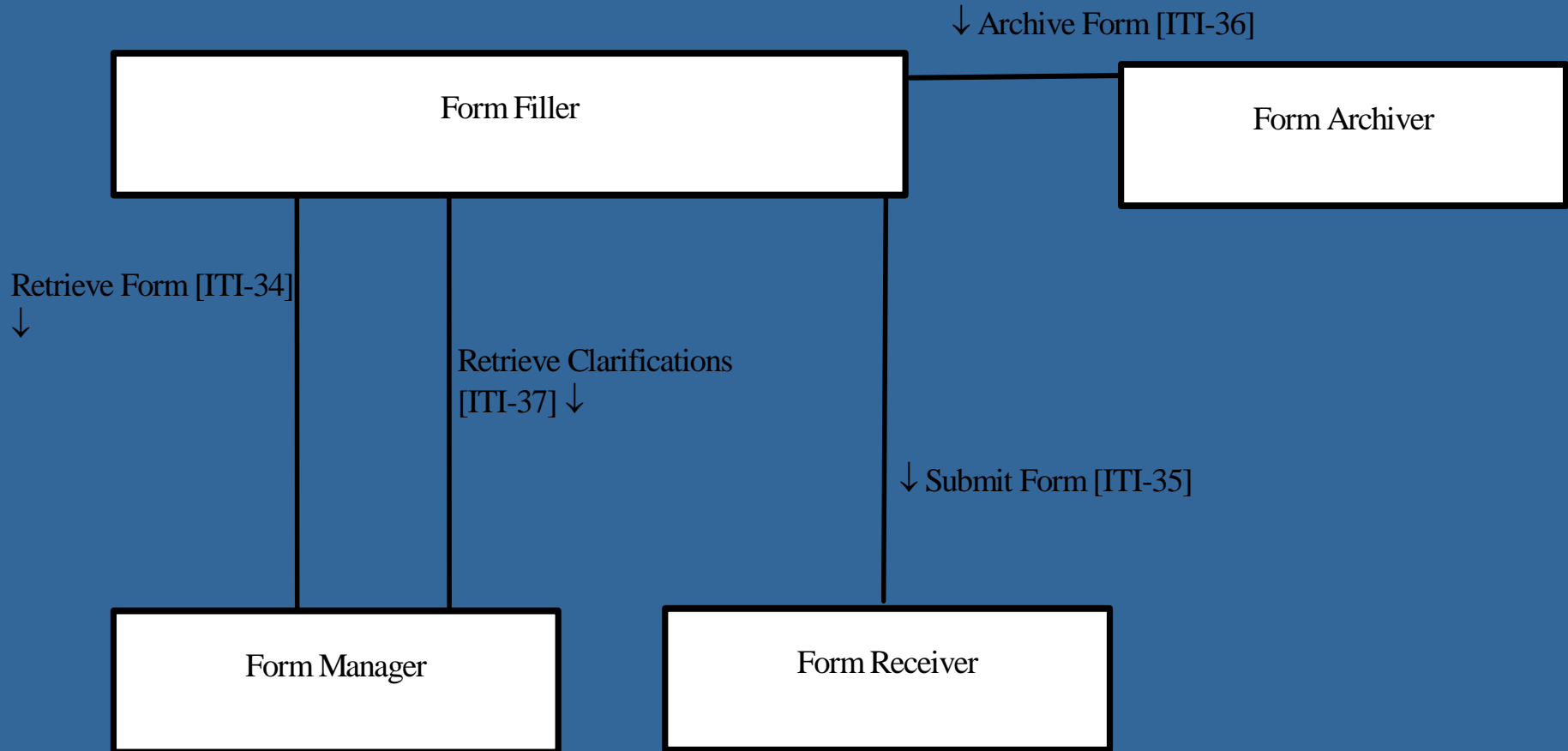
## Details:

- A standard way of displaying external data capture forms inside an EHR.
- Many-to-many integration – any EHR can retrieve forms from many external systems.
- Low barrier of entry for EHR and external systems.
- Flexible profile to accommodate both low-tech and sophisticated implementations.

# RFD Use Cases

- **Investigational New Drug Trials**
  - EHR linked to pharma sponsor via EDC.
    - Clinical Research Data Capture Profile (CRD)
- **Bio-surveillance**
  - EHR linked to local and national bio-surveillance systems.
- **Pharmaco-vigilance**
  - EHR linked to FDA and sponsors.
    - Drug Safety Content White Paper (DSC)
- **Submission to National, State and Regional Data Registries**
  - EHR linked to National Cardiovascular Data Registry, US national registry.
- **Clinical Impact Registry**
  - EHR linked to National Oncologic PET Registry (NOPR)

# Actors and Transactions



# RFD Actors

- **Form Filler:** An actor for retrieving Forms
- **Form Manager:** An actor for supplying Forms
- **Form Receiver:** An actor for receiving submitted instance data
- **Form Archiver:** An actor for receiving submitted instance data for archival.

# RFD Transactions

- **Retrieve Form**
  - Supply a FormID to Form Manager to retrieve a Form
  - *Optional* Supply prepopData – used to determine the Form, and/or may be used to pre-populate the Form
  - *Optional* Supply ArchiveURL – used to determine the Form Archiver to be used
- **Submit Form**
  - Form Submit action, Posting Instance Data to a Form Receiver
- **Archive Form**
  - Think of this as a Carbon Copy feature
  - Optional XForm Submit action for Form Fillers to use
- **Retrieve Clarifications**
  - Retrieve a list of Organizational Data Clarifications

# RFD Transactions

- **HTTP-GET/HTTP-POST**
- **SOAP Transport**
  - **RFD.xsd** (shared XML Schema used by the other three WSDL files)
  - **RFDFormManager.wsdl**
    - RequestForm and RequestClarifications Transactions
  - **RFDFormReceiver.wsdl**
    - SubmitForm Transaction
  - **RFDFormArchiver.wsdl**
    - ArchiveForm Transaction

# RFD World

**Drug Safety  
Data Collection Agency**  
(Form Manager / Form Receiver)



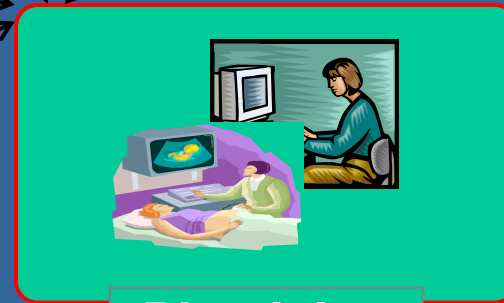
**Federal or State Agency**  
(Form Manager / Form Receiver)



**Clinical Trials Sponsor**  
(Form Manager / Form Receiver/ Form Archiver)



**Disease Registry**  
(Form Manager / Form Receiver)



**Physician  
Office**  
(Form Filler)

# RFD Profile Phases

- **Integration Profile Phase**
  - Define standard format for forms
  - Define standard method for retrieving and submitting forms
  
- **Content Profile Phase**
  - Provide domain-specific form requirements
  - Enable form population from EHR mapped data

# Call to Action

- **Read the Profile; Provide Comments**
- **Participate in Testing**
- **Join**



**iHE**<sup>®</sup> *changing the way healthcare*  
[www.ihe.net](http://www.ihe.net) *connects*

**WWW.IHE.NET**