



# *Integrating the Healthcare Enterprise International*

*Free Educational Webinar Series 2011*

Learn More: [www.ihe.net/events/webinars2011.cfm](http://www.ihe.net/events/webinars2011.cfm)





# IT Infrastructure Agenda

- Domain & Committee Overview
- Domain Profiles & Technical Frameworks
  - Schedule Change for Webinars
    - Educational Discussion of new profiles 30 August 2011 at 10:30-12:00 noon CT.
  - Overview Profiles developed
  - New Profiles developed in 2011-2012 year
- How to Participate?
  - IHE International Membership
  - Planning & Technical Committees
- Q&A Session

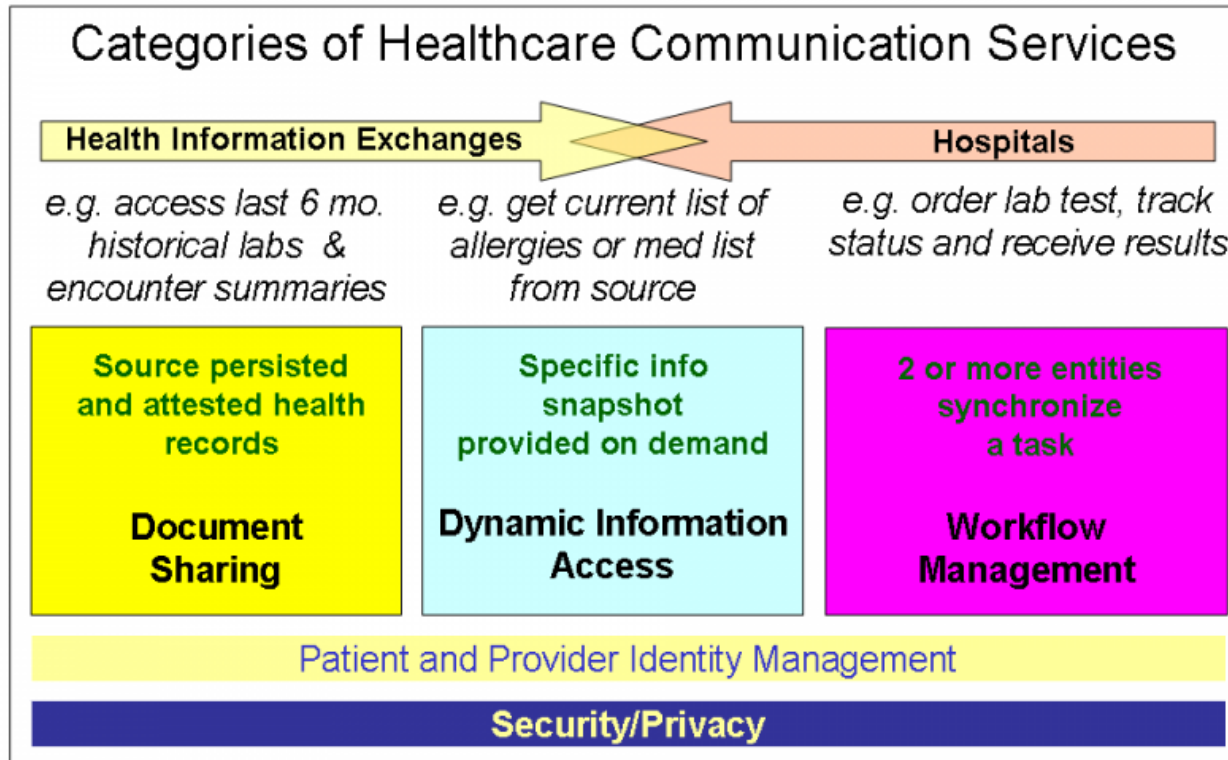
# IT Infrastructure Part 2

- IT Infrastructure second webinar will:
  - August 30, 2012 at 10:30-12:00 noon CT.
  - [Click here to register](#)
- Visit: [www.ihe.net/Events/webinars2011.cfm](http://www.ihe.net/Events/webinars2011.cfm) for register for the event in advance.

# IT Infrastructure Overview

- IT Infrastructure concentrates on:
  - Security (e.g., ATNA)
  - Provider and Patient Identity Services (e.g., HPD)
  - Document Sharing (e.g., XDS, XDR, XDM)
  - Dynamic Information Access
  - Workflow Management
- Sponsors:
  - Health Information Management Systems Society (HIMSS)  
[www.himss.org](http://www.himss.org)
  - ASIP Santé- <http://esante.gouv.fr>
- Participation includes:
  - Austria, Belgium, Canada, France, Germany, Italy, Netherlands, United States

# Primary Concerns for IT Infrastructure





# Profiles & Technical Frameworks

## *Overview*

- IHE Technical Frameworks can be found at
  - [www.ihe.net/Technical\\_Framework/index.cfm#IT](http://www.ihe.net/Technical_Framework/index.cfm#IT)
- IHE Profiles developed by IT Infrastructure
  - [wiki.ihe.net/index.php?title=ITI Technical Committee](http://wiki.ihe.net/index.php?title=ITI_Technical_Committee)
- North American Connectathon Dates
  - [www.iheusa.org/connectathon\\_participant.aspx#importantdates](http://www.iheusa.org/connectathon_participant.aspx#importantdates)
- Learn More
  - 2010 Webinar Series- <http://www.ihe.net/Events/webinars2010.cfm>
  - 2009 Webinar Series- <http://www.ihe.net/Events/webinars2009.cfm>
  - 2008 Webinar Series- <http://www.ihe.net/Events/webinars2008.cfm>
- Profile Summaries, existing profiles:  
[http://wiki.ihe.net/index.php?title=Profiles#IHE IT Infrastructure Profiles](http://wiki.ihe.net/index.php?title=Profiles#IHE_IT_Infrastructure_Profiles)

# New Profiles for 2011

- **XAD-PID Change Management (XPID)**— XPID is a new profile that specifies how the association between a local patient identifier (PID) and an affinity domain patient identifier (XAD-PID) is managed. Previously, this was accomplished in a variety of ways that were not always interoperable. XPID creates a new transaction interaction between the Patient Identity Cross-Reference Manager (PIX) and a Document Registry that may require the Document Registry to modify XAD-PIDs in document metadata.
- **Cross-Enterprise Document Workflow (XDW)**—XDW is a new profile that enables participants to track the steps in a patient-centric workflow. Unlike heavier weight workflow engines, XDW is designed to coordinate (but not automate) a set of human-related tasks. This is accomplished through a “workflow document” that is stored in a Document Repository. The workflow document is updated (replaced) as tasks are accomplished and does not contain clinical content, but references documents that do contain related clinical information. XDW is a platform for a wide range of workflows and it is expected that other domains will provide “content specializations” for specific workflows.
- **Support for Metadata-Limited Document Sources**— Formerly known as “Push Metadata”, this supplement loosens the requirements of metadata attributes when using XDR and XDM. For XDR a new “Metadata-Limited Document Source” is defined.
- **Cross Community Fetch (XCF)**—XCF is a new profile that for the simple combined query and retrieval of documents across communities. As opposed to XCA, XCF has a more limited scope, but is more easily implemented in scenarios where the gateway must perform a transformation between different internal and external representations of the document (e.g., coding systems, language, etc.) Because it combines query and retrieval into one transaction it enables such gateways to be implemented in a stateless way.
- **Document Encryption (DEN)**—DEN is a content and transport agnostic profile for encrypting documents and includes a new XDM Media Encryption option for encrypting all XDM media content. DEN supports multiple methods of identity and key management and is agnostic with regard to key management infrastructure. DEN supports symmetric key cryptography, public key cryptography, digital certificates, passwords, and single or multiple recipients.



# New Profile Status

- The ITI face to face meeting concluded on Friday, 22 July 2011
- As of Friday, two profiles and one option are ready for trial implementation:
  - Document Encryption (DEN)
  - Metadata-Limited Document Source Option
  - Cross Community Fetch (XCF)



# New Profile Status(cont.)

- The Cross Enterprise Workflow (XDW) profile underwent substantial modifications in response to comments. The consensus of the meeting was:
  - XDW will be issued for a second round of public comment. (week of 25 July)
  - XDW will be issued for trial implementation in late September, after more comment reconciliation.
  - XDW will not be part of North American Connectathon, but will be part of European Connectathon (May 21-25, 2012).
  - A pilot demonstration effort is being organized for North American Connectathon. Interested companies should contact Rob Horn ([robert.horn@agfa.com](mailto:robert.horn@agfa.com)) or Charles Parisot ([charles.parisot@ge.com](mailto:charles.parisot@ge.com)) if they want to help with the pilot effort.

# New Profile Status(cont.)

- XAD-PID Change Management (XPID)
  - One significant documentation issue remains
  - Travel and other conflicts have interfered with its resolution
  - We hope it will be resolved in time for publication on schedule for North American Connectathon.

# How to Participate?

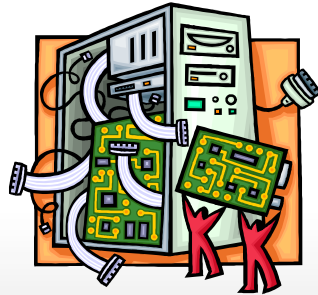
*IHE International Membership is Free.*

- Apply for IHE International Organizational Membership
  - Visit: [www.ihe.net/apply](http://www.ihe.net/apply)
  - Approved monthly by IHE International Board
  - [Review IHE's 400+ Organizational Members](#)
- Participate in IHE Domains & Committees
  - *IHE Organizational Members only*
  - *12 Clinical and Operational Domains*
  - Each Domain has one planning and one technical committee
- Non-members participate in comment periods and implement IHE Technical Frameworks

# IT Infrastructure Responsibilities

## Planning Committee

- Sets Strategic Direction
- Manages Marketing and Education
- Selects Profiles



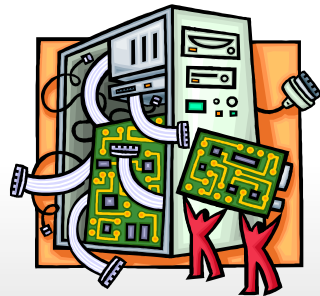
## Contact Information

- HIMSS Secretariat ([ihe@himss.org](mailto:ihe@himss.org))
- Karen Witting ([witting@us.ibm.com](mailto:witting@us.ibm.com) )
- Mike Nusbaum ([michael@mhnusbaum.com](mailto:michael@mhnusbaum.com))
- Links
  - <http://groups.google.com/group/itiplan>
  - [http://www.ihe.net/IT\\_infra/committees/index.cfm](http://www.ihe.net/IT_infra/committees/index.cfm)
  - [http://wiki.ihe.net/index.php?title=ITI\\_Planning\\_Committee](http://wiki.ihe.net/index.php?title=ITI_Planning_Committee)

# IT Infrastructure Responsibilities

## Technical Committee

- Shares decision making on profile selection with Planning Committee
- Develops Profiles
- Maintains Profiles



## Contact Information

- HIMSS Secretariat ([ihe@himss.org](mailto:ihe@himss.org))
- Rob Horn ([robert.horn@agfa.com](mailto:robert.horn@agfa.com))
- Geoff Pascoe ([geoff.pascoe@philips.com](mailto:geoff.pascoe@philips.com))
- Links
  - <http://groups.google.com/group/ititech>
  - [http://www.ihe.net/IT\\_infra/committees/index.cfm](http://www.ihe.net/IT_infra/committees/index.cfm)
  - [http://wiki.ihe.net/index.php?title=ITI\\_Technical\\_Committee](http://wiki.ihe.net/index.php?title=ITI_Technical_Committee)

# How to Participate?

## *Participate IHE's Profile Cycle*

- Committee work follows the IHE Profile Cycle
  - Annual eighteen (18) month **overlapping** cycle
  - Each IHE domain has its' own independent schedule
  - Opportunities for IHE members and non-members to participate
  - In addition the technical committee continually makes changes to profiles to correct and clarify through a “Change Proposal” process.

# IHE Profiles Drafted & Revised



Published For Public Comment

Trial Implementation Posted



# Test at IHE Connectathons



Publish in IHE's Product Registry

months 14-18

IHE Technical Framework Developed

months 6-13



Demonstrate at a



Profile Selection by Committees

IHE Call for Proposals Opens

months 1-5

*IHE Improves, Safety, Quality and Efficiency in Clinical Settings*

Install Interoperable products in Clinical Settings worldwide



# 2011-2012 Cycle

IHE Profile Cycle Stages	Participation Status	Open Date	Close Date	Learn More
<b><i>Call for Proposal</i></b>	Completed	July 2010	September 2010	
<b><i>Profile Selection</i></b>	Completed	October 2010	November 2010	<a href="http://wiki.ihe.net/index.php?title=ITI_Technical_Committee">http://wiki.ihe.net/index.php?title=ITI Technical Committee</a>
<b><i>IHE Profiles drafted in IHE Committees</i></b>	Completed	Dec 2010	April-May 2011	<a href="http://wiki.ihe.net/index.php?title=ITI_Editors_Guidelines">http://wiki.ihe.net/index.php?title=ITI Editors Guidelines</a>
<b><i>Public Comment 1</i></b>	Completed	May 2011	June 2012	
<b><i>Trial Implementation Published</i></b>	Open	July 2011		See details above in this presentation.
<b><i>IHE N.A. Connectathon Registration</i></b>	Open	August 22, 2011	September 30, 2011	<a href="http://www.iheusa.org/connectathon_participant.aspx">www.iheusa.org/connectathon_participant.aspx</a>
<b><i>IHE N.A. Connectathon Dates</i></b>		January 9-14, 2012		<a href="http://www.iheusa.org/connectathon_participant.aspx">www.iheusa.org/connectathon_participant.aspx</a>
<b><i>IHE Connectathon European Dates</i></b>		May 21-25, 2012		<a href="http://www.ihe-europe.net">www.ihe-europe.net</a>

# 2012-2013 Cycle

IHE Profile Cycle Stages	Participation Status	Open Date	Close Date	Learn More
<b><i>Call for Proposal</i></b>	Open	20 July 2011	5 Sept 2011	<a href="ftp://ftp.ihe.net/Document_templates/Planning%20Documents_2009/IHE%20Profile%20Proposal%20Template-Brief_2009-2010.doc">ftp://ftp.ihe.net/Document_templates/Planning%20Documents_2009/IHE%20Profile%20Proposal%20Template-Brief_2009-2010.doc</a>
<b><i>Profile Selection</i></b>	Closed	11-12 Oct 2011 (tent.)	16-17 Nov 2011 (tent.)	<a href="http://wiki.ihe.net/index.php?title=TI_Technical_Committee">http://wiki.ihe.net/index.php?title=TI_Technical_Committee</a>
<b><i>IHE Profiles drafted in IHE Committees</i></b>	Closed	Dec 2011	April-May 2012	<a href="http://wiki.ihe.net/index.php?title=TI_Editors_Guidelines">http://wiki.ihe.net/index.php?title=TI_Editors_Guidelines</a>
<b><i>Public Comment 1</i></b>	Open	May 2012	June 2012	
<b><i>Trial Implementation Published</i></b>	Open	N/A	July 2012	
<b><i>IHE N.A. Connectathon Registration</i></b>	Open	August 2012	September 2012	
<b><i>IHE N.A. Connectathon Dates</i></b>	Open	January 2013		
<b><i>IHE Connectathon European Dates</i></b>	Open	Spring 2013		



*Thank you for your attention*  
*Questions?*



# Learn More about IHE International

## *Important Links and Information*

- IHE Webinar Series runs June-September 2011
  - Visit [www.ihe.net](http://www.ihe.net) for the full list of webinars
  - Registration is free!
- All webinar recordings and slide decks will be posted online at: [www.ihe.net/Events/webinars2011.cfm](http://www.ihe.net/Events/webinars2011.cfm)
- Sign up for the IHE International News
  - Email [secretary@ihe.net](mailto:secretary@ihe.net)
  - Sign up for the [IHE Webinar Series listserv](#)
- Apply for IHE International's Free Membership
  - Visit: [www.ihe.net/apply](http://www.ihe.net/apply)

# Learn More about IHE Connectathons

- IHE Connectathons: [www.iheusa.org/connectathon.aspx](http://www.iheusa.org/connectathon.aspx)
- IHE N.A. Connectathon is January 9-14, 2011
  - Testing dates extended this year. Read more: [www.iheusa.org/connectathon\\_participant.aspx#testingextended](http://www.iheusa.org/connectathon_participant.aspx#testingextended)
- IHE European Connectathon is May 21-25, 2012 in Bern, Switzerland. Learn more at [www.ihe-europe.net](http://www.ihe-europe.net).
- IHE N.A. Connectathon Registration Opens: August 22- September 30, 2011
  - View the Participate Guidelines online: [www.iheusa.org/connectathon.aspx](http://www.iheusa.org/connectathon.aspx)
- Attend information webinars on the Connectathon during the IHE Webinar Series. View the full agenda online at [www.ihe.net](http://www.ihe.net)