



# *Integrating the Healthcare Enterprise International*

*Free Educational Webinar Series 2011*

*Learn More: [www.ihe.net/events/webinars2011.cfm](http://www.ihe.net/events/webinars2011.cfm)*





# *Patient Care Coordination*

*Keith W. Boone*  
*GE Healthcare*



# Patient Care Coordination Agenda

- Domain & Committee Overview
- Domain Profiles & Technical Frameworks
  - Overview Profiles developed
  - New Profiles developed in 2010-2011 year
- How to Participate?
  - IHE International Membership
  - Planning & Technical Committees
- Q&A Session

# Patient Care Coordination (PCC)

## Overview

The Scope of PCC is integration issues that cross providers, patient problems or time. It deals with general clinical care aspects such as document exchange, order processing, and coordination with other specialty domains. PCC also addresses workflows that are common to multiple specialty areas and the integration needs of specialty areas that do not have a separate domain within IHE.

- Domain Sponsors
  - Health Information Management Systems Society ([HIMSS](#))
  - American College of Physicians ([ACP](#))
- Countries involved in committees
  - USA
  - Canada
  - France

# History and Roadmap

- History
  - IHE PCC was formed in May of 2005
  - The committee's first profile was also IHE's first content profile: XDS-MS. The profile was delivered in September of 2005 for Trial Implementation.
  - Since then, it has created over a dozen content profiles, a workflow profile, and several integration profiles supporting clinical decision support.
  - The IHE PCC Technical Framework is used in national programs in the US, France, the EU and Asia.
- Road Map
  - Nursing
  - Pediatric Care
  - Long Term Care

# Profiles & Technical Frameworks

## *Overview*

- IHE Technical Frameworks
  - [http://www.ihe.net/Technical\\_Framework/index.cfm#pcc](http://www.ihe.net/Technical_Framework/index.cfm#pcc)
- IHE Profiles developed by PCC
  - [http://wiki.ihe.net/index.php?title=Profiles#IHE Patient Care Coordination Profiles](http://wiki.ihe.net/index.php?title=Profiles#IHE_Patient_Care_Coordination_Profiles)
- Learn More
  - 2010 Webinar Series-  
<http://www.ihe.net/Events/webinars2010.cfm>
  - 2009 Webinar Series-  
<http://www.ihe.net/Events/webinars2009.cfm>
  - 2008 Webinar Series-  
<http://www.ihe.net/Events/webinars2008.cfm>

# Profiles & Technical Frameworks

## *Existing Profiles with High Uptake*

- Medical Summaries (XDS-MS)
  - Discharge and Referral Summaries exchanged between providers
  - EHR and HIS solutions
  - Ensures adequate exchange of data for referrals and transitions of care between inpatient and ambulatory settings.
- Exchange of Personal Health Records (XPHR)
  - Exchange Clinical Summary data with patients
  - EHRs, PHRs, Patient Portals
  - Ensures that patients have updated lists of healthcare providers, problems, medications, allergies, immunizations, lab results, procedures and encounters

# Profiles & Technical Frameworks

## *Existing Profiles for Clinical Decision Support*

- Query for Existing Data (QED)
  - Access to clinical data (problems, medications, allergies, results, procedures, encounters)
  - EHR, CDR, HIS, Registries
  - Provides access to clinical data for use in quality measurement, reporting, clinical decision support, and research
- Request for Clinical Guidance (RCG)
  - Access to Clinical Decision Support
  - EHR, other HIT Systems
  - Provides standardized interface to access clinical decision support as a service
- Care Management (CM)
  - Supports communication to specialized care delivery systems for disease management

# Profiles & Technical Frameworks

## *Existing Profiles for Emergency Care*

- Emergency Department Referral (EDR)
  - Enhances XDS-MS to support “Heads-up” call to ED
  - EHR, EDIS, HIS, HIE
  - Provides critical data needed in ED visits
- Emergency Department Encounter Summary (EDES)
  - Documents care in an ED encounter
  - EHR, EDIS, other HIT Systems
  - Provides critical information for patients and providers after an ED visit.

# Profiles & Technical Frameworks

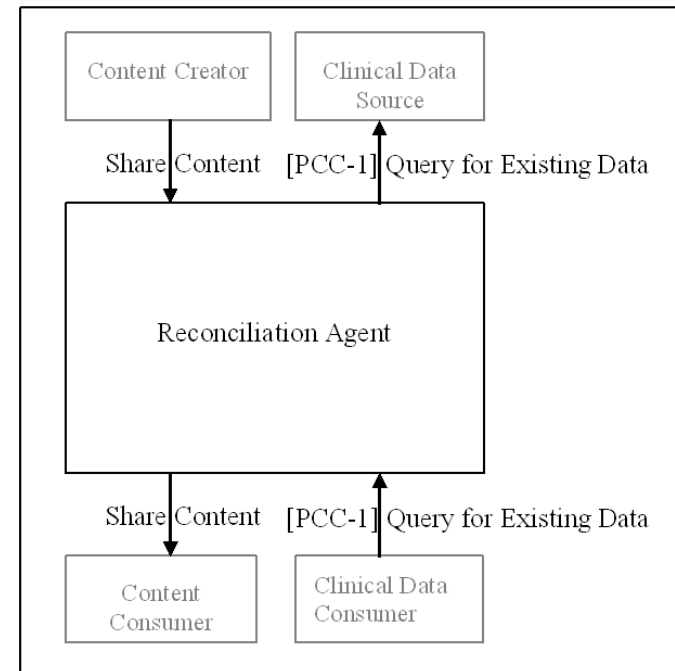
## *Existing Profiles for Nursing and Maternal Care*

- Perinatal Care
  - Antepartum H&P
  - Antepartum Summary
  - Antepartum Laboratory
  - Antepartum Education
  - Labor and Delivery H&P
  - Labor and Delivery Summary
  - Maternal Discharge Summary
  - Newborn Discharge Summary
  - Perinatal Workflow
- Nursing
  - eNursing Summary
  - Patient Plan of Care
- Immunizations
  - Immunization Content

# Profiles & Technical Frameworks

## *New Profiles in Development*

- Reconciliation (RECON)
  - Supports reconciliation of problems, medications and allergies through EHR systems
  - Records information about when reconciliation was done, and against what data sets.
  - Public Comment Completed (July 3<sup>rd</sup>), Trial Implementation under Development

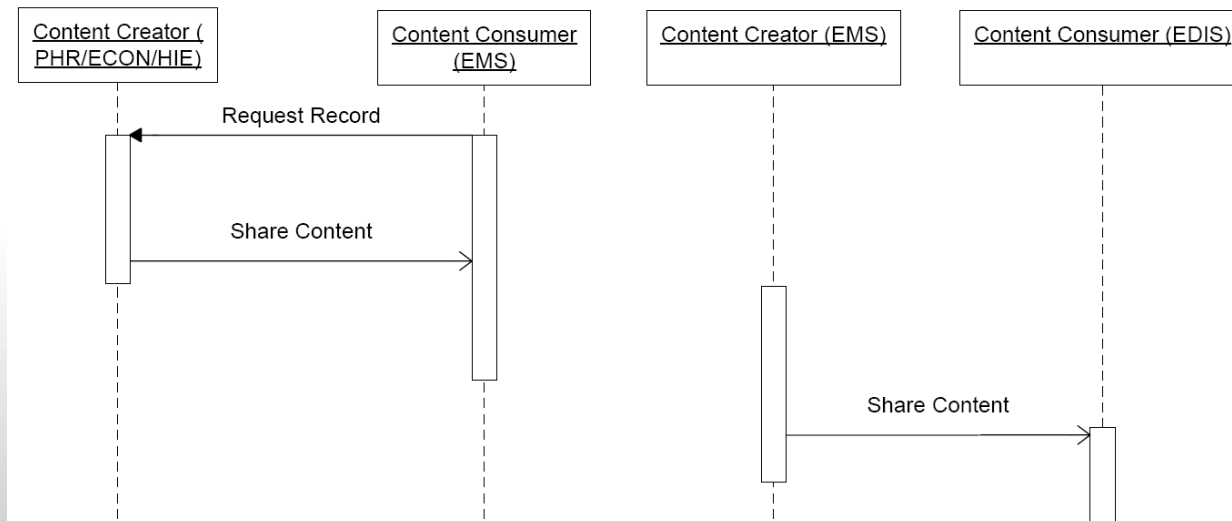


Actors	Transactions	Optionality	Section in Vol. 2
Reconciliation Agent	Share Content	R	PCC-0
	Query Existing Data [PCC-1]	O	PCC-1

# Profiles & Technical Frameworks

## *New Profiles in Development*

- Transport Summaries
  - EMS Transport (ETS)
  - Inter-facility Transport (ITS)
  - Supports documentation of transport information
  - Public Comment Completed (July 3<sup>rd</sup>), Trial Implementation under Development



# How to Participate in PCC

*IHE International Membership is Free.*

- Apply for IHE International Organizational Membership
  - Visit: [www.ihe.net/apply](http://www.ihe.net/apply)
  - Approved monthly by IHE International Board
  - [Review IHE's 400+ Organizational Members](#)
- Participate in IHE Domains & Committees
  - *IHE Organizational Members only*
  - *12 Clinical and Operational Domains*
  - Each Domain has one planning and one technical committee
- Non-members participate in comment periods and implement IHE Technical Frameworks

# Planning Committee Responsibilities

## Planning Committee

- Recruitment
- Education
- Review IHE Profiles Proposals
- Identifies committee priorities and problems
- Planning for 2012-2013
- Committee Roadmap

## Contact Information

- [ihe@himss.org](mailto:ihe@himss.org)
- [Keith W. Boone](#)
- Michael J. McCoy, MD
- [PCCPlan@googlegroups.com](mailto:PCCPlan@googlegroups.com)
- <http://bit.ly/IHEPCCPlan>



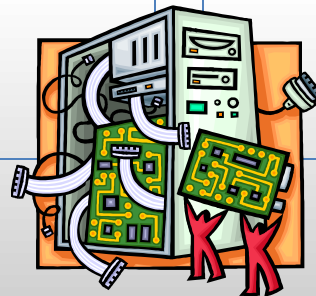
# Technical Committee Responsibilities

## Technical Committee (TC)

- Recruitment
- Development of IHE Profiles
- Maintenance of IHE Technical Frameworks
- Projects:
  - Reconciliation (RECON)
  - Transport Summaries (ETS and ITS)

## Contact Information

- [ihe@himss.org](mailto:ihe@himss.org)
- Laura Bright
- Laura Heerman-Langford
- [pcctech@googlegroups.com](mailto:pcctech@googlegroups.com)
- <http://bit.ly/IHEPCCTech>



# How to Participate in PCC

*IHE International Membership is Free.*

- Apply for IHE International Organizational Membership
  - Visit: [www.ihe.net/apply](http://www.ihe.net/apply)
  - Approved monthly by IHE International Board
  - [Review IHE's 400+ Organizational Members](#)
- Participate in IHE Domains & Committees
  - *IHE Organizational Members only*
  - *12 Clinical and Operational Domains*
  - Each Domain has one planning and one technical committee
- Non-members participate in comment periods and implement IHE Technical Frameworks

# PCC Planning Responsibilities

## Planning Committee

- Recruitment
- Education
- Review IHE Profiles Proposals
- Identifies committee priorities and problems
- Planning for 2012-2013
- Committee Roadmap

## Contact Information

- [ihe@himss.org](mailto:ihe@himss.org)
- [Keith W. Boone](#)
- Michael J. McCoy, MD
- [PCCPlan@googlegroups.com](mailto:PCCPlan@googlegroups.com)
- <http://bit.ly/IHEPCCPlan>



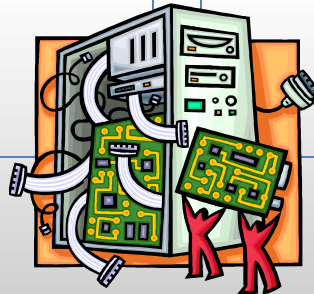
# PCC Technical Responsibilities

## Technical Committee

- Recruitment
- Development of IHE Profiles
- Maintenance of IHE Technical Frameworks
- Projects:
  - Reconciliation (RECON)
  - Transport Summaries (ETS and ITS)

## Contact Information

- [ihe@himss.org](mailto:ihe@himss.org)
- Laura Bright
- Laura Heerman-Langford
- [pcctech@googlegroups.com](mailto:pcctech@googlegroups.com)
- <http://bit.ly/IHEPCCTech>



# How to Participate in PCC

## *Participate IHE's Profile Cycle*

- Committee work follows the IHE Profile Cycle
  - Annual eighteen (18) month cycle
  - Each IHE domain has its' own independent schedule
  - Opportunities for IHE members and non-members to participate in cycle
- Detailed overview of IHE Cycle next

# IHE Profiles Drafted & Revised



Published For Public Comment

Trial Implementation Posted



# Test at IHE Connectathons



Publish in IHE's Product Registry

months 14-18

IHE Technical Framework Developed

months 6-13



Demonstrate at a



Profile Selection by Committees

IHE Call for Proposals Opens

months 1-5

***IHE Improves, Safety, Quality and Efficiency in Clinical Settings***

Install Interoperable products in Clinical Settings worldwide



[www.ihe.net](http://www.ihe.net)



<b>IHE Profile Cycle Stages</b>	<b>Participation Status</b>	<b>Open Date</b>	<b>Close Date</b>	<b>Learn More</b>
<b><i>Call for Proposal</i></b>	Open	Week of July 18, 2011	September 5, 2011	<a href="ftp://ftp.ihe.net/Document_templates/Supplement_template/">ftp://ftp.ihe.net/Document_templates/Supplement_template/</a>
<b><i>Profile Selection</i></b>	Closed	October 11-13	November	<a href="http://bit.ly/IHEPCCPlan">http://bit.ly/IHEPCCPlan</a>
<b><i>IHE Profiles drafted in IHE Committees</i></b>	Closed	January 2012	May 2012	<a href="http://bit.ly/IHEPCCTech">http://bit.ly/IHEPCCTech</a>
<b><i>Public Comment</i></b>	Open	June 2012	July 2012	<a href="#">IHE.net- Documents now in PC IHE's Wiki- PC Process explained</a>
<b><i>Trial Implementation Published</i></b>	Open	N/A	July 2012	<a href="http://bit.ly/IHEPCCTF">http://bit.ly/IHEPCCTF</a>
<b><i>IHE Connectathon Registration</i></b>	Open	August 22, 2011	September 30, 2011	<a href="#">IHE N.A. Connectathon Registration</a>
<b><i>IHE Connectathon Dates</i></b>	Open	January 9, 2012	January 14, 2012	<a href="#">IHE N.A. Connectathon</a>



*Thank you for your attention*  
*Questions?*



# Learn More about IHE International

## *Important Links and Information*

- IHE Webinar Series runs June-September 2011
  - Visit [www.ihe.net](http://www.ihe.net) for the full list of webinars
  - Registration is free!
- All webinar recordings and slide decks will be posted online at: [www.ihe.net/Events/webinars2011.cfm](http://www.ihe.net/Events/webinars2011.cfm)
- Sign up for the IHE International News
  - Email [secretary@ihe.net](mailto:secretary@ihe.net)
  - Sign up for the [IHE Webinar Series listserv](#)
- Apply for IHE International's Free Membership
  - Visit: [www.ihe.net/apply](http://www.ihe.net/apply)

# Learn More about IHE Connectathons

- IHE Connectathons: [www.iheusa.org/connectathon.aspx](http://www.iheusa.org/connectathon.aspx)
- IHE N.A. Connectathon is January 9-14, 2011
  - Testing dates extended this year. Read more: [www.iheusa.org/connectathon\\_participant.aspx#testingextended](http://www.iheusa.org/connectathon_participant.aspx#testingextended)
- IHE N.A. Connectathon Registration Opens: August 22-September 30, 2011
  - View the Participate Guidelines online: [www.iheusa.org/connectathon.aspx](http://www.iheusa.org/connectathon.aspx)
- Attend information webinars on the Connectathon during the IHE Webinar Series. View the full agenda online at [www.ihe.net](http://www.ihe.net)